



## Early Years Quality Improvement Team's Weekly Bulletin

Welcome to this week's bulletin, recent bulletins can be found [here](#)

### Keep in touch



[EarlyYearsCentre@lancashire.gov.uk](mailto:EarlyYearsCentre@lancashire.gov.uk)

01772 539058



[www.lancashire.gov.uk/early-years-support-and-training/](http://www.lancashire.gov.uk/early-years-support-and-training/)



**Facebook:** [www.facebook.com/LancsEarlyYears/](http://www.facebook.com/LancsEarlyYears/)  
[www.facebook.com/groups/lancsearlyyears/](http://www.facebook.com/groups/lancsearlyyears/)



**Advertise your job vacancies for free**

[www.lancashire.gov.uk/practitioners/supporting-children-and-families/childcare-and-early-years-settings/](http://www.lancashire.gov.uk/practitioners/supporting-children-and-families/childcare-and-early-years-settings/) complete this [Form](#)



### New Manager/Deputy Academy

**Are you new to the role of the manager or deputy manager at a PVI nursery?**

Perhaps you have only been a manager for the last 6 months or so or have recently become a deputy manager. Let us know and we can offer you some additional support whilst you fully find your feet (no charge).

One of the Early Years Project Officer's will meet with you virtually to discuss your current challenges and offer advice and guidance and you will also be invited to termly, virtual group meetings to network with other new managers for peer support.

What next: just complete this [Microsoft Teams form](#)

### New Practitioners Academy

**Are you training or been in early years for less than a year?**

Join our new practitioners' academy by completing this [FORM](#) and we will be in touch before each session to share the links with you.

These are free to attend and will help you in your new or future role (there is no need to book, just complete the form).

<b>19<sup>th</sup> May</b>	4 to 5pm
<b>7<sup>th</sup> July</b>	9.45 to 10.45am

We will chat to you about all sorts of elements of practice as well as giving you the opportunity to ask questions.

We are really looking forward to meeting you and welcoming you to the best profession in the world!

## Your sector representatives

Please contact your PVI representatives on the Early Years Consultative Group, **Rafael Schiel** [rafael@giantleapchildcare.co.uk](mailto:rafael@giantleapchildcare.co.uk) or **Sharon Fenton** [sharon@risingstarslancaster.co.uk](mailto:sharon@risingstarslancaster.co.uk) if you have any comments or questions that you would like them to take forward to the County Council on your behalf.

## Membership – annual update



We are excited to share this year's updated membership package of additional support. The attached letter gives you all the details (also sent to your email address).

**Member's** - take a look and make sure that you are aware of all the new benefits.

**Not yet a member** - take a look and see how your setting can benefit from joining this year.

If you purchased additional support this year, it will be assumed that you wish to continue with this unless we hear from you in writing by the **30th of April** to say otherwise. The cost of your membership package will remain the same for the coming year April 2026 – March 2027. If you would like to make any changes to your membership, or to sign up if you are not yet a member, you can email the team at the centre at [EarlyYearsCentre@lancashire.gov.uk](mailto:EarlyYearsCentre@lancashire.gov.uk).

## Something to do this week – review how you support children who have allergies

**Did you know that between 5 and 8 percent of children in the UK have a food allergy?**

You must tell parents if any food you provide (either 'homemade' or purchased) contains any of the 14 major allergens. The 14 allergens are: **celery**, **cereals containing gluten** (such as barley and oats), **crustaceans** (such as prawns, crabs and lobsters), **eggs**, **fish**, **lupin**, **milk**, **molluscs** (such as mussels and oysters), **mustard**, **peanuts**, **sesame**, **soybeans**, **sulphur dioxide and sulphites** (at a concentration of more than ten parts per million) and **tree nuts** (such as almonds, hazelnuts, walnuts, brazil nuts, cashews, pecans, pistachios and macadamia nuts).



as

The Food Standards Agency website has all the information that you need to help you, including free training and templates

[Allergen guidance for food businesses | Food Standards Agency](#)

Children may have allergies to other foods and it is essential that you have systems in place to ensure parents let you know of any allergies (including non-food allergies), this will usually be included on the child's registration form. Consider how you remind parents to update this information if a child develops an allergy or other health need.

You will need to ensure that this information is easily accessible so that all adults are fully aware of the child's allergy when preparing or serving food.

Those preparing or serving food will need to be vigilant to ensure there is no cross contamination including when cleaning food preparation areas and when storing food. The [check list](#) on the website is very useful to help you consider if you have the appropriate systems in place.

[The Food Allergy Awareness Training for Childcare Practitioners](#) is online recorded training (4.5hours) and can be purchased for **£17**. It is ideal for all childcare practitioners, including childminders. The training includes:

- Latest allergic Ingredient law and updates and EYFS context.
- Common mistakes when working with allergenic ingredients.
- Defining food allergies, food intolerances, and Coeliac Disease.
- 14 food allergies named in legislation and the dangers of hidden ingredients.
- How to design allergy-aware recipes and ingredient factsheets for staff and parents.
- How to make your premises allergy ready incl. suppliers, delivery and cooking.
- Identifying allergenic attacks and emergency First Aid and EpiPen use on young children.

To purchase, please use the form below and you will be sent a link to the training to access for 2 weeks. [Course Booking Form - Early Years Professional Development \(office.com\)](#)

Adults must also be aware of what might happen if a child has an allergic reaction and the action they must take. **Paediatric First Aid Training** contains training on how to help a child suffering from anaphylactic shock or other allergic reaction. If you have a child attending who has been prescribed an adrenaline auto injector pen (e.g. epi pen) then staff should undertake specialist training for this individual child.

## Best Start in Life

### Working with 2 year olds – practice cards



Collect and share the latest card for practitioners working with 2 year olds. The topic this week is 'Dealing with Biting and the card is attached for you to use in your setting and share with parents. Watch this [short video](#) to find out more about our **Best Start in Life Campaign** and how your setting can get involved.

### Lancashire Early Years podcast



#### Relationships Are Everything: Lisa shares her experience of leadership

In this conversation, **Lisa from Evergreen Early Years** shares her journey from social work and youth justice into early years leadership, opening up about the values, experiences, and heart that shape 'The Evergreen Way'. She talks about building strong, trusting relationships, keeping practice simple and child-led, and creating nurturing environments where children and educators can thrive. It's an inspiring look at how authenticity, community, and world-class basics come together to give children the very best start in life.

[https://open.spotify.com/episode/0z7Ykgw4qA2nQhc5vvep5p?si=pGHZbjWzRD-BSqq\\_oWWo7w](https://open.spotify.com/episode/0z7Ykgw4qA2nQhc5vvep5p?si=pGHZbjWzRD-BSqq_oWWo7w)

### Updated Childcare Sufficiency

#### April 2026



Following the extension of the **Early Education Funding** entitlements in September 2025, we are looking to update our data about **funded and non-funded childcare places**. This is to look at where the market has adapted since our full CSA assessment at the start of Autumn term 2025. To do this we have sent out a very short survey. This is **not** the full CSA survey and should only take a couple of minutes to complete.

**We would be extremely grateful for your submission as soon as possible.** You will receive an email from the CSA team via [invitation@online1.snapsurveys.com](mailto:invitation@online1.snapsurveys.com). **Please check your spam or junk folder.** This will contain further instructions about how to access the survey. We encourage you to complete this as soon as possible.

As an Early Education Funding provider, we rely heavily on your input to assist us in meeting our statutory duty in assessing childcare places currently available within Lancashire. Thank you,

**Childcare Sufficiency Team**

## New DfE Guidance - Getting children ready for reception: supporting effective transition

How schools and early years settings, including childminders, can work with parents and carers to support children's transition into reception.

[Getting children ready for reception: supporting effective transition - GOV.UK](#)

## Baby and toddler screen time guidance

Government answers parents' calls for support on screen time with new evidence-backed guidance.

[New screen time guidance for parents of under-5s](#)

The government has committed to publishing guidance on early years screen time. We are seeking evidence to inform the guidance.

[Early years screen time and usage](#)



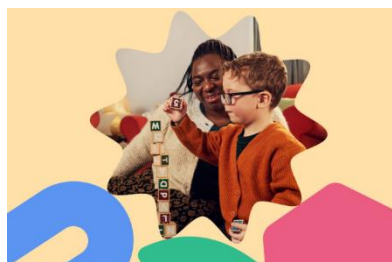
The findings and recommendations of the Early Years Screen Time Advisory Group on the effects of all types of screen use in the early years of childhood.

[Screen use by children aged under 5](#)

## Early Years Stronger Practice Hub - newsletter

Please find the April Newsletter from the Liverpool City Region and Beyond Early Years Stronger Practice Hub. Containing news, updates, network meetings and training.

## Childminders – share your story!



The [Do Something Big campaign](#) are looking to put together an article for National Childminding Week in May. We'd love to include current childminders in the article so they can share their experiences and inspire others who might be thinking about a career as a childminder.

Once published, the article will be featured across National Careers Service and DfE channels, so it's a great opportunity for childminders to reach a wide audience. If are interested in sharing your story, we'd love to hear from you. You can express your interest by completing the attached short case study form and returning it to [Luke.PRESCOTT@education.gov.uk](mailto:Luke.PRESCOTT@education.gov.uk)

We will share the full article with you before it goes live, so you will have the opportunity to review it and approve your quotes.

## Early years SEND online event

Join the Minister for Early Education, Olivia Bailey for an Early Years SEND reform online event.

Join Olivia Bailey, the Best Start in Life Champion, Sue Robb, alongside Sarah Ronan, Executive Director of the Early Education and Childcare Coalition, for a live online event about the government's plans for the sector and what the recently announced SEND reforms mean for you.

You can find further details and sign up via [Eventbrite](#).

## Birth to 5 Matters update – share your thoughts



Five years after its publication, *Birth to 5 Matters – Guidance by the sector, for the sector* is to be reviewed and relaunched to ensure it is up to date and best meets the needs of the sector.

The Coalition shared that *'We've been hard at work on the draft of the renewed Bto5M guidance -- adding new sections, expanding and clarifying. Are we on the right track? Please have a look at the draft and let us know what you think by answering a few survey questions.'*

[Birth to 5 Matters Review – 1st Draft Sector Consultation Survey](#)

Survey open until **20th April**

## Foundation Years - Newsflash

Olivia Bailey, Minister for Early Education writes to early years sector on **safer sleep requirements**

Olivia Bailey, Minister for Early Education and Minister for Equalities at the Department for Education has written a letter to early years providers. The letter sets out the intention to amend the Early Years Foundation Stage (EYFS) statutory framework, to clarify safeguarding requirements for children's sleeping arrangements.

The amendments will make safer sleep requirements explicit within the EYFS framework. The new framework is expected to come into force from September 2026, subject to parliamentary process, although providers are already expected to be compliant with the requirements.

Minister Bailey has emphasised that providers must ensure children are placed down to sleep safely, in line with NHS safer sleep guidance. This includes placing babies on their backs, in a clear, separate sleep space, with appropriate bedding and regular supervision. The updated wording has been developed with input from The Lullaby Trust, medical experts and Ofsted.

Further amendments will clarify requirements for childcare on domestic premises and include a link to updated guidance on screen time and online safety. The full letter from the Minister can be read here:

[www.foundationyears.org.uk/files/2026/03/Letter-from-the-Minister-for-Early-Education-to-Sector.pdf](http://www.foundationyears.org.uk/files/2026/03/Letter-from-the-Minister-for-Early-Education-to-Sector.pdf)

## Office for product safety – product recall

On 03/02/2026 a [newsflash](#) went out related to The Office for Product Safety and Standards (OPSS) issuing a Product Recall to warn about a safety risk associated with the Hobbycraft Giant Box of Craft.

As of 26 March, the number of recalled products is now 30 from more than 10 separate businesses. OPSS is working with local Trading Standards and the UK toy industry to make sure businesses act immediately. Those that have been identified have been removed from sale and recalled.

All settings should review the products recalled here - [asbestos - GOV.UK](#) and follow the outlined precautionary steps on the relevant product page to dispose of these products safely. For more information you can access the business' contact details within the alert or contact the Citizens Advice Consumer helpline, [www.citizensadvice.org.uk/consumer/](http://www.citizensadvice.org.uk/consumer/), or your local Trading Standards department.

## Lancashire Health Protection Team bulletin

Please see the link below for the latest Heads up Health Protection bulletin.

[Heads Up from Health Protection - April 26 Bulletin](#)

Our team is committed to raising awareness and providing valuable information to help you stay healthy and safe. We work to ensure that you have access to the resources and knowledge to help you make informed choices in order to protect yourself and your loved ones.

## April Lancashire Safeguarding Partnership newsletter

In this month's [newsletter](#), you'll find:

- Working Together 2026
- Various training opportunities
- Safeguarding Voices
- CDOP update
- Lancashire Safeguarding Partnership website

## NSPCC - new resources

### **Domestic abuse in pregnancy**

NSPCC Learning has published a series of expert insight videos on domestic abuse in pregnancy. The four videos include practitioner insights on the risk of domestic abuse in pregnancy, the impact on unborn children and families, and how professionals can spot the signs and respond effectively.

Watch the videos: [Domestic abuse in pregnancy: expert insight videos](#)

### **PANTS resources**

NSPCC Learning has published a new series of Talk PANTS videos. Talk PANTS is an NSPCC campaign to keep children safe from sexual abuse and includes a range of resources to help teachers, schools and early years settings deliver age-appropriate sessions with children. The new videos are funded by The Executive Office in Northern Ireland and include an introduction to what Talk PANTS is. They also feature videos for use with children aged between 3- to five-years-old, 5- to 7-years-old, and 7- to 11-years-old, as well as children who have special educational needs and disabilities (SEND) and additional support needs (ASN) aged 4- to 11-years-old to help them understand Talk PANTS.

Access the resources: [PANTS resources for schools and teachers](#)

## DfE – thank you message

### **A Warm Thank You to Our Private Wraparound Providers**

As we reflect on the significant progress made since the start of the national Wraparound Programme, I wanted to express my heartfelt thanks for the incredible work you've done to expand and enrich wraparound childcare. Your dedication has helped create a remarkable number of new places for families, contributing to the over 105,000 wraparound places delivered nationally and with places still growing.

But the story isn't just in the numbers. It's in the inclusive, high-quality provision you are building. You've ensured that more children can access enriching activities beyond the school day.

Your work alongside schools and the local authority has made this expansion possible. Your marketing efforts have helped families discover new childcare options, boosting take up and increasing access to financial support through Tax Free Childcare, making wraparound more affordable for families who need it. Thanks to you, parents can head to work knowing their children are safe, supported, and having fun every single day.

You've helped make wraparound feel less like a service and more like a community - warm, responsive, and built around what families really need.

As we transition out of the Childcare Works contract on 1<sup>st</sup> April and move into the next phase, with additional investment going into local authority capacity, we want to continue building on this success together, supporting you to keep delivering high quality, accessible, inclusive childcare for every family. We are working hard to ensure you continue to have access to the best practice resources and from the 1st of April, most of these resources will be available via your LA contact who will have access to the Early Years and Wraparound Knowledge Hub.

For future **Wraparound** queries relating to the **National Wraparound Programme grant** contact [finance.wraparound@education.gov.uk](mailto:finance.wraparound@education.gov.uk).

Most of all, thank you for caring so deeply. Everything you've delivered so far is changing lives for the better, and it truly shows.

Kind regards

Hannah Streatfeild and Emily Whitehead  
Deputy Directors, Schools Groups

## DfE and Ofsted updates

Ofsted to inspect early years providers more frequently:

[www.gov.uk/government/news/ofsted-to-inspect-early-years-providers-more-frequently](https://www.gov.uk/government/news/ofsted-to-inspect-early-years-providers-more-frequently)

[Big Listen action monitoring reports](#): Ofsted's monitoring reports on commitments made in the Big Listen and its response to Dame Christine Gilbert's independent learning review. Added 'Big Listen action monitoring report: February 2026' (8<sup>th</sup> April 2026).

[Ofsted: areas of research interest](#) (10<sup>th</sup> April 2026)

This document outlines the research questions and themes that matter most to improving outcomes for children, young people and learners.