



Early Years Quality Improvement Team's Weekly Bulletin 8th January 2026

Welcome to this week's bulletin, recent bulletins can be found [here](#)

Keep in touch



EarlyYearsCentre@lancashire.gov.uk

01772 539058



www.lancashire.gov.uk/early-years-support-and-training/



Facebook: www.facebook.com/LancsEarlyYears/

www.facebook.com/groups/lancsearlyyears/



Advertise your job vacancies for free www.lancashire.gov.uk/practitioners/supporting-children-and-families/childcare-and-early-years-settings/ complete this [Form](#)



New Managers / Deputy Manager Academy

Are you new to the role of the manager or deputy manager at a PVI nursery?

Perhaps you have only been a manager for the last 6 months or so or have recently become a deputy manager. Let us know and we can offer you some additional support whilst you fully find your feet (no charge).

One of the Early Years Project Officer's will meet with you virtually to discuss your current challenges and offer advice and guidance and you will also be invited to termly, virtual group meetings to network with other new managers for peer support.

What next: just complete this [Microsoft Teams form](#)

New Practitioners Academy

Are you training or been in early years for less than a year?

Join our new practitioners' academy by completing this [FORM](#) and we will be in touch before each session to share the links with you.

These are free to attend and will help you in your new or future role (there is no need to book, just complete the form).

20th January	4 to 5pm
10th March	9.45 to 10.45am
19th May	4 to 5pm
7th July	9.45 to 10.45am

We will chat to you about all sorts of elements of practice as well as giving you the opportunity to ask questions.

We are really looking forward to meeting you and welcoming you to the best profession in the world!

Something to do this week!

Continuous professional development



In early years education, learning never stops. Whether you are new to childcare or have years of experience, there's always new research, fresh guidance and changing legislation that helps to shape best practice. **Continuous Professional Development (CPD)** isn't just a requirement, it is an opportunity to learn, innovate and inspire.

CPD helps you:

- **Broaden your skills** and build confidence in your practice, leading to greater job satisfaction.
- **Achieve higher qualifications**, opening doors to promotion and career progression.
- **Raise the quality** of care and education for children and families.
- **Inspire others**, becoming a role model for professional growth.
- **Stay current** with legislation and the latest approaches.

Flexible Learning That Fits Your Life

CPD comes in many forms, so you can choose what works best for you. From face-to-face sessions to online learning at your own pace, the choice is yours.

You can learn:

- Through **reflection on your practice**
- **Peer-to-peer discussions**
- Reading **articles, magazines, or books**

- Exploring **websites and resources**
- Attending **training sessions**
- Joining **webinars and online courses**
- Completing **e-learning modules**

Why does CPD Matter

The **Early Years Inspection Toolkit** highlights that inspectors look for evidence of effective professional learning that builds expertise and demonstrates an impact on the quality of teaching and outcomes for children. Planning for improvement and allocating time and resources for sustained professional growth is important. Identify mandatory training, note areas that benefit specific children or your whole cohort, and think of topics that interest you personally.

Keep a **CPD log** of what training you have done and how it's influenced your practice moving forward.

Many settings share the Early Years Team training brochure with staff, asking them to mark courses that would benefit the setting, children, or themselves—a simple but powerful way to plan for the year ahead.

CPD isn't just about ticking boxes, it's about staying inspired, improving outcomes, and shaping the future of early years education to give children the best start in life.

Exciting News!

Lancashire Early Years launch on Instagram

We are launching our official Instagram soon.

The platform will focus on going **back to basics**, starting at the foundations of the EYFS with a huge emphasis on child development to strengthen practice in our early years settings. You will be joining in on content from the Team and the Early Years Professional Development Centre.

Give us a follow here: <https://www.instagram.com/lancsearlyyears/>

Or search for @lancsearlyyears



Congratulations!



We would like to **congratulate** our Early Years Consultant, **Rachel Hughes** on receiving **her PhD in Early Years Education**.

We are incredibly proud of Rachel's achievement and this accomplishment will contribute to **shaping best practice** and **improving outcomes** for children across Lancashire.

Building blocks training

Building blocks is a series of training videos that, once purchased, you keep for your setting. They can be particularly useful when inducting new members into your team.

Packages include:

Working with 3 – 4 years

This package takes a holistic perspective and explores what children of this age can do, what you might notice in your setting and what they need. The videos focus on what it's like to be a preschool child from the perspective of: **'the brain', 'the body' and 'the world'**. This series supports not only those working with this age group, but also those above and below, exploring skill progression, looking at what children can already do, and what they need to maximise their learning.

To order this package at a cost of £55, please follow the link

[Course Booking Form - Early Years Professional Development](#)

Mathematics

Included in the set are over 8 hours of professional development content including:

- Introduction: Mathematics through Continuous Provision for 3 to 5 year olds
- Developing a Mathematical Learning Environment for 3 to 5 year olds
- Promoting Mathematical Mark making for 3 to 5 year olds
-And much more.....

To order this package at a cost of £200, please follow the link [here](#)

To top up your package to include the Lancashire Quality Award in Early Mathematics for a total cost of £300, please follow the link [here](#)

Other subjects in the Building Blocks series include:

- Communication and language
- 0-2 year olds
- 2 -3 year olds

For more information and to purchase these brilliant 'building blocks' videos see our website:

[Nursery settings and schools training courses - Lancashire County Council](#)

[Building Blocks - Communication and Language \(Childminders\) *NEW FOR 2025* \(CM\) - Lancashire County Council](#)

Liverpool City Region and Beyond Early Years Stronger Practice Hub

Professional Development Offers

All CPD is funded by the Department for Education unless specified



Please find below details of our online, face-to-face, networks and pre-recorded training sessions for early years educators working with children 0-5 years

Please see the attached flyer for details of upcoming, funded, early years sessions and networks.

Early Years Quality Improvement Team Training brochures



Attached are the **training brochures** for your sector designed to support your **professional development**. This is a perfect time to book your **team's training** for the year ahead – explore our wide range of courses from **foundational skills** to **advanced leadership** and ensure that your setting stays ahead of changes and best practice.

To view the training on our website and book:

[Training and information for all early years settings - Lancashire County Council](#)

DfE counter extremism new training package



The departments Counter Extremism team have launched a [new training package](#), available to book, for Early Years practitioners.

The objectives of this training are:

- to understand your role as an Early Years practitioner in relation to Prevent
- to understand the importance of referring to Prevent and the legal duty
- to recognise the tools available to help you
- to understand what Ofsted might expect to see in relation to Prevent

to recognise how to build resilience to radicalisation by promoting Fundamental British Values

Ofsted Early Years Inspection Toolkit



You can now order a printed, colour, copy of this guidance from the [publications area](#) of our website or by using the [order form](#).

The guidance sets out how early years settings (childminders, PVI nurseries and out of school clubs) are inspected.

Cost: £6 (plus £4 p&p) or you can [download](#) for free.

News Flash! Update to Working Well with Children and Families in Lancashire guidance

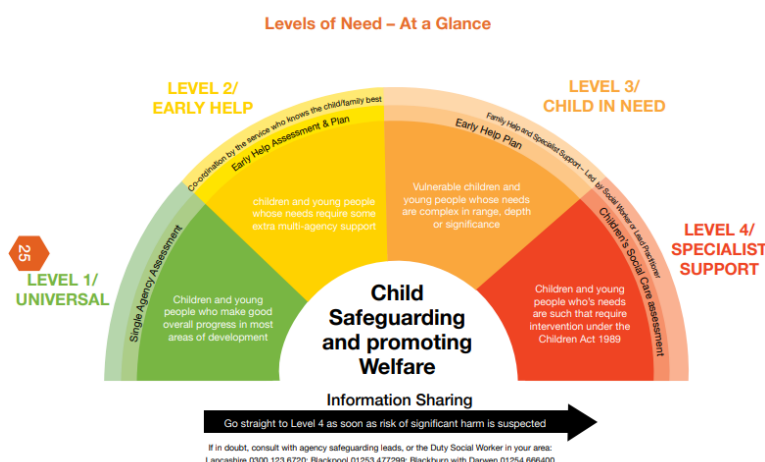
This **guidance** is best used alongside the **Continuum of Need** as it has a list of indicators of what you may see at each of the four levels of need. The **indicators are really helpful** to refer to when **assessing the vulnerability** of individual children and planning next steps.

There has been a change at **Level 3 Early Help** where a Family Support Worker from Children and Family Wellbeing Service is allocated and is the **Lead Professional**. Level 3 is for families that require more **intensive support** and the change is that some of these children will be identified as a Child in Need (this used to be at Level 4 Specialist Support with an allocated Social Worker). Although a Family Support Worker will lead on the day to day support there will be oversight by a **qualified Social Worker**.

The change will not affect Level 2 Early Help support where it may be yourself as the early years practitioner who takes on the role of Lead Professional.

Here is the **link** to the 2025 document. **Please refer to this** and delete previous versions. [working-well-with-children-and-families-pt-1-2-v6.pdf](#)

Please also use the **new Continuum of Need** for reference. The visual can be found at the back of the updated booklet.



Change to request for support from Children's Social Care

From 29th May 2025 **Children's Social Care** introduced a new service for submitting an **online request for support**. The first time you use this service you must register for a children and families service account. Once registered, you must log in to submit further requests for support. This link takes you to the relevant documents with further information on how to create your account.

<https://www.lancashire.gov.uk/practitioners/supporting-children-and-families/safeguarding-children/requesting-support-from-childrens-services/>

Lancashire Safeguarding Partnership Newsletter



Inside this month's newsletter, you'll find:

- Recent partnership updates and announcements
- Learning from reviews and audits
- Training opportunities and resources
- Spotlight features from services and teams
- Useful guidance to support your ongoing safeguarding practice

[December 2025 - Lancashire Safeguarding Partnership Newsletter](#)

NSPCC Child protection and safeguarding news

NSPCC
'Learning'



CASPAR

The NSPCC are keeping practitioners and parents up-to-date with the latest child protection and safeguarding news through their 'Current awareness for policy, practice and research' (CASPAR) newsletter.

Information includes child protection data, strategies for violence against women and girls and report on child sexual exploitation. To read about these news items and more please see - [CASPAR weekly update](#)

and to sign up to get future newsletters direct to your inbox, and to share with parents, please see –

[CASPAR | NSPCC Learning](#)

Members workshop

Just a quick reminder to our members to book onto the upcoming 'members workshop'. See the attached flyer for more details.

Risky play versus risk benefit with Clare Glover

This workshop will consider the benefits of exposing children to risk!

Wednesday 21st January 2026

1.30 to 2.30pm or 6.30pm to 7.30pm

For more information see our website:

[Members Practical Workshops - Lancashire County Council](#)

Childminders Five minute business tips

New Year is a good time to start new habits and look to the year ahead for **organising your childminding business**.

The Childminder 'Five minute business tips' gives you a quick run through of what you can do to ensure that you are organised and legally compliant.



Five minute business tips for
childminders
Public · Playlist

You can watch the latest in the series here:

Marketing and Customer Relations <https://youtu.be/v86aHIUx01c>

And if you would like to watch the whole series you can find the
playlist here:

Five minute business tips for childminders

https://youtube.com/playlist?list=PLcE1_d62WqKls3EDLeAQ1tsF1bVCTYZ9H&si=Ri36-ccz0yINrRfw

(including top tips for completing your tax return)

Looking for further support with the business side of childminding? Our ***Childminder Business Handbook*** is packed with practical advice and essential guidance you can keep coming back to. It is your go-to resource for staying organised and compliant. Purchase your copy today: [Publications for sale - Lancashire County Council](#)

Early Years Spring term activity for the National Year of Reading is now live!



The National Year of Reading is a bold, year-long Department for Education initiative delivered in collaboration with the National Literacy Trust.

The Early Years offer will be a termly cycle of professional development and resources for educators, and memorable events for children.

To get involved, all you need to do is choose your preferred sign-up option:

- Option 1: Go All In (Whole setting approach) – Nominate a representative from your setting to register for our Learning Management System for a guided journey through termly activities – plus, take part in a participatory award with prizes.
- Option 2: Dip In (Individual approach) – Sign up to individual events and download resources as they go live.

Get ready for January:

1. [Decide your level of involvement and sign up: Go All In or Dip In](#)
2. [Download our starter toolkit which includes a calendar and an all staff briefing presentation on the National Year of Reading](#)
3. [Sign up to our All-Phase Introduction Webinar on 15 Jan to kick start 2026](#)

Let's make 2026 the year we put storytelling at the heart of early years learning and give every child the best start in life.

[What's On For Schools | National Year Of Reading 2026 | National Literacy Trust](#)

Playwork



This PechaKucha presentation, delivered by Quality Childcare Development Officer, Kelly Pemberton, offers a whistle-stop introduction to playwork, including:

- The role of the playworker
- Playwork principles
- Play types
- Play cycles
- Play interventions

Want to dive deeper? Explore our full range of training sessions:

✅ Role of the Playworker

www.lancashire.gov.uk/early-years-support-and-training/out-of-school-settings-training/the-role-of-the-play-worker/

✅ Thinking Differently About Play

www.lancashire.gov.uk/early-years-support-and-training/out-of-school-settings-training/thinking-differently-about-play/

Available as recorded webinars or in-house delivery.

Watch here: <https://youtu.be/ghf5dJY3caM>

Selected DfE Updates 5th – 6th January 2026

- [Exemptions from the EYFS for providers and individual children](#)

What early years settings must do to apply for an exemption from the early years foundation stage (EYFS).

- Updated: 5 January 2026