

Lancashire County Council

Childcare Sufficiency Assessment

April 2024 - March 2025

Chorley





Contents

Introduction	2
Overview of Government Childcare Initiatives in Lancashire	3
Lancashire Overview	4
Local Demographics	6
Parent Survey	7
Childcare Provision	10
Movement in the Market.....	12
Childcare Places	13
Early Education Funding	15
Accessibility of Childcare	18
Childcare Fees	20
Quality of Childcare Provision.....	21
Provision for Children with Special Educational Needs and/or Disabilities (SEND)	22
Business and Finance	23
Key Findings and Action Plan	24



Introduction

The Childcare Act 2006 places a statutory duty upon local authorities to secure sufficient childcare, so far as is reasonably practicable, for working parents or parents who are studying or training for employment, for children aged 0-14 or up to 18 for disabled children.

The Childcare Sufficiency Assessment (CSA) is a county wide review of the supply and demand of childcare, take up of funded provision, the availability of places, the quality and cost of provision. The information has been broken down into area reports for ease of reading, this provides the reader with an overview at a localised level.

Methodology

In order to gather up to date, accurate childcare supply data, we carried out an online survey with childcare providers. We also surveyed a sample of parents throughout Lancashire to ascertain demand including childcare needs, opinions and trends. As it is not possible to include data for all parents and providers in Lancashire, the information in this report should be seen as a guide to local provision, rather than being conclusive. It is also important to note that any figures represent a snapshot in time. Some tables will have blank cells as we may not have all provider types in each area, or the data has not been supplied by the providers. Caution should be given where there is only one provider type in that group. Data from the termly census and headcount claims is used to map the take up of funded childcare places and Ofsted data is used to identify the quality of childcare in Lancashire.

Types of Childcare

Childcare includes Childminders, Day Nurseries, Pre-Schools, Nursery Units of Independent Schools, Breakfast Clubs, After School Clubs, Holiday Schemes, Maintained Nursery Classes, Maintained Nursery Schools, and School Governor Led Provision (section 27).

Registered Childcare: Ofsted is the Office for Standards in Education, Children's Services and Skills. It regulates childcare for children from birth to 18 years of age. Ofsted operates two registers:

The Early Years Register: If a provider is caring for children from the age of birth to 5 years for more than two hours a day, on more than fourteen days per year they must register with Ofsted on the Early Years Register and meet the requirements of the Early Years Foundation Stage.

The Childcare Register: A childcare provider must register on the compulsory part of the Childcare Register if they provide care for children aged 5 to 8 years for more than two hours a day on more than fourteen days per year. A childcare provider will be on both the Early Years Register and the Childcare Register if they care for children under and over the age of 5 years. Some childcare providers who care for children over the age of 8 years, who provide care in the child's home, are activity based i.e., sports coaching or for very short periods of time can join the voluntary part of the childcare register.

Schools

Maintained Nursery Classes and Governor Led Provision (section 27) are included within an overall school inspection and are not required to have a separate Early Years Ofsted registration; however, they must follow the Early Years Foundation Stage (EYFS) Statutory Framework.



Overview of Government Childcare Initiatives in Lancashire

Over the past year, several new government initiatives have been introduced to support the expansion of childcare provision. The following section provides a summary of these initiatives and outlines how they have been implemented across Lancashire to create new childcare places and enhance existing provision.

Extension of Early Education Funding

- From April 2024, eligible working families with two-year-old children have been able to access 15 hours of Early Education Funding per week.
- From September 2024, this entitlement was extended to include working families with children aged 9 months and above.
- From September 2025, eligible working families will be able to access 30 hours of Early Education Funding per week, starting from when their child is 9 months old until they begin school.

To support this expansion, capital funding has been allocated to increase the availability of places for children under the age of two and for two-year-olds in priority areas.

During this year, we have supported 26 projects and created 289 new early education places for children aged two and under.

National Wraparound Programme

The National Wraparound Programme is to support families returning to work or increasing their working hours by improving access to before and after school childcare. To achieve this, the programme provided both capital and revenue funding to:

- Establish new wraparound childcare provision,
- Expand the number of places in existing settings
- Extend provision hours to meet the core offer of 8:00am to 6:00pm.

During the autumn term, capital & revenue funding was allocated to 27 projects across Lancashire, resulting in the creation of 575 new wraparound childcare places. In addition, revenue funding has been made available to support operational costs, including staffing, resources and other running expenses. Over the course of the year, 109 projects have received revenue funding, contributing to the creation of 1880 additional childcare places across Lancashire.

The programme is helping to ensure that families across Lancashire have access to flexible, affordable childcare to enable them to access work or training.

School Based Nursery Capital Funding

Between October and December 2024, schools were invited to apply to the Department for Education for capital funding to support the development of school-based nursery provision.

- 65 schools initially expressed interest in accessing the funding
- 26 schools proceeded to submit formal applications
- 10 schools were successfully awarded capital funding

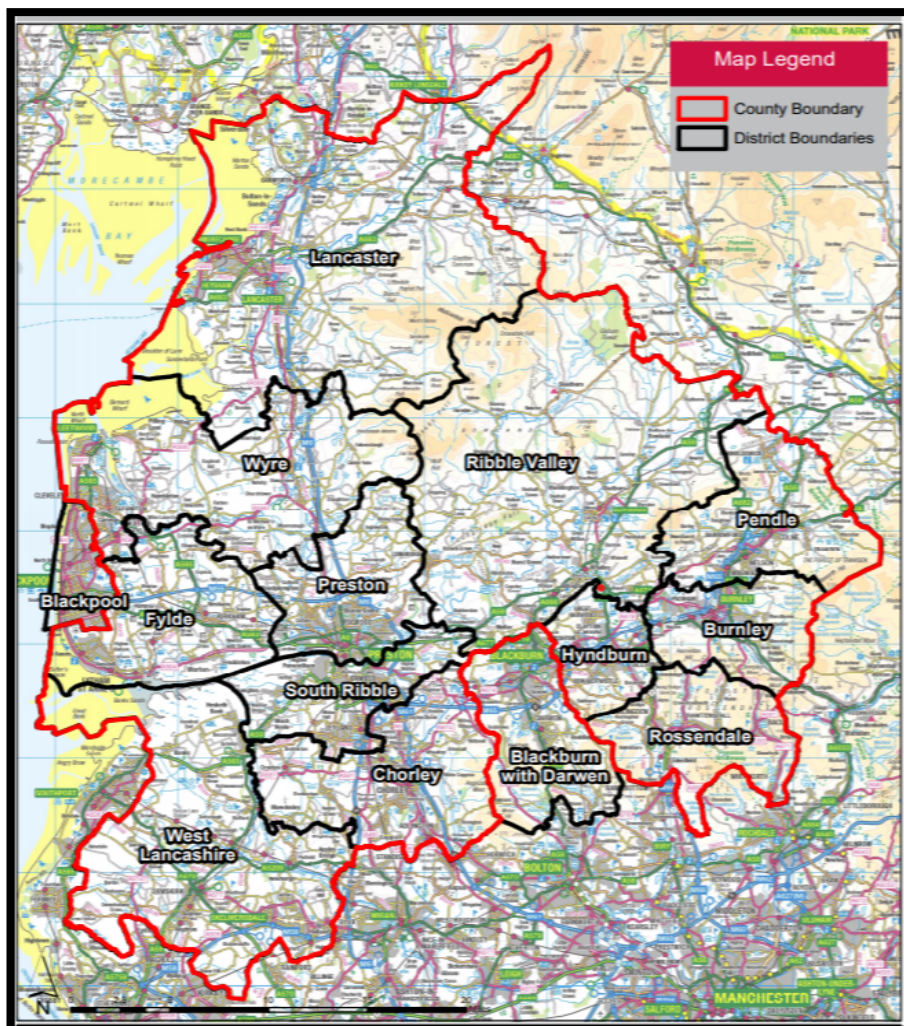
These successful projects will result in the creation of new early years places within school-based provision starting from September 2025.



Lancashire Overview

Lancashire County Council is the fourth largest County Council in the country. The population is 1,227,076. The population for 0-19 year olds within this figure is 281,290. Lancashire is made up of 12 districts. Below you can see a map of Lancashire showing the county and district boundaries.

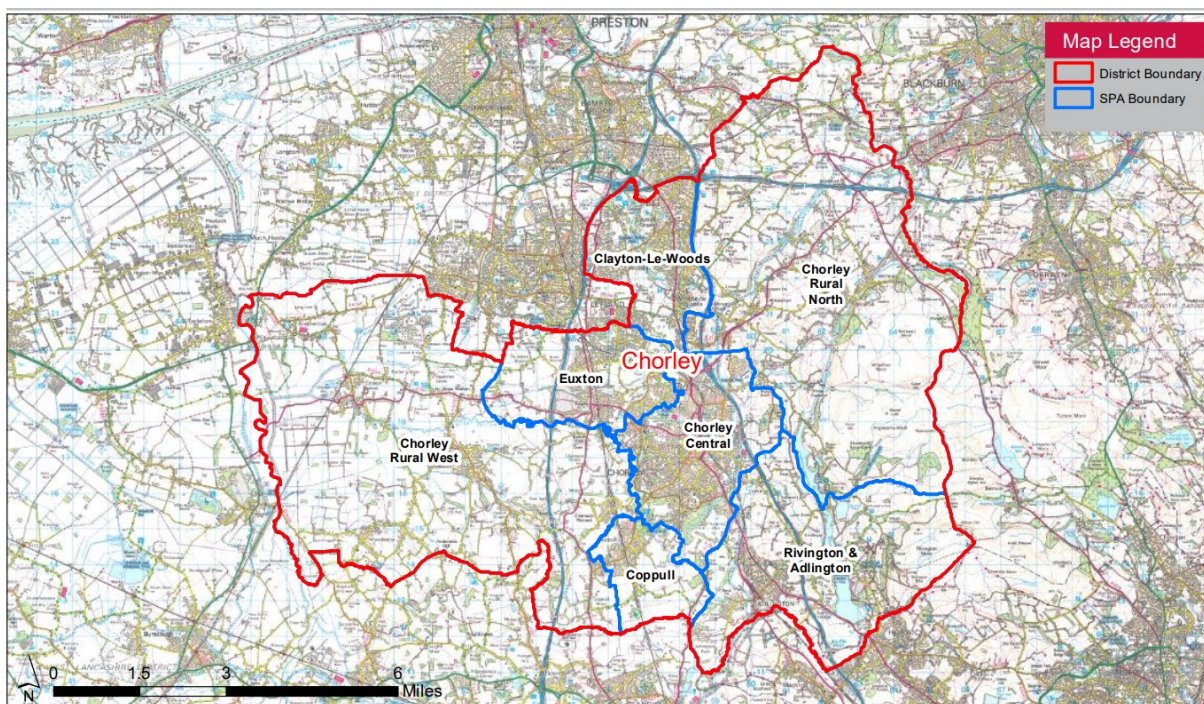
Lancashire's defining characteristics are its size and diversity. Each district has its own unique demography and geography. It is an area of vast contrasts with busy urban centres, coastal regions and large agricultural areas. For the purposes of this report these districts have been broken down further into localised geographical areas.



Chorley

The map below shows the local geographical areas for the Chorley district, these include.

- Chorley Central
- Chorley Rural North
- Chorley Rural West
- Clayton-le-Woods
- Coppull
- Euxton
- Rivington and Adlington



Local Demographics

Chorley is a district in central Lancashire, it covers 203 square kilometres and the number of people per km² is similar to the North West average.

Over recent years the population has risen from 97,000 in 1991 to 118,870 in 2020. It is estimated that between 2018 and 2043 the population of Chorley will increase by 17.8%, the highest growth rate in Lancashire. It is also predicted the number of households will increase by 24.4% between 2018 and 2043.

The table below you can see the population figures for the district.

Area	Total Population	0-1 year olds	1 year olds	2 year olds	3&4 year olds	5-11 year olds
Chorley Central	42076	397	401	426	894	3547
Chorley Rural North	7091	49	56	54	121	522
Chorley Rural West	16915	124	104	108	247	1191
Clayton-le-Woods	28429	311	289	341	699	2711
Coppull	8271	79	85	78	170	692
Euxton	7918	71	61	74	154	647
Rivington & Adlington	7924	65	65	76	149	633
Chorley	118624	1096	1061	1157	2434	9943

The 2019 Indices of Multiple Deprivation (IMD) shows that Chorley was ranked the 193rd most deprived area out of 317 districts and unitary authorities in England.

Area	No. of wards	No. of LSOA's	IMD average rank *	IMD in 20% most deprived
Chorley	14	70	193	No

Chorley is part of Central Lancashire it has good transport links with the M61 and M65 providing access to the major motorways. Public transport can be easily accessed with railway stations and bus routes providing families with options for commuting throughout the district and beyond.



Parent Survey

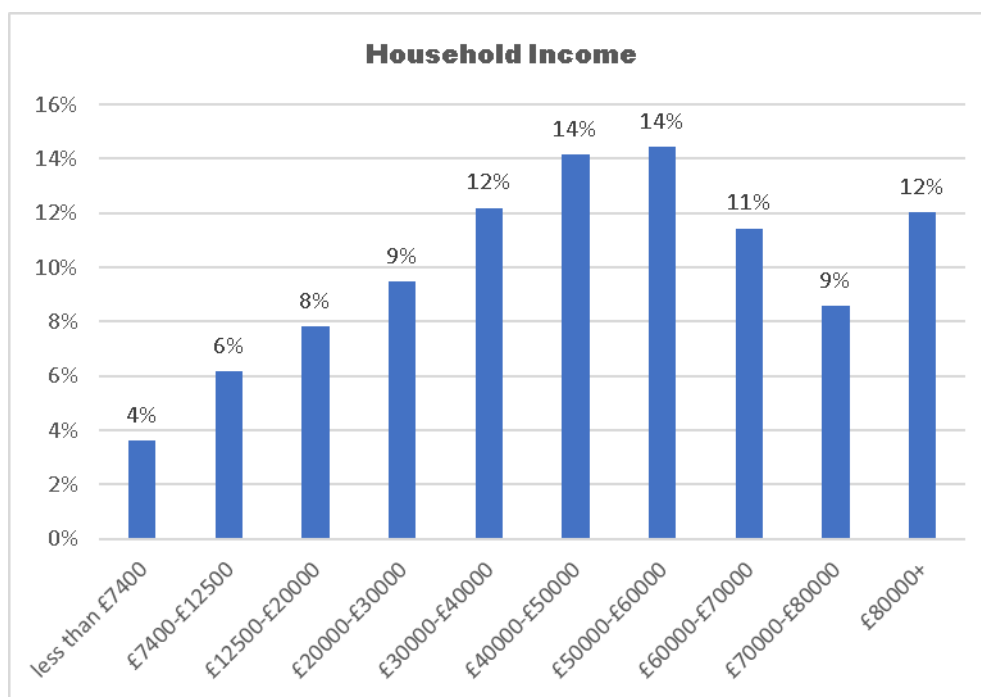
As part of our statutory duty, we gathered the views of parents and families that use formal childcare. Using the help of our early year's providers, parents were asked to complete a short online survey. Questions in the survey covered topics such as current childcare usage patterns, opening times, paying for childcare, satisfaction levels, Early Education Funding (EEF).

There were 664 completions in total. Whilst the majority of responses were from Preston, Chorley, Lancaster and South Ribble we did receive submissions from all 12 districts. The summary below is provided at a Lancashire level.

Your Household

Nearly all respondents to our survey are married or living with a partner, in most cases both partners are working full time. The majority of those surveyed have children aged 0-4 years. The most used childcare provider types are After School Club and Day Nursery.

We asked parents about their household income; this is displayed in the graph below.



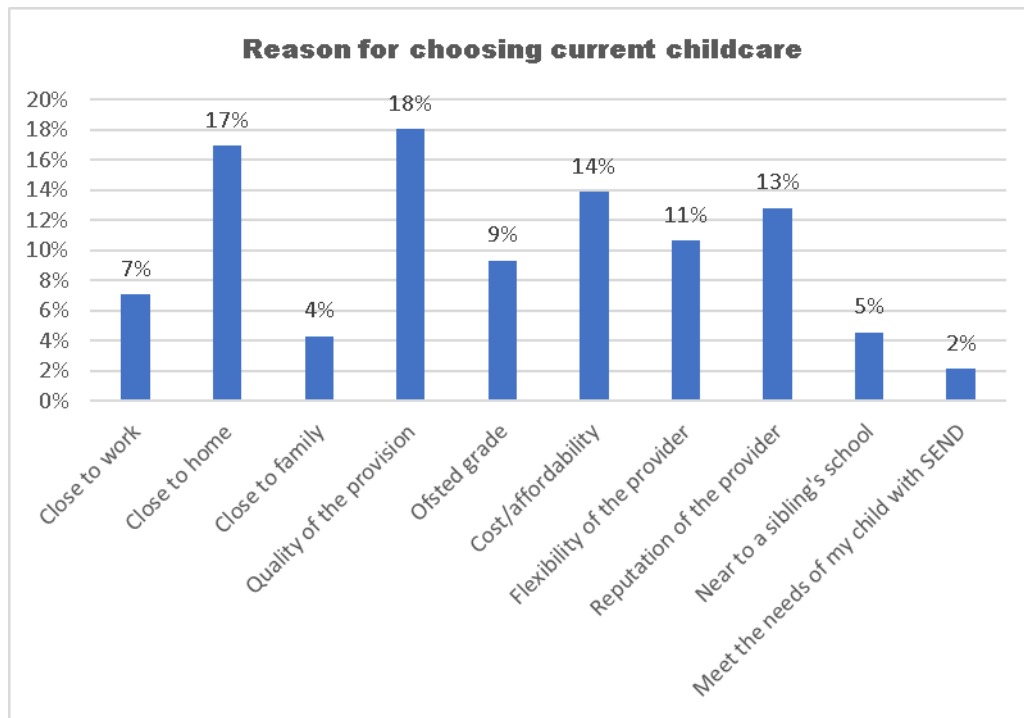
Childcare Needs

On average most parents/carers need between 10 and 30 hours of childcare per week. Nearly half of the responses received said they use childcare because they work, 23% told us it is also for their child's learning and development and a small percentage state they use childcare for respite and to look for work. 5% of parents/carers access childcare solely to use their child's Early Education Funding. A small number of parents need childcare after 6pm or other patterns not specified.

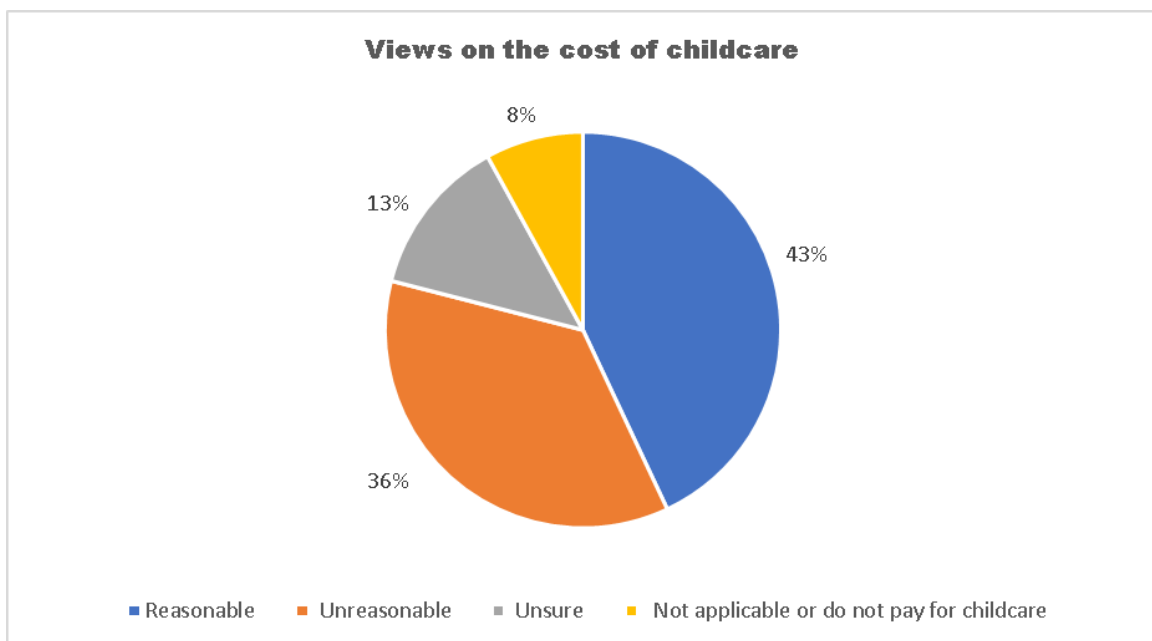
Nearly three quarters of the respondents said that finding information about suitable childcare was easy.



We asked parents/carers what their most important factors were when choosing childcare, the responses are summarised below.

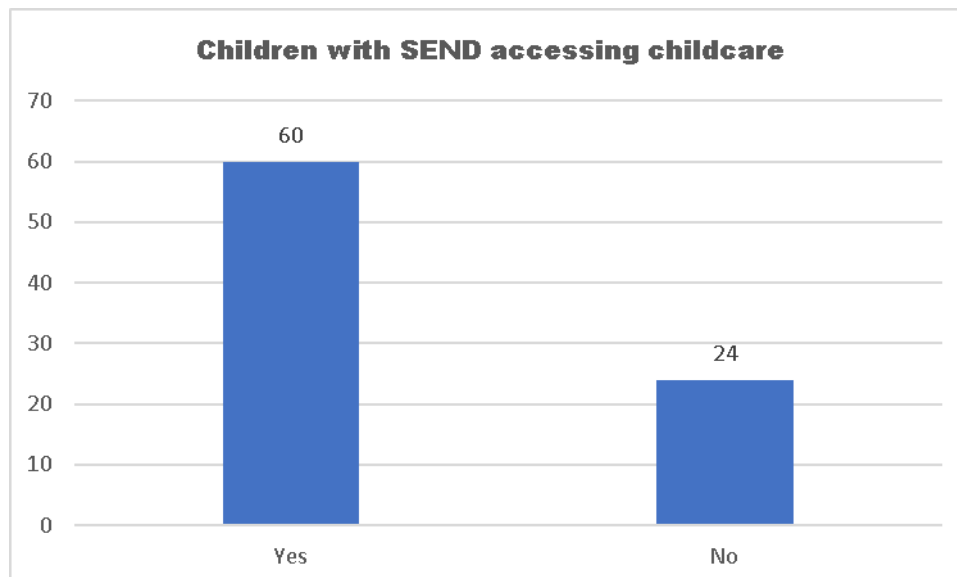
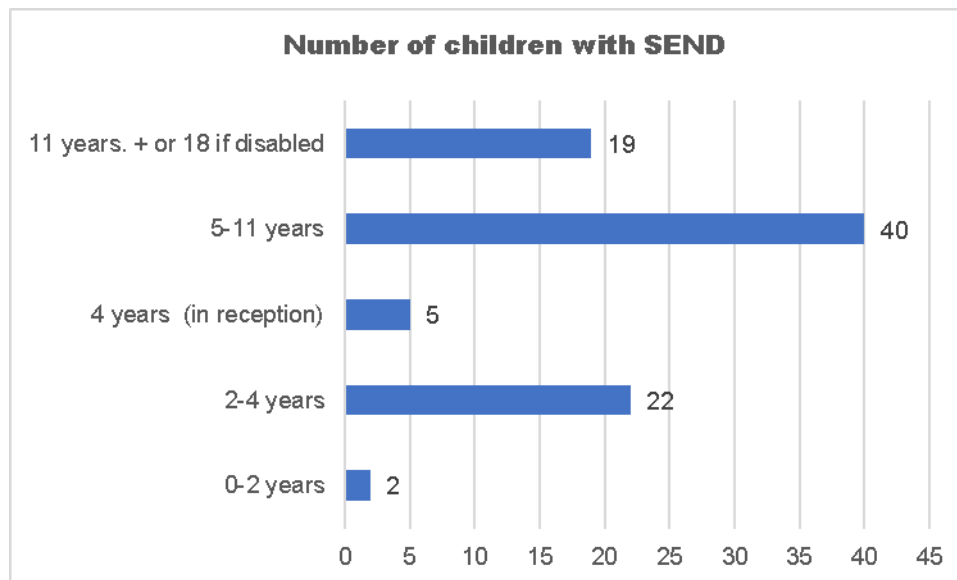


The chart below shows parent/carer views on the cost of childcare. Over half of parents/carers that completed our survey pay for their childcare using wages, followed by the Tax-Free Childcare scheme and finally using Early Education Funding.



Special Educational Needs and/or Disabilities (SEND)

We asked parents/carers if they have a child or children with SEND. The graphs below show the number of children with SEND and the following graph shows those who access formal childcare.



Early Education Funding

Nearly all our respondents were aware of the Early Education Funding for 2,3&4 year olds. 56% access a funded place however, 44% do not, this is due to the child's age either being too young or too old for funded places. Most parents access funded places at a Day Nursery or Pre-School Playgroup. 5% access funded places with a registered Childminder.



Childcare Provision

In Lancashire we have a large number of childcare providers offering a variety of childcare options and flexibility to enable families to access work and training.

The information provided in the tables below was captured in Autumn term 2024 and shows an overview of childcare providers in the area.

When counting the number of different providers, we include those who may offer more than one type of provision. In our provider type count this would be shown as three types of provision e.g. Pre-School Playgroup, Breakfast Club and After School Club however, those different types of provision may all come under one Ofsted registration. In the Movement in the Market and Quality of Provision sections of this report the numbers shown represent the number of Ofsted registrations rather than the number of provider types.

Provider Type Breakdown

The table below shows the district provider types available; on the following page the tables show provider types at a more localised level.

	Chorley		
Provider Type	Number	Responses	% Responses
Childminder	34	32	94%
Day Nursery	40	36	90%
Pre School Playgroup	8	7	88%
Maintained Nursery School	2	1	50%
Maintained Nursery Class	7	6	86%
Section 27	11	11	100%
Nursery Unit of Independent Schools	0	0	0%
Breakfast Club	33	27	82%
After School Club	32	28	88%
Holiday Scheme	13	12	92%
Total	180	160	89%



	Chorley Central			Chorley Rural North			Chorley Rural West			Clayton-le-Woods		
Provider Type	Number	Responses	% Responses	Number	Responses	% Responses	Number	Responses	% Responses	Number	Responses	% Responses
Childminder	12	12	100%	1	1	100%	4	4	100%	8	8	100%
Day Nursery	11	10	91%	2	2	100%	8	8	100%	9	8	89%
Pre School Playgroup	2	1	50%	0	0	0%	2	2	100%	1	1	100%
Maintained Nursery School	2	1	50%	0	0	0%	0	0	0%	0	0	0%
Maintained Nursery Class	2	1	50%	0	0	0%	0	0	0%	3	3	100%
Section 27	3	3	100%	1	1	100%	3	3	100%	4	4	100%
Nursery Unit of Independent Schools	0	0	0%	0	0	0%	0	0	0%	0	0	0%
Breakfast Club	12	7	58%	1	1	100%	3	2	67%	8	8	100%
After School Club	10	7	70%	1	1	100%	3	2	67%	9	9	100%
Holiday Scheme	6	5	83%	0	0	0%	1	1	100%	3	3	100%
Total	60	47	78%	6	6	100%	24	22	92%	45	44	98%

	Coppull			Euxton			Rivington & Adlington		
Provider Type	Number	Responses	% Responses	Number	Responses	% Responses	Number	Responses	% Responses
Childminder	4	2	50%	4	4	100%	1	1	100%
Day Nursery	1	1	100%	6	5	83%	3	2	67%
Pre School Playgroup	1	1	100%	1	1	100%	1	1	100%
Maintained Nursery School	0	0	0%	0	0	0%	0	0	0%
Maintained Nursery Class	1	1	100%	0	0	0%	1	1	100%
Section 27	0	0	0%	0	0	0%	0	0	0%
Nursery Unit of Independent Schools	0	0	0%	0	0	0%	0	0	0%
Breakfast Club	2	2	100%	4	4	100%	3	3	100%
After School Club	2	2	100%	4	4	100%	3	3	100%
Holiday Scheme	0	0	0%	2	2	100%	1	1	100%
Total	11	9	82%	21	20	95%	13	12	92%

Movement in the Market

The table below shows the number of new Ofsted childcare registrations across Chorley alongside the number of providers who have closed.

In Chorley whilst there have been some closures during the past 12 months, overall, we have seen 6 providers join the childcare market and 14 leave. These numbers reflect the changes in the market and in some cases, provision may have been taken over by another provider or organisation. This shows in our data as a closed provider and a new provider, however, the provision and places available have remained in the area.

Area	Total Number of Providers	New/Altered Providers	Closed Providers	Net Change	% Change
Chorley Central	43	2	5	-3	-7%
Chorley Rural North	5	0	2	-2	-40%
Chorley Rural West	21	2	1	1	5%
Clayton-Le-Woods	28	1	2	-1	-4%
Coppull	8	1	1	0	0%
Euxton	14	0	0	0	0%
Rivington & Adlington	7	0	3	-3	-43%
Chorley	126	6	14	-8	-6%

Summary of Movement in the Market

Over the last year in Chorley 14 providers have closed, this includes 7 Childminders, 3 Day Nurseries, 1 Maintained Nursery Class, 1 After School Club, 1 Breakfast Club and 1 Holiday Club. However, 6 providers have opened over the last year, and this includes 1 Childminder, 1 Day Nursery, 3 Governor Led Provision (s27) and 1 Holiday Scheme.

Whilst we have seen these changes in the area, we do still have capacity, and some providers are willing to increase their capacity if demand requires it.

Area	Settings with Potential of Increasing Capacity if Required
Chorley Central	10
Chorley Rural North	0
Chorley Rural West	8
Clayton-le-Woods	12
Coppull	0
Euxton	6
Rivington & Adlington	4
Chorley	40



Childcare Places

In this section we look at childcare places available in the area. The data is gathered over four weeks in Autumn term and should be seen as a snapshot of places at that time. Assessing childcare places is a complex process which depends on a large number of variables including but not limited to, the effects of changes in child population, demographics, housing developments, movement of families within an area, local geography and parental choice. The expansion of the Early Years Funding Entitlements and the Wraparound Programme is currently being delivered and rolled out, this is being reported on separately and is not included in this report.

The number of childcare places should be seen as an estimate as a provider will be limited by the requirements of the Statutory Framework for the Early Years Foundation Stage (EYFS). This includes having suitable floor space and staff to child ratio. Insurance policies may stipulate a maximum number of children they can care for at any one time.

The tables below show information for both the maximum number of places available, and the number of places a setting is currently 'working to' at any one time. For example, whilst we have floor space for 24 children, we are staffed for 16 children, therefore in the example given a provider would be working to 16 places.

0-4 Year Olds

Area	Population requiring childcare	Maximum Pumber of Places	Surplus Capacity (Maximum Places)	Working to Places	Surplus Capacity (Working to)
Chorley Central	1376	1978	602	1776	400
Chorley Rural North	176	186	10	186	10
Chorley Rural West	361	1006	645	874	513
Clayton-le-Woods	1057	1664	607	1541	484
Coppull	263	314	51	314	51
Euxton	232	846	614	819	587
Rivington & Adlington	221	569	348	565	344
Chorley	3687	6563	2876	6075	2388

Summary of Childcare Places 0-4 Year Olds

When removing the population requiring childcare from the maximum places and the working to places. The table above shows we have sufficient places for 0-4 year olds at district level.

40 providers still have the capacity to increase to their maximum number of places if demand requires it. Families may also choose to travel across Chorley and neighbouring districts to access a childcare place. We will continue to monitor childcare places in the area, and in particular at any closures and any changes in demand for childcare.



5-14 Year Olds

Area	Population requiring childcare	Maximum Number of Places	Surplus Capacity (Maximum Places)	Childcare places working to	Surplus Capacity (Working to)
Chorley Central	472	832	360	832	360
Chorley Rural North	71	80	9	80	9
Chorley Rural West	159	388	229	382	223
Clayton-le-Woods	365	592	227	546	181
Coppull	93	170	77	170	77
Euxton	88	547	459	492	404
Rivington & Adlington	83	187	104	177	94
Chorley	1330	2796	1466	2679	1349

Summary of Childcare Places 5-14 Year Olds

Childcare for children of school age is complex to report on due to the different requirements for Ofsted registration. Some schools in Lancashire operate their childcare under Section 27 of the (Education Act 2002), which allows schools to operate community services, including childcare, directly under the management of the school and its Governors. This type of provision is exempt from Ofsted registration, as it is inspected as part of the school inspection. Therefore, these childcare places may not all be counted in our data.

This is also true of childcare solely for over 8 year olds as Ofsted registration for these providers is voluntary. As a result, there are likely to be more places available than we can predict, particularly in this age group.

Funding from the Wraparound Programme has created 180 new places for Before and After School provision in Chorley. These places have mainly been created after the data from this report has been gathered.

It is difficult to predict the population requiring childcare for this age group as families have more flexible working options available to them. We will continue to monitor places in the area in case of any change in demand.



Early Education Funding

15 Hours Funded Offer

Every 3&4 year old is eligible for 15 hours funded Early Education the term after their third birthday until they start school. If parents receive some additional forms of government support or are working and on low income, they can apply for 15 hours of Early Education Funding for their 2 year old. Children can also be eligible for this funding if they:

Are looked after by the council, have left care under a Special Guardianship Order, Child Arrangement Order or Adoption Order, if they get Disability Living Allowance, if they have a statement of Special Educational Needs (SEN), a current Education Health Care Plan (EHC), they are identified as a Child In Need, have a Child Protection Plan, are children of Gypsy Roma Heritage living in Lancashire, are children of Serving Armed Forces Personnel residing in Lancashire or are children who meet the criteria for Portage.

From April 2024 eligible working families of 2 year olds could also apply for 15 hours of early education funding. This was extended to eligible working families of children from 9 months in September 2024. More information is available at www.childcarechoices.gov.uk

Parents can choose to access this provision flexibly and use more than one provider to meet their childcare needs. The funding is available for 15 hours per week for 38 weeks per year. Some parents may choose more flexibility and use the funding throughout the year.

Early Education Funding for 3&4 Year Olds

The eligible population data is taken from the Office for National Statistics (ONS) which may not reflect the actual number of 3&4 year olds living in an area. The table below shows the take up of 15 hours Early Education Funding.

Area	Summer Term 2024			Autumn Term 2024			Spring Term 2025		
	Eligible Population	No of Children	% take up	Eligible Population	No of Children	% take up	Eligible Population	No of Children	% take up
Chorley Central	894	830	93%	894	808	90%	894	832	93%
Chorley Rural North	121	115	95%	121	117	97%	121	118	98%
Chorley Rural West	247	232	94%	247	242	98%	247	240	97%
Clayton-le-Woods	699	613	88%	699	592	85%	699	590	84%
Coppull	170	144	85%	170	144	85%	170	145	85%
Euxton	154	148	96%	154	138	90%	154	133	86%
Rivington & Adlington	149	126	85%	149	129	87%	149	122	82%
Chorley	2434	2208	91%	2434	2170	89%	2434	2180	90%

Early Education Funding for 2 Year Olds

Eligible population data is provided by the Department for Education based on a snapshot in time. Where the percentage take up is over 100% families may have become eligible after the data was provided, therefore are not included in the eligible population. The table below shows the take up Early Education Funding for families receiving, some additional forms of government support or if they are working and on low income.

Area	Summer Term 2024			Autumn Term 2024			Spring Term 2025		
	Eligible Population	No of Children	% take up	Eligible Population	No of Children	% take up	Eligible Population	No of Children	% take up
Chorley Central	121	125	103%	114	116	102%	99	97	98%
Chorley Rural North	10	9	90%	5	5	100%	6	5	83%
Chorley Rural West	14	9	64%	10	7	70%	10	12	120%
Clayton-Le-Woods	48	47	98%	59	56	95%	63	51	81%
Coppull	15	15	100%	21	19	90%	18	16	89%
Euxton	6	6	100%	8	6	75%	13	8	62%
Rivington & Adlington	9	8	89%	9	6	67%	7	7	100%
Chorley	223	219	98%	226	215	95%	216	196	91%

From April 2024 working families of 2 year olds can access 15 hours of Early Education Funding, the table below shows those providers offering the funding, if they are able to meet demand and the number of families claiming the funding.

Area	Offering Early Education Funding			Able to meet demand			Number of Families Claiming Funding		
	Yes	No	N/A	Yes	No	N/A	Summer Term 2024	Autumn Term 2024	Spring Term 2025
Chorley Central	34	3	6	30	4	9	186	189	189
Chorley Rural North	3	1	0	3	0	1	44	36	33
Chorley Rural West	26	2	1	26	0	3	79	101	94
Clayton-le-Woods	28	12	5	23	8	14	178	191	176
Coppull	7	2	0	4	3	2	48	41	41
Euxton	16	0	0	16	0	0	39	59	54
Rivington & Adlington	6	0	3	2	4	3	24	38	40
Chorley	120	20	15	104	19	32	598	655	627

From September 2024 working families of children 9 months+ can access 15 hours of Early Education Funding, the table below shows those providers offering the funding, if they are able to meet demand and the number of families claiming the funding.

Area	Offering Early Education Funding			Able to Meet Demand			Number of Families Claiming Funding	
	Yes	No	N/A	Yes	No	N/A	Autumn Term 2024	Spring Term 2025
Chorley Central	30	7	6	26	4	13	194	196
Chorley Rural North	2	1	1	2	0	2	26	35
Chorley Rural West	21	5	3	19	2	8	70	75
Clayton-le-Woods	28	12	5	23	5	17	174	163
Coppull	6	3	0	1	5	3	45	44
Euxton	12	3	1	12	0	4	49	54
Rivington & Adlington	6	0	3	2	4	3	40	39
Chorley	105	31	19	85	20	50	598	606



30 hours Funded Offer

Eligible working parents of 3&4 year olds can apply for 30 hours of Early Education from the term after their child turns 3 until they reach school age. Parents can choose to access this provision flexibly and use more than one provider to meet their childcare needs. The funding is available for 30 hours per week for 38 weeks per year. Some parents may choose more flexibility and use the funding throughout the year.

From September 2025 the funding will be extended to 30 hours for eligible working parents of children aged 9 months up to school age, therefore the take up of this provision in Lancashire is not included in this report. Working parents are eligible if they earn equal to a minimum of 16 hours at the National Minimum or Living Wage and less than £100,000 adjusted net income per year. Working parents can apply direct at www.childcarechoices.gov.uk.

More information about Early Education Funding in Lancashire can be found at <https://www.lancashire.gov.uk/children-education-families/early-years-childcare-and-family-support/paying-for-childcare/>

The table below shows working families accessing 30 hours of Early Education Funding, the table below shows those providers offering the funding, if they are able to meet demand and the number of families claiming the funding.

Area	Offering Early Education Funding			Able to meet demand			Number of Families Claiming Funding		
	Yes	No	N/A	Yes	No	N/A	Summer Term 2024	Autumn Term 2024	Spring Term 2025
Chorley Central	42	1	0	39	3	1	358	234	325
Chorley Rural North	4	0	0	4	0	0	68	46	59
Chorley Rural West	27	0	2	29	0	0	134	88	126
Clayton-le-Woods	36	9	0	31	9	5	341	198	268
Coppull	9	0	0	5	4	0	70	52	69
Euxton	16	0	0	16	0	0	90	50	70
Rivington & Adlington	9	0	0	5	4	0	74	39	55
Chorley	143	10	2	129	20	6	1135	707	972



Accessibility of Childcare

Some of the main factors which influence parent's decisions when considering childcare include opening hours, the cost of childcare, and the quality of provision, including provision for children with Special Educational Needs and or Disabilities (SEND). Flexibility of childcare enables parents to have a greater choice of provision and to balance work and family life. A summary of opening hours is contained in the table below. Please note if a provider selected multiple provider types in our survey and for example has selected a Day Nursery and Holiday Club and the Day Nursery is open 50 weeks of the year this will skew the opening hours for the Holiday Club. It may exaggerate the number of weeks the Holiday Club is open.

Opening Hours

Provider Type	Average Opening Days	Average Opening Weeks	Average Opening Hours	Open Weekends (%)
Childminder	4	45	10	0%
Day Nursery	5	49	14	0%
Pre-School Playgroup	5	42	9	0%
Maintained Nursery School	5	38	8	0%
Maintained Nursery Class	5	38	6	0%
Governor Led Provision (s27)	5	38	7	0%
Nursery Unit of Independent Schools	0	0	0	0%
Breakfast Club	5	42	1	0%
After School Club	5	42	3	0%
Holiday Scheme	5	11	9	0%
Chorley	5	35	7	0%

Help Paying for Childcare

There are many different kinds of financial support available to help families pay for childcare. The support available will depend on individual circumstances.

Support available for families

- Child Benefit
- Universal Credit
- Childcare Element of Universal Credit
- Childcare Vouchers (ends April 2026)
- Tax-Free Childcare
- Early Education Funding for 9mths - 4 year olds

Support available for parents who are studying

- Care to Learn (C2L)
- Childcare Grant
- Discretionary Learner Support Fund, Hardship Fund/Bursaries
- Parents Learning Allowance (PLA)
- Access to Learning Fund (ALF)
- NHS Student Grants and Bursaries
- Educational or Charitable Trust Funding

Families living with disabilities or special educational needs

- Disability Living Allowance (DLA)
- Personal Independence Payment (PIP) (for children aged over 16)
- Direct Payments
- Child Disability Additions element of Universal Credit

<https://www.lancashire.gov.uk/children-education-families/early-years-childcare-and-family-support/paying-for-childcare/help-paying-for-childcare/>

Childcare Fees

Cost remains a deciding factor when parents are looking for childcare, we asked our providers about their fees, the responses are summarised below.

Provider Type	Under 2's				2 year olds				3-4 year olds				5-14 year olds (18 yrs SEND)			
	Hour	Session	Day	Week	Hour	Session	Day	Week	Hour	Session	Day	Week	Hour	Session	Day	Week
Childminder	£5.27		£44.80	£201.00	£5.43		£44.80	£201.00	£5.43		£44.80	£203.93	£5.40	£11.25	£43.70	£190.75
Day Nursery	£6.50		£60.84	£275.88	£6.21		£55.69	£253.55	£6.07	£15.00	£54.50	£248.60				
Pre-School Playgroup	£8.33	£30.50	£54.33	£288.00	£7.00	£30.00	£44.33	£242.25	£7.00	£28.60	£42.83	£237.25				
Maintained Nursery School					£6.00	£19.00	£42.00	£210.00	£5.00	£15.00	£35.00	£175.00				
Maintained Nursery Class					£5.00	£15.33	£32.00	£171.50	£5.00	£14.75	£30.75	£153.25				
Governor Led Provision (s27)					£5.33	£15.50	£38.00	£189.00	£5.22	£15.60	£38.33	£191.00				
Nursery Unit of Independent Schools																
Breakfast Club						£6.50				£6.00				£5.93		
After School Club						£12.50				£9.58				£9.26		
Holiday Scheme											£31.67	£148.33			£26.91	£133.89

Summary of the Cost of Childcare

Childcare providers have supplied us with their hourly, sessional, daily and weekly fees. Some may have different charging patterns, and this can depend on age, opening times and additional services offered. Therefore, it is more difficult to compare childcare charges across the sector. In Chorley a parent can expect to pay between £5.00 and £8.33 per hour

Pre School Playgroup is the provider type that has the most expensive hourly rate at £8.33 per hour. Maintained Nursery School and Maintained Nursery Class is the provider type that has the lowest hourly rate at £5.00. Childcare fees in Chorley appear consistent without many extreme variables in hourly, sessional, daily and weekly charges. This should be seen as a guide to childcare fees in Chorley.

Quality of Childcare Provision

Quality of care and education is one of the most important aspects when a parent is choosing childcare for their children. Access to high quality childcare has long term benefits for children, particularly those from disadvantaged families. The tables below show an overview of Ofsted inspection outcomes for Outstanding, Good, Requires Improvement and Inadequate providers. The tables also include providers who have yet to be inspected and those providers on the childcare register who receive a met or not met outcome. Childminders who are part of a Childminding Agency receive an overall judgement, in the table below this shows as effective or compliant. The majority of children in Lancashire will have access to good high-quality childcare.

Childcare on Domestic Premises – Childminders

Area	Outstanding	Good	Requires Improvement	Inadequate	Met	Not Met	Not Yet Inspected	Effective	Compliant
Chorley Central	1	9	0	0	0	0	0	2	0
Chorley Rural North	0	0	0	0	0	0	1	0	0
Chorley Rural West	0	4	0	0	0	0	0	0	0
Clayton-le-Woods	0	6	1	0	0	0	1	0	0
Coppull	2	2	0	0	0	0	0	0	0
Euxton	1	3	0	0	0	0	0	0	0
Rivington & Adlington	0	1	0	0	0	0	0	0	0
Chorley	4	25	1	0	0	0	2	2	0

Childcare on Non-Domestic Premises – including, Day Nurseries, Pre-School Playgroups, Nursery Unit of Independent Schools, Maintained Nursery Classes, Maintained Nursery Schools, Governor Led Provision (S27), Breakfast Clubs, After School Clubs and Holiday Clubs

Area	Outstanding	Good	Requires Improvement	Inadequate	Met	Not Met	Not Yet Inspected	Excellent	Compliant
Chorley Central	6	18	1	0	2	0	3	0	1
Chorley Rural North	1	2	0	0	1	0	0	0	0
Chorley Rural West	3	11	0	0	1	0	2	0	0
Clayton-le-Woods	1	16	0	0	1	0	2	0	0
Coppull	0	4	0	0	0	0	0	0	0
Euxton	1	6	0	0	2	0	1	0	0
Rivington & Adlington	1	4	0	0	0	0	1	0	0
Chorley	13	61	1	0	7	0	9	0	1

Summary of the Quality of Provision

From the information shown we can see that 103 childcare providers in Chorley have been inspected and are Good and Outstanding. 11 providers are still awaiting inspection. Some providers may not have had early years children present at the time of inspection and some providers may only be registered on the Childcare Register, therefore will have received a Met or Not Met judgement. Chorley Central has the highest number of Outstanding providers. We can summarise that families accessing childcare in these areas are using high-quality childcare provision.



Provision for Children with Special Educational Needs and/or Disabilities (SEND)

It is vital for children with SEND to be supported within high quality provision with practitioners who have an excellent understanding and are able to carry out effective observation, assessment and planning. Inclusion should be embedded as part of everyday practice, where staff are flexible and ensure individual needs are met.

The tables below show providers responses about their provision for children with SEND.

Area	Do You Offer Places for Children with SEND		Number of Children Accessing with SEND
	YES (%)	No (%)	
Chorley Central	91%	9%	115
Chorley Rural North	100%	0%	11
Chorley Rural West	95%	5%	60
Clayton-le-Woods	93%	7%	133
Coppull	83%	17%	32
Euxton	92%	8%	24
Rivington & Adlington	100%	0%	9
Chorley	93%	7%	384

Area	Changes in Demand		
	Remained the same	Decreased	Increased
Chorley Central	66%	9%	25%
Chorley Rural North	40%	0%	60%
Chorley Rural West	40%	10%	50%
Clayton-le-Woods	56%	8%	36%
Coppull	40%	20%	40%
Euxton	42%	0%	58%
Rivington & Adlington	80%	0%	20%
Chorley	54%	8%	38%

Summary of SEND provision

93% of providers in Chorley offer places for children with SEND. The numbers of children accessing a SEND place were highest in Chorley Rural North and Rivington & Adlington.

54% of providers in Chorley who responded to our survey said that demand for SEND places remained the same. Demand for SEND places has increased most in Chorley Rural North with an overall increase of 38% across Chorley.



Business and Finance

Sustainability has been one of the main challenges for childcare providers. Changes in demand for childcare and rising staffing costs has placed financial pressure on the sector.

Some providers are struggling to recruit knowledgeable, qualified practitioners. This has led, in some areas to settings reducing childcare places available or being unable to expand.

Moving forwards, we will continue to monitor the take up of childcare places to understand the impact of the extended funded entitlements and the recruitment and retention of staff.

Childcare providers were asked about the sustainability of their business and the impact of any changes over the last year. The tables that follow summarise the responses.

Area	Are you Sustainable	
	YES (%)	No (%)
Chorley Central	100%	0%
Chorley Rural North	100%	0%
Chorley Rural West	94%	6%
Clayton-le-Woods	91%	9%
Coppull	73%	27%
Euxton	82%	18%
Rivington & Adlington	100%	0%
Chorley	93%	7%

Area	Timescale of Providers Being Concerned About Longer Term Viability				
	3 months	6 months	12 months	24 months	No concerns
Chorley Central	0%	0%	11%	6%	83%
Chorley Rural North	0%	0%	0%	17%	83%
Chorley Rural West	0%	3%	18%	0%	79%
Clayton-le-Woods	0%	8%	26%	9%	57%
Coppull	0%	9%	73%	0%	18%
Euxton	5%	0%	50%	9%	36%
Rivington & Adlington	0%	36%	0%	9%	55%
Chorley	1%	5%	24%	6%	64%

Summary of Business and Finance

At the time of responding to our survey the majority of providers in Chorley indicated they are currently sustainable. 24% of providers in Chorley have concerns about their longer-term viability within the next 12 months.



Key Findings and Action Plan

Area	Key Findings
Chorley	<p>Chorley has 126 Ofsted registered childcare providers. Over the last 12 months the net change in the number of providers is -8. 40 providers said they would increase their numbers if demand required it. Chorley district shows a surplus in places across all age groups. Average EEF2 take up for the district is 95% and the average take up for EEF 3&4 year olds is 90%. This is an decrease in take up of EEF 2 since our last published CSA. 98% of providers have received an Ofsted judgement that was Good or Outstanding. 93% of providers offer places for children with SEND, 54% have said demand for places has remained the same. 93% of providers in Chorley are currently sustainable, this is an increase since last year, 24% are concerned about their longer term viability over the next 12 months.</p>
	<p>Actions</p> <ol style="list-style-type: none"> 1. We will monitor providers who are concerned about the longer term viability. 2. We will continue to monitor the take up for Early Education Funding. 3. We will continue to support providers with staff recruitment by advertising vacancies on our website.

Conclusion

To summarise, Chorley has sufficient childcare places to meet the needs of working parents. Our latest assessment shows we have childcare places available across all age ranges and all provider types at district level. We will work with local providers to understand any changes in parental needs and capacity within existing settings. We will continue to monitor and respond to areas where demand for childcare remains low.

As there have been a number of new government initiatives this year including the expansion of early years funding entitlements which has provided grant funding to create new places, increasing before and after school places through the national wraparound programme and Phase 1 of School Based Nurseries. We will continue to provide support to the sector with these initiatives and monitor the places created and the take up of provision.

