

EAST LANCASHIRE

Executive Summary of the Full Business Case

Creating Opportunities through Safer,
Greener, and Healthier Travel



Executive summary of the Full Business Case for Levelling Up East Lancashire

Creating opportunities through safer, greener, and healthier travel

Introduction

This document provides a summary of Lancashire County Council's (LCC) Levelling Up East Lancashire programme.

The Levelling Up East Lancashire programme is primarily funded through a grant application of £49.6m from the Department for Transport's (DfT) Levelling Up Fund (LUF). The programme has been developed over several years in collaboration with key stakeholders and local communities and comprises public transport, active travel and improvements to public/green spaces across the four districts of East Lancashire: Burnley, Hyndburn, Pendle and Rossendale.

Setting the Scene

The Levelling Up Fund was designed to invest in infrastructure that improves everyday life across the UK and support town centre and high street regeneration, local transport projects, and cultural and heritage assets. Over 100 projects, including several from Lancashire, received part of the £2.1 billion fund.

East Lancashire's Levelling Up programme will receive £5 million from Lancashire County Council and was awarded £49.6 million by the government in 2023.

The Levelling Up East Lancashire programme will deliver a range of improvements through three connected projects:

- ➔ **Safer, Greener and Healthier Streets (SGHS)** will deliver improvements to local streets which aim to make travel easier between homes, jobs, shops and services, and help make streets safer and more accessible for everyone.
- ➔ **Public Transport Improvements** will improve journeys and everyday life for people in East Lancashire and across the rest of the county by making it easier to access work, education, shops, services and green spaces.
- ➔ **Accessible and Vibrant Town Centres (AVTC)** will improve experiences in town centres for local communities and visitors to make them more accessible, attractive and support our local economies.



Image 1: This image provides an illustration of some potential Safer Greener Healthier Street project improvements for Woodnook, Hyndburn

Why East Lancashire?

East Lancashire faces significant challenges which include:

- ➔ Poor access to employment, education and training.
- ➔ Health inequalities.
- ➔ Poor quality public transport facilities, public spaces and parks.
- ➔ High carbon emissions and air quality issues.

When developing Lancashire's bid for funding, LCC assessed lots of data to identify areas that would benefit from the Levelling Up Fund, including levels of employment, health, air quality, car ownership, road accidents, walking and cycling, and bus and rail services. It was determined that Burnley, Hyndburn, Pendle and Rossendale would benefit the most and had the highest potential to meet the criteria of the fund.

LCC carried out significant engagement with stakeholders and residents between October 2023 and Aug 2024. The feedback helped to understanding how local communities feel the proposed interventions should be prioritised and where they could make the most impact.

The improvements planned through the three connected projects aim to provide:

- ➔ faster and more reliable bus journeys.
- ➔ safer and more accessible streets.
- ➔ access to better jobs, pay, and living standards.
- ➔ more attractive & busy town centres.
- ➔ enhanced public and green spaces to spend time in.



Image 2: This image provides an illustration of some potential AVTC improvements for Bank Street, Rawtenstall

LCC have also worked closely with local communities and stakeholders to produce and refine project designs so that the three connected projects can:

- ➔ Overcome existing and future challenges facing East Lancashire.
- ➔ Meet the needs of stakeholders and local communities and businesses.
- ➔ Contribute towards achievement of national, regional and local ambitions.
- ➔ Integrate with wider proposals to bring about transformational change across East Lancashire.
- ➔ Help to reduce inequality and support decarbonisation.

Programme Objectives

The East Lancashire LUF Programme's objectives are based on local needs, as well as local and national policies.

Objective 1: Increase active travel uptake to improve health and wellbeing and reduce health inequalities.

Objective 2: Increase footfall in town centres and local neighbourhoods to support business growth and investment.

Objective 3: Improve access to work, education, leisure and services by faster, more reliable and more accessible public transport.

Objective 4: Foster a sense of pride in local communities by creating safer, greener neighbourhoods and revitalised public realm.

Objective 5: Support the government's decarbonisation goals by increasing uptake of sustainable transport.

Project Locations

After considering 600 potential transport projects county-wide, LCC selected themed interventions in the East Lancashire districts of Burnley, Hyndburn, Pendle and Rossendale.

The locations for each of the projects are listed.

Safer, Greener, Healthier Streets projects will be delivered in seven areas across four districts:

- ➔ In Burnley in the Colne Road area.
- ➔ In Hyndburn in two areas, Countess Street and Woodnook.
- ➔ In Rossendale in Hall Carr, Rawtenstall.
- ➔ In Pendle in Brierfield, Cone and Nelson.

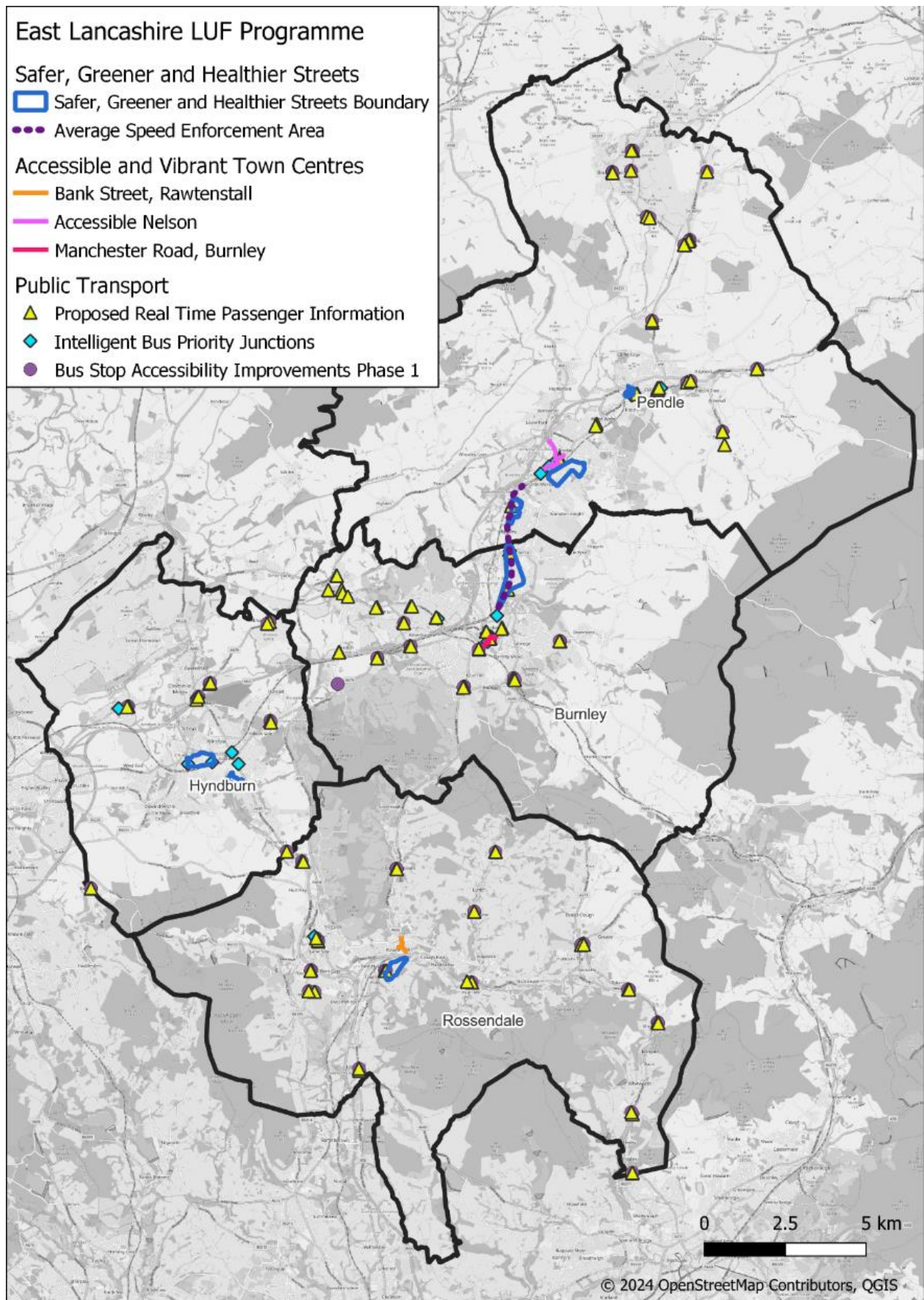
Accessible and Vibrant Town Centre projects will deliver improvements in three areas:

- ➔ on Manchester Road in Burnley town centre.
- ➔ on Bank Street in Rawtenstall town centre in Rossendale.
- ➔ in Nelson town centre in Pendle.

Public transport improvements will be delivered at multiple locations across East Lancashire, including:

- ➔ Real time displays installed at more than 100 bus stops.
- ➔ Accessibility improvements at around 180 bus stops.

Image 3: Levelling Up East Lancashire project locations



Programme benefits

The programme is anticipated to deliver substantial benefits for communities across East Lancashire.

The Safer Greener Healthier Streets projects will:

- ➔ Improve local streets with better connections through new or improved crossing facilities and pathways.
- ➔ Enhance streets and public spaces with new planting and seating.
- ➔ Create safer street environments that makes it easier for people to walk, cycle or wheel to local places.
- ➔ Improve facilities at local parks and provide new public green spaces.
- ➔ Improve road safety by discouraging pavement parking at junctions, improving sight lines for people trying to cross the road and reducing traffic speeds.

The Public Transport improvements projects will:

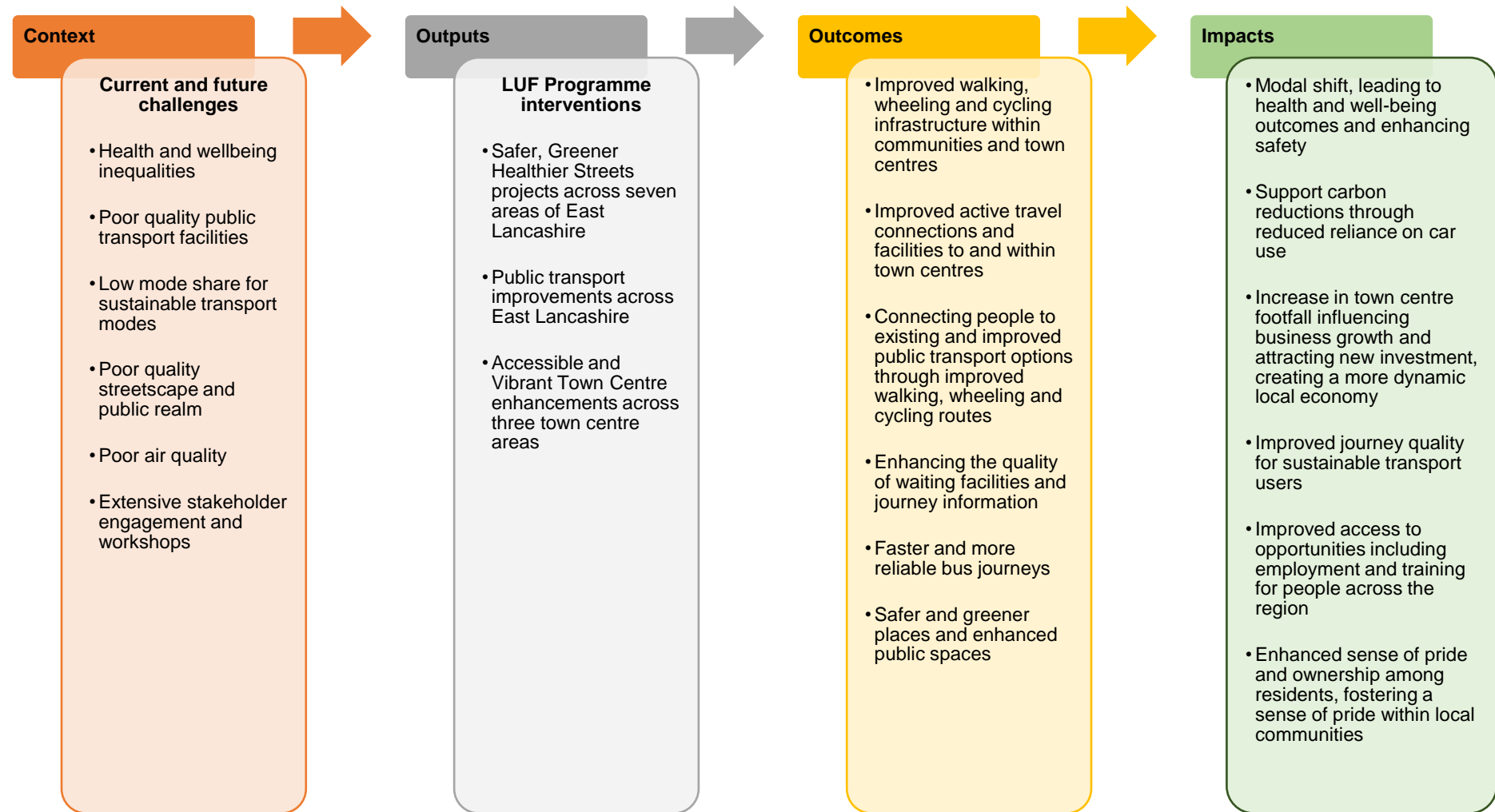
- ➔ Provide real time passenger information to help plan journeys and stay informed.
- ➔ Upgrade traffic signal technology to improve bus journey times.
- ➔ Improve accessibility at bus stops, making it easier for people to get on and off, and improving journey times and reliability.

The Accessible and Vibrant Town Centre projects will:

- ➔ Make it safer and easier to walk and wheel around town centres through with better crossing facilities and wider pavements.
- ➔ Improve street environments and public spaces with new paving and surfaces, planting and seating.
- ➔ Refresh and modernise town centre spaces to promote outdoor dining and support local businesses.
- ➔ Improve routes and crossings to make it easier and safer for people to cycle.

Figure 1. provides a summary of the LUF programme outcomes and impacts.

Figure1: Summary of LUF programme outcomes and impacts



Economic, Environmental and Social Impacts

The economic, environmental and social impacts of the programme have been assessed and the results identified the following benefits:

- ➔ Increase in Footfall (additional 600k trips per year).
- ➔ Increase Employment (420 new jobs created).
- ➔ Increase Property Value Appreciation.
- ➔ Improved Business Occupancy (£3.5m of additional economic activity).

The overall wellbeing impact on the population in the area has been assessed, with wellbeing benefits provided by the programme estimated to be worth £8.8m. Appraisals for the programme have been carried out to assess the impact of projects, including impacts associated with noise, air quality, greenhouse gases, landscape, biodiversity, water environment, historic environment, as well as the expected social and transport benefits.

How will the programme be delivered

LCC has invested extensively in a procurement strategy to select suppliers to deliver the programme of works to ensure public funding is used wisely.

LCC has worked closely with contractors to understand their suitability, availability, capabilities, and the market, ensuring the programme of works is commercially viable. Supplier engagement events and pre-tender activities, like questionnaires and interviews, have shaped the tender specifications. This approach reduces commercial risks and helps to ensure the programme stays within budget and is completed in time by 2026.

In addition to ensuring commercial viability, LCC's procurement strategy and contractor management focus on delivering social value and sustainability in East Lancashire. These priorities are embedded in the quality criteria of the tendering process. This ensures that projects not only meet economic goals but also contribute positively to the community and environment. This approach maximises the benefits of the investments, fostering long-term sustainability and social impact.

How the programme will be managed

LCC will ensure the programme is delivered successfully by identifying clear leadership roles and responsibilities, with suitable scrutiny and risk management processes in place. Programme governance, assurance processes and reporting mechanisms set out the high-level phasing for each project, and how progress and success will be managed and measured.

LCC has collaborated with key stakeholders to ensure the programme is communicated well, to gain local community support, and meet the delivery target date in 2026.

Stakeholders engaged include:

- ➔ MPs (both pre and post July 2024 general elections)
- ➔ County and district councillors
- ➔ District officers
- ➔ East Lancashire communities and businesses
- ➔ Active Travel England (ATE)

A comprehensive Communications and Stakeholder Management Plan has been developed by LCC. This identifies key stakeholders and the best methods and approaches for engagement. It will help to keep key stakeholders, including the public, informed of progress on the programme and help to minimise disruption during construction.

The programme includes monitoring and evaluation both during and after delivery, which will demonstrate the benefits of the investment and enable lessons to be learnt to be identified and applied in future projects.

Further information about Lancashire County Council's Levelling Up East Lancashire programme is available online at lancashire.gov.uk/EastLancsLUF

EAST LANCASHIRE

Creating opportunities
through safer, greener,
and healthier travel.

lancashire.gov.uk/EastLancsLUF

