

VIEWPOINT PM24 - View from Ellet FP31 and Long Distance Path
Historical Walks through Lancashire and Yorkshire.

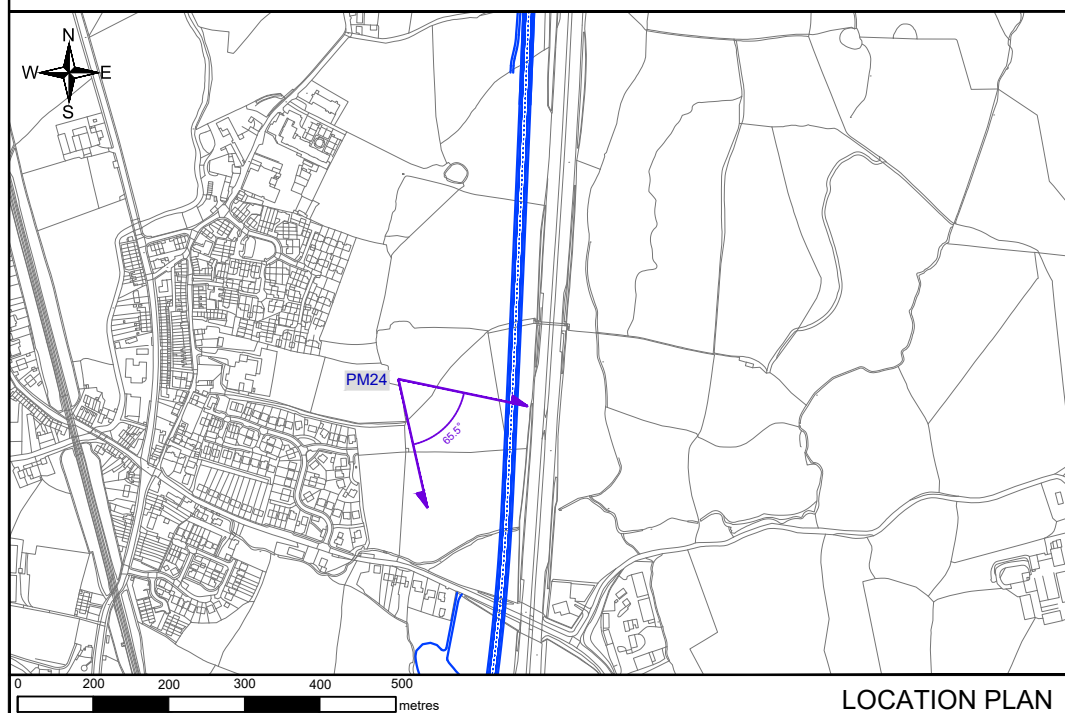
VIEWPOINT DATA

- OS grid reference: 348701, 455479
- Viewpoint ground elevation: 40.3m AOD
- Camera height above ground level: 1.6m
- Camera type: Canon EOS 5D MARK II
- Camera lens size: 50mm
- Aperture: f/8
- Shutter speed: 1/2000
- ISO rating: 200
- Field of View: Horizontal (28mm): 65.5°, Vertical (50mm): 27°
- Date of photograph: 14/03/2022
- Time of photograph: 12:50
- Lighting conditions: Clear

Important Notes:

- 1) The images contained on this sheet are not representative of scale and distance from the actual viewpoint and show the development in its wider landscape context only.
- 2) Photomontages on sheet 2 & 4 are for landscape assessment purposes only.
- 3) Scheme proposals based on approved 3D & 2D design information supplied by Lancashire County Council for the consultation stage.
- 4) If viewing these figures online, images will be low-resolution and therefore should only be used for information purposes. Printing guidelines: High quality colour printer with margins set to 3mm to top and bottom of A3 paper.

[illegible]



VIEWPOINT PM24 - View from Ellet FP31 and Long Distance Path
Historical Walks through Lancashire and Yorkshire.

VIEWPOINT DATA

- OS grid reference: 348701, 455479
- Viewpoint ground elevation: 40.3m AOD
- Camera height above ground level: 1.6m
- Camera type: Canon EOS 5D MARK II
- Camera lens size: 50mm
- Aperture: f/8
- Shutter speed: 1/2000
- ISO rating: 200
- Field of View: Horizontal (28mm): 65.5°, Vertical (50mm): 27°
- Date of photograph: 14/03/2022
- Time of photograph: 12:50
- Lighting conditions: Clear

Important Notes:

- 1) The images contained on this sheet are not representative of scale and distance from the actual viewpoint and show the development in its wider landscape context only.
- 2) Photomontages on sheet 2 & 4 are for landscape assessment purposes only.
- 3) Scheme proposals based on approved 3D & 2D design information supplied by Lancashire County Council for the consultation stage.
- 4) If viewing these figures online, images will be low-resolution and therefore should only be used for information purposes. Printing guidelines: High quality colour printer with margins set to 3mm to top and bottom of A3 paper.

O	JP	RL	HP	FINAL ISSUE FOR CONSULTATION	MAR 2023
VERSION	AUTH	CHKD	REVD	REASON FOR ISSUE	DATE

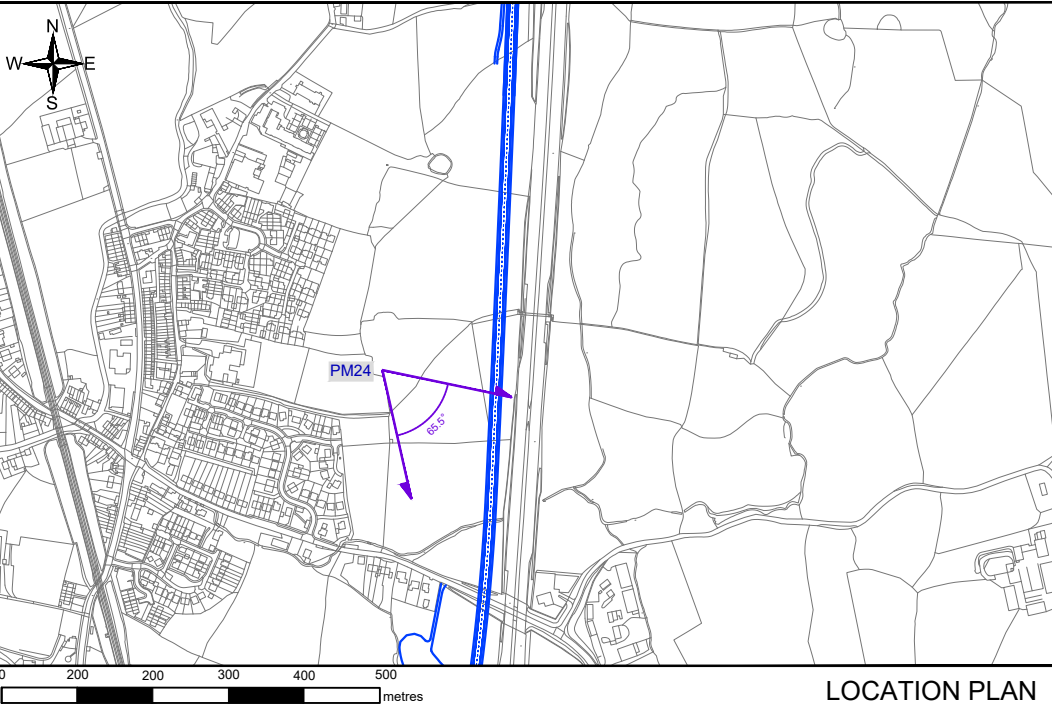
The logo features the word "Lancashire" in a large, bold, black sans-serif font. Below it, "County Council" is written in a smaller, regular weight of the same font. To the right of the text is a red stylized rose emblem.

SOUTH LANCASTER TO M6 ROAD SCHEME

VIEWPOINT PM24 - SHEET 2 of 4

PHOTOMONTAGE - WINTER IN OPERATION YEAR 1

SCALE N/A	SHEET SIZE A3
DRAWING NUMBER R2327FFK-1 S-PM24_02	REVISION 0



VIEWPOINT PM24 - View from Ellel FP31 and Long Distance Path
Historical Walks through Lancashire and Yorkshire.


VIEWPOINT DATA

- OS grid reference: 348702, 455486
- Viewpoint ground elevation: 40m AOD
- Camera height above ground level: 1.6m
- Camera type: Canon EOS 5D MARK II
- Camera lens size: 50mm
- Aperture: f/10
- Shutter speed: 1/200
- ISO rating: 200
- Field of View: Horizontal (28mm): 65.5°, Vertical (50mm): 27°
- Date of photograph: 15/09/2022
- Time of photograph: 12:27
- Lighting conditions: Clear

Important Notes:

- 1) The images contained on this sheet are not representative of scale and distance from the actual viewpoint and show the development in its wider landscape context only.
- 2) Photomontages on sheet 2 & 4 are for landscape assessment purposes only.
- 3) Scheme proposals based on approved 3D & 2D design information supplied by Lancashire County Council for the consultation stage.
- 4) If viewing these figures online, images will be low-resolution and therefore should only be used for information purposes. Printing guidelines: High quality colour printer with margins set to 3mm to top and bottom of A3 paper.

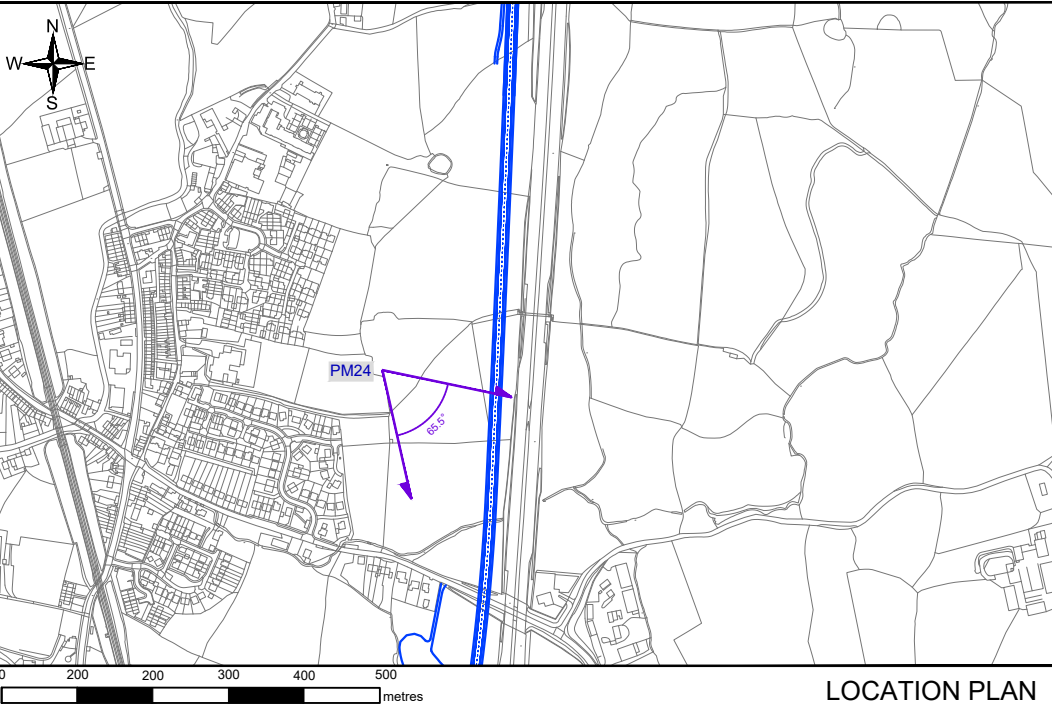
0	JP	RL	HP	FINAL ISSUE FOR CONSULTATION	MAR 2023
VERSION	AUTH	CHKD	REVD	REASON FOR ISSUE	DATE



SOUTH LANCASTER TO M6 ROAD SCHEME

VIEWPOINT PM24 - SHEET 3 of 4
EXISTING VIEW - SUMMER 2022

SCALE N/A	SHEET SIZE A3
DRAWING NUMBER B2327FEK-LS-PM24_03	REVISION 0




VIEWPOINT PM24 - View from Ellel FP31 and Long Distance Path
Historical Walks through Lancashire and Yorkshire.

VIEWPOINT DATA

- OS grid reference: 348702, 455486
- Viewpoint ground elevation: 40m AOD
- Camera height above ground level: 1.6m
- Camera type: Canon EOS 5D MARK II
- Camera lens size: 50mm
- Aperture: f/10
- Shutter speed: 1/200
- ISO rating: 200
- Field of View: Horizontal (28mm): 65.5°, Vertical (50mm): 27°
- Date of photograph: 15/09/2022
- Time of photograph: 12:27
- Lighting conditions: Clear

Important Notes:

- 1) The images contained on this sheet are not representative of scale and distance from the actual viewpoint and show the development in its wider landscape context only.
- 2) Photomontages on sheet 2 & 4 are for landscape assessment purposes only.
- 3) Scheme proposals based on approved 3D & 2D design information supplied by Lancashire County Council for the consultation stage.
- 4) If viewing these figures online, images will be low-resolution and therefore should only be used for information purposes. Printing guidelines: High quality colour printer with margins set to 3mm to top and bottom of A3 paper.

0	JP	RL	HP	FINAL ISSUE FOR CONSULTATION		MAR 2023
VERSION	AUTH	CHKD	REVD	REASON FOR ISSUE		DATE
<div><div>Lancashire</div><div>County Council</div><div></div></div>						
SOUTH LANCASTER TO M6 ROAD SCHEME						
VIEWPOINT PM24 - SHEET 4 of 4						
PHOTOMONTAGE - SUMMER IN OPERATION YEAR 15						
SCALE N/A					SHEET SIZE A3	
DRAWING NUMBER B2327FEK-LS-PM24_04					REVISION 0	