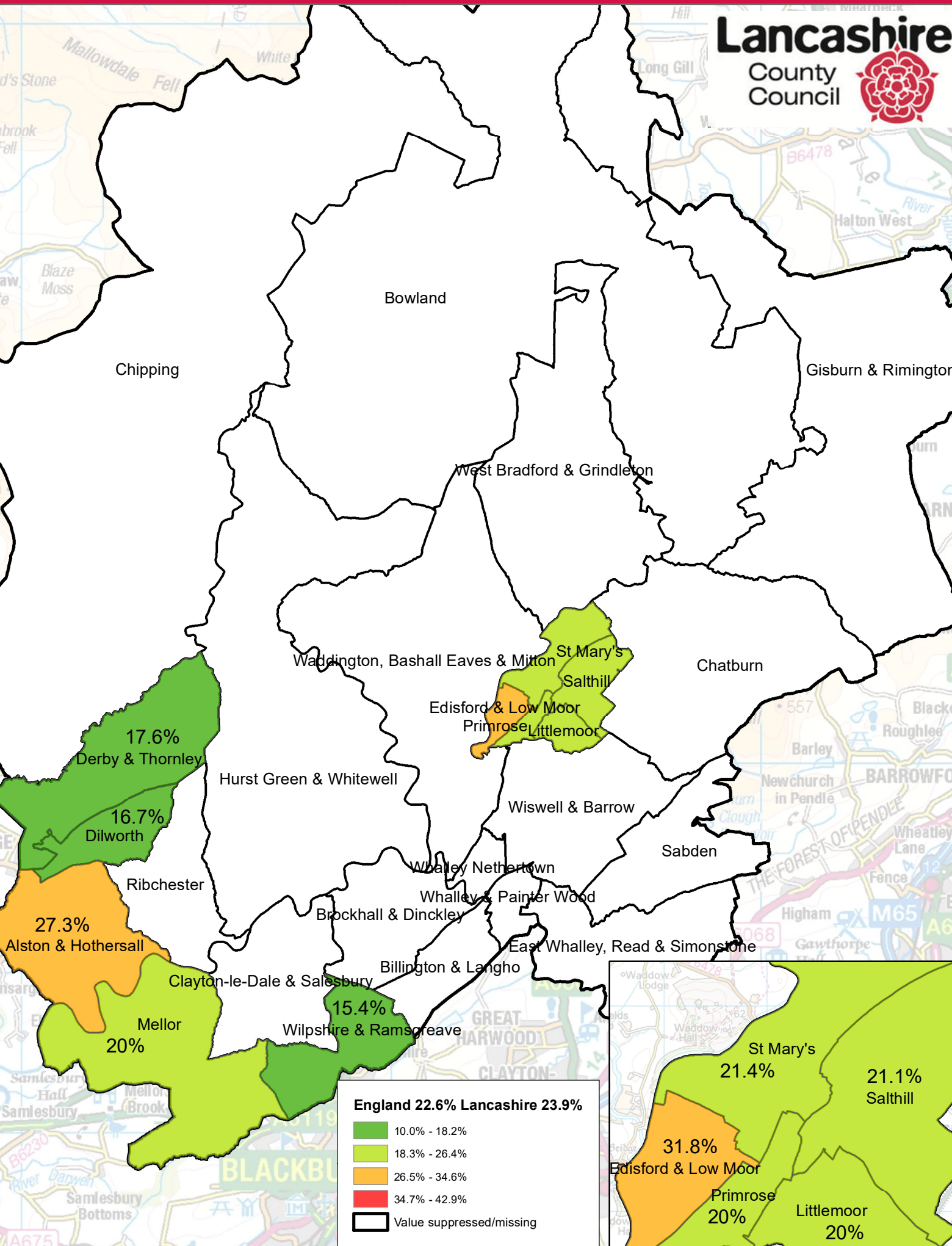


Ribble Valley - proportion of reception children overweight or obese by ward (2019/20 - 2021/22)



This map is reproduced from Ordnance Survey material with the permission of Ordnance Survey on behalf of the controller of His Majesty's Stationery Office (C) Crown Copyright. Unauthorised reproduction infringes Crown Copyright and may lead to prosecution or civil proceedings. Lancashire County Council licence: 100023320.