

# MINIBEASTS 2



**wasp**



**slug**



**earwig**



**centipede**



**moth**



**bumblebee**



**dragonfly**



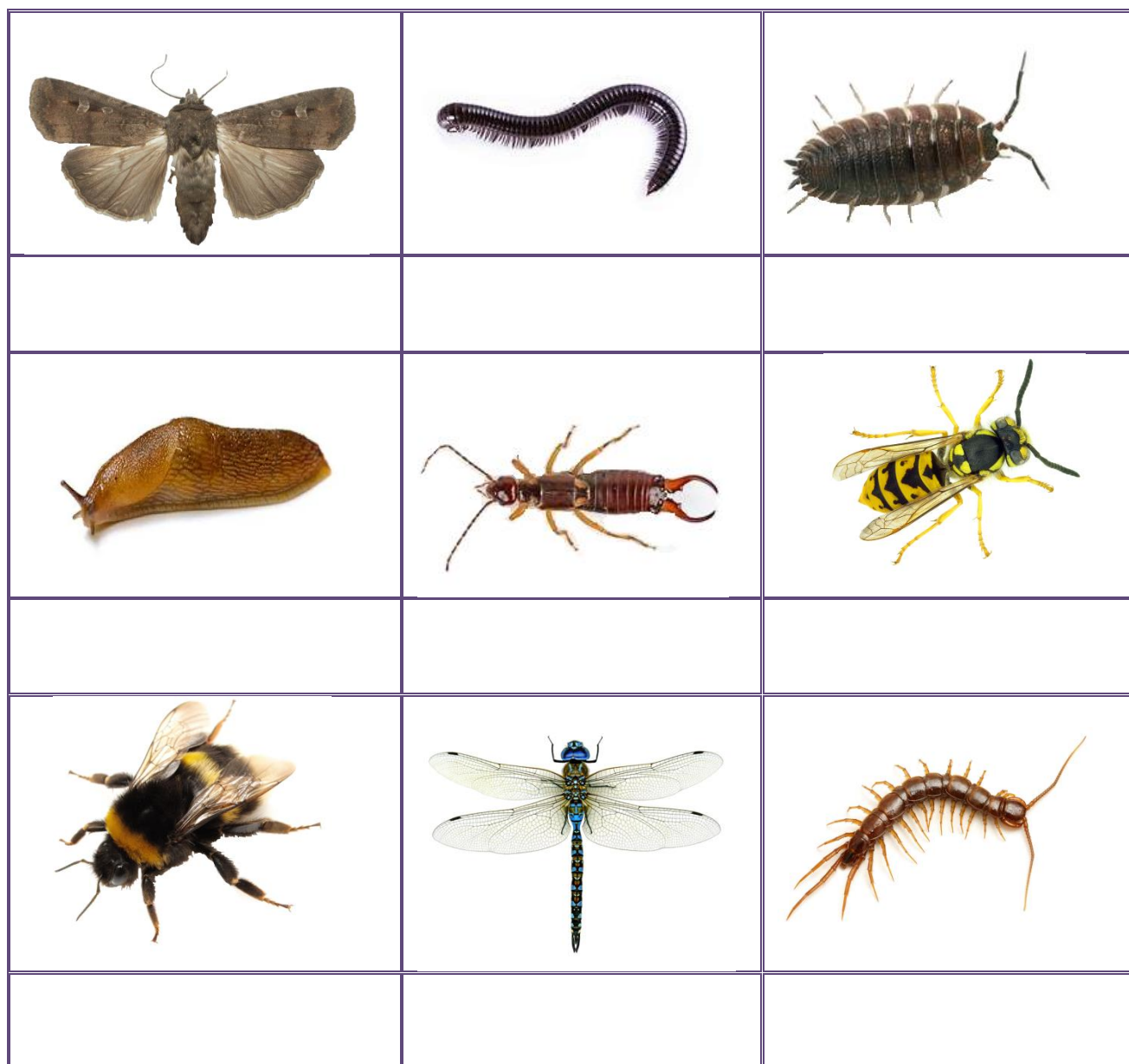
**millipede**



**woodlouse**






1. Please cut out the names of the minibeasts from the box bellow and stick them under the correct picture.



earwig	bumblebee	slug
woodlouse	centipede	dragonfly
millipede	moth	wasp

2. Please read the information about the minibeasts and fill in the chart.

 <p><b>Common Earwig</b></p>	<p>The Common earwig is brown with 6 yellowish brown legs, 2 antennae, and 2 pincers at the tail end. It has wings folded underneath the wing cases but it rarely flies. It lives under stones, flower pots, logs or loose bark on trees. It eats leaves and petals of plants and other minibeasts and grows up to 16 mm long.</p>
 <p><b>Common Centipede</b></p>	<p>The Common Centipede is brownish red in colour with long antennae at the front and 15 pairs of legs. It is thin and grows to about 30 mm long. It can be found in gardens and woodlands hiding underneath logs and stones to keep cool. It injects poisonous venom into its prey and usually eats smaller minibeasts.</p>
 <p><b>Common Wasp</b></p>	<p>The Common Wasp has a black and yellow body, six yellow legs, two pairs of wings and two black antennae. It grows up to 19 mm long. It has a sting and lives in colonies. It eats flies, aphids, caterpillars and other minibeasts.</p>

✓ or ✗

	Common Earwig	Common Centipede	Common Wasp
It has more than 6 legs			
It has wings			
It is brown			
It has antennae			



It eats other minibeasts			
Its body is longer than 20 mm			

3. Please fill in the gaps with the correct words from the box below.

1. A common wasp.....up to 19 mm long.
2. It has a .....and yellow body and six yellow legs.
3. A common centipede has 15 .....of legs.
4. It can be found in ..... and woodlands.
5. A common earwig has two..... at the tail end.
6. It has wings but ..... flies.

black	rarely	gardens	grows	pincers	pairs
-------	--------	---------	-------	---------	-------

4. Find the words in the wordsearch



# Minibeasts

O	L	E	P	Y	R	M	E	E	I	I	G	W	I
S	E	N	S	T	O	M	D	O	L	R	I	E	M
T	E	S	L	C	I	O	E	T	S	T	W	W	D
P	N	R	U	N	G	T	P	I	Y	P	R	E	D
S	L	A	G	W	E	H	I	O	L	L	A	D	R
A	A	T	O	T	I	E	T	F	F	W	E	E	I
P	E	R	W	A	S	P	N	G	D	F	R	P	B
A	M	P	N	F	I	R	E	C	L	N	S	I	Y
E	R	O	R	U	M	G	C	E	E	E	P	L	D
E	C	I	L	D	O	O	W	L	D	U	I	L	A
L	E	N	T	I	D	C	W	B	E	E	D	I	L
T	R	A	N	I	T	L	E	L	R	E	E	M	I
C	A	T	E	R	P	I	L	L	A	R	R	S	I
U	I	D	L	I	A	N	S	R	D	O	C	I	A

WOODLICE  
EARWIG  
BEE  
ANT  
MILLIPEDE  
MOTH  
LADYBIRD  
FLY  
WORM  
CATERPILLAR  
SLUG  
SNAIL  
WASP  
CENTIPEDE  
SPIDER

Play this puzzle online at : <https://thewordsearch.com/puzzle/1238049/>

5. Name the pictures. The number under the picture shows which letter you need to write in the grid to get the answer and reveal the name of a minibeast.



4

spider



3

.....



2

.....



4

.....



2

.....



2



1



5



4

.....

d								
---	--	--	--	--	--	--	--	--

Please draw a picture of it.

### Answers

✓ or X

	Common Earwig	Common Centipede	Common Wasp
It has more than 6 legs	x	✓	x
It has wings	✓	x	✓
It is brown	✓	✓	x
It has antennae	✓	✓	✓
It eats other minibeasts	✓	✓	✓
Its body is longer than 20 mm	x	✓	x

1. A common wasp **grows** up to 19 mm long.
2. It has a **black** and yellow body and six yellow legs.



3. A common centipede has 15 **pairs** of legs.
4. It can be found in **gardens** and woodlands.
5. A common earwig has two **pincers** at the tail end.
6. It has wings but **rarely** flies.



4 spider



3 earwig



2 wasp



4 slug



2 moth



2 ant



1 fly



5 snail



4 ladybird

d	r	a	g	o	n	f	l	y
---	---	---	---	---	---	---	---	---