

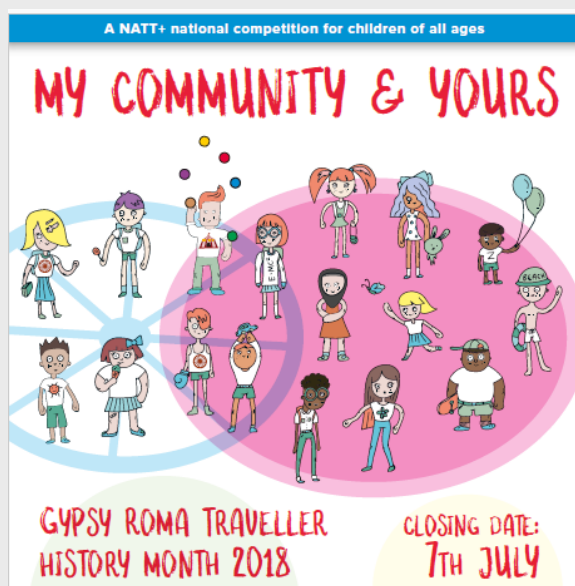
# Lancashire Ethnic Minority and Gypsy, Roma and Traveller Achievement Service Newsletter

EYFS new arrivals| Gypsy Roma Traveller History Month  
Myths about Prevent | EAL Network Meetings | 2018-19 Course Programme

**May 2018**

## EAL ADVICE AND AUDITING VISITS — FREE TO LANCASHIRE SCHOOLS

Did you know all Lancashire schools are entitled to a **free** visit when an international new arrival starts at their school? This visit provides advice on strategies and resources for teaching EAL students and signposts to other resources and tutoring and training that may be helpful. This visit could also look at **auditing** your whole school provision for EAL and next steps to develop your school's practice further. Please refer your pupils on the schools' portal under E for EAL.



## June is Gypsy Roma Traveller History Month

### My Community and Yours Competition

To celebrate, there is a competition, My Community and Yours. It celebrates different communities, cultures and backgrounds. Pupils and students create a piece of work that considers groups in your community and what these groups have in common with Traveller communities – how are they similar with regards to culture, religion, food, interests or lifestyle activities and heritage?

The piece of work should be titled "My Community and Yours", and can be artwork, a poem or a piece of writing, and should be no larger than A3.

For further information, and to download entry forms, please visit:

[www.natt.org.uk/my-community-and-yours/](http://www.natt.org.uk/my-community-and-yours/)

For further advice and guidance please contact:-

- Central, South, Fylde & Wyre – Seb Smith 07795044636
- North Lancashire – Eileen Mullervy 07919227479
- East Lancashire -- Sam Hoban 07812632166

### Contact Us

#### Website

[www.lancsngfl.ac.uk/projects/ema](http://www.lancsngfl.ac.uk/projects/ema)

### Telephone

01772 532429

Email [ema.support@lancashire.gov.uk](mailto:ema.support@lancashire.gov.uk)

The *Times Educational Supplement*, sponsored by Department for Education, has published an article dispelling the

## Myths about Prevent.

Prevent is a key strand of the government's counter-terrorism strategy. Its aim is to identify and support people at risk of joining extremist groups and carrying out terrorist activities. Since the introduction of Prevent, many myths have sprung up about it. Here, eight of the most common are outlined and addressed.

### Myth 1: The Prevent duty puts a greater burden on teachers

**Reality:** Schools have always sought to protect children from a wide range of risks and [protecting them from the threats of extremism](#) is no different from other safeguarding duties.

### Myth 2: The Prevent duty requires teachers to spy on pupils and stunts debate

**Reality:** Prevent is not about spying, but is about identifying concerning behaviour and knowing how to appropriately [refer pupils who are at risk of radicalisation](#) so they can get the right support.

### Myth 3: Schools are not confident in implementing the Prevent duty

**Reality:** Surveys carried out by the National Foundation for Educational Research found that 83 per cent of school leaders were either very confident or fairly confident in implementing their Prevent duty.

### Myth 4: There is no support available for schools to implement the Prevent duty

**Reality:** The Educate Against Hate [website](#) features a wide range of information, material and practical advice for teachers and school leaders.

### Myth 5: The Prevent duty leads to schools overreacting

**Reality:** Teachers and school leaders are trusted to [exercise their judgement](#) about whether to refer a student to the appropriate services, in the same way as they are for other safeguarding issues, such as physical or sexual abuse.

### Myth 6: The Prevent duty means teachers must report concerns about radicalisation to the police and are committing an offence if they don't

**Reality:** [There are no mandatory reporting requirements](#). Teachers should follow normal safeguarding procedures and act appropriately if they have concerns

### Myth 7: The Prevent duty stunts freedom of speech in colleges because students are afraid of expressing their beliefs.

**Reality:** Prevent promotes debate and encourages students to think critically about different views. [Educate Against Hate website](#) offers resources specifically designed to help teachers encourage and manage debates.

**Myth 8:** Prevent is unnecessary. Teaching professionals already have a duty to safeguard and this is more than sufficient to tackle concerns around radicalisation.

**Reality:** Although teachers have always had safeguarding responsibilities, Prevent has raised awareness and understanding of [radicalisation as a safeguarding risk](#).

For the full article, follow this link

<https://www.tes.com/sponsored/dfc-standalone/eight-myths-about-prevent-sponsored-article>

# *The Prevent* Duty in Education Conference

**Thursday 5 July 18**

9am–4pm - £25 per delegate (incl lunch) Dunkenhall Hotel

An essential conference for Heads, DSLs & Prevent Leads giving you the latest information and practical advice to successfully implement & embed the Prevent Duty in your institution.

**To book your place please use the following link**

<https://bit.ly/2J1xfhx>

For further information, please contact:

Janet Crossley, Prevent Education Officer (primary & secondary) [jcrossley@burnley.gov.uk](mailto:jcrossley@burnley.gov.uk)

## CONTACTS FOR PREVENT CONCERNS

There are two teams of locally based Prevent Officers covering the whole of Lancashire who work with communities and our partners. They can be contacted using the following details:

**East Division:** (Blackburn, Burnley, Hyndburn, Ribble Valley, Pendle & Rossendale)

**Telephone: 01254 353541/ 91**

Sgt Katherine McIntyre: [Kathryn.McIntyre@lancashire.pnn.police.uk](mailto:Kathryn.McIntyre@lancashire.pnn.police.uk)

**West & South Division:** (Preston, Lancaster, Skelmersdale, Blackpool etc.)

**Telephone: 01772 209733 / 830**

Sgt James Neale: [James.Neale@lancashire.pnn.police.uk](mailto:James.Neale@lancashire.pnn.police.uk)

**This Safeguarding Team of the Counter Terrorism Branch (CTB) : 01772 413029**

Team led by D/Sgt 1436 Maxine Monks / Email: [concern@lancashire.pnn.police.uk](mailto:concern@lancashire.pnn.police.uk)

Please contact any of the above if you have a concern, are unsure whether you need to make a Channel referral or want to discuss an open case. We are happy to help, discuss and guide you. Remember it's got to be a Prevent/Channel concern i.e. there is a worry around radicalisation or extremism or potential for the same.

If out of hours and you have a concern that you feel needs **urgent action** then please consider the telephone numbers below and ask that Counter Terrorism Branch are informed.

Police Emergency 999 / Police non-emergency 101 / Anti-Terrorism Hotline 0800 789 321

**Remember, it's just safeguarding ...**

**And all referrals will be dealt with sensitively and proportionately.**

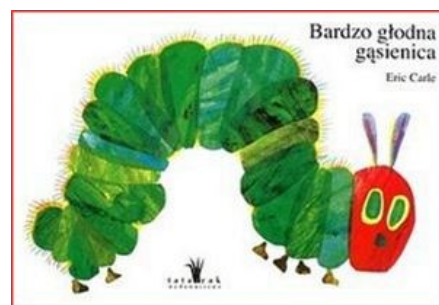
## Hints and tips for International New Arrivals in EYFS



New Arrivals in the Autumn term in nursery and reception classes usually require a high level of support in the first few weeks. We thought it would be useful to include some advice for EYFS practitioners as we get lots of requests for support and advice from this group. EYFS practice is already centred around language development for all pupils so much of the general practice already supports EAL pupils.

Additional strategies to consider are:

- ⇒ Make it visual – this simple tip helps to activate the pupil's prior knowledge.
- ⇒ Cut down on language - for children with very little English, consider not speaking in full sentences and instead using one or two word utterances, moving to simple sentences as appropriate.
- ⇒ Communicate by other means – remember the power of communicating through facial expression, gesture and play
- ⇒ Bilingual support – give the child opportunities to hear their home language. Use bilingual talking books or even have a go at a couple of words yourself.
- ⇒ Show the child pre-school routines with simple accompanying language – for example, greeting, name of helpers, toilet and drinks.
- ⇒ Don't insist they speak too early – a silent stage for up to 6 months can be normal. At this time the child will be taking in lots of language.
- ⇒ Concentrate in first half term on making them feel at home and give them an understanding of the routine.



As with any child in EYFS, it can be hard to make definite judgements about abilities in the first 6 weeks. In fact, EAL pupils may need an extra amount of 'settling in' time due to the possible language and cultural differences. After this first half term of settling in, if you are in need of advice, please refer the pupils to us by using the referral form on the schools' portal.

### GOOD NEWS

#### Funding for EAL pupils has increased

Funding for EAL pupils is allocated into school budgets, for pupils for the first three years after their international new arrival.

The money allocated per pupil for 2018 - 2019 is:

- £515 for primary schools, and
- £1385 for secondary schools.

This money is triggered by the pupil/ student data submitted in the Autumn census.

## ENGLISH AS AN ADDITIONAL LANGUAGE NETWORKS FOR SCHOOLS

We hold termly cluster meetings for EAL co-ordinators that provide guidance on good practice, give policy updates and serve as an opportunity to raise concerns, seek advice and network with other EAL staff. These are free of charge to Lancashire maintained schools. Otherwise the cost is £50.

Meetings run from 2.30-4.15pm.

**Termly focus: Sharing good practice for EAL provision.**

To book a place: <https://lccsecure.lancashire.gov.uk/corporate/questionnaires/runQuestionnaire.asp?qid=744880>

Primary & Secondary Central	Moor Park High, Preston, PR1 6DT	Monday, 18 June 2018
Primary & Secondary North	Bowerham Primary, Lancaster, LA1 4BS	Tuesday, 19 June 2018
Primary & Secondary East	Mount Carmel RC High , Accrington, BB5 0LU	Wednesday, 20 June 2018
Primary & Secondary East	Pendle Vale High , Nelson, BB9 8LF	Thursday, 21 June 2018

## WINDRUSH 70



This year is the 70th anniversary for the arrival of the SS Empire Windrush carrying passengers invited to Britain from the Caribbean to assist with post-war reconstruction. To find educational resources about this pioneering generation, visit the national archives website or visit:

<https://www.teachingenglish.org.uk/article/windrush-generation>

## WINDRUSH 70 FESTIVAL

**Sunday 24th June at Vernon Carus, Factory Lane Penwortham, PR1 9SN, 12 –8pm**

To find out more, find Windrush 70 on Facebook. Please share details.

## Advice and Guidance to Schools with Gypsy Roma Traveller Pupils and Students

Lancashire EMGRT offers advice, support and training to primary, secondary and nursery schools:

- Direct support to GRT pupils to help narrow the attainment gap and encourage school attendance
- Cultural awareness sessions on Gypsy Roma Traveller communities
- Best Practice Strategies for welcoming GRT children and families into school
- Development of strategies and resources for GRT children and young people

If you have any concerns about a GRT pupil or would like advice, please contact us:

**Telephone**  
**01772 532429**

**Email**  
[ema.support@lancashire.gov.uk](mailto:ema.support@lancashire.gov.uk)

## ETHNIC MINORITY ACHIEVEMENT TRAINING FOR SCHOOLS

We run a program of courses for school staff in conjunction with LDPS. There are courses for all key stages and staff groups. Please click on the links below to book. The great majority of participants on our courses rate our courses as 5 out of 6 or above

To book on these courses go to:

<https://lccsecure.lancashire.gov.uk/lpds/courses.asp?subject=EAL>

## 2018/2019 EAL Course Programme

Course link	Date
<a href="#">Teaching and learning strategies for all EAL Learners</a>	16 May 2018
<a href="#">A whole school approach to vocabulary development</a>	22 May 2018
<a href="#">Professional development for Polish speaking Teaching Assistants</a>	12 June 2018
<a href="#">Assessing the Language Proficiency of EAL Learners and the 'EAL or SEN? Language barrier or learning need?' Toolkit – Part 1</a>	19 October 2018 am
<a href="#">Assessing the Language Proficiency of EAL Learners and the 'EAL or SEN? Language barrier or learning need?' Toolkit – Part 2</a>	19 October 2018 pm
<a href="#">How to integrate and Teach New Arrivals, Targeting EAL Pupils codes A and B</a>	4 October 2018
<a href="#">Teaching Assistants and EAL: Effectively supporting EAL learners</a>	1 November 2018
<a href="#">Supporting EAL Children in Pre-school settings and reception classes</a>	24 January 2019
<a href="#">Developing Language for EAL Students Across all Subjects</a>	30 January 2019
<a href="#">Develop Language for Learning, Targeting EAL Pupils Codes C and D</a>	1 May 2019

### Contact Us

Ethnic Minority and Gypsy, Roma and Traveller Achievement  
County Hall, Preston PR1 0LD

### Website

[www.lancsngfl.ac.uk/projects/ema](http://www.lancsngfl.ac.uk/projects/ema)

### Telephone

01772 532429

### Email

[ema.support@lancashire.gov.uk](mailto:ema.support@lancashire.gov.uk)