

# Lancashire Ethnic Minority and Gypsy, Roma and Traveller Achievement Service Newsletter

National Tuition Programme | GRT 'Our Voice' | Equalities in the Early Years  
Equality Guidance and Support | School Linking Update | Prevent Update

**Spring 2021**

## National Tuition Programme— English as an Additional Language Tuition

In November, we were selected as an approved tuition provider for the National Tutoring Programme (NTP) along with 33 other providers. Being an NTP Tuition Partner means we can continue to provide English as an Additional Language tutoring to schools in Lancashire and to pupils from disadvantaged backgrounds. We can help widen access to tutoring and this tutoring is provided at a subsidised rate of 75%.

**Added  
support  
for your  
school.**

Visit [nationaltutoring.org.uk](https://nationaltutoring.org.uk) to get started.

Access high-quality,  
subsidised tutoring  
for your pupils.

**National  
Tutoring  
Programme**

Tuition Partners

We have now started NTP tuition in primary and secondary schools, supporting many disadvantaged pupils in learning English so they can access the curriculum and fulfil their potential.

**“We were very pleased with the work the tutor did and pupils made good progress.”** *Head teacher*

Our EAL tutors are qualified teachers and plan personalised learning sessions for their pupils. Our tuition is proven to have an impact on progress and schools have reported “exceptional” or “rapid” pupil

progress as a direct result of tutor support.

We are still currently delivering face to face support where pupils are attending schools and this support is essential, and are also taking steps to begin online delivery of tuition.

We still have places available and have recruited new tutors to further increase our capacity to deliver this support. To access tutoring for your school, visit the [NTP website](https://nationaltutoring.org.uk) or email us at [ema.support@lancashire.gov.uk](mailto:ema.support@lancashire.gov.uk)

**Contact Us** || Ethnic Minority and Gypsy, Roma and Traveller Achievement  
**Telephone** 01772 532429 || **E-mail** [ema.support@lancashire.gov.uk](mailto:ema.support@lancashire.gov.uk)



[www.lancsngfl.ac.uk/ema](https://www.lancsngfl.ac.uk/ema)



[@EMA\\_Service](https://twitter.com/EMA_Service)

# "Our Voice" The Dukes Theatre Project for GRT Young Women

*'Our Voice' is a blended autobiographical theatre project for young women from Gypsy, Roma & Traveller (GRT) communities across Lancaster and Morecambe. Sessions took place in person at The Dukes Theatre, Lancaster, or online via Zoom during lockdown 2.*

**Carl Woodward, Creative Learning Manager tells us more:**

This targeted participatory work is designed to understand those different to ourselves. It is a celebration of the culture and traditions of GRT stories, whilst exploding negative stereotypes. It is true that Gypsy, Traveller and Roma communities are one of the most marginalised ethnic groups in society.



We are looking forward to The Dukes' 50<sup>th</sup> Birthday later this year with a renewed commitment to tell stories that matter, being there for our community and delivering societal change – ensuring that participatory initiatives are welcoming to those from many different backgrounds; it is an essential component now and in the future.

The pandemic has been one of the biggest challenges. Having to move online with Zoom and work virtually with the community during lockdown 2.0, enabled us to realise a unique and safe space where participants could share what they really feel and think, and where adults really listened – from the comfort of their own caravans, mobile homes and houses – wherever they were in the country. Most of the families had never used Zoom before. One family relocated to another part of the country for lockdown but were still able to participate.



This project is made possible, supported and funded by Lancaster University. We work closely with Lancashire County Council's Ethnic Minority/GRT Achievement Service, as well as active members of local Traveller Communities to ensure that we are being as representative as possible.

**We hope you enjoy a look into these wonderful workshops at <https://youtu.be/y4jNJoQ4bQ>**

## DON'T FORGET TO REFER EAL PUPILS FOR YOUR FREE VISIT

Our service offers funded advice visits for all international new arrivals, including asylum seekers and refugees, which are free to Lancashire maintained schools.

To arrange support, please complete the referral form under EAL on the Schools Portal.



[www.lancsngfl.ac.uk/ema](http://www.lancsngfl.ac.uk/ema)



[@EMA\\_Service](https://twitter.com/EMA_Service)

# Equality in the Early Years -Representation Matters

By Maxine Tildsley (Farington Nursery Manager)

Over the past 8 months global events have affected everybody in varying ways, depending on individual circumstances. In May the murder of George Floyd at the hands of the authorities in the USA sparked the largest anti-racism protests the UK has seen in centuries. Social media was awash with feelings of anguish and anger adding to the already high emotional state of the country.

The combination of these events presented to some the opportunity to stop and reflect. In particular the 'Black Lives Matter' movement and the outpouring of emotion from many people on television, along with terminologies and phrases such as white privilege, anti-racist, unconscious bias, having uncomfortable conversations and positive representation, led to hours of reflection on current equality and diversity practice in our setting.

Of course, as an early years setting, we pride ourselves on inclusivity. We have a robust equality and diversity policy as well as ensuring that British values underpin our daily pedagogy. *But is it truly embedded throughout all our nursery setting?* An in-depth audit took place and what became apparent was the need for more training. Equality and Diversity training within early years is not currently mandatory. In contrast, safeguarding training (DSL) is required to be retaken every 3 years. We asked ourselves, if a child belonging to a minority group isn't represented and valued equally along with their peers, would this in turn affect their emotional well-being. Absolutely. This then becomes a safeguarding concern.

The second thing that became apparent was the limited resources, and this is not through the mere act of searching for them and buying them. It is through the scarcity of resources available. For instance, when it comes to children's books, available to buy in the UK in 2019, 57% depict white characters, 38% depict animals and only 5% depict BAME (Black and Asian minority ethnicity) characters. Children's magazines show predominantly white people and children — so much so that one family created their own magazines to ensure their children can see themselves represented. Astonishing. These are now



published and are called 'Cocoa Girl' and 'Cocoa Boy' - well worth adding to the home corner. Small world toys, jigsaws and games are all noticeably hard to find representation; time is needed to search to adequately diversify the setting.

The time we were given to stop and reflect has resulted in many positive changes, most noticeably, through an afternoon of non-judgemental and interactive, diversity and unconscious bias training. This training was carefully and methodically researched and then composed and delivered by

Pictures from Indian Banquet

myself, in order to ensure an in-depth understanding and awareness was gained by our team. (continued over page)



[www.lancsngfl.ac.uk/ema](http://www.lancsngfl.ac.uk/ema)



[@EMA\\_Service](https://twitter.com/EMA_Service)

(continued from page 4) Training of this particular nature is at present limited within early years and, incredibly, within the education system as a whole. The training was very well received and now we, as a staff team, are far more comfortable talking about colour, race and differences in general and with less fear of getting it wrong, both within our team and with prospective families. We have a far greater awareness of stereotyping and unconscious biases and an increased commitment to bringing about change, not only within our setting but also on a far wider societal level.

***“You really can change the world if you care enough”***

*We strive to bring the diverse and colourful world into our setting to represent Britain as a whole and, ultimately, we endeavour to empower each and every child who, when they attend our nursery, can not only see themselves reflected back but are inspired to become whomever they choose.*

## Race & Cultural Awareness Workshop



The EMGRT Achievement Service can provide support to schools who want to develop this provision, including:

training, auditing, advice, multicultural workshops, school linking and more

Please email [ema.support@lancashire.gov.uk](mailto:ema.support@lancashire.gov.uk) to find out more.

## Making your Curriculum Culturally Inclusive



## Equality Policy and Guidance for Schools

The Equality Policy Guidance and Exemplar have been updated and will be available for schools to download on the Schools' Portal under 'Equality Policy':

[https://schoolsportal.lancsngfl.ac.uk/sp\\_atoz/service.asp?u\\_id=3581&strSL=E](https://schoolsportal.lancsngfl.ac.uk/sp_atoz/service.asp?u_id=3581&strSL=E)

Also available here will be an updated Equality Analysis Toolkit which supports schools in producing their Equality objectives and meeting their specific duty under the Equality Act.

We are also including a useful document published by the Children's Rights Alliance for England:

Making the most of the Equality act – a guide for children and young people in England- CRAE Equality Act 2010 Guide)



[www.lancsngfl.ac.uk/ema](http://www.lancsngfl.ac.uk/ema)



[@EMA\\_Service](https://twitter.com/EMA_Service)



We would like to congratulate **Marsden Community Primary School and Cribden House School** on successfully completing all six equality badges and being awarded the Lancashire Equality Mark.

During the accreditation visit to Marsden Primary we were particularly impressed by the way the whole school promotes equality and the excellent inclusive environment. A special mention must be made about the way school leaders engaged key stakeholders including governors, local faith leaders and parents to develop and design their HRE curriculum.

Cribden House were commended for the use of a planned programme of external faith visitors and regular review of strategies to evaluate impact. We also noted how pupils confidently spoke about lessons and how they had shared their learning with parents.

The Lancashire Equality Mark is awarded to schools who have taken measures to embed Equality throughout their practice with the goal of enabling all pupils to thrive in a supportive learning community. Schools are provided with resources, expert advice and support through termly network meetings. Led by the EMA team, school leaders will be guided through a clear framework and process of auditing and developing good practice in different areas of Equality. For further information contact [EMAService@Lancashire.gov.uk](mailto:EMAService@Lancashire.gov.uk)



### What are we doing this term?

## February is LGBT+ History Month

**LGBT History Month Packs 2021** from [www.stonewall.org.uk/](http://www.stonewall.org.uk/)

These packs focus on the lives and works of some courageous LGBT women.

There are packs for all Key Stages, including an SEND pack.

### Your Story, Our History: LGBT legislation

A Secondary and College resource from UK Parliament

[learning.parliament.uk/en/resources/](http://learning.parliament.uk/en/resources/)



### ONLINE STUDY CENTRES

Online study sessions are ongoing. These offer additional out-of-school academic support for pupils from Year 3 to Year 11, and are free of charge.

To register: <https://forms.gle/SPDAacq7n5KmUio79>

Further information will be given to registrants.

Any queries, please contact: [apu.chowdhury@lancashire.gov.uk](mailto:apu.chowdhury@lancashire.gov.uk) 07771 338879



[www.lancsngfl.ac.uk/ema](http://www.lancsngfl.ac.uk/ema)



[@EMA\\_Service](https://twitter.com/EMA_Service)

## Schools Linking Lockdown Update

Free to access Remote Learning and Home Learning Resources



Due to this latest lockdown, Linking plans are paused with the intention of resuming later in the year, when hopefully things may be a bit more settled. The linking programme structure is intentionally flexible this year - so if you are a linking school, please do not worry or feel under pressure about this project.

The Linking Network (TLN) have created a new [Teacher Remote Learning Resources section](#) on their website specifically to support teachers with remote teaching of PSHE, Citizenship Education, SMSC and British Values. These are free and available for all schools and consist of PowerPoints, lesson plans and other resources. TLN will be adding to this resource bank over the next couple of weeks, so do keep popping back to see what is available.

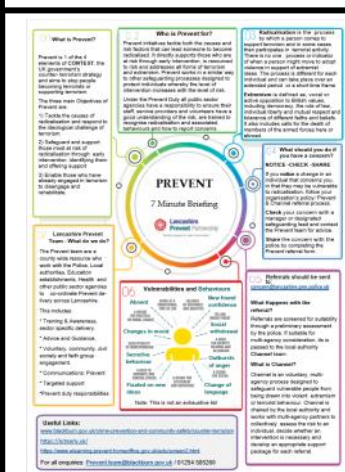
Last Spring in the first lockdown TLN created a [Home Learning](#) section on their website and that is also still available for sharing with parents.

If you have any questions then please do get in touch [ema.support@lancashire.gov.uk](mailto:ema.support@lancashire.gov.uk)

## Prevent Update

Counter Terrorism Police have launched a new safeguarding website ([www.actearly.uk](http://www.actearly.uk)) aimed at family and friends to encourage them to share concerns that a friend or loved one might be vulnerable to radicalisation.

The website aims to help increase Prevent referrals from family and friends into the police by increasing awareness, trust and understanding of the police's safeguarding role.



Prevent "7-Minute Briefing": <https://www.lancshiresafeguarding.org.uk/media/19240/prevent-7mb.pdf>

### WHO CAN HELP?

All Prevent Referrals:  
[concern@lancashire.police.uk](mailto:concern@lancashire.police.uk)

For support, advice, training and all other enquiries relating to Prevent or Channel, please contact the Lancashire Prevent Team:

☎ 01254 585260  
[Prevent.team@blackburn.gov.uk](mailto:Prevent.team@blackburn.gov.uk)  
<https://www.ipreventblackburn.org.uk/>

Channel advice and guidance  
[Prevent.team@blackburn.gov.uk](mailto:Prevent.team@blackburn.gov.uk)

Lancashire Police Prevent Team ☎ 101 and ask for the Prevent team. If urgent call 999. If you spot any stickers, graffiti or leaflets take a picture or report the location to [sticker@lancashire.police.uk](mailto:sticker@lancashire.police.uk). Please also CC your organisation's Prevent Lead.



## ENGLISH AS AN ADDITIONAL LANGUAGE NETWORKS FOR SCHOOLS

We hold termly cluster meetings for EAL co-ordinators that provide guidance on good practice, give policy updates and serve as an opportunity to raise concerns, seek advice and network with other EAL staff.

# EAL Cluster Meetings

## EAL CO-ORDINATORS MEETINGS MARCH 2021

Updates • Briefings on policy and research • Network • Share best practice

March 2021

### Focus: Adapting Remote Learning for EAL Learners

All staff with responsibility for improving standards for EAL learners in Lancashire schools are invited to attend an EAL Co-ordinators meeting which will be delivered as a live webinar session.

As educators aim again for the best possible provision for EAL learners at home, we offer practical ideas and suggestions on making remote learning more accessible for these pupils, and enabling their families to support them.



Primary & Secondary EAL Network	Online	Monday 1st March – 3.30 – 4.30pm
Primary & Secondary EAL Network	Online	Tuesday 2nd March – 3.30 – 4.30pm
Primary & Secondary EAL Network	Online	Wednesday 10th March – 3.30 – 4.30pm
Primary & Secondary EAL Network	Online	Thursday 11th March – 3.30 – 4.30pm

*The fee is £50, but each LCC school may reserve **one place free of charge**.*

To book your place, visit <https://clickquestion.lancashire.gov.uk/runQuestionnaire.asp?qid=842630>  
(short link: [tiny.cc/EALspring21](https://tiny.cc/EALspring21))



[www.lancsngfl.ac.uk/ema](http://www.lancsngfl.ac.uk/ema)



[@EMA\\_Service](https://twitter.com/EMA_Service)

# Training / Service Contacts

**To book on these courses go to <https://lccsecure.lancashire.gov.uk/lpds/courses.asp?subject=EAL>**

Course Title	Date	Time
<a href="#">How to Integrate and Teach International New Arrivals Including Refugees and Asylum Seekers - Online</a>	10/3/21	1300— 1500
<a href="#">Using Talk Boost Key Stage 1 Intervention to Boost Children's Language Skills - Online</a>	15/3/21 22/3/21	1530— 1730
<a href="#">Equality Network Meeting</a>	17/3/21 16/6/21	1330— 1600
<a href="#">Supporting EAL Pupils – a specialist course for Teaching Assistants (Primary and Secondary) 4-day course</a>	22/4/21	0900— 1600
<a href="#">Using the Early Talk Boost Intervention to Boost Children's Language Skills</a>	27/4/21	0930— 1530
<a href="#">Assessment, Setting Targets and Tracking Progress for EAL Pupils (2-part course) - Online</a>	18/5/21 & 25/5/21	1530— 1630
<a href="#">EAL or SEN? Language barrier or learning need?</a>	19/5/21	1300— 1500
<b>COMING SOON:</b> <a href="#">Developing Vocabulary for EAL Learners</a> (date to be confirmed)		

**Thank you School Staff and Keyworkers!**

Myanmar  
Greece  
Kazakhstan  
Georgia  
Serbia  
Finland  
Mexico  
China  
Singapore  
Iceland  
Japan  
Russia  
South Korea

## Advice Booklet for Schools - Home Learning for EAL Learners

**Email** [ema.support@lancashire.gov.uk](mailto:ema.support@lancashire.gov.uk)



@EMA Service