

LANCASHIRE COUNTY COUNCIL
ROAD TRAFFIC REGULATION ACT 1984
(VARIOUS ROADS, VARIOUS LOCATIONS, FYLDE BOROUGH, LANCASTER
CITY AND WYRE BOROUGH)
(REVOCAION, RESTRICTED ROAD, 30, 40 AND 50MPH SPEED LIMITS) ORDER 2013

The County Council of Lancashire, in exercise of its powers under Sections 82(2), 83(2), 84 and part IV of Schedule 9 to the **Road Traffic Regulation Act 1984**, as amended, ("the Act") and of all other enabling powers, after consultation with the Chief Officer of Police in accordance with Part III of Schedule 9 to the Act and consent from the Secretary of State in accordance with Section 125 to the Act, hereby makes the following Order: -

1. Revocation

Those parts of the Orders set out in Schedule 1 to this Order are hereby revoked.

2. 30mph Speed Limit

No person shall drive any motor vehicle at a speed exceeding 30 miles per hour on the length of road referred to in Schedule 2 to this Order.

3. 30mph Speed Limit (Restricted Road Status will apply)

No person shall drive any motor vehicle at a speed exceeding 30 miles per hour on the lengths of Restricted Road set out in Schedule 3 to this Order.

4. 40mph Speed Limit

No person shall drive any motor vehicle at a speed exceeding 40 miles per hour on the lengths of road set out in Schedule 4 to this Order.

5. 50mph Speed Limit

No person shall drive any motor vehicle at a speed exceeding 50 miles per hour on the lengths of road set out in Schedule 5 to this Order.

6. Exemption

No speed limit imposed by this order applies to vehicles falling within regulation 3 (4) of the Road Traffic Exemptions (Special Forces) (Variation and Amendment) Regulations 2011 when used in accordance with regulation 3 (5) of those Regulations.

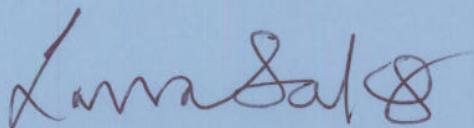
7. Commencement of Order

This Order will come into force on the 28th May 2013 and may be cited as the "Lancashire County Council (Various Roads, Various Locations, Fylde Borough, Lancaster City And Wyre Borough) (Revocation, Restricted Road, 30, 40 And 50mph Speed Limits) Order 2013".

Dated this 22nd day of May 2013.

THE COMMON SEAL of the Lancashire County Council was hereunto affixed following a decision made on the 30th day of April 2013 by the Cabinet Member for Highways and Transport

Authorised Signatory



22444

Schedule 1 – Revocations

- a) **"The Borough Council Of Fleetwood (40mph Speed Limit)(No.1) Order 1963"** insofar as it relates to the 40 MPH Speed Restriction - Broadway, from a point 40 yards south of its junction with Fleetwood Road in a southerly direction to the boundary between the Borough of Fleetwood and the Urban District Council of Thornton Cleveleys.
- b) **"The County Council Of Lancashire (Restricted Roads)(No.3) Order 1976"** insofar as it relates to the 30 MPH Speed Restriction (restricted road) - B.5269 Singleton - Longridge Road, from a point 30 metres (33 yards) south of Dead Dam Bridge to a point 75 metres (82 yards) west of its junction with Manor Road, a distance measured along that length of road of approximately 640 metres (700 yards)
- c) **"Lancashire County Council (B5269 Preston Road, Inskip, Wyre Borough)(Revocation And Restricted Road) Order 2000"** insofar as it relates to the 40 MPH Speed Restriction - B 5269 Preston Road, Inskip, from a point 360 metres west of its junction with Manor Road for a distance of 645 metres in a westerly direction
- d) **"The Wyre Borough Council (A586 Garstang Road East & West, Poulton-Le-Fylde) Extension Of 30mph Speed Limit Order 2003"** insofar as it relates to the 50 MPH Speed Restriction - Blackpool-churchtown Road (a 586), from a point 350 yards west of its junction with Hall Lane at St. Michael's-on-Wyre to a point 170 metres east of its junction with Aldon Road at Poulton-le-Fylde, a distance of 6 miles 970 yards (887 metres) approximately
- e) **"The Lancashire County Council (A6 Principal Road-Galgate To Scotforth Lancaster City)(50mph Speed Limit) Order 1995"** insofar as it relates to the 50 MPH Speed Restriction - A.6 Principal Road, from a point 10 metres north of Galgate Bridge to a point 73 metres south of its junction with Rays Drive
- f) **"The Lancashire County Council (A6 Main Road And Various Roads, Bolton-Le-Sands/Slyne, Lancaster City)(Revocation, Restricted Road And 40mph Speed Limit) Order 1999"** insofar as it relates to the 40 MPH Speed Restriction: A.6 Main Road/slyne Road, from a point 103 metres north of its junction with Bottomdale Road in a northerly direction to a point 135 metres south-west of its junction with St. Michael's Lane
- A6 Main Road/ Lancaster Road, from a point 90 metres north-west of its junction with Hawthorn Road to a point 310 metres south of its junction with Crag Bank Road
- g) **"The Lancashire County Council (A6 Preston-Lancaster Road, Bilborrow And Myerscough, Wyre Borough)(40mph And 50mph Speed Limits) And (50mph Speed Limits) And (Revocation) Order 1993"** insofar as it relates to the 40 MPH Speed Restriction

A6 Preston-lancaster Road, from a point 90 metres south of its junction with St. Michael's Road in a northerly direction to a point 175 metres south of the Green Man Canal Bridge, a distance of approximately 1450 metres.

h) **"The Lancashire County Council (A6 Preston-Lancaster New Road, Nateby, Wyre Borough)(50mph Speed Limit) Order 1995"** insofar as it relates to the 50 MPH Speed Restriction - A.6 Preston-lancaster New Road, from a point 10 metres south of its junction with Kepple Lane to a point 10 metres south of its junction with Snapewood Lane

i) **"The Lancashire County Council (A6 Preston-Lancaster New Road, Cabus And Forton , Wyre Borough)(50mph Speed Limit) Order 1996"** insofar as it relates to the 50 MPH Speed Restriction - Preston-lancaster New Road, from a point 10 metres south of its junction with Snapewood Lane to a point 30 metres north of its junction with Station Lane

Schedule 2 – Introduction of 30mph speed limit

a) Inskip Lane, Inskip-with-Sowerby, from a point 200 metres west of its junction with Pinfold Lane, for a distance of 752 metres in a westerly direction.

Schedule 3 – Introduction of Restricted Roads status

a) Inskip Road and Mill Lane, Inskip-with-Sowerby, from a point 200 metres West of Pinfold Lane, in an easterly then southerly direction to a point 120m north of Higham Side Lane.

b) Broadway, Fleetwood, both sides, from a point 36 metres south of its junction with Fleetwood Road to a point 228 metres south of the centreline of South Strand for a total distance of 1605 metres

c) A6 - Slyne Road - Bypass Road - Main Road, Bolton-le-sands, both sides, from a point 195 metres south of the centreline of Greenwood Avenue to a point 95 metres north of the centerline of St Nicholas Lane for a distance of 2480 metres

Schedule 4 - Introduction of 40mph speed limit

a) Broadway, Fleetwood, both sides, from a point 228 metres south of the centreline of South Strand to a point 204 metres south of the centreline of Westbourne Road.

b) A6 - Scotforth Road, Lancaster, both sides, from a point 73 metres south of the centreline of Rays Drive to a point 157 metres south of the centreline of Green Lane for a distance of 1825m

c) A6 - Slyne Road - Main Road, Bolton-le-sands, both sides, from a point 103 metres north of the centreline of Bottomdale Road to a point 195 metres south of the centreline of Greenwood Avenue

d) A6 – Main Road, Bolton-le-sands, both sides, From a point 95 metres north of the centerline of St Nicholas Lane to a point 310 metres south of the centreline with Crag Bank Road

e) Ship Road (B5290), Thurnham, both sides, From a point 250 metres east of the centreline of Jeremy Lane to its junction with A588 Lancaster Road

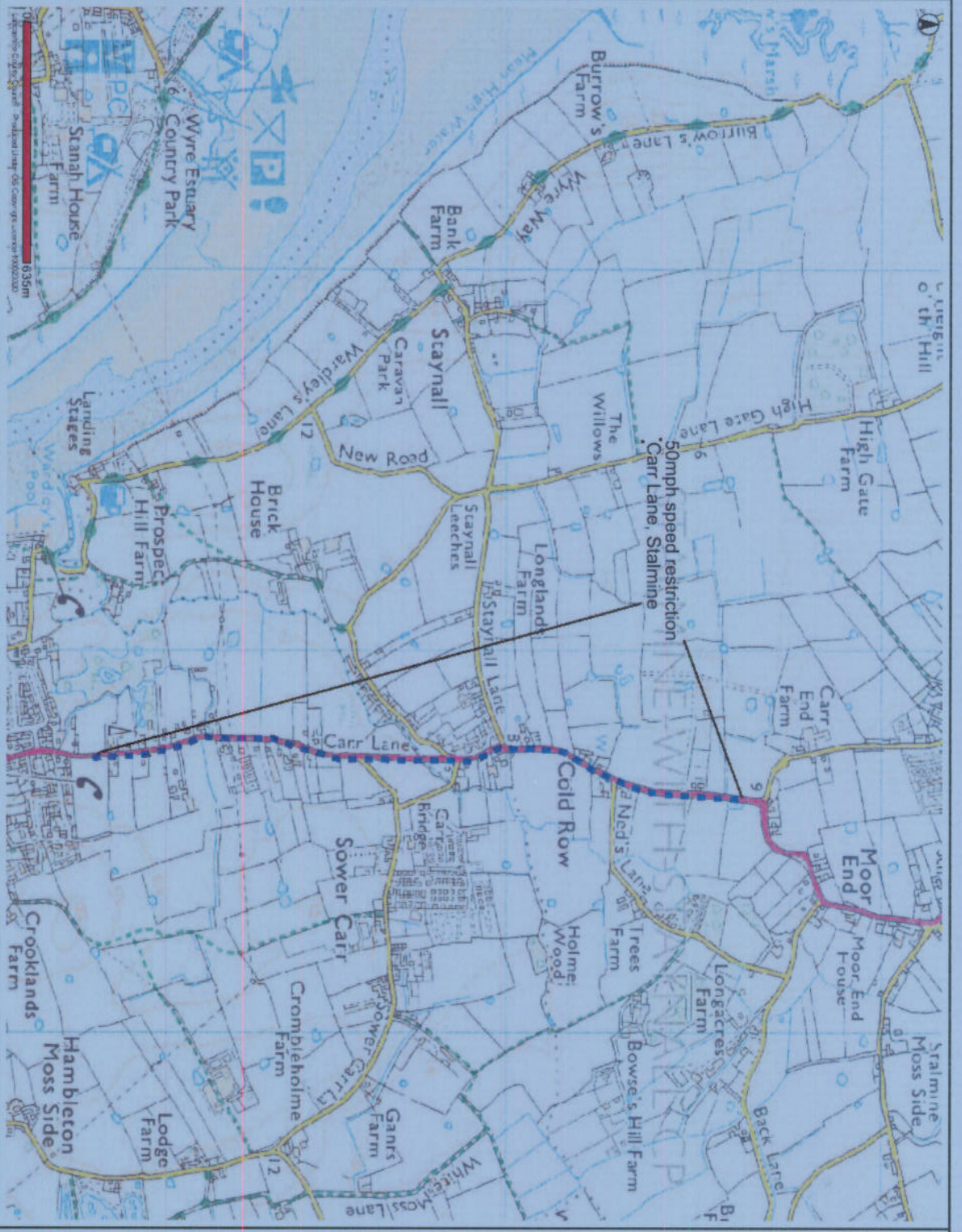
- f) Garstang Road, Claughton-on-brook, both sides, from a point 90 metres south of its junction with St Michaels Road (Bilsborrow) to a point 603 metres south of its junction with New Lane (Bilsborrow) for a total distance of 1719m

Schedule 5 - Introduction of 50mph speed limit

- a) A6 Preston Lancaster Road, Lancaster Road, Lancaster New Road, Garstang Bypass Road, Garstang Road, both sides, from a point 603 metres south of its junction with New Lane (Bilsborrow) to a point 415 metres south of its junction with Salford Road (Galgate) for a total distance of 15553m
- b) Preston Lancaster Road, Lancaster, both sides, from a point 157 metres south of the centreline of Green Lane to a point 35 metres north of the centreline of Tanhouse
- c) Carr Lane, Stalmine-with-staynall, both sides, from a point 175 metres north of the centreline of Carr Road to a point 53 metres south of the centreline of Carr End Lane
- d) Garstang Road A586, New Garstang Road A585, Blackpool Road A586, St Michaels, both sides, from a point 463 metres west of its junction with Hall Lane at St. Michael's-on-Wyre to a point 170 metres east of its junction with Aldon Road at Poulton-le-Fylde, a distance of 10.3 kilometres.



40mph Speed Restriction B5290 Ship Road, Glasson Dock, Lancaster District



50mph Speed Restriction Carr Lane, Stalmine with Staynall, Wyre District



Speed limit Wyre P2

Environment Directorate
 Executive Director,
 Jo Turton
 P.O. Box 9 Guild House, Cross Street,
 PRESTON PR1 8RD

SCALE	1 : 10000
DATE	06/08/2010
DRAWING NO.	1
DRAWN BY	PAB
Scale with care as distortion may occur	

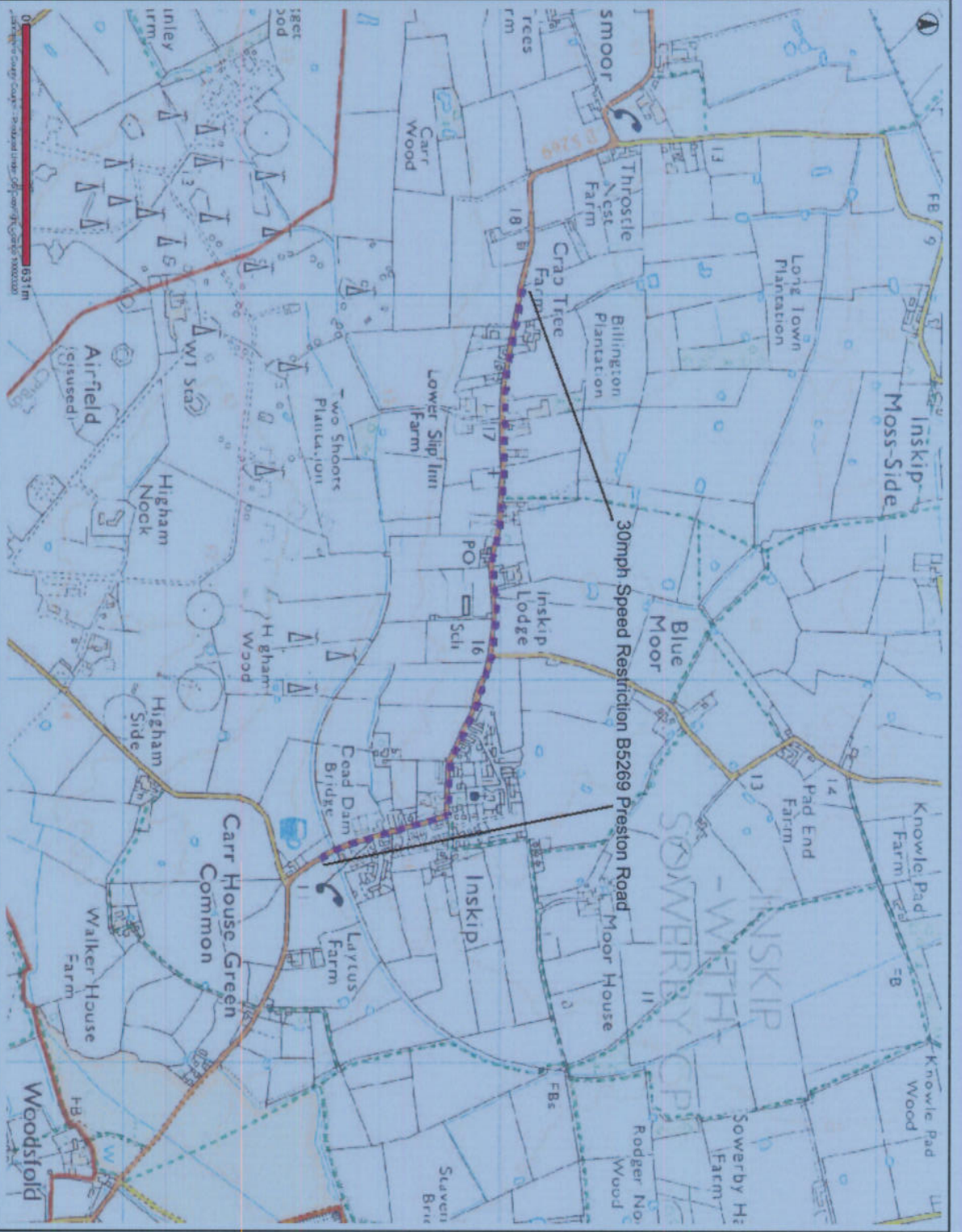
Key to Restriction Types Displayed

- 40 MPH Speed Restriction
- 30 MPH Speed Restriction



Location Map

The location map is an inset map in the bottom left corner, showing a larger geographical area with a red rectangle highlighting the specific location of the main map.



30mph Speed Restriction B5269 Preston Road, Inskip, Wyre District



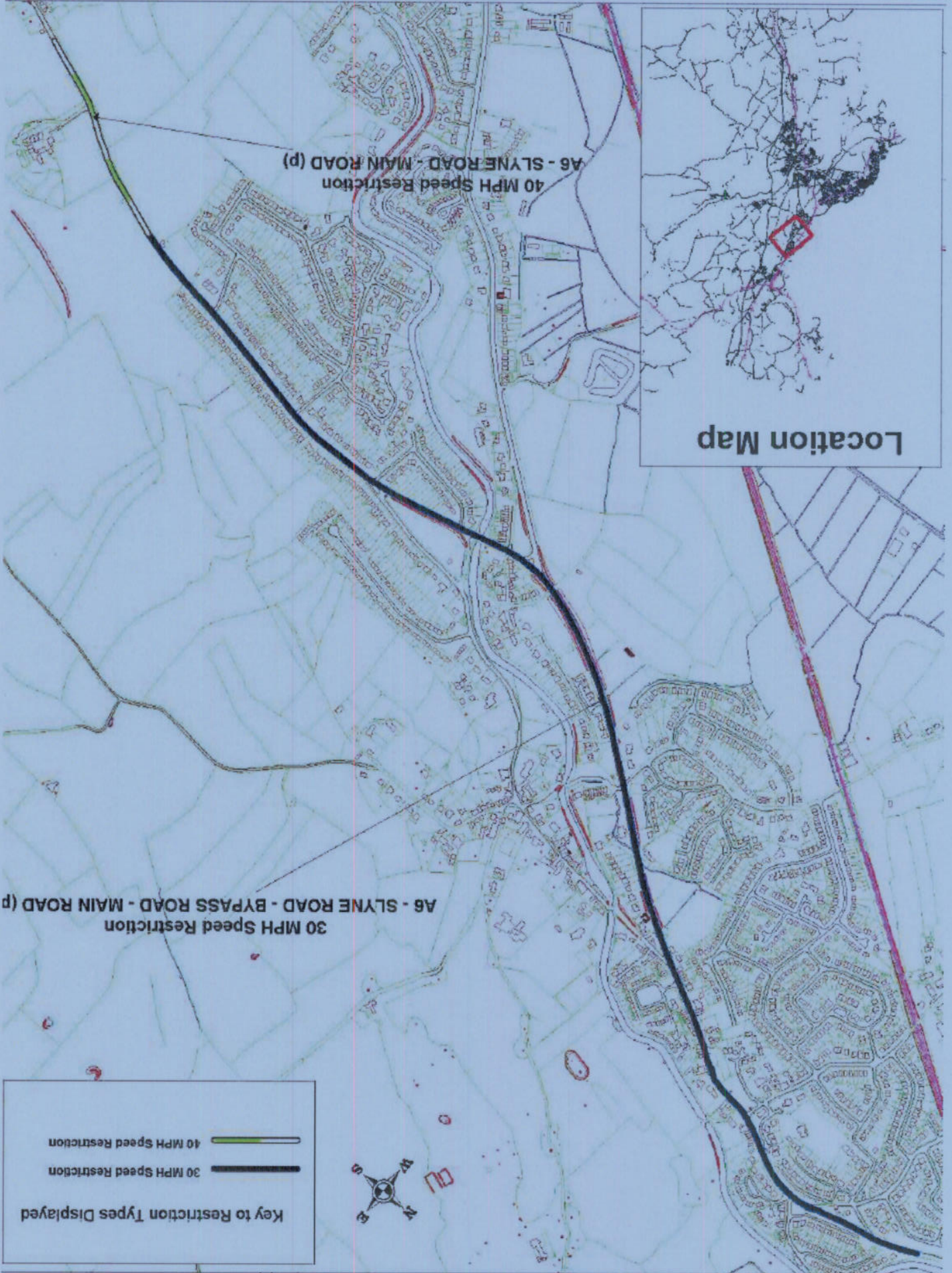
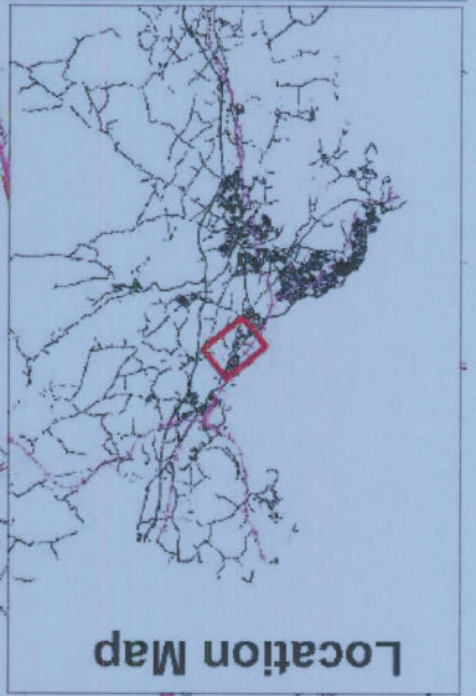
Date: 23/04/2013

This map is reproduced from Ordnance Survey material with the Permission of Ordnance Survey on behalf of the Controller of Her Majesty's Stationery Office (C) Crown Copyright. Unauthorised reproduction may lead to prosecution or civil proceedings. Lancashire County Council - OS Licence 100023320 (C) Centre of map: 345841437928



50mph Speed Restriction A585/ A586 Blackpool Churchtown Road, St Michaels/ Poulton le Fylde, Wyre/ Fylde Districts

SCALE	1 : 10000
DATE	12/08/2010
DRAWING NO.	1
DRAWN BY	PAB
Scale with care as distortion may occur	



Environment Directorate
Jo Turton
Executive Director
P.O. Box 9 Guild House, Cross Street,
PRESTON PR1 8RD
Lancashire County Council
Licence No. 2003
A Crown copyright. All rights reserved.

SCALE	1 : 15000
DATE	12/08/2010
DRAWING NO.	2
DRAWN BY	PAB
Scale with care as distortion may occur	

Key to Restriction Types Displayed

- 50 MPH Speed Restriction
- 40 MPH Speed Restriction



30 & 40mph Speed Limits A6 Bolton le sands, Lancaster District

