

SCHEME DESCRIPTION

A new cycle and pedestrian crossing facility will be provided on the Ringway-Friargate junction, together with a 2 way cycle lane around the junction and along Ringway, which connects to the wider cycling network.

Friargate North will be pedestrianised between Ringway and Marsh Lane, with a central cycle way that can also be used as a time restricted access route for delivery and service vehicles. Vehicle access into and out of the Friargate junction will no longer be possible but alternative routes will be provided for servicing and deliveries. See drawings PE-005 & PE-006 for more information.

The public space around the junction will be opened up, and regenerated with new paving, seating and tree planting. New bus stops and a cycle parking facility will be provided to make it easier for people to travel into Preston on their bike or by bus

Our aim for the Peace Garden is to provide an attractive, welcoming plaza area that is more in keeping with modern day Preston. The plaza aims to create a sense of calm and tranquillity, through using a seating wall and low planter to create a safe space that is separated from the traffic on Ringway.

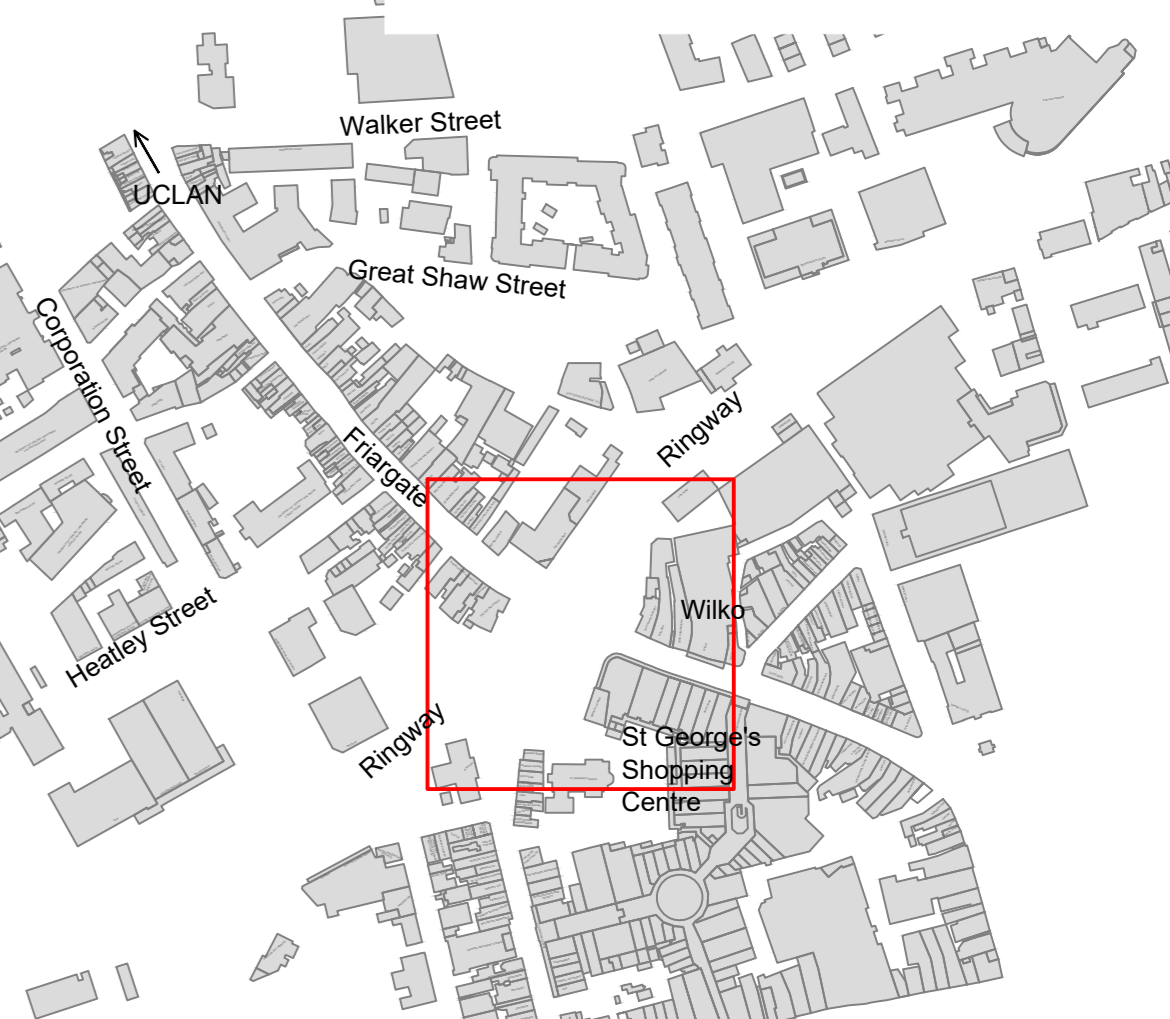
The space will incorporate many elements of peace including existing plaques and poems from the Peace Garden as well as some new elements such as a new central paving feature.



*Based on Ordnance Survey mapping with the permission of the Controller of Her Majesty's Stationery Office. © Crown copyright. Unauthorised reproduction infringes Crown copyright and may lead to prosecution or civil proceedings.
Lancashire County Council Licence No. LA100023320

- LEGEND**
- Cycle way. Edged with contrasting corduroy flush kerbs
 - Pedestrian crossing point over cycle way
 - Cycle Way
 - New signaled pedestrian & cycle crossing facility, with central cycle lanes. Surfaced with imprinted asphalt
 - Granite flagged paving areas
 - Existing trees to be retained (subject to survey)
 - New tree planting*
 - Existing trees to be removed
 - Seating and litter bins*
 - Cycle parking facility*
 - Cycle stands*
 - Bollards or similar to help control vehicle access*

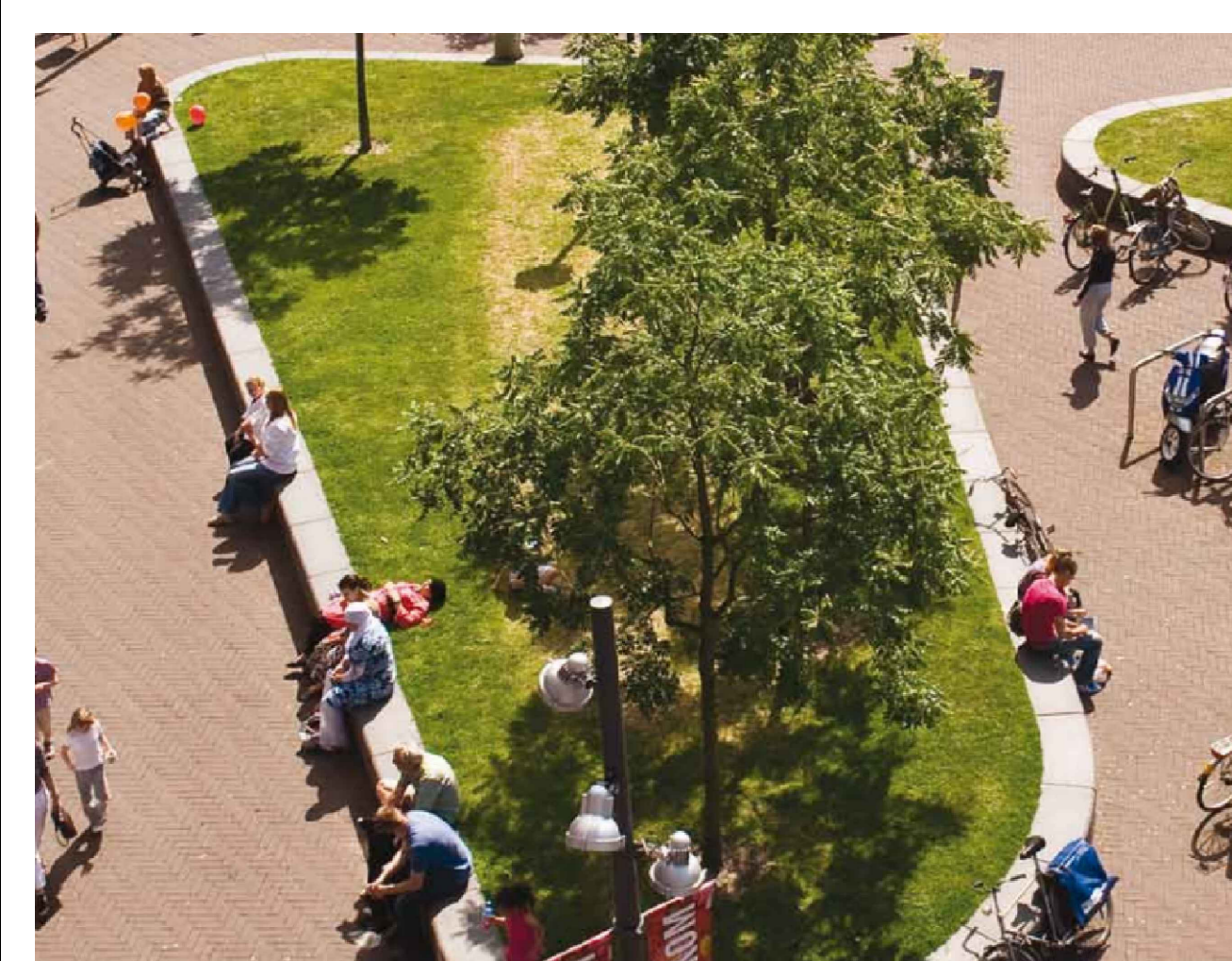
DRAWING LOCATION



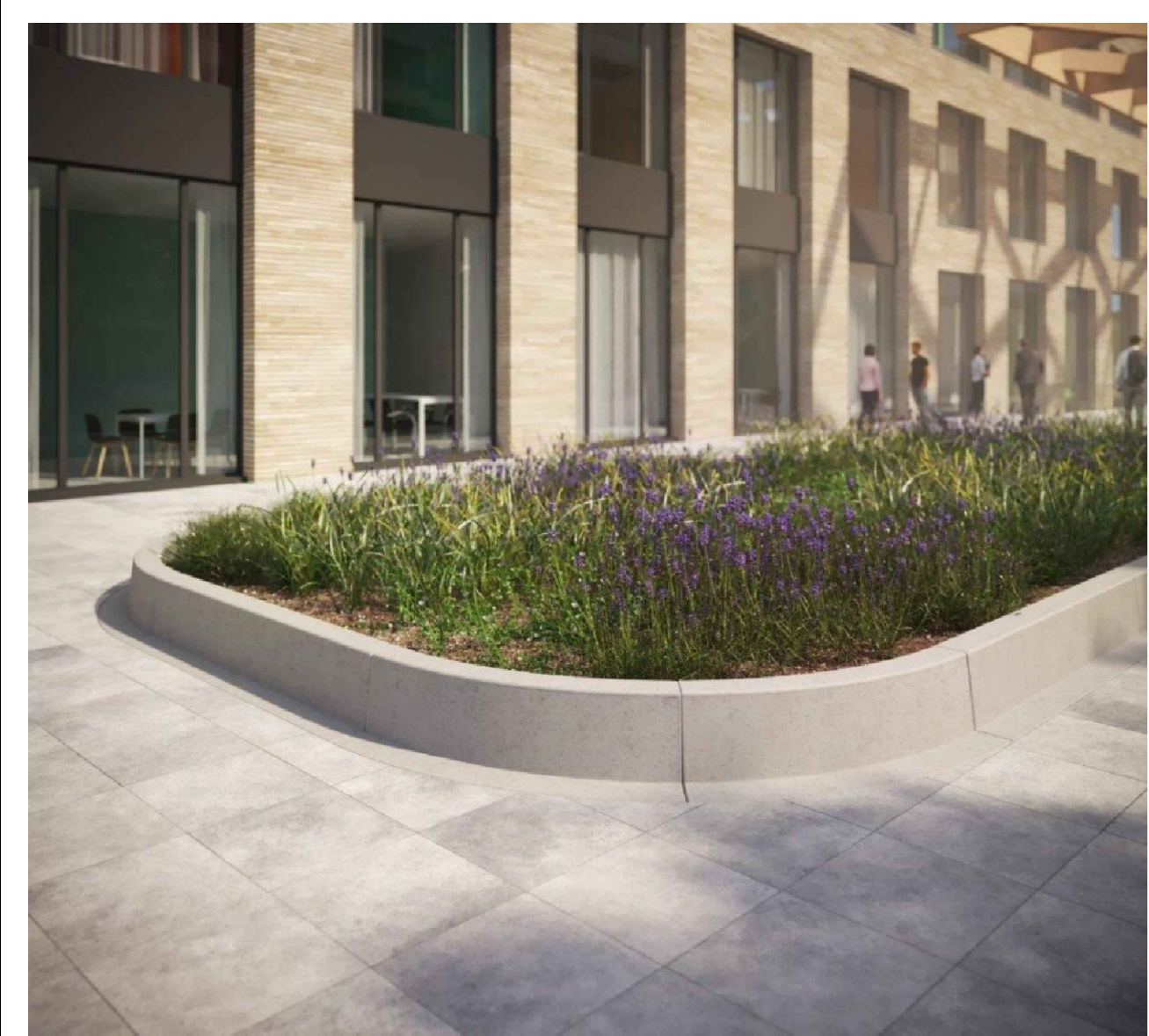
A	05.10.21 Updated for October Engagement	RH	KP/JS
No.	DATE	AMENDMENT DETAILS	CHECKED BY
REVISIONS			

Lancashire County Council Design and Construction

PROJECT TITLE			
TRANSFORMING FRIARGATE NORTH AND RINGWAY			
DRAWING TITLE			
CONCEPT DESIGN RINGWAY FRIARGATE JUNCTION AREA			
DRAWN BY	KC/JS	DATE	MARCH 2021
CHECKED BY	RH	DRAWING No.	10950-PE-004
PROJECT No.	10950	SHEET No.	1 OF 1
SCALE @ A0	1:200	ISSUE PURPOSE	PUBLIC ENGAGEMENT



Curved Seating Wall



Example of low planter



Example of possible Peace Garden artwork



View of the Peace Garden, looking down Friargate South



View of the Peace Garden, looking towards St. Georges Centre



View looking east along Ringway, with mobility centre car park to right