



# Lancashire SEND Plan 2021-2025

Improving the lives of children and young people with SEND, and their families

# Foreword from Our Leaders

## Lancashire SEND Plan 2021-25

As local leaders, we are delighted to introduce the Lancashire Special Educational Needs and/or Disabilities (SEND) Plan for 2021-2025 on behalf of the Lancashire SEND Partnership.

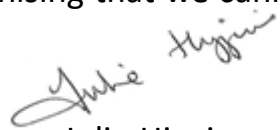
Our refreshed plan has grown from the collective voices of our SEND partnership and SEND community. It provides direction and challenge to enable positive outcomes for children and young people so that they can prepare for life as an adult. The Plan will be delivered through a number of actions that will be reviewed annually alongside feedback we receive on the impact of changes and improvements and on our performance. As a result we may change and adapt those actions.

Since the initial inspection of our SEND services across education, health and care in November 2017 we are better at using data and feedback to understand our SEND population and their lived experience. This means we are better able to improve existing services and to jointly commission the right services. We continue to improve the way that we work, the services we deliver, and the support we provide across our SEND community. Despite the changes we have made over the last few years, we recognise that there is more work to do so that we achieve our vision.

Although working through the pandemic has seen unprecedented times, the SEND Partnership was able to maintain services, and learned new things, whilst also strengthening the ways we together.

The Lancashire SEND Plan 2021-25 supports our continuing growth as a partnership, with children and young people and their families at the centre of all that we do. It sets out our vision, priorities and ways of working, ensuring that the voices of children and young people and their families are heard as we reshape services to meet local needs.

Our partnership across education, health and care, and with the Children and Young People's SEND Board and Lancashire Parent Carer Forum, has strengthened over recent years, and we continue to improve the ways we work together, recognising that we cannot achieve our vision in isolation.



Julie Higgins

Chair of Lancashire SEND Partnership



Edwina Grant

Vice Chair of Lancashire SEND Partnership



Think SEND  
Think Voice

# What is the Lancashire SEND Plan?

## Lancashire SEND Plan 2021-25

The Lancashire SEND Plan 2021-25 describes what we need to do so that every child or young person with SEND experiences a good SEND offer (see page 5 for a definition of SEND, and page 6 for a description of a good SEND offer ).

In November 2017 the Lancashire County Council area was inspected by two inspection agencies – Ofsted which carries out education inspections, and the Care Quality Commission (CQC) which carries out health inspections. The purpose of the inspection was to test the Lancashire SEND Partnership in the delivery of our statutory duties for children and young people with SEND (see list of partners on page 4).

The result of the inspection was that there were areas of significant concern which needed to be addressed, and these were subsequently worked on. An inspection revisit in March 2020 reviewed the areas to be addressed, and the improvement work on most of the areas of concern was considered to have progressed well. However 5 areas still needed more work which was monitored by the Department for Education and NHS England through an accelerated progress plan.

We know that we have more work to do so that all children and young people with SEND know that we are doing the best we can for them. The Lancashire SEND Plan for 2021-25 describes our ongoing improvement activity, including how we will work.

Along with our new vision, the SEND Plan makes sure we deliver on our promises to continually improve the Lancashire SEND offer in education, health and care from 2021-2025.



Think SEND  
Think Voice

# The Lancashire SEND Partnership

## Partnership

The Lancashire SEND Partnership is made up of the following:

- Lancashire Children and Young People's SEND Board and POWAR representing the voice of the children and young people of Lancashire
- Lancashire Parent Carer Forum representing the voice of families, and the voice of children and young people who cannot speak for themselves
- Lancashire County Council (with overall responsibility for SEND and with representatives from education, social care and public health)
- Education settings and schools
- Voluntary, faith and community organisations

- NHS Clinical Commissioning Groups (6 organisations with overall responsibility for health services for children and young people in Lancashire with SEND)
- NHS Healthcare Providers (GPs, Hospitals, Community Services, Mental Health, Specialist Services)
- Additional Healthcare Providers (Virgin Care 0-19 Community Services)
- Public Health
- Designated Clinical Officers for SEND
- Lancashire SEND Information Advice and Support Team



Think SEND  
Think Voice

# Special Educational Needs and/or Disabilities

## What is SEND?

### **SEND stands for Special Educational Needs and/or Disabilities**

Special educational needs and disabilities include a range of difficulties, conditions or additional needs. They include those relating to communication and interaction, cognition and learning, social, emotional and mental health difficulties, and physical/sensory needs, as well as disabilities and specific learning difficulties.

Lancashire SEND Partnership covers the Lancashire County Council area (see page 3 for the organisations that are members of the Lancashire Partnership), and has a legal duty to support children and young people of Lancashire with SEND, from birth up to 25 years of age. This includes having their needs identified as early as possible, having their needs assessed and supported, and improving their outcomes. Our responsibilities up to the age of 25 years means we must also help children and young people prepare for the adulthood that they and their family aspire to.

Our responsibilities for SEND are described in full in the SEND Code of Practice which can be accessed here - [SEND code of practice: 0 to 25 years](#)



Think SEND  
Think Voice

# A Good SEND Offer

## What does a good Lancashire SEND offer look like?

Based on the SEND Code of Practice, along with the feedback we received in the inspections, at the Think SEND events and in other conversations, this is a good Lancashire SEND offer:

- Puts the child or young person at the centre of what we do
- Compliant with all of our statutory duties across all sectors
- Delivered through timely and responsive services
- Clearly explains the child or young person's SEND journey
- Staff are compassionate and understanding about the experience families have on their SEND journey

- The majority of children and young people with SEND successfully attend mainstream school
- Quality teaching, curriculum and access meets the needs of children and young people with SEND whatever education or early years setting they attend
- SEN Support is available in all education settings for those with needs that do not require an education, health and care plan (EHCP)
- Education, Health and Care Plans describe the support a child or young person needs, and the outcomes they would like to achieve

- The voice of the child or young person is included in our work
- The voice of parent carers is included in our work
- Criteria for access to services and support are clear and communicated
- Information is freely available on the Lancashire SEND Offer website
- Regular SEND events and workshops are available throughout the year

- Service provision is consistent across Lancashire and meets the needs of the children and young people
- Our staff in all sectors know and understand their role in supporting children and young people with SEND, and the role of others across the sectors
- Staff in all sectors are skilled, motivated and effective in supporting needs, and staff turnover is low
- Staff are responsive to adapting pathways / services to meet the needs of the population they serve



Think SEND  
Think Voice

# Think SEND

In spring 2021 the Lancashire SEND Partnership ran a series of 'Think SEND' events with parent carers, local authority staff, healthcare practitioners and teachers who helped us to get a better understanding of the changes that people want to experience in the delivery of SEND services.

At the events, we agreed that SEND is everyone's business, and that children and young people need to be at the heart of everything we do. We also agreed that we want to achieve the best for our children and young people with SEND with consistency and clarity.

The majority of people at the events chose for our vision to be: '**Improving the lives of children and young people with SEND**'. We chose this vision together, as it describes everything that we need to do as partners.

This is our call to action to deliver that vision over the next four years.

IMPROVING THE LIVES OF  
CHILDREN AND YOUNG PEOPLE  
WITH SEND, AND THEIR FAMILIES

# SEND Vision

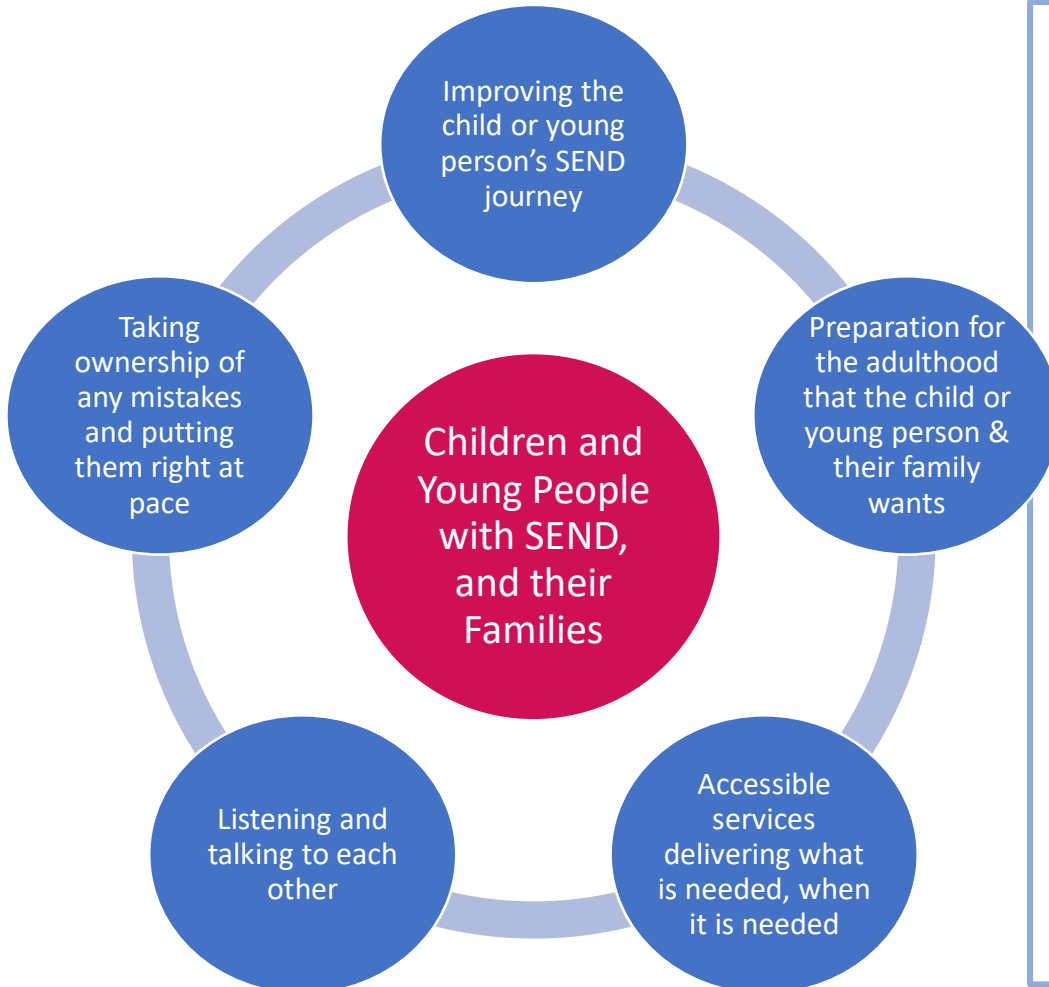


Think SEND  
Think Voice

Improving the lives of  
children and young  
people with SEND,  
and their families

# Priorities

Through co-production we have identified 6 priorities that are important to children and young people, their families, and the staff who support the SEND journey. The Lancashire SEND Partnership aims to achieve specific benefits for children and young people with SEND through working on these priorities, described below. In delivering these priorities, we will ensure we identify, assess and meet needs, and improve outcomes through all that we do.



- Improving the child or young person's journey - Families understand what is happening, when it is happening, and what that means for them. Staff support families on the journey, and know where they fit in alongside other services and other sectors.
- Preparation for the adulthood that the child or young person and their family wants for them – children and young people access opportunities right for them and their needs
- Accessible services delivering what is needed, when it is needed – services are available and deliver what children and young people with SEND need
- Listening and talking to each other – it is important that we all have greater understanding of what is happening, what needs to happen, and what changes need to be made for the child or young person, for families, and for staff. We all need to talk to and listen to each other.
- Taking ownership of any mistakes and putting them right at pace – families need to be able to trust the staff they encounter on the SEND journey, and know that any mistakes will be resolved at pace. Staff need to know they are supported.



Think SEND  
Think Voice

Improving the lives of  
children and young  
people with SEND,  
and their families



# What the Priorities mean

| PRIORITY  | WHAT THIS MEANS  |
|---|--|
| Improving the child or young person's SEND Journey                                  | Simplifying help and support, and describing that help and support in ways that makes it easy for people to know what the journey is for different categories of need, at different stages and in different situations.  |
| Preparation for the adulthood that the child or young person and their family wants | Improving life chances through lifelong outcomes, starting with access to the same level of education as others, leading to education, employment and training that is specific to individual need.  |
| Accessible services delivering what is needed, when it is needed                    | Thinking creatively to use limited resources to best effect, with transformation and redesign of services being key to ensuring consistent and effective service provision, delivered what is needed, when it is needed.   |
| Listening and talking to each other   | Co-production will happen at the individual level, service level and strategic level, listening and including the voice of the child or young person. The SEND offer is communicated in clear and accessible ways for individuals, groups, and the wider population, as well as for staff across services and sectors. |
| Take ownership of any mistakes and put them right at pace                           | All staff commit to being open and honest with families when something goes wrong, and working at pace to correct actions, whilst also learning from the situation to enable change and improvement.   |



Think SEND  
Think Voice

Improving the lives of children and young people with SEND, and their families

# Ways of Working

The way that we work, how we do what we do for children and young people with SEND, is equally important as the work we do. We are therefore proud to commit to 5 ways of working to deliver our priorities for children, young people with SEND, and their families. We will do our best to use these ways of working at all times and in all that we do for children and young people with SEND.

The 5 ways of working are based on what people told us is important to them. We have heard key messages about communicating regularly and often, building trust, doing what we said we would do, being open to changing things when we get it wrong – and admitting that we made mistakes – and about learning and adapting as we go about our work.



Think SEND  
Think Voice

Improving the lives of children and young people with SEND, and their families

We want you to hold us to account for these ways of working, so this is our promise to you.

What do our promises mean?

Engagement and co-production

We co-produce with children, young people and their families as our default starting point. We listen, hear and understand each other, as well as giving and receiving meaningful updates.

Join up across sectors and services

We integrate services within and across sectors by working collaboratively to make best use of our resources, giving early, easy access in a system that is easy to understand and navigate.

Integrity and Accountability

We build trust by doing what we say we will do, being accountable for what we do, and reporting through governance assurance on how well we work on SEND matters.

Continually Improving

We continually improve what we do and how we do it so that we improve the lived experiences and life chances of children and young people with SEND.

Continually Learning in Partnership

We facilitate the learning of all partners to continually transform in relation to the SEND Plan, systems and ways of working, sharing good practice across our geographical area.

# The Lancashire Promise



Think SEND  
Think Voice

Improving the lives of children and young people with SEND, and their families

# Turning Priorities into Action

The Lancashire SEND Plan describes what we need to do so that every child or young person with SEND experiences a good SEND offer. There is a lot of work to do, which is why we are giving ourselves the next 4 years to make a difference. The next steps are to turn the priorities into action, and this is how we will do that:

The SEND Plan is the framework around which all improvement and delivery activity is managed. Each sector of the partnership, and each service within the sectors is required to review and understand the plan in the context of its own gaps and improvement areas.

## What does that mean?

Each sector and service will create its own action plans to work on over the next 4 years in the context of the 5 priority areas that people told us they want us to concentrate on.

A guide will be provided for the partnership to help cascade the SEND Plan and to turn the priorities into action. As there is much to do, there are three categories of work in the following priority order:

- **Must do's** – these are the things we must do to meet our statutory duties
- **Should do's** – these are the things we will do to improve the quality of what we deliver
- **Could do's** – these are the gold standards we will work towards through continuous improvement

## What next?

In the first 12-18 months of working on the SEND Plan, the focus is on ensuring we deliver on the things we must do now, including reviewing our performance against our statutory duties and ensuring that we fulfil our commitments. This activity will be informed through an analysis of the SEND Data Dashboard on a quarterly basis, as well as through regular audits of the SEND Code of Practice. Alongside this we will continue to improve the quality of what we deliver, and aim to work towards gold standards towards the end of the period of the plan.

# Priorities into Action



Think SEND  
Think Voice

Improving the lives of  
children and young  
people with SEND,  
and their families

# Here to Help

Get in touch with the **SEND Partnership Team** by email: [SENDPartnership@Lancashire.gov.uk](mailto:SENDPartnership@Lancashire.gov.uk)

The **SEND Partnership website** page is where we share information about the SEND Partnership, the SEND Partnership Board and the SEND Partnership Team, along with useful documents about the SEND improvements: [Lancashire SEND Partnership - Lancashire County Council](#)

**Lancashire SEND Local Offer website** provides information about what is available to children and young people with SEND and their families: [Special educational needs and disabilities - local offer - Lancashire County Council](#)

**Lancashire Parent Carer Forum** is available to help and support parent carers – find out more on their website: [Lancashire Parent Carer Forum](#)

**Children and Young People (CYP)** can find out how to get involved by contacting the CYP Participation Team (Targeted Youth Support) by emailing [cyp participation team@lancashire.gov.uk](mailto:cyp participation team@lancashire.gov.uk) and you can find out more about the CYP participation group, POWAR, here: [POWAR participation group - Lancashire County Council](#)

The contacts for each area for the **Inclusion Team** are on this website page: [Inclusion Service - Lancashire County Council](#)

The **Designated Clinical Officers** are available to provide support on health matters. Contact details are on this website page: [Designated clinical officers - Lancashire County Council](#)

The **SEND Information, Advice and Support Team** is available to help children, young people and their families and you can contact them to find out where you can get the help you need, or for help filling in forms, or for help with difficulties you are having in relation to getting the support your child or young person with SEND requires: [Information, advice and support - Lancashire County Council](#)



Think SEND  
Think Voice

Improving the lives of  
children and young  
people with SEND,  
and their families

## Useful SEND Documents and Links

SEND Code of Practice: [SEND Code of Practice January 2015.pdf](#)

Quick Guide for Health: [Quick Guide: Guidance for health services for young people with SEND](#)

SEND Guide for Parents and Carers: [SEND: guide for parents and carers - GOV.UK \(www.gov.uk\)](#)

Council for Disabled Children: [Welcome to CDC | Council For Disabled Children](#)

Preparing for Adulthood: [Preparing for Adulthood | PfA | Home Page](#)

The **NHS** works in an **Integrated Care System (ICS)** called **Healthier Lancashire and South Cumbria** and you can find out more on the ICS website: [www.healthierlsc.co.uk](http://www.healthierlsc.co.uk).

There is a section on the ICS website specifically related to children and young people, called Healthy Young Minds: [Healthier Lancs and South Cumbria :: Home \(healthyyoungmindslsc.co.uk\)](http://healthyyoungmindslsc.co.uk)

If you are new to the Lancashire area, you can **find a GP** here on this website: <https://www.nhs.uk/service-search/find-a-gp>

You can find out about **schools**, or contact a school in Lancashire, using this link: [Schools - Lancashire County Council](#)

There is a **SENDCO Network** for schools that you can join if you are a SENDCO by emailing [sendco@lancashire.gov.uk](mailto:sendco@lancashire.gov.uk) and you can also subscribe to the Network by clicking on the green button on the council website: <https://www.lancashire.gov.uk/send-specialist-teaching-service/>

# Here to Help



Think SEND  
Think Voice

Improving the lives of  
children and young  
people with SEND,  
and their families