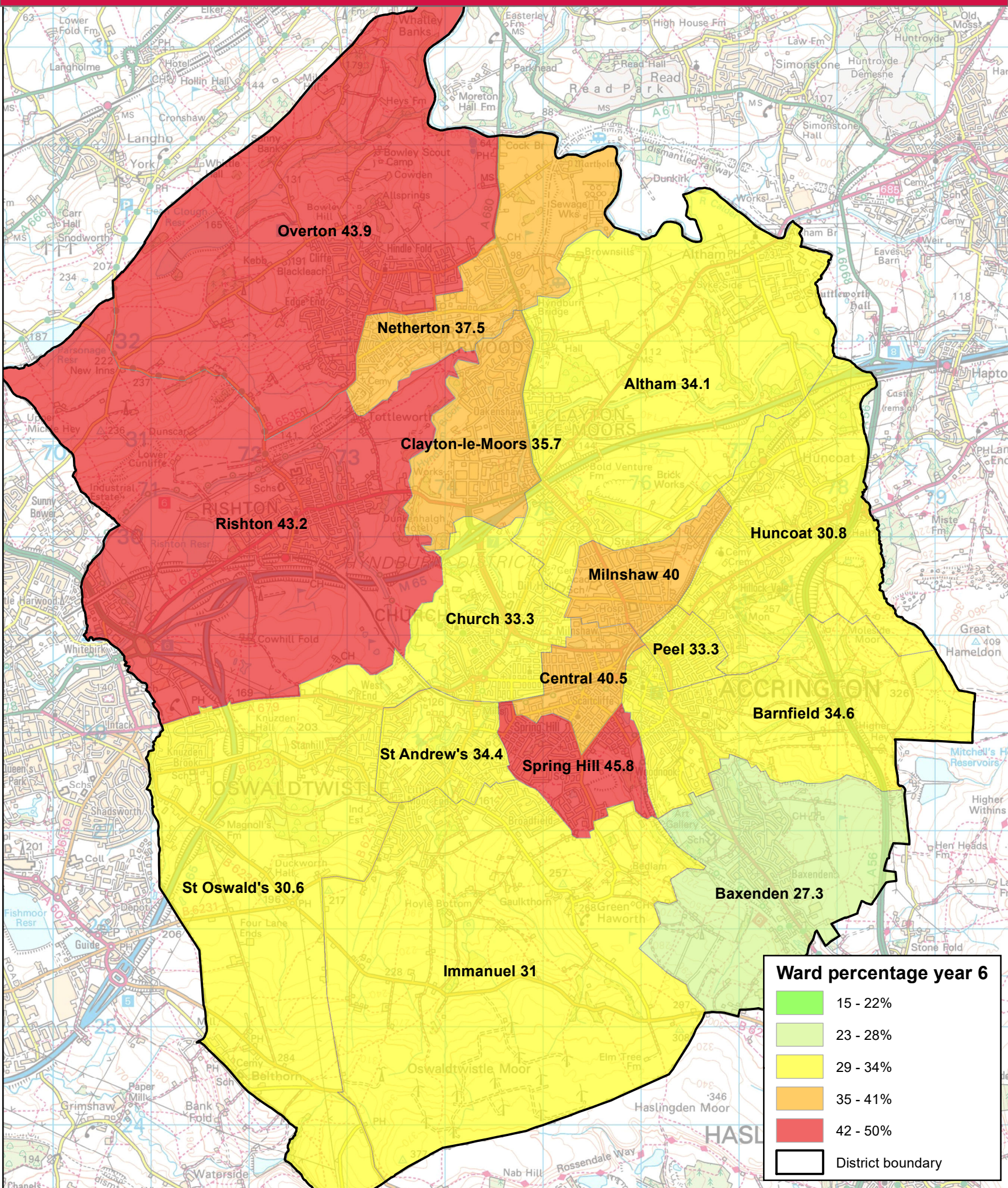


Hyndburn - percentage of year 6 children with excess weight, by ward (2017/18 - 2019/20)



This map is reproduced from Ordnance Survey material with the permission of Ordnance Survey on behalf of the controller of Her Majesty's Stationery Office (C) Crown Copyright. Unauthorised reproduction infringes Crown Copyright and may lead to prosecution or civil proceedings. Lancashire County Council Licence No.100023320.