

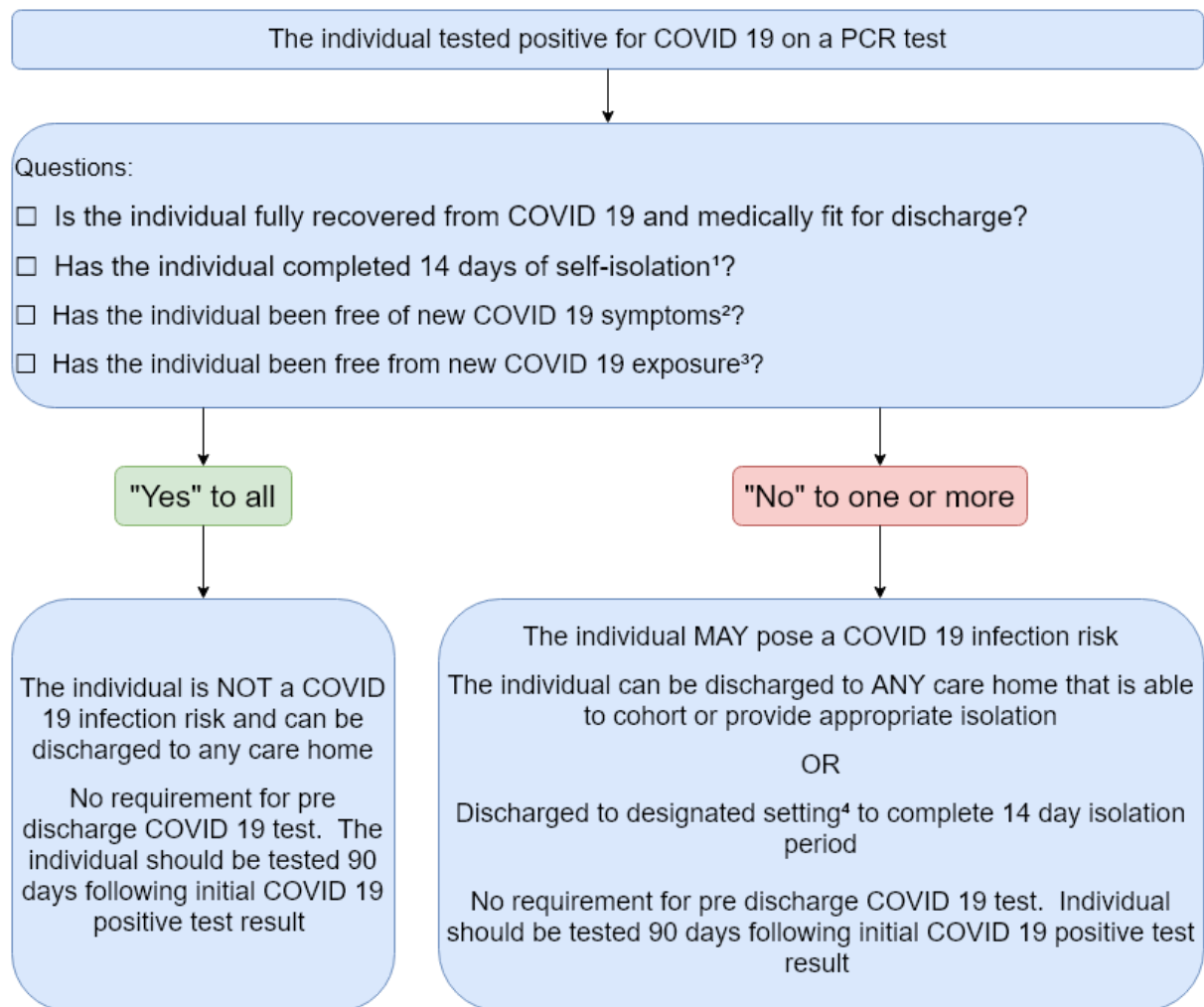
DISCHARGE INTO CARE HOMES FOR PEOPLE WHO HAVE TESTED POSITIVE FOR COVID 19: NOTE AND FLOWCHART FOR CARE HOMES.

Date of issue: 15th January 2021

This note and flowchart has been created for care homes to simplify and clarify existing [national guidance](#) on discharge into care homes (published in December), particularly in relation to people who have tested positive for COVID-19.

| Key roles of care homes | Key roles of hospitals (in the context of interacting with care homes) |
|--|--|
| Care home manager has the absolute discretion to accept or decline a resident depending on their local context and subsequently whether to isolate that individual on admission. | Hospital discharge team must not put undue pressure on a care home to accept a resident. |
| Care home manager should review the discharge summary information, in conjunction with NHS clinical support to care homes if required, to satisfy themselves that due process has been followed in the clinical assessment and decision-making. | Clinical team should ensure that the time-stamped reported COVID-19 test result of the individual is included in the discharge summary information. |
| If any information in the discharge summary information is missing or unclear, the care home manager should seek clarification from the hospital before accepting a resident. | Clinical team should provide detailed information about the clinical assessment and decision-making in the discharge summary information. This should state clearly whether or not the person is considered infectious and therefore whether or not it is necessary to discharge them to a designated setting. It should also include details of the individual's previous COVID symptomology (including date of onset of symptoms) and severity. |
| Care home manager should ensure the care home follows its own infection prevention and control procedures. | |
| Care home manager must ensure that the care home is operating within the margins of its organisation's indemnity insurance. | |

**DISCHARGE INTO CARE HOMES FOR PEOPLE WHO HAVE TESTED POSITIVE FOR COVID-19:
FLOWCHART FOR CARE HOMES**



¹ Self Isolation – [Click Here](#) for more information

² New COVID 19 symptoms – [Click here](#) for more information

³ COVID 19 Exposure – [Click here](#) for more information

⁴ Designated setting – [Click here](#) for more information

Louise Taylor
Executive Director of Adult Services and Health & Wellbeing
Lancashire County Council

Sayyed Osman
Director of Adult Services and Prevention (DASS)
Blackburn with Darwen Borough Council

Karen Smith
Director of Adult Services
Blackpool Council