

Appendix A. Cycling Route Interventions

ROUTE 1					
Scheme Description					
Scheme Reference	Location/section	Scheme type	scheme description	Synergies	High level cost (£)
R1a.1	Preston New Road from A583, Blackpool Rd junction to Lytham Road, Freckleton	New/upgraded dedicated walking / cycling facility	Replace existing on-road mandatory lane with dedicated 2 way off-road cycle track in accordance with guidance (approx 4200m)	W&C	£840,000
R1a.2	A583, Blackpool Road from Preston New Road junction to Nelson Way	New/upgraded dedicated walking / cycling facility	Upgrade existing 2 way off-road cycle track in accordance with guidance (approx 3000m)	W&C	£400,000
R1a.3	A583, Blackpool Road from Preston New Road junction to Nelson Way	Maintenance works	Route deteriorating in parts and requires some resurfacing works	W&C	£100,000
R1a.4	A583, Blackpool Road from Preston New Road junction to Nelson Way	New ped/cyc crossing	At Junction of Blackpool Road & Riversway (R3) provide dedicated crossing facility for those travelling from Blackpool Road area of Preston. Replacing current informal crossings of dual carriageway	W	£175,000
R1a.5	Riversway from Nelson Way to Portway West Strand A5072	New/upgraded dedicated walking / cycling facility	Construct new 2 way cycle track in accordance with guidance replacing existing advisory lane and section where no facility (approx 2000m)	W & C	£400,000
R1a.6	Riversway from Nelson Way to Portway West Strand A5073	Public realm / streetscape improvement off-road	Upgrade subway to link to Rylands Crescent from Riversway to be shared use. Improves residential access to route and provides alternative quiet road alternative	W&C	£30,000
R1a.7	Riversway from Nelson Way to Portway West Strand A5074	Junc upgrade to incorporate ped/cyc movements	Junction upgrade at Nelson Road to incorporate ped/cyc phase to link east/west cycle tracks	W&C	£175,000
R1a.8	Riversway from Nelson Way to Portway West Strand A5075	Junc upgrade to incorporate ped/cyc movements	Junction upgrade at Pedders Way to incorporate ped/cyc phase to link east/west cycle tracks & improve pedestrian refuge for north south movements	W&C	£175,000
R1a.9	Portway to West Strand A5072	New/upgraded dedicated walking / cycling facility	Deliver new 2 way off-road cycle track (approx 330m). Quite narrow along here so may require some reallocation of carriageway space	C	£70,000
R1a.10	West Strand (A5072)	New/upgraded dedicated walking / cycling facility	Deliver continuous off-road cycling facility along this stretch. Current infrastructure is inconsistent and piecemeal (approx 1100m)	C	£150,000
R1b.11	Nelson Way to Strand Road/Liverpool Road Junction	New ped/cyc crossing	Provide dedicated parallel crossing at junction of Nelson Way and Chain Caul Way	W&C	£28,000
R1b.12	Nelson Way to Strand Road/Liverpool Road Junction	Maintenance works	Route requires maintenance (aggressive vegetation clearance sweeping) - Regular regime needs to be agreed	W&C	£5,000
R1b.13	Nelson Way to Strand Road/Liverpool Road Junction	Public realm / streetscape improvement off-road	Route through car park requires clearer demarkation and wayfinding. Potential to provide physical segregation.	W&C	£30,000

R1b.18	Nelson Way to Strand Road/Liverpool Road Junction	Public realm / streetscape improvement off-road	Redesign rail crossing barriers at Navigation Way to prioritise ped/cyc movements outside periods of rail operation	W&C	£15,000
R1b.14	Nelson Way to Strand Road/Liverpool Road Junction	Public realm / streetscape improvement off-road	Lighting on on riverside section of path from Liverpool Road to Navigation Way (approx 1900m)	W&C	£160,000
R1b.19	Nelson Way	New ped/cyc crossing	Upgrade existing informal drop kerb crossing with central island to parallel crossing	W&C	£35,000

Scheme Description					
Scheme Reference	location/section	Scheme type	scheme description	Synergies	High level cost (£)
R2a.1	New Hall Lane from Junction with London Road to Blackpool Road junction	New/upgraded dedicated walking / cycling facility	Re-allocation of road space to deliver segregated cycle tracks along corridor to tie in with local enhancement scheme (approx 1100m)	C	£265,000
R2a.2	Blackpool Road / New Hall Lane roundabout	Junc upgrade to incorporate ped/cyc movements	Reduce the radius at roundabout to slow vehicles and improve environment for on carriageway cyclists and calm area for pedestrians. Zebra crossing added to New Hall Lane arm	W&C	£250,000
R2a.3	New Hall Lane from junction with Blackpool Road to Glenluce Drive	New/upgraded dedicated walking / cycling facility	Removal of central hatching to deliver segregated cycle tracks. Width may present some challenges (approx 600m)	W	£130,000
R2a.4	Brockholes Brow (A59) from Glenluce Drive to River Ribble crossing	New/upgraded dedicated walking / cycling facility	Deliver new 2 way off-road cycle track. Likely to be on south side and require land from Preston City Council (potential inside boundary of golf course) (approx 650m) Link in to path down to River Ribble where route will go under bridge to emerge on north side linking to existing path	W	£140,000
R2a.5	Tickled Trout Services	Public realm / streetscape improvement off-road	Junction narrowings and side road priority treatment	C	£50,000
R2a.6	A59 at Tickled Trout	New ped/cyc crossing	Dedicated ped/cyc crossing to access proposed Brockholes Brow cycle track (toucan)	W&C	£60,000
R2a.7	A59 / M6 junction	Public realm / streetscape improvement off-road	Improvements to lighting and maintenance with debris on surface and over grown making it feel unsafe	W&C	£15,000
R2a.9	A59 / M6 junction to Potter Lane	Traffic Management amendments	Pavement parking is blocking off road cycle track. Enforcement needed or physical measures (bollards) to keep this route free of vehicles.	W&C	£15,000
R2a.8	A59 from A59 / M6 junction to Whalley Road junction	New/upgraded dedicated walking / cycling facility	Deliver new 2 way off-road cycle track, extending existing track to Potter Lane. Challenges at Potter Lane where residential property. May require some land procurement or carriageway realignment. Provide verge protection to lane where possible. Should continuous lane not be feasible there may be some scope within the wooded area separating dual carriageways. This would need to incorporate additional dedicated crossing facilities	C	£300,000
R2b.1	Whalley Road from A59 junction to Salmesbury EZ site access	New/upgraded dedicated walking / cycling facility	Replace existing on-road advisory lanes with 2 way off-road cycle track. Some verge available and carrigeway space. At Salmesbury EZ access upgrade existing path width (include verge protection if possible and move lighting columns to rear of path (approx 2200m)	C	£440,000
R2b.2	Salmesbury EZ access at nr Woods Brow	New ped/cyc crossing	Crossing facility needed to access employment site	W&C	£60,000
R2b.3	Salmesbury EZ main access to Mellor Brook	New/upgraded dedicated walking / cycling facility	Extend 2 way cycle track from main site entrance to Mellor Brook access (approx 1000m)	W&C	£200,000
R2c.1	Preston New Road (A677) from A59 Junction to Salmesbury south EZ site access	New/upgraded dedicated walking / cycling facility	Deliver new 2 way off-road cycle track. May require land purchase as insufficient highway/verge width. Will also require some localized narrowings.	C	£500,000
R2d.1	Fishwick Parade Chruch Avenue to Fishwick Road	Public realm / streetscape improvement on & off-road	Environmental enhancement programme to make route more attractive as an alternative to New Hall Road (approx 1200m)	W&C	£75,000
R2d.2	Fishwick Parade Chruch Avenue to Fishwick Road	Traffic Management amendments	Investigate opportunities for filtered permeability by localised closures	W&C	£10,000
R2d.3	Off-road section from Fishwick Road to Mercer St	Public realm / streetscape improvement off-road	Environmental enhancements to improve perceptions of personal safety, lighting and desire line paths. Better signage needed	W&C	£30,000

R2d.4	Mercer St, Cranborne St, Adelaide St and Primrose Hill	Traffic Management amendments	Extension of 20mph limit to whole stretch	W&C	£15,000
R2d.5	Mercer St, Cranborne St, Adelaide St and Primrose Hill	Public realm / streetscape improvement on & off-road	Environmental enhancement programme with junction narrowings and some potential calming to make less hostile for peds/cyclists (approx 350m)	W&C	£50,000

£2,755,000

ROUTE 3				
Scheme Description				
Scheme Reference	location/section	Scheme type	scheme description	High level cost (£)
R3(a).1	Blackpool Road / New Hall Lane roundabout	Junc upgrade to incorporate ped/cyc movements	Reduce the radius at roundabout to slow vehicles and improve environment for on-road cyclists	£250,000
R3(a).2	Whole route	New/upgraded dedicated walking / cycling facility	Reduce to consistent single carriageway along enitre length & create dedicated on carriageway segregated cycle lanes (approx 8000m)	£1,920,000
R3(a).3	Ribbleton Park	New/upgraded dedicated walking / cycling facility	Upgrade East/West and North/South path to shared use. May be some challenges with width due to trees. Could use 'Please consider other path user signs' (approx E/W - 340m, N/S -210m)	£110,000
R3(a).4	Blackpool Road /Miller Road junction	Junc upgrade to incorporate ped/cyc movements	Tighten junction and provide protected cycle approach and dedicated pedestrian phases on all arms	£175,000
R3(a).5	Blackpool Road/ Ribbleton Avenue junction	Junc upgrade to incorporate ped/cyc movements	Tighten junction and provide protected cycle approaches. Widen pedestrian refuge on all arms. Remove guard railings?	£175,000
R3(a).6	Blackpool Road at Morrisons	New/upgraded dedicated walking / cycling facility	Surface and formalise desire line path through greenspace on otherside of route to Morrisons (approx 70m)	£50,000
R3(a).7	Blackpool Road at Deepdale shopping centre	Public realm / streetscape improvement off-road	Residential parking off highway needs review. At signals, potential for outbound straight ahead cycle bypass	£75,000
R3(a).8	Blackpool Road / St Gregory Rd junction	Public realm / streetscape improvement on-road	Tighten junction and provide protected cycle approach	£30,000
R3(a).9	Blackpool Road / Parkside junction	Junc upgrade to incorporate ped/cyc movements	Tighten junction to reduce crossing distance for pedestrians and turning vehicle speeds	£30,000
R3(a).10	Blackpool Road / Sir Tom Finney Way junction	Junc upgrade to incorporate ped/cyc movements	Tighten junction and provide protected cycle approaches. Widen pedestrian refuge on all arms. Remove guard railings?	£200,000
R3(a).11	Moor Park	New/upgraded dedicated walking / cycling facility	Provide off-road cycle track with new path along northern boundary of park through trees (approx 1100m)	£220,000
R3(a).12	Blackpool Road/Garstang Road junction	Junc upgrade to incorporate ped/cyc movements	Tighten junction and provide protected cycle approaches. Widen pedestrian refuge on all arms. Remove guard railings?	£200,000
R3(a).13	Blackpool Road side streets from Gartstang Road to Tom Benson Way	Traffic management amendments	Investigate contra-flow opportunites on side roads to improve local network permeability	£50,000
R3(a).14	Blackpool Road / Plungington Road junction	Junc upgrade to incorporate ped/cyc movements	Include formal pedestrian phases on all junction arms and protected cycle approaches	£175,000
R3(a).15	Blackpool Road / Brook Street	Junc upgrade to incorporate ped/cyc movements	Tighten junction and provide protected cycle approaches. Widen pedestrian refuge and investigate dedicated pedestrian provision on all arms. Remove guard railings?	£125,000
R3(a).16	Blackpool Road / Inkerman Street	Junc upgrade to incorporate ped/cyc movements	Tighten junction and provide protected cycle approaches. Widen pedestrian refuge and investigate dedicated pedestrian provision on all arms. Remove guard railings?	£125,000
R3(a).17	Blackpool Road / Lancaster Canal	New/upgraded dedicated walking / cycling facility	Investigate opportunity for dedicated canal access from Blackpool Road	£50,000
R3(a).18	Blackpool Road / Haslams Park	Public realm / streetscape improvement on-road & off-road	Improve gateway to park from Blackpool Road and investigate opportunity for realigning pedestrian crossing facility to improve access	£50,000
R3(a).19	Blackpool Road / Tulketh Road junction	Junc upgrade to incorporate ped/cyc movements	Provide protected cycle approaches. & dedicated pedestrian provision on all arms.	£125,000
R3(a).20	Blackpool Road / Pedders Lane junction	Junc upgrade to incorporate ped/cyc movements	Tighten and simplify junction, provide protected cycle approaches. & dedicated pedestrian provision on all arms.	£200,000
R3(a).21	Ashton Park	New/upgraded dedicated walking / cycling facility	Widen and upgrade Guild Walk path to shared use. Light if possible (may be oppostion as backs on to housing) (approx 600m)	£120,000

R3(a).22	Ashton Park	Junc upgrade to incorporate ped/cyc movements	Improve crossing facility of Blackpool Road to access Ashton Community Science College (toucan)	£60,000
R3(a).23	Blackpool Road / Greaves Town Lane junction	Junc upgrade to incorporate ped/cyc movements	Provide protected cycle approaches. & dedicated pedestrian provision on all arms. General improvements needed in area to improve ped/cyc access to Tesco Express	£175,000
R3(a).24	Blackpool Road / Riversway junction	New ped/cyc crossing	Provide dedicated controlled crossing facilities for pedestrians / cyclists	£200,000
R3(b).1	Stocks Road / Blackpool Road junction	Junc upgrade to incorporate ped/cyc movements	Junction treatment on Blackpool Road to aid cyclist crossing into and out of Stocks Road (protected central refuge)	£20,000
R3(b).2	Stocks Road / Roebuck junction	Public realm / streetscape improvement on-road	Parking restrictions & drop kerbs on corner to improve visibility for cyclists entry & exit of Stocks Road	£5,000
R3(b).3	Roebuck Road to Lancaster Canal	New/upgraded dedicated walking / cycling facility	Built out with drop kerb on Roebuck Road, gateway treatment to canal and replace steps with ramped access	£60,000
R3(b).4	Roebuck Road	Public realm / streetscape improvement on-road	Pavement parking an issue. Highway works to reinforce 20 and manage parking	£15,000
R3(b).5	Roebuck Road / Inkerman Street	Public realm / streetscape improvement on-road	Safer Routes to School works needed to reinforce parking restrictions, review of drop kerbs, potential to tighten junction making it simpler and reclaiming space for peds/cyclists	£30,000
R3(b).6	Inkerman Street / Eldon Street	Junc upgrade to incorporate ped/cyc movements	Junction treatment to reduce crossing distances and simplify for pedestrians / cyclists. Provide formalised crossing points	£30,000
R3(b).7	Eldon Street	Public realm / streetscape improvement on-road	Wide carriageway. Highways, environmental scheme to reinforce 20 and create more pleasant environment for walking and cycling. Could use staggered parking. Pavement parking continues to be an issue. (Bus corridor)	£100,000
R3(b).8	Eldon Street / Plungington Street junction	Junc upgrade to incorporate ped/cyc movements	Opportunity for raised table and improved crossing for pedestrians and cyclists on busy corridor. Would reinforce 20mph	£30,000
R3(b).9	Eldon Street at Eldon Primary School	Public realm / streetscape improvement on-road	Safer Routes to School works to reinforce parking restrictions, review of drop kerbs. Ensure parking restrictions on corners of all side roads.	£30,000
R3(b).10	Broughton Road / Brackenbury Road	Public realm / streetscape improvement on-road	Parking restrictions reinforced on corners with Eldon St & Ripon St	£5,000
R3(b).11	Ripon Road	Public realm / streetscape improvement on-road	Widen and protect contra-flow cycle lane approaching Garstang Road junction	£10,000
R3(b).12	Ripon Road / Garstang Road junction	New ped/cyc crossing	Move pedestrian signals more inline with Ripon Rd crossing & upgrade to toucan. Provide protected central island for more confident cyclists	£125,000
R3(b).13	Moor Park Avenue	Public realm / streetscape improvement off-road	Rationalise barriers and improve link from St Thomas' Road near Kent St. Improving access to park	£5,000
R3(b).14	Moor Park Avenue	Public realm / streetscape improvement off-road	Gateway / junction wayfinding feature where path crosses R3. Maintenance & some works to reduce puddling needed	£10,000
R3(b).15	Moor Park Avenue	Public realm / streetscape improvement off-road	Replace gate with bollard at junction with R3 to improve access for those with adapted bikes, mobility scooters etc	£5,000
R3(b).16	Moor Park Avenue / Sir Tom Finney Way (Deepdale Road) junction	New ped/cyc crossing	Provide dedicated controlled crossing for pedestrians / cyclists more inline with desire line route from Moor Park Ave. Could help manage match day access.	£60,000
R3(b).17	Deepdale Road from Moor Park Avenue to St Stephen's Road	New/upgraded dedicated walking / cycling facility	Remove central hatching and replace reclaimed space with segregated cycling facility and investigate opportunity for improved pedestrian crossing facilities from Moor Park High School (approx 130m)	£50,000
R3(b).18	St Stephen's Road at Deepdale Community Primary School	Public realm / streetscape improvement on-road	Safer Routes to School works to reinforce parking restrictions	£30,000
R3(b).19	St Stephen's Road	Public realm / streetscape improvement on-road	Reinforce parking restrictions on junctions of all side roads off St Stephen's Road	£15,000
R3(b).20	Falcoln Street	Public realm / streetscape improvement on-road	Reinforce parking restrictions on junction with St Stephen's Road and ensure parking doesn't block cycle crossing of St George's Road. Rationalise bollards	£5,000
R3(b).21	Skeffington Road	Public realm / streetscape improvement on-road	Reinforce parking restrictions and traffic calming needed to reinforce 20mph	£15,000
R3(b).23	Preston North End Ground	Wayfinding / signing improvement	Improve legibility of permissive route through club and car park	£30,000

ROUTE 4					
Scheme Description					
Scheme Reference	Location/section	Scheme type	scheme description	Synergies	High level cost
R4a.1	Ringway junction to Meadow Road	Minor Highway improvements	Improve drop kerbing transition to access toucan crossings of junction + minor design works to improve wayfinding to access route	C	£15,000
R4a.2	Meadow St	Public realm / streetscape improvement off-road	Potential for future environmental enhancement from A6 junc to St Paul's Road (approx 200m)	W&C	£50,000
R4a.3	Meadow St / St Paul's Road Junction	Junc upgrade to incorporate ped/cyc movements	Junction treatment, potential raised table and improved route signage	W&C	£30,000
R4a.4	Meadow St / Deepdale Road Junction	Junc upgrade to incorporate ped/cyc movements	Junction redesign to incorporate east/west cyclist movements from Meadow St to Peel Hall St	C	£125,000
R4a.5	Peel Hall St nr junction of Golbourne St	Public realm / streetscape improvement off-road	Remove staggered barriers (look like recent addition) and replace with bollard, resurface (machine lay) and improve transition. Ensure parking doesn't block filtered permeability. Improve signage to make cyclists aware that route continues straight ahead	W&C	£5,000
R4a.6	Peel Hall St / Deepdale Mill St junction	Wayfinding / signing improvement	Clear advance signing for route. Ensure parking enforcement keeps junction clear. Ensure Haulage depot aware of likelihood of cyclists	C	£1,000
R4a.7	Fletcher Road	Public realm / streetscape improvement off-road	Resurfacing needed. Upgrade filtered permeability to allow passage of adapted cycles. Ensure enforcement & clear signage throughout.	C	£10,000
R4a.8	Fletcher Road	Traffic management amendments	Should be contra-flow for cycling throughout	C	£1,000
R4a.9	Fletcher Road / West View junction	New/upgraded dedicated walking / cycling facility	Shorter section of linking path with bollard to access shared path on West View (approx 10m)	W&C	£10,000
R4a.10	West View	Minor highway improvements	Side road priority across dead end junction	W&C	£10,000
R4a.11	West View	Wayfinding / signing improvement	Improve signage at Morrisons junction as unclear where to go	W&C	£1,000
R4a.12	West View	New/upgraded dedicated walking / cycling facility	Widen shared path beyond as substandard width (approx 50m)	W&C	£10,000
R4a.13	West View	Junc upgrade to incorporate ped/cyc movements	Upgrade zebra crossing to parallel crossing	C	£30,000
R4a.14	West View Leisure Centre - rail path access	Public realm / streetscape improvement off-road	Remove motorcycle barriers	W&C	£5,000
R4a.15	West View Leisure Centre	Public realm / streetscape improvement off-road	Environmental enhancement scheme needed in conjunction with leisure centre to remove fencing and make this an attractive access point to the off-road route. Surfacing needed as puddling. (approx 100m)	W&C	£25,000
R4b.1	Off-road route on old railway line from West View Leisure Centre to Redscar Industrial Estate	Public realm / streetscape improvement off-road	Rationalise / remove motorcycle barriers on route, and at route access points, to allow easy passage of cyclists, wheelchair users and mobility scooters throughout whole route (across distance of 3700m)	W&C	£50,000
R4b.2	Off-road route on old railway line from West View Leisure Centre to Redscar Industrial Estate	Public realm / streetscape improvement off-road	Vegetation clearance and landscaping to improve environment (regular regime needs to be agreed) (approx 3700m will extend if new sections built)	W&C	£50,000
R4b.3	Off-road route on old railway line from West View Leisure Centre to Redscar Industrial Estate	Public realm / streetscape improvement off-road	Regular dog refuse bins on route	W&C	£10,000
R4b.4	Off-road route on old railway line from West View Leisure Centre to Redscar Industrial Estate	Maintenance works	Some surfacing / drainage works needed as frequent puddling	W&C	£70,000
R4b.5	Off-road route on old railway line from West View Leisure Centre to Redscar Industrial Estate	New/upgraded dedicated walking / cycling facility	Surface and formalise desire line path through greenspace on otherside of route to Morrisons (approx 70m)	W&C	£50,000
R4b.6	Off-road route on old railway line from West View Leisure Centre to Redscar Industrial Estate	New/upgraded dedicated walking / cycling facility	Surface and formalise desire line path from retail park opposite Morrisons (Currys, PC World & Carphone Warehouse) (approx 30m)	W&C	£30,000
R4b.7	Off-road route on old railway line from West View Leisure Centre to Redscar Industrial Estate	New/upgraded dedicated walking / cycling facility	Extension of trail along disused railway from Leisure Centre to Deepdale Mill Street and St Paul's Road (with access points at both) (approx 1300m if account for rail and Tram access)	W&C	£200,000
R4b.8	Off-road route on old railway line from West View Leisure Centre to Redscar Industrial Estate	New/upgraded dedicated walking / cycling facility	Investigate potential for link to route from Preston Greenlands Community primary (via Stuart Road or dedicated link)	W&C	£20,000
R4b.9	Off-road route on old railway line from West View Leisure Centre to Redscar Industrial Estate	Public realm / streetscape improvement off-road	Improve gateways to open up and better promote route throughout eg. at Park Close, Brookfield Park (at Fairfax Rd), Chatburn Road (some path improvements needed)	W&C	£50,000
R4b.10	Off-road route on old railway line from West View Leisure Centre to Redscar Industrial Estate	Public realm / streetscape improvement off-road	Improve access points at Garsdale Road and Sion Close	W&C	£5,000
R4b.11	Off-road route on old railway line from West View Leisure Centre to Redscar Industrial Estate	Public realm / streetscape improvement off-road	Barrier removal, environmental enhancement and gateway scheme needed (including signage) at Rothwell Crescent and Gamull Lane to open up access and better promote route	W&C	£20,000

R4b.12	Off-road route on old railway line from West View Leisure Centre to Redscar Industrial Estate	Public realm / streetscape improvement off-road	Fencing in disrepair on route after M6 crossing (approx 250m)	W&C	£5,000
R4b.13	Off-road route on old railway line from West View Leisure Centre to Redscar Industrial Estate	New/upgraded dedicated walking / cycling facility	Create new direct dedicated off-road link to new employment site just north of M6 crossing before path crosses B6242 (approx 15m)	W&C	£15,000
R4b.14	Off-road route on old railway line from West View Leisure Centre to Redscar Industrial Estate	Public realm / streetscape improvement off-road	New Gateway features to route at B6242 on both sides of highway	W&C	£15,000
R4b.15	Off-road route on old railway line from West View Leisure Centre to Redscar Industrial Estate	New/upgraded dedicated walking / cycling facility	Remove barriers and upgrade (widen) link from The Hills to the route (approx 320m)	W&C	£75,000
R4b.16	Off-road route on old railway line from West View Leisure Centre to Redscar Industrial Estate	Public realm / streetscape improvement off-road	Improve gateway to route and prevent parking at Recycling Centre	W&C	£10,000
R4c.1	Off-road route on old railway line from Redscar Industrial Estate to Longridge	New/upgraded dedicated walking / cycling facility	Extension of trail along disused railway from Redscar Industrial Estate to Grimsargh. (approx 800m)	W&C	£200,000
R4c.2	Off-road route on old railway line from Redscar Industrial Estate to Longridge	New/upgraded dedicated walking / cycling facility	Extension of trail along disused railway from Grimsargh to Longridge - linking in at Hacking Drive/Mardale (approx 2100m)	W&C	£400,000
R4c.3	Off-road route on old railway line from Redscar Industrial Estate to Longridge	New ped/cyc crossing	Crossing of B6243 Preston Road at Plough Road and linking paths	W&C	£35,000
R4d.1	St Paul's Road	Wayfinding / signing improvement	Clear route direction signage & minor works to reinforce 20mph. On street parking enforcement review	W&C	£25,000
R4d.2	Moor Park Avenue	Public realm / streetscape improvement off-road	Gateway / junction wayfinding feature where path crosses R3. Maintenance & some works to reduce puddling needed	C	£10,000
R4d.3	Moor Park	New/upgraded dedicated walking / cycling facility	Moor Park - upgrade path surface to 3m machine laid through park (approx 450m)	W&C	£100,000
R4d.4	Blackpool Road	Public realm / streetscape improvement off-road	Enhancement scheme with gateway treatment of path into park and linking Blackpool Road and Lower Park Road across Eaves Brook (approx 170m)	W&C	£30,000
R4d.5	Park Walk cycle route crossing Higher Bank Road, Lower Bank Road and Victoria Road	Traffic management amendments	Change junction priority or use build outs (speed control table with crossing) to reduce crossing distance and slow traffic	W&C	£20,000
R4d.6	Signage	Wayfinding / signing improvement	Review destinations to cover more relevant local destinations & replace stickers with more permanent & visible signs	C	£5,000
R4d.7	Watling St Road / Chapel Rd Junction	Public realm / streetscape improvement on-road	Traffic calm and simplify crossing from Chapel Road across Watling St Road to Park Walk opening up and better promoting link	W&C	£25,000
R4d.8	Eastway (B6241) to Fulwood Hall Lane	Public realm / streetscape improvement off-road	Landscaping and widen access to off-road link improving visibility.	W&C	£10,000
R4d.9	Midgery Lane to Eastway (B6241)	Minor Highway improvements	Improve transition from road to off-road link by widening stretch of drop kerb and path linking down to crossing	C	£10,000
R4d.10	Midgery Lane	Traffic management amendments	On-street parking suspension at access to Fulwood Hall Hospital	C	£5,000
R4d.11	Eastway (B6241) from Midgery Lane to Pittman Way	New/upgraded dedicated walking / cycling facility	Investigate opportunity for bi-directional off-road cycle track (approx 810m)	W&C	£200,000
R4d.12	Pittman Way from Eastway to Midgery Lane	New/upgraded dedicated walking / cycling facility	Investigate opportunity for bi-directional off-road cycle track (approx 310m)	C	£70,000

ROUTE 5					
Scheme Description					
Scheme Reference	location/section	Scheme type	scheme description	Synergies	High level cost
R5.1	Fishergate / Corporation Street junction	Minor Highway improvements	Vehicles still have priority at this junction making it difficult to negotiate on foot or by bike. Minor works needed	W&C	£10,000
R5.2	Corporation Street / Ringway junction	Minor Highway improvements	Improve drop kerbing transition to access toucan crossings of junction + minor design works to improve wayfinding/coherence to access route. Clearer signing of intended route needed to help make it more intuitive	W&C	£10,000
R5.3	Ringway	Public realm / streetscape improvement off-road	Rationalise signage to ensure full effective path width available. Clear signs to indicate shared use.	W&C	£10,000
R5.4	Ringway	New/upgraded dedicated walking / cycling facility	Path sub-standard width for shared use. Reallocate space from central refuge to widen facility	W&C	£100,000
R5.5	Ringway / Friargate junction	Minor Highway improvements	Improve drop kerbing transition to access toucan crossings of junction + minor design works to improve wayfinding to access route. Clearer signing of intended route needed.	W&C	£5,000
R5.6	Friargate from Ringway to Market Square	Traffic Management amendments	No entry except cycles on Friargate South allowing access to Market Square	C	£1,000
R5.7	Friargate	Public realm / streetscape improvement on & off-road	Limited scope as bus corridor and recent local enhancement scheme	W&C	£50,000
R5.8	Corporation St from Adelphi quarter Junction to Ringway	New/upgraded dedicated walking / cycling facility	Creation of dedicated on carriageway segregated cycle lanes (approx 630m)	C	£130,000
R5.9	Adelphi Quarter Junction	Junc upgrade to incorporate ped/cyc movements	Review junction. Ped /cyc facilities provided but not intuitive. Potential dutch style roundabout?	W&C	£900,000
R5.10	Moor Lane (Adelphi quarter junction to North Rd Junction)	New/upgraded dedicated walking / cycling facility	Creation of dedicated on carriageway segregated cycle lanes (approx 630m)	C	£150,000
R5.11	Moor Lane/Garstang Road A6 (North Rd Junction to M55 Broughton roundabout)	New/upgraded dedicated walking / cycling facility	Creation of dedicated on carriageway segregated cycle lanes (approx 3700m)	C	£890,000
R5.13	North Road / Moor Lane Junction	Junc upgrade to incorporate ped/cyc movements	Major review needed to allow continuation of segrgated lanes. Should allow northbound cycle bypass from Moor Lane, provide for southbound access to Moor Lane and southbound straight ahead bypass to North Road	W&C	£250,000
R5.14	Garstang Road / Aqueduct Steet Junction	Junc upgrade to incorporate ped/cyc movements	Include pedestrian phases & tactiles & protected cycle crossing	W&C	£125,000
R5.15	Garstang Road / Moor Park Ave Junction	Junc upgrade to incorporate ped/cyc movements	Move pedestrian signals more inline with Ripon Rd crossing & upgrade to toucan. Provide protected central island for more confident cyclists	W&C	£125,000
R5.16	Garstang Road / Blackpool Road Junction	Junc upgrade to incorporate ped/cyc movements	Include protected cycle crossings and increase size of pedestrian refuge	W&C	£200,000
R5.17	Garstang Road / Lytham Road Junction	Junc upgrade to incorporate ped/cyc movements	Include pedestrian phases and tactiles & protected cycle crossing. Increase size of central refuge. Potential for outbound left turn cycle bypass	W&C	£125,000
R5.18	Garstang Road / Black Bull Lane Junction	Junc upgrade to incorporate ped/cyc movements	Include pedestrian phases and tactiles & protected cycle crossing. And increase size of central refuge	W&C	£125,000
R5.20	Whole corridor	Junc upgrade to incorporate ped/cyc movements	Side road junction narrowing (with ped/cyc priority) along whole corridor to reduce vehicle speeds when turning off A6 and reduce pedestrian crossing distances (30 junctions)	W&C	£450,000

ROUTE 6					
Scheme Description					
Scheme Reference	Location/section	Scheme type	scheme description	Synergies	High level cost
R6a.1	Ringway from Corporation Street to Marsh Lane Link	Public realm / streetscape improvement off-road	Maintenance (sweeping and vegetation clearance) needed and regular regime thereafter. Vegetation clearance of link to open up visibility.	W&C	£10,000
R6a.2	Marsh Lane	New/upgraded dedicated walking / cycling facility	Could add kerb protection to contra-flow	C	£10,000
R6a.5	Leighton Street	Public realm / streetscape improvement on & off-road	Environmental and Highway enhancement. May be scope for protected uphill cycle lane as quite steep. Reduce speed limit to 20mph and improve signage	C	£50,000
R6a.3	Leighton Street / Pedder Street junction	Public realm / streetscape improvement on & off-road	Busy crossing of Leighton Street from University accommodation and car park. Could provide formalised or informal crossing. Improve signage for designated cycle route	W&C	£30,000
R6a.4	Leighton Street nr Tuscon Drive	Minor highway improvements	Include cycle bypass in road closure and ensure parking doesn't block	C	£15,000
R6a.6	Pedder Street / Westons junction	Public realm / streetscape improvement on & off-road	Highways Junction treatment to move parking further from junction and improve visibility. Reduce speed limit on Pedder St and surrounding roads to 20mph	W&C	£15,000
R6a.7	Westons / Priory Street junction	Wayfinding / signing improvement	Signage / wayfinding improvements	W&C	£500
R6a.8	Priory Street / Ashton Street junction	Minor highway improvements	No entry except cyclists islands are a bit tight for non-standard bicycles. Could change junction priority	C	£10,000
R6a.9	Priory Street / Carltons / Steeple View junctions	Wayfinding / signing improvement	Signage / wayfinding improvements	W&C	£500
R6a.10	Path from Steeple View to Fylde Road	Public realm / streetscape improvement on & off-road	Landscaping and minor surfacing to open up access. Add lighting on corner. Path needs regular sweeping. Informal crossing of Fleetwood St. Parking blocks link from Fleetwood St to Fylde Road, needs management (Speed control table with crossing point)	W&C	£15,000
R6a.13	Fylde Road junction	Public realm / streetscape improvement on & off-road	Needs some TLC and signals replacing. Symbols to indicate where cyclists should wait to activate crossing	W&C	£60,000
R6a.12	Aqueduct Street	New/upgraded dedicated walking / cycling facility	Create short section of dedicated protected cycle lane and clear link up to start of Lancaster Canal. Currently hidden and blocked by parked vehicles	W&C	£15,000
R6a.17	Ridley Road	Public realm / streetscape improvement on & off-road	Junction treatment to prevent parking at Roebuck Street and drop kerb to access Blackpool Road needed with parking restriction	W&C	£10,000
R6a.18	Shelley Road	Public realm / streetscape improvement off-road	Environmental and Highway enhancement. Pavement parking an issue	W&C	£10,000
R6a.21	Shelley Road / Lytham Road / Woodplumpton Road Junction	Junc upgrade to incorporate ped/cyc movements	Junction treatment needed to narrow and make easier to negotiate for pedestrians / cyclists	W&C	£25,000
R6a.22	Woodplumpton Road from Blackpool Road junction to Tom Benson Way	New/upgraded dedicated walking / cycling facility	Wide carriageway and footways. Potential scope for creation of dedicated on carriageway segregated cycle lanes. Narrow all side road junctions and have ped/cycle priority. Pavement parking an issue (approx 2700m)	W&C	£650,000
R6a.23	Woodplumpton Road / Cadley Causeway roundabout	New ped/cyc crossing	Crossing facilities needed at roundabout (zebra)	W	£35,000

R6a.24	Tag Lane / Tom Benson Way roundabout	Junc upgrade to incorporate ped/cyc movements	Need formalised controlled crossing for pedestrians / cyclists. Currently informal at busiest locations where junctions flair to dual approaches / exits	W&C	£125,000
R6a.25	Tag Lane / Tom Benson Way roundabout	Public realm / streetscape improvement off-road	Remove motorcycle barriers to access Guildwheel	W&C	£5,000
R6a.27	Cottom Hall Lane	New ped/cyc crossing	Formalise crossing of Tom Benson Way and maintain (sweeping) and sign shared use path	W&C	£35,000
R6b.1	Lancaster Canal from Aquaduct Street	Public realm / streetscape improvement off-road	Create gateway feature and open up acces to Canal to make it feel safer and promote it better. Surface and upgrade link to stairs at start of Lancaster Canal. Renew stairs and investigate potential for cycle / accessible ramp. Litter clearance and benches need renewing. Regular maintenance needs agreeing	W&C	£75,000
R6b.2	Lancaster Canal from Aquaduct Street to Woodplumpton Road	New/upgraded dedicated walking / cycling facility	Widen and surface towpath making it suitable for cycling. Remove motorcycle barriers and ramp up to bridge over access to Canal boat yard making route accessible to cycles, wheelchair users and mobility scooters.	W&C	£200,000
R6b.3	Lancaster Canal from Aquaduct Street to Woodplumpton Road	Public realm / streetscape improvement off-road	Lighting along canal route to make it accessible after dark	W&C	£90,000
R6b.4	Lancaster Canal from Aquaduct Street to Woodplumpton Road	Public realm / streetscape improvement off-road	Environmental enhancement and landscaping to open up Canal	W&C	£30,000
R6b.5	Lancaster Canal / Roebuck Street	New/upgraded dedicated walking / cycling facility	Investigate option to upgrade to ramped access to canal	W&C	£50,000
R6b.6	Blackpool Road	New/upgraded dedicated walking / cycling facility	Investigate option to provide ramped access to canal	W&C	£50,000
R6b.7	Woodplumpton Road	New/upgraded dedicated walking / cycling facility	Investigate option to upgrade to ramped access to canal	W&C	£50,000
R6b.8	Lancaster Canal from Woodplumpton Street to Hollins Grove	New/upgraded dedicated walking / cycling facility	Widen and improve surface for cycling and use by wheelchairs, mobility scooters	W&C	£120,000
R6b.9	Lancaster Canal from Woodplumpton Street to Hollins Grove	Public realm / streetscape improvement off-road	Lighting along canal route making it accessible after dark	W&C	£50,000
R6b.10	Lancaster Canal from Woodplumpton Street to Hollins Grove	Public realm / streetscape improvement off-road	Remove motorcycle barriers to access Haslam Park	W&C	£5,000
R6b.11	Lancaster Canal from Woodplumpton Street to Hollins Grove	Public realm / streetscape improvement off-road	Some safety fencing work needed at slope down to Savick Brook	W&C	£10,000
R6b.12	Hollins Grove	Public realm / streetscape improvement off-road	Improve signage from Woolplumpton Road and open up access to Lancaster Canal route with improved drop kerbs. Potential gateway feature	W&C	£15,000

ROUTE 7					
Scheme Description					
Scheme Reference	location/section	Scheme type	scheme description	Synergies	High level cost
R7a.1	Hoyles Lane / Tabley Lane junction	Junc upgrade to incorporate ped/cyc movements	Redesign junction to widen substandard width shared use path by creating chicane and shuttle working	W&C	£75,000
R7a.2	Lightfoot Lane	Maintenance works	Aggressive cutting back of vegetation to expose full effective footway width	W	£5,000
R7a.3		Public realm / streetscape improvement on & off-road	20mph along corridor and physical measures to ensure adherence	W&C	£15,000
R7a.4	Lightfoot Lane / Tom Benson Way / Walker Lane	New/upgraded dedicated walking / cycling facility	Widen links through to shared use and provide formal dedicated pedestrian / cycle crossing	W&C	£10,000
R7a.5	Sandyforth Lane from Lightfoot Lane to Lightfoot Green Lane	Public realm / streetscape improvement on & off-road	Rural lane, requires lighting and clear passing points	W&C	£90,000
R7a.6	Lightfoot Green Lane at Jacksons Quarry	Minor Highway improvements	Widen and have consistent width facility on one side moving crossing away from corner	W&C	£20,000
R7a.7	Jacksons Quarry access	Public realm / streetscape improvement on & off-road	Environmental enhancement to open up access and create more pleasant approach to Guild wheel.	W&C	£10,000
R7a.8	Path from Jacksons Quarry to Sandygate Lane	Public realm / streetscape improvement off-road	Vegetation clearance to create more open route maintenance to expose full surface	W&C	£5,000
R7a.9	Path from Sandygate Lane to Garstang Road (A6) via Broughton College	Public realm / streetscape improvement off-road	Lighting and widening of existing path	W&C	£150,000
R7a.10	D'Urton Lane from Garstang Road (A6) to Midgery Lane	Public realm / streetscape improvement on-road	Highways traffic calming throughout.	C	£15,000
R7a.11	D'Urton Lane from B6241 roundabout to Midgery Lane	Public realm / streetscape improvement on & off-road	Fast section of road. Reduce speed limit to 30mph with corresponding highway measures e.g. rumble strips, gateway feature and cyclists warning signs	C	£30,000
R7a.12	Midgery Lane	Minor Highway improvements	Replace staggered barriers & gates with bollards or increase gap to allow easy passage of non-standard bicycles or mobility scooters	W&C	£5,000
R7a.13		Public realm / streetscape improvement off-road	Lighting of whole of Midgery Lane to Sycamore Close	W&C	£115,000
R7a.14	Midgery Lane / Oliver Place Junction	Minor Highway improvements	Parking enforcement (double yellow lines). Dedicated parallel crossing or by chicane narrowing	W&C	£17,500
R7a.15	Midgery Lane / Pittman Way junction	New ped/cyc crossing	Dedicated parallel crossing or by chicane narrowing.	W&C	£17,500
R7a.16	Midgery Lane to Oakengate	New/upgraded dedicated walking / cycling facility	Surface desire line link	W&C	£17,500
R7b.1	Tom Benson Way / Eastway (B6241) from Tag Lane roundabout to Pittman Way	New/upgraded dedicated walking / cycling facility	Convert verge to dedicated 2 way off-road cycle track (challenges around the Maples & Lightfoot Green Lane. May require localised narrowing & side road priority (approx 4800m)	W&C	£970,000
R7b.2	Lightfoot Ln (B6241) / Wychnor junction	Junc upgrade to incorporate ped/cyc movements	Dependent on which side cycle route, junction may require tightening and provision of dedicated pedestrian / cycle crossing	W&C	£125,000
R7b.3	Lightfoot Ln - railway crossing	Wayfinding / signing improvement	Existing bridge would require 'Please consider other path user' signs	C	£1,000
R7b.4	Garstang Road A6 at Eastway	Junc upgrade to incorporate ped/cyc movements	Dedicated cycling phase or use underpass roundabouts will need dedicated parallel crossing	C	£125,000
R7b.5	Eastway / Longfield junction	Junc upgrade to incorporate ped/cyc movements	Junction narrowing and dedicated set back crossing	W&C	£20,000
R7b.6	Eastway / D'Urton Lane roundabout	Junc upgrade to incorporate ped/cyc movements	Roundabout need dedicated pedestrian / cycle crossings	W&C	£125,000
R7b.7	B6421 / Sherwood Way / Oliver's Place roundabout	Junc upgrade to incorporate ped/cyc movements	Roundabout need dedicated pedestrian / cycle crossings	W&C	£125,000
R7b.8	B6421 / Pittman Way roundabout	Junc upgrade to incorporate ped/cyc movements	Roundabout need dedicated pedestrian / cycle crossings link in to path proposed for R4	W&C	£125,000

ROUTE 8					
Scheme Description					
Scheme Reference	location/section	Scheme type	scheme description	Synergies	High level cost
R8a.1	Fishergate Hill / Bow Lane junction	Junc upgrade to incorporate ped/cyc movements	Provision of pedestrian crossing facilities on all arms	W&C	£60,000
R8a.2	Fishergate Hill from railway crossing (at County Hall and end of previous scheme) to River Ribble crossing	New/upgraded dedicated walking / cycling facility	Reduce outbound highway capacity to single lane and repurpose space to create dedicated on carriageway segregated cycle lanes (approx 620m)	C	£150,000
R8a.3	Fishergate Hill from Bow Lane to River Ribble crossing	Maintenance works	Surfacing needed due to damage from heavy vehicles	C	£30,000
R8a.4	Fishergate Hill from Bow Lane to River Ribble crossing	Traffic Management amendments	Allow cycling in inbound bus lane	C	£0
R8a.5	Fishergate Hill / Strand Road junction	Minor Highway improvements	Toucan crossings on all arms but don't cater for desire lines. Small scale surfacing works to resolve	W&C	£15,000
R8a.6	River Ribble Bridge to Hill Road	New/upgraded dedicated walking / cycling facility	Provision of bidirectional cycle track or dependent on capacity reduction by Penwortham bypass potentially reduce capacity to single lane and repurpose space to create dedicated on carriageway segregated lanes (approx 770m)	C	£160,000
R8a.7	Liverpool Road / Leyland Road (A59) junction	Junc upgrade to incorporate ped/cyc movements	Currently 4 phase pedestrian crossing. If cycle track on south side, rationalise crossing to reduce pedestrian / cycle waiting time	W&C	£500,000
R8a.8	Liverpool Road from Hill Road to Howick Moor Lane	New/upgraded dedicated walking / cycling facility	With capacity reduction due to Penwortham bypass repurpose road space to create on carriageway segregated cycle lanes. Reduce speed through local centre and residential area to 20mph (approx 1750m)	W&C	£430,000
R8a.9	Liverpool Road / Cop Lane junction	New ped/cyc crossing	Tighten junction. Add pedestrian phase into east/west signal crossings and protected cycle junction approach	W	£60,000
R8a.10	Liverpool Road / Howick Moor Lane junction	Public realm / streetscape improvement on-road	Gateway feature into Penwortham	W&C	£15,000
R8a.11	Liverpool Road to Hutton	Maintenance works	Existing segregated cycle track needs maintenance and regular regime thereafter (approx 1100m)	C	£15,000
R8a.12	Liverpool Road / Lindle Lane junction	Minor Highway improvements	Redesign junction entry to prioritise pedestrians / cyclists	W&C	£15,000
R8a.13	Liverpool Road / Longton Bypass at Hutton	New ped/cyc crossing	Introduce formal parallel crossings. Move 50mph speed increase to beyond crossing.	W&C	£125,000
R8a.14	Hutton - Liverpool Road from Longton Bypass to village end	Traffic Management amendments	Reduce speed limit to 20mph through village with highway traffic calming	W&C	£10,000
R8a.15	Hutton - Liverpool Road outside Hutton CofE Grammar School	Public realm / streetscape improvement on & off-road	Undertake Safer Routes to School work with school. Investigate opportunity for widening footway to push on street parking further from school + extension of parking enforcement. Look to promote opportunities for projects such as Park & stride	W&C	£50,000
R8a.16	Hutton - Liverpool Road / Moor Lane junction	Minor Highway improvements	Tighten and redesign junction to improve visibility for pedestrians and reduce crossing distances. Potential raised table or gateway feature	W&C	£15,000
R8a.17	Hutton - Moor Lane	New/upgraded dedicated walking / cycling facility	Construct footway along length of Moor Lane (approx 540m)	W	£80,000
R8a.18	Liverpool Road between Hutton and Longton	New/upgraded dedicated walking / cycling facility	Remove road centre line and introduce on road advisory lanes. Widen footway where possible to create consistent width along length. Either through cutting into verge or highway narrowing (approx 520m)	C	£100,000
R8a.19	Longton - Liverpool Road through to village centre	Traffic Management amendments	Reduce speed limit to 20mph through village with highway traffic calming, carriageway narrowing. Potential for bigger scheme at village centre.	W&C	£50,000
R8b.1	Avenham Park	Public realm / streetscape improvement off-road	Route needs more clearly defining through Park with dedicated signage & some minor path widening and opening up to improve wayfinding	W&C	£15,000

R8b.2	Riverside Road / Leyland Road Junction	Public realm / streetscape improvement on & off-road	Local enhancement scheme to improve priority and wayfinding for pedestrians / cyclists. Gateway to city.	W&C	£30,000
R8b.3	Leyland Road	New ped/cyc crossing	Provide formalised parallel crossing	W&C	£60,000
R8b.4	Shared path from Leyland Road to Golden Way	Public realm / streetscape improvement off-road	Light complete route and undertake maintenance / landscaping to open up route through fenced area. Path needs resurfacing. Widen to 3m wherever possible and reinstate unsegregated (approx 330m of lighting and 550m of path improvement)	W&C	£130,000
R8b.5	Shared path in Hurst Grange Path parallel with Golden Way	Public realm / streetscape improvement off-road	Path needs resurfacing to Cop Lane and lighting. Needs widening to 3m along section by school playing fields (approx 600m of lighting, 200m of widening and 400m of resurfacing)	W&C	£150,000
R8b.6	Bridge over Golden Way to Kingsfold	New/upgraded dedicated walking / cycling facility	Raise parapets to allow cycling, remove staggered barriers and introduce shared use ' please consider other path user signage'	C	£20,000
R8b.7	Path access at Cop Lane	Minor Highway improvements	Minor works to improve destination signage at junction and remove 'cyclists dismount' signs.	C	£1,000
R8b.8	Cop Lane signalised junction	Junc upgrade to incorporate ped/cyc movements	Central pen too small to negotiate with tag along or non-standard bicycle	W&C	£30,000
R8b.9	Cop Lane / Cromwell Ave junction	Minor Highway improvements	Needs narrowing and provision of safe transition to path and Cop Lane crossing	W&C	£15,000
R8b.10	Path from Cromwell Lane to Oak Avenue	Public realm / streetscape improvement off-road	Local enhancement. Opening up access, some low level lighting & replace concrete bollard with standard to improve visibility and access	W&C	£10,000
R8b.11	Oak Avenue / Broad Oak Lane	Wayfinding / signing improvement	Improve signage. Not visible due to hedges	C	£500
R8b.12	Blackthorne Drive close to Acorn Close	New ped/cyc crossing	Provide formalised parallel crossing to link two shared paths	W&C	£35,000
R8b.13	Path from Blackthorn Drive along Howick Moor Lane	Public realm / streetscape improvement off-road	Surface needs maintenance (clearance). Light along entire length. (approx 620m)	W&C	£62,500
R8b.14	Path from Blackthorn Drive along Howick Moor Lane	Public realm / streetscape improvement off-road	Rationalise bollards to allow easier movement of adapted cycles or mobility scooters	W&C	£1,000
R8b.15	Path from Blackthorn Drive along Howick Moor Lane	New/upgraded dedicated walking / cycling facility	Surface link through to Townlea Close (approx 40m)	W&C	£10,000
R8b.16	Path from Blackthorn Drive along Howick Moor Lane	New/upgraded dedicated walking / cycling facility	Remove staggered barriers and surface link through to Crown Lee. (approx 90m)	W&C	£500
R8b.17	Path from Blackthorn Drive along Howick Moor Lane	New/upgraded dedicated walking / cycling facility	Ensure dedicated link to Primary school either new link or through R8(b):16	W&C	£10,000
R8b.18	Howick Moor Lane / Liverpool Road junction	Minor Highway improvements	Tighten junction and upgrade with side road priority. Design currently only caters for straight ahead movements along Liverpool Road. Improve to allow better access to and from Howick Moor Lane	W&C	£15,000
R8b.19	Millbrook Road	Minor Highway improvements	Widen path at bus stop to reduce ped / cyc conflict. Side road ped / cyc priority. Path needs sweeping	W&C	£15,000
R8b.20	Cop Lane	New/upgraded dedicated walking / cycling facility	Permenant 20mph with highway traffic calming. Could remove road centre line & introduce on road advisory lanes	W&C	£10,000
R8b.21	Cop Lane / Hurst Grange Park access	Public realm / streetscape improvement on & off-road	Open up concealed access and widen footway with build out to create gateway. Could introduce formal or informal crossing. Increase gap between barriers to improve access for mobility scooters, wheelchairs and adapted cycles.	W&C	£10,000
R8b.22	Hurst Grange Park Access at Hill Road / Valley Road junc	Wayfinding / signing improvement	Replace cyclists dismount sign with 'please consider other path users'	C	£500
R8b.23	Hurst Grange Park central route	Public realm / streetscape improvement off-road	Investigate feasibility of lighting (approx 450m)	W&C	£37,500

Scheme Reference	Location/section	Scheme type	scheme description	Synergies	High level cost
R9.1	Chapel Street from Fishergate to Avenham Park	Public realm / streetscape improvement on & off-road	Gateway feature and enhancement of route from Fishergate to Avenham Park via Winckley Square to aid wayfinding and visits to route	W&C	£30,000
R9.2	Avenham Park	Public realm / streetscape improvement off-road	Provide more visible signage to guide and raise awareness of route through the Park. Widen or remove staggered barriers to make access possible to those on non-standard cycles or requiring mobility aids	W&C	£10,000
R9.3	Old railway path from Ribble Bridge to Bamber Bridge	Maintenance works	Route requires maintenance (cutting back and sweeping) and a regular regime thereafter.(approx 3300m)	W&C	£15,000
R9.4	Old railway path from Ribble Bridge to Bamber Bridge	Public realm / streetscape improvement off-road	Remove or rationalise barriers on route to allow access for non-standard cycles, mobility scooters and wheelchairs	W&C	£20,000
R9.5	Old Tramway from Ribble Bridge to Bamber Bridge	Maintenance works	Route requires maintenance (cutting back and sweeping) and a regular regime thereafter.(approx 3300m)	W&C	£15,000
R9.6	Old railway path or old Tramway	Public realm / streetscape improvement off-road	Lighting required along whole route (rail & tram both approx 3300m, additional tram link approx 1100m)	W&C	£275,000
R9.7	Linking path from rail path to old tram road	New/upgraded dedicated walking / cycling facility	Upgrade and surface (approx 180m)	W&C	£40,000
R9.8	Rail route link off to Tardy Gate at Watering Pool Lane	Public realm / streetscape improvement off-road	Environmental enhancement to open up and create a safer space	W&C	£15,000
R9.9	New development east of Watering Pool Lane	New/upgraded dedicated walking / cycling facility	Provide additional sloped access to old railway route (approx 50m)	W&C	£30,000
R9.10	Medway Close to rail route	New/upgraded dedicated walking / cycling facility	Potential additional sloped access to old railway route (approx 50m)	W&C	£30,000
R9.11	Todd Lane North	Public realm / streetscape improvement off-road	Steep approach. Investigate more gradual slope. Replace barriers with more accessible feature	W&C	£30,000
R9.12	Railway trail junction with London Way roundabout	New ped/cyc crossing	Widen & surface informal link up to roundabout and formalise crossing facilities (approx 20m)	W&C	£125,000
R9.13	Brownedge Road (B527) from London Way roundabout to Brownedge Close	New/upgraded dedicated walking / cycling facility	Widen path to create alternative link avoiding underpass (approx 200m)	C	£40,000
R9.14	Brownedge Road to Irongate	New ped/cyc crossing	Create dedicated parallel crossing off the junction removing the need to cross 4 lanes of traffic. Tighten junction at Irongate turn off to provide additional space for pedestrians and cyclists and reduce vehicle speeds	W&C	£125,000
R9.15	Brownedge Road underpass	Public realm / streetscape improvement off-road	Widen space between bollards to allow easy passage of non-standard bicycles, wheelchairs and mobility scooters	W&C	£1,000
R9.16	Brown Edge Junction	Public realm / streetscape improvement on-road	Junction narrowing and gateway to 20mph area	W&C	£15,000
R9.17	Brownedge Road (B527) junction to Station Road	Public realm / streetscape improvement on & off-road	Environmental and highways enhancement scheme to reinforce 20mph and expectation of cyclists (approx 800m)	W&C	£50,000
R9.18	Bamber Bridge Railway underpass	Public realm / streetscape improvement off-road	Environmental enhancement, landscaping and regular maintenance	W&C	£10,000
R9.19	Path parallel with railway line	New/upgraded dedicated walking / cycling facility	Surface, light and sign new link and upgrade access into Edward Street (approx 475m)	W&C	£100,000
R9.20	Quiet road route from Bampton Drive to Carr Street	Wayfinding / signing improvement	Sign quiet route and open up barriers for easy access	C	£5,000
R9.21	Quiet road route from Bampton Drive to Carr Street	Traffic Management amendments	Contra flow cycle lane Carr Street	C	£5,000

ROUTE 10					
Scheme Description					
Scheme Reference	Location/section	Scheme type	scheme description	Synergies	High level cost
R10a.1	Wheelton Lane	New/upgraded dedicated walking / cycling facility	Side road priority across junctions, widen to guidance width where possible and move lamp columns to back of footway.	W&C	£120,000
R10a.2	Wheelton Lane / Centurion Way Junction	New ped/cyc crossing	Provide crossing on Centurion Way to allow transition from shared path to segregated facilities	W&C	£60,000
R10a.3	Centurion Way / Mill Lane	New/upgraded dedicated walking / cycling facility	Surface and light track from Centurion Way to Mill Lane and up to employment site alongside River Lostock	W&C	£200,000
R10a.4	Centurion Way	New/upgraded dedicated walking / cycling facility	Creation of dedicated on carriageway segregated cycle lanes	C	£200,000
R10a.5	Centurion Way / Stanifield Lane junction	Junc upgrade to incorporate ped/cyc movements	Narrow junction where possible and provision for cyclists making turning movements.	W&C	£125,000
R10a.6	Stanifield Lane	New/upgraded dedicated walking / cycling facility	Provision of dedicated facilities. Some scope for off-road provision, requires land from Stanfield Business park west side). Some HGV traffic so ideally off-road provision. Minimal provision would be removal of centre line and provision of wide advisory lanes. Beyond A5083 turning provision on east side and new route to link into sustainable travel improvements proposed as part of Cuerden Strategic Site development.	C	£300,000
R10a.7	Farington Road (A582)	New ped/cyc crossing	New crossing needed to accomdate access to Cuerden strategic site via A582 and to provide link to new cycle route through site	W&C	£125,000
R10a.8	Farington Road (A582) / Todd Lane South junction	Minor Highway improvements	Tighten junction mouth to reduce speed of traffic exiting A582.	W&C	£15,000
R10a.9	Todd Lane South	New/upgraded dedicated walking / cycling facility	Remove road centre line and install advisory cycle lanes with some associated highway calming measures	C	£75,000
R10a.10	Todd Lane South/Brownedge Road/Todd Lane North junction	Minor Highway improvements	Tighten junction where possible and resurface across junction	W&C	£100,000
R10a.11	Todd Lane North	New/upgraded dedicated walking / cycling facility	Remove road centre line and install advisory cycle lanes. Widen footway if possible in vicinity of schools	C	£75,000
R10a.12	Todd Lane North / Old railway line junction	Public realm / streetscape improvement on & off-road	Narrow carriageway with chicane to aid access too and crossing of road for old railway path. Remove motorcycle barriers	W&C	£15,000
R10b.1	Croston Road (south)	New/upgraded dedicated walking / cycling facility	Remove road centre line and install advisory cycle lanes. Reduce speed limit to 30mph throughout	C	£150,000
R10b.2	Croston Road / Farington Road (A582) roundabout	Junc upgrade to incorporate ped/cyc movements	Provision of dedicated pedestrian cycle crossings and improvements to make route more intuitive	W&C	£175,000
R10b.3	Croston Road (north)	New/upgraded dedicated walking / cycling facility	Remove road centre line and install advisory cycle lanes.	C	£75,000
R10b.4	Croston Road / School Lane Junction	Public realm / streetscape improvement on & off-road	Narrow junction mouth and potential for Safer routes to school measures	W&C	£20,000
R10b.5	Coote Lane from Fir Trees Ave to Leyland Road	Public realm / streetscape improvement on & off-road	Side road junction narrowing and pedestrian priority, widening footways where possible. Formalise parking / enforcement	W&C	£50,000
R10b.6	Coote Lane / Leyland Road/Brownedge Road junction	Public realm / streetscape improvement on & off-road	Junction narrowings to improve environment for pedestrians and wayfinding improvements for cyclists	W&C	£75,000
R10b.7	Leigh Brow Bridge	Public realm / streetscape improvement off-road	Environmental enhancement and lighting to create more open area improving perceptions of safety	W&C	£15,000
R10b.8	Wateringpool Lane / Brownedge Road roundabout	Public realm / streetscape improvement on-road	Reduce junction approach radii and improve drop kerbs to slow vehicles and aid pedestrians and cyclists	W&C	£35,000
R10c.1	Scheme delivered by City Deal Team				

ROUTE 11					
Scheme Description					
Scheme Reference	Location/Section	Scheme type	scheme description	Synergies	High level cost
R11(a).1	Park Road from Union St to A6 Preston Street	New/upgraded dedicated walking / cycling facility	Upgrade existing on-road advisory lanes to light or fully segregated	C	£240,000
R11(a).2	A6 Preston St junction with Park Road	New ped/cyc crossing	Provide dedicated crossing for pedestrians and cyclists to access Park Road from Preston Road A6 with associated improvements to make the route clear to users.	W&C	£125,000
R11(a).3	A6 Preston Street from Park Rd junction (Chorley) to Euxton Lane roundabout	New/upgraded dedicated walking / cycling facility	Create dedicated on carriageway light segregated lanes by removal of central hatching and reallocation of carriageway space. Alternative to find previous LCC Cycle Safety scheme submitted to DfT (around 2013)	C	£250,000
R11(a).4	A6 Preston St from Euxton Lane roundabout to Four Oaks Rd roundabout at Walton Summit	New/upgraded dedicated walking / cycling facility	Reduce to consistent narrow vehicle running lanes & remove central hatching along entire length & create dedicated on carriageway light segregated lanes in either direction. Where parking needed then ensure parking protected cycle lanes. Challenging narrow bit at from Euxton Rd to Hardacre Lane (approx 5800m)	C	£1,400,000
R11(a).5	A6 Preston St from Euxton Lane roundabout to Four Oaks Rd roundabout at Walton Summit	Traffic management amendments	Reduce speed limit to consistent 30mph along entire length	W&C	£10,000
R11(a).6	A6 / Boynton Rd roundabout	Junc upgrade to incorporate ped/cyc movements	Reduce size of junction slowing vehicle speeds and making it easier to negotiate for peds/cyclists	W&C	£50,000
R11(a).7	A6 / Clayton Brook Rd roundabout	Junc upgrade to incorporate ped/cyc movements	Reduce size of junction slowing vehicle speeds and making it easier to negotiate for peds/cyclists	W&C	£50,000
R11(a).8	Four Oaks Rd / A6 roundabout	Junc upgrade to incorporate ped/cyc movements	Dedicated pedestrian / cycle crossing on Four Oaks Road arm of roundabout. Parallel crossings.	W&C	£125,000
R11(a).9	Four Oaks Rd roundabout to Walton Summit Rd roundabout	New/upgraded dedicated walking / cycling facility	Provision of 2-way cycle tracks on both sides on road. Ensure clear transition and access from Walton Summit and For Oaks Rd roundabouts	W&C	£100,000
R11(a).10	Walton Summit Rd roundabout	Junc upgrade to incorporate ped/cyc movements	Dedicated pedestrian / cycle crossing on Four Oaks Road arm of roundabout. Parallel crossings.	W&C	£125,000
R11(a).11	M6 / A6 roundabout	Junc upgrade to incorporate ped/cyc movements	Provision of dedicated ped/cyc crossings at on-slip and off-slip to M6. Likely to be toucan crossings	W&C	£125,000
R11(a).12	Church Road / B6258 / Havelock Rd Junction	New ped/cyc crossing	Provide dedicated ped/cyc crossing at this junction to improve provision for less confident cyclists. Could be parallel crossing and gateway feature as entrance to Bamber Bridge	W&C	£50,000
R11(a).13	Holme Rd / Cuerden Way through to Brownedge Rd	Public realm / streetscape improvement on & off-road	Environmental improvements to open up area and improve feelings of personal safety and natural wayfinding	W&C	£30,000
R11(b).1	Ackhurst Drive at Copperwood Way roundabout	Junc upgrade to incorporate ped/cyc movements	Dedicated pedestrian / cycle crossing from Ackhurst Drive path to Copperwood Way and across Copperwood Way. Parallel crossings.	W&C	£70,000
R11(b).2	Ackhurst Drive from Foxhole Rd to Copperwood Way roundabout	Maintenance works	Existing path needs some surface maintenance work and moving of existing lamp columns to rear of path.	C	£50,000
R11(b).3	Ackhurst Drive near to Common Bank Lane	New ped/cyc crossing	Dedicated crossing needed to provide link to existing shared use facility. Parallel crossing preferable.	W&C	£35,000
R11(b).4	Ackhurst Road from Southport Rd to Foxhole Rd B5251	New/upgraded dedicated walking / cycling facility	Widen existing footway to create shared use facility	W&C	£30,000
R11(b).5	Southport Road at Astley Park access	New ped/cyc crossing	Toucan crossing needed. Currently no facility on busy road linking into Astley Park and local network.	W&C	£60,000
R11(a).10	Walton Summit Rd roundabout	Junc upgrade to incorporate ped/cyc movements	Dedicated pedestrian / cycle crossing on Four Oaks Road arm of roundabout. Parallel crossings.	W&C	£125,000
R11(a).11	M6 / A6 roundabout	Junc upgrade to incorporate ped/cyc movements	Provision of dedicated ped/cyc crossings at on-slip and off-slip to M6. Likely to be toucan crossings	W&C	£125,000
R11(a).12	Church Road / B6258 / Havelock Rd Junction	New ped/cyc crossing	Provide dedicated ped/cyc crossing at this junction to improve provision for less confident cyclists. Could be parallel crossing and gateway feature as entrance to Bamber Bridge	W&C	£50,000
R11(a).13	Holme Rd / Cuerden Way through to Brownedge Rd	Public realm / streetscape improvement on & off-road	Environmental improvements to open up area and improve feelings of personal safety and natural wayfinding	W&C	£30,000
R11(b).1	Ackhurst Drive at Copperwood Way roundabout	Junc upgrade to incorporate ped/cyc movements	Dedicated pedestrian / cycle crossing from Ackhurst Drive path to Copperwood Way and across Copperwood Way. Parallel crossings.	W&C	£70,000
R11(b).2	Ackhurst Drive from Foxhole Rd to Copperwood Way roundabout	Maintenance works	Existing path needs some surface maintenance work and moving of existing lamp columns to rear of path.	C	£50,000
R11(b).3	Ackhurst Drive near to Common Bank Lane	New ped/cyc crossing	Dedicated crossing needed to provide link to existing shared use facility. Parallel crossing preferable.	W&C	£35,000
R11(b).4	Ackhurst Road from Southport Rd to Foxhole Rd B5251	New/upgraded dedicated walking / cycling facility	Widen existing footway to create shared use facility	W&C	£30,000
R11(b).5	Southport Road at Astley Park access	New ped/cyc crossing	Toucan crossing needed. Currently no facility on busy road linking into Astley Park and local network.	W&C	£60,000
R11(b).6	Astley Park at Hall Gate	Maintenance works	When path needs resurfacing, widen to 3m and make shared unsegregated.	W&C	£20,000
R11(b).7	Astley Park at Hall Gate	Wayfinding / signing improvement	Direction signing needs improving as unclear at this point. Remove cyclists dismount signs and replace with 'Please consider other path users'	W&C	£5,000
R11(b).8	Astley Village Shops	Public realm / streetscape improvement off-road	Minor path widening along desire line with some signing improvements	W&C	£5,000
R11(b).9	Chancery Road at Astley Village Shops	New ped/cyc crossing	Dedicated ped/cyc crossing to cater for desire line from bus stops and access to Buckshaw Primary School.	W&C	£60,000
R11(b).10	Chancery Road for entire length	New/upgraded dedicated walking / cycling facility	Side road priority crossings along entire route widen where possible to 3m and replace as cycle track or shared unsegregated path.	W&C	£300,000
R11(b).11	Chancery Road for entire length	Maintenance works	Whole route needs aggressive vegetation clearance.	W&C	£15,000
R11(b).12	Chancery Road / Euxton Lane roundabout	Junc upgrade to incorporate ped/cyc movements	Dedicated ped/cyc crossings on all arms. Roundabout has poor visibility and difficult to cross at peak times	W&C	£250,000
R11(b).13	West Way from Balshaw Lane to Euxton Lane	New/upgraded dedicated walking / cycling facility	Dedicated bi-directional cycle track using existing verge to link into paths at either end	W&C	£240,000
R11(b).15	Euxton Lane from Chancery Road to A6 Preston Road	New/upgraded dedicated walking / cycling facility	Widen substandard width shared path. Need to liaise with hospital regarding land. Move lamp columns to rear from centre of path.	W&C	£500,000
R11(b).16	Euxton Lane from Chancery Road roundabout to Buckshaw Village main road	Maintenance works	Path in poor condition in parts (south sides) and needs resurfacing. Where possible add verge separation from highway. Side road priority incorporated into works	C	£50,000
R11(b).17	Buckshaw Village main road near Townsend Drive	Wayfinding / signing improvement	Signing at bus stop inconsistent and needs review	W&C	£5,000
R11(b).18	Buckshaw Village main road roundabout	Junc upgrade to incorporate ped/cyc movements	Dedicated ped/cyc crossing on all arms to allow safe crossing at roundabout	W&C	£70,000
R11(b).19	Buckshaw Village Central Avenue	New/upgraded dedicated walking / cycling facility	Potential for new short links to village to improve permeability and access to the network	W&C	£30,000
R11(b).20	Buckshaw Village Central Avenue / Main street roundabout	Junc upgrade to incorporate ped/cyc movements	Dedicated ped/cyc crossing (parallel crossing) on all arms to allow safe crossing at roundabout	W&C	£70,000
R11(b).21	Buckshaw Village Central Avenue / Old Worden Ave roundabout	New ped/cyc crossing	Dedicated ped/cyc crossing (parallel crossing) on Old Worden Ave arm to allow safe crossing at roundabout and continue continuity of path	W&C	£35,000
R11(b).22	Dawson Lane / Waitrose depot access	New ped/cyc crossing	Dedicated ped/cyc crossing (parallel crossing) to allow safe crossing at roundabout and continue continuity of path	W&C	£60,000
R11(b).23	Dawson Lane / Wigan Road (A49) junction	Junc upgrade to incorporate ped/cyc movements	Remove advisory lane to straight on lane	C	£5,000
R11(b).24	A49 Wigan Road from Dawson Lane to A6	Traffic management amendments	Reduce speed limit to consistent 40mph (30 where possible) along entire length.	W&C	£5,000
R11(b).25	A49 Wigan Road from Dawson Lane to Lancaster Lane	New/upgraded dedicated walking / cycling facility	Revive previous LCC scheme on western verge and deliver continuous cycle track along this route. May be some scope to work within field boundary on westside. Likely to be substandard width for large lengths if path must remain on highway land	C	£250,000
R11(b).27	Lancaster Lane / A49 Wigan Road junction	Wayfinding / signing improvement	Direction signing unclear and also unclear which sections of path are shared use	C	£5,000
R11(b).28	A49 Wigan Road from Lancaster Lane to Rowan Manor	New/upgraded dedicated walking / cycling facility	Deliver continuous cycle track. Path is substandard width and should be widened where possible to conform with guidance. Side road priority treatments to create coherent route	C	£100,000
R11(b).29	Rowan Manor development roundabout	Junc upgrade to incorporate ped/cyc movements	Dedicated ped/cyc tiger or toucan crossings to create coherent / safe route	W&C	£125,000
R11(b).30	A49 Wigan Road from Rowan Manor to A6	New/upgraded dedicated walking / cycling facility	Deliver continuous cycle track along this route. May require some land acquisition. Likely to be substandard width for large	W&C	£440,000

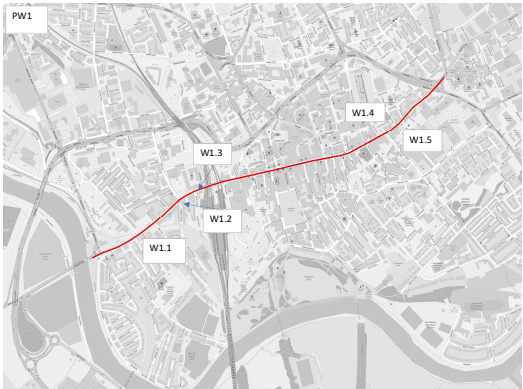
ROUTE 12					
Scheme Description					
Scheme Reference	location/section	Scheme type	scheme description	Synergies	High level cost
R12.1	B6258 from Church Road to roundabout at School Lane (Pear Tree PH)	Traffic management amendments	Reduce speed limit to 20mph along entire length through town centre	W&C	£10,000
R12.2	B6258 from Church Road to roundabout at School Lane (Pear Tree PH)	Public realm / streetscape improvement on & off-road	Environmental enhancements to help reinforce lower speed limit through town centre with junction narrowings, pedestrian side road priority and gateway & repeater features.	W&C	£200,000
R12.3	School Lane roundabout (Pear Tree PH) to Holland House Road roundabout	New/upgraded dedicated walking / cycling facility	Creation of dedicated on carriageway light segregated cycle lanes	C	£290,000
R12.4	Holland House Road roundabout to Hennel Lane roundabout	New/upgraded dedicated walking / cycling facility	Creation of dedicated on carriageway light segregated cycle lanes. Up hill most important	C	£60,000
R12.5	Victoria Road from Winery Lane to Grove Road	New/upgraded dedicated walking / cycling facility	Widen shared use path to recommended guidance if possible. Requires narrowing carriagway lanes to absolute minimum 3.25m	W&C	£50,000
R12.6	Grove Road junction & Ashbirdge Nursery access	Junc upgrade to incorporate ped/cyc movements	Tighten junction and improve surface and camber for cyclists. Investigate scope to rationalise to one junction making it simpler for ped/cyc to negotiate.	W&C	£30,000
R12.7	Ashworth Grove Junction	Minor Highway improvements	Tighten junction mouth and potential for side road priority	W&C	£15,000
R12.8	Route to car park upstream of London Road River Ribble Bridge on Guildwheel	Maintenance works	Some surfacing works needed and clearance of mud on surface. Increase gap between staggered barriers on Guild wheel	W&C	£5,000
R12.9	Path from Mete House Farm to River Ribble	Maintenance works	Some surfacing works needed although challenging as operational farm track. Need to ensure regular clearance of farm animal waste & mud	W&C	£20,000
R12.10	Path London Road River Ribble Bridge to A59 River Ribble road bridge	Public realm / streetscape improvement off-road	Investigate scope for lighting of path. May be some challenges due to operational farm and flooding. Regular maintenance to clear path necessary	W&C	£275,000
R12.11	A59 River Ribble Road Bridge	Public realm / streetscape improvement off-road	Remove barriers to aid access and from path and Guild wheel.	W&C	£5,000

ROUTE 13					
Scheme Description					
Scheme reference	Location/section	Scheme type	Scheme description	Synergies	High level cost
13.a.1	London Road to Ribbleson Place via Avenham Lane	New/upgraded dedicated walking / cycling facility	Upgrades to bidirectional cycle track along Queen Street/Avenham Lane from London Road to Knowsley Street junction on the southern side of the carriageway, and remove the grass verge. Comprehensive cycle route signage. (approx 650m)		£572,000
13.a.2			Toucan Crossings at Manchester Road junction x2		£194,400
13.a.3			Cyclists to continue on-road from Knowsley Street junction to Winkley Square/Ribblesdale Road (Proposed Winkley Square cycling route 9). Limited carriageway space (approx 405m)		N/A
13.b.2		New/upgraded dedicated walking / cycling facility	From Fishergate junction to Preston Railway Station car park (TCF proposed cycle route) implement shared pedestrian/cycle priority route (approx. 340m). This includes removal of roundabout along Butler Street, removal of right turn to Fishergate Car Park and pedestrian/central reservation (costed for in Walking audit).		293760
13.c.1	Meadow Street to Church Street via Old Vicarage Road	New/upgraded dedicated walking / cycling facility	Highlighted Crossing at Carlisle Street (Bus route entrance)		£6,192
13.c.2			Cyclists to continue on-road from Meadow Street (TCF Route ends) to Lancaster Road via Old Vicarage Road due to limited carriageway width availability. (approx. 320m)		£62,000
13.c.3			Implement traffic calming / informal streets along Lancaster Road from Old Vicarage Road to Fishergate. (approx 300m)		£259,200
13.c.4			Comprehensive cycle signage throughout the route		£10,368
13.d.1	Ringway, Corporation Street to Queen Street/London Road junction	New/upgraded dedicated walking / cycling facility	Segregated cycle super highway, along the ringway from Corporation Street to Queen Street London Road junction + comprehensive cycle route signage. (approx 1.3km). Pedestrian provision is costed for as part of W6.3 and W6.4 in the walking audit.		£1,907,464
13.d.2	Junction improvements at Church Street/Ringway junction and Queen Street/Ringway junction	Junction improvement	Two CYCLOPS junctions proposed along Ringway]		£7,000,000
13.e.1	Church Street: Lancaster Road junction to Ringway	New/upgraded dedicated walking / cycling facility	Introduce traffic calming / informal streets along Church Street, from Lancaster Road junction to ringway. Continuation of Fishergate scheme. (approx. 510m)		£440,640
13.e.2			Comprehensive cycle route signage.		£8,813
13.f.1	Frenchwood Ave/London Road junction to Church Street via Cardinal Newman College	New/upgraded dedicated walking / cycling facility	Ashworth Grove to Frenchwood Avenue upgrade existing shared walking and cycle path. (approx. 320m)		£281,600
13.f.2			Cyclists to continue on-road from Frenchwood Ave to Manchester Road. Plus comprehensive cycle route signage. (approx. 360m). Residential parking on both sides of carriageway limits scope of interventions.		N/A
13.f.3			Along Manchester Road from Frenchwood Ave junction to Halsbury Junction (approx. 210m), cyclists to continue on road due to limited scope for segregation as a result of high levels of on-street parking. Plus comprehensive cycle route signage.		£130,637
13.f.4			From Halsbury Street junction introduce informal cycle streets scheme to Queen Street junction. (approx. 260m)		£224,640
13.f.5			Cyclists to continue on-road to Church Street due to limited carriageway width availability. (approx. 290m). Links in with W3.5 walking audit costing.		£87,696
13.f.6			Comprehensive cycle signage from Queen Street to Church Street. (approx. 290m)		£5,011
13.g.1	Friargate: Victoria/Adelphi Street junction to A59 Ringway	New/upgraded dedicated walking / cycling facility	Implement traffic calming / informal streets, similar to Fishergate along Adelphi Street from Victoria Street junction to Friargate. (approx 360m). North Friargate will be fully pedestrianised, see Preston City Transport Plan.		£311,040
13.g.2			Comprehensive cycle signage throughout the route		£6,221
13.h.1	Avenham Lane to Church Street via Syke Hill-Stoney Gate		Integrate with informal street measure W4.13 within the walking audit. (approx 100m)		£30,000
13.h.2			Cycle signage throughout the pedestrian priority (informal street) route W4.13.		£1,728

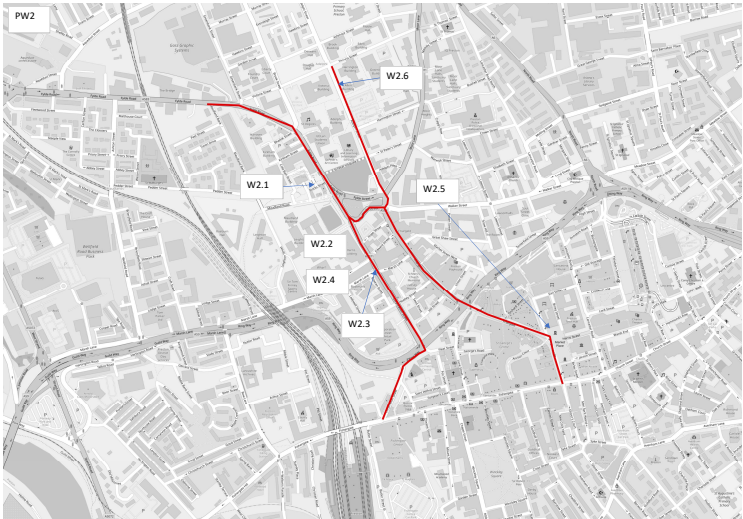
£11,833,410

Appendix B. Walking Route Interventions

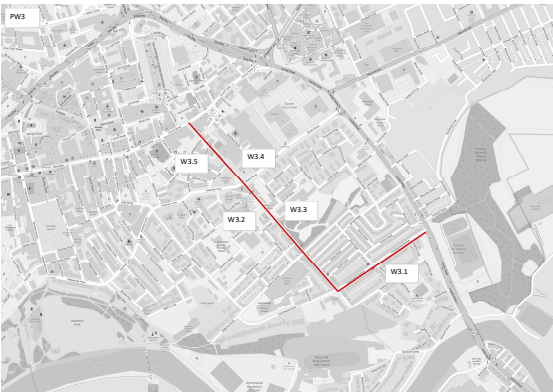
Route	Intervention ID	Intervention overview	Suggested intervention	Indicative costing (high cost)	Indicative costing (low cost)
PW1. Fishergate Hill to Ribbleton Lane/Ringway junction	W1.1	Pedestrian Priority Measures.	Implement pedestrian priority route from Liverpool Road junction to Fishergate (approx. 750m). This has been costed for in the Cycling Audit, however costings have been implemented to reflect a more accurate costing here.	£300,000	£100,000
	W1.2	Crossing Improvements	Upgrade crossings to controlled crossing at Bow Lane junction and Walton's Parade x3.	£140,400	£86,400
	W1.3	Crossing Improvements	Implement Zebra Crossing at County Hall	£46,800	£28,800
	W1.4	Pedestrian Priority Measures	Introduce pedestrian priority route along Church Street, from Lancaster Road junction to ringway (extension of Fishergate). (approx. 510m)	£24,840	£24,840
	W1.5	Crossing Improvements	Increase number of unsignalised pedestrian crossings along Church Street x3.	£38,880	£38,880
High cost:				£550,920	£278,920



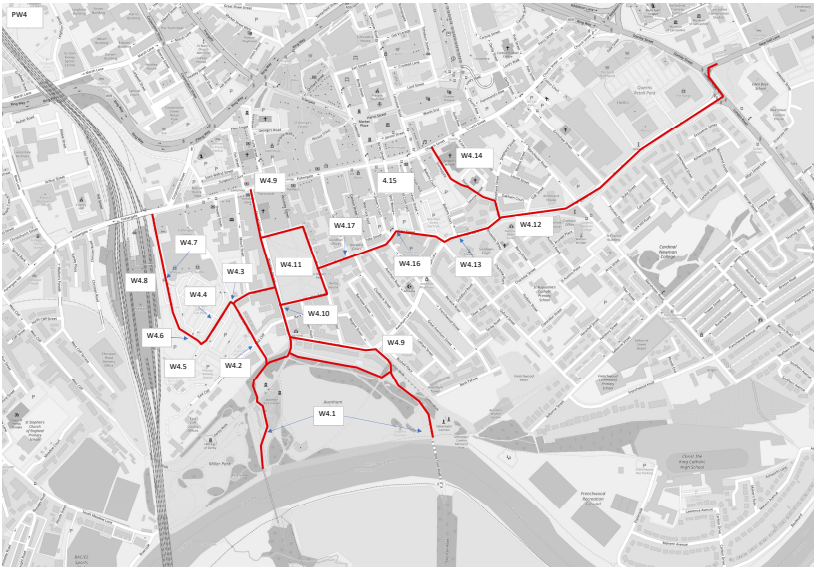
PW2. UCLAN Corridor	W2.1	Pedestrian Priority Measures.	Flyde Road to the Adelphi roundabout (UCLAN) will be undergoing a transformational change, the scheme is described in detail within the UCLAN masterplan.	N/A	N/A
	W2.2	Pedestrian Priority Measures	Improve the quality of the footway surfacing and dropped kerbing at junctions along Corporation Street, both-sides. (approx. 350m)	£7,949	£680
	W2.3	Crossing Improvements	Build out footways along Marsh Lane (Eastern/Western sides at Corporation Street junction. (approx 30m)	£3,024	£3,024
	W2.4	Traffic Calming Measures	Introduce traffic calming measures along Corporation Street from Fishergate to Adelphi roundabout.	£24,840	£24,840
	W2.5	Pedestrian Priority Measures	Introduce pedestrian priority measures from Victoria Street junction to Ringway. (approx. 725m). Only costed for measures from Victoria Street to Adelphi Roundabout (approx. 350m) since north Friargate pedestrian/cycling priority measures have been accounted for in the cycle costings. Improve wayfinding along Friargate South.	£300,000	£200,000
	W2.6	Pedestrian Priority Measures	Widen footways and introduce measures to reduce traffic flow from Aqueduct Street to Victoria Street. (approx. 325m)	£15,805	£15,805
High cost:				£351,619	£244,350



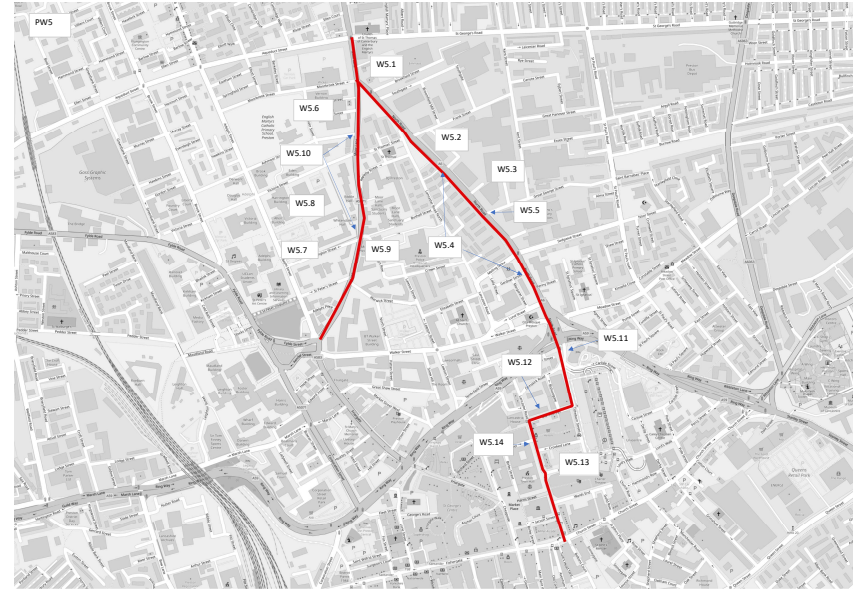
PW3. London Road to Fishergate via Cardinal Newman College	W3.1	Footway Improvements	Improve the quality of the footway through dropped kerbing at junctions and surface quality along Frenchwood Ave (both-sides). (approx. 365m)	£7,956.81	£5,942.38
	W3.2	Pedestrian Priority Measures	Implement pedestrian priority measures along Manchester Road in proximity to Cardinal Newman College. (approx. 260m)	£24,840	£24,840
	W3.3	Public Realm Improvements	Public realm improvements around Cardinal Newman College to promote safety and access.	£2,851.20	£2,376.00
	W3.4	Crossing Improvement	Upgrade Queen Street/Manchester Road junction to add toucan crossing on southern arm, and priority crossing on other arms.	£150,192.00	£114,192.00
	W3.5	Footway Improvements	Implement pedestrian priority route along Manchester Road, from Queen Street junction to Church Street, measures should follow similar to those posed along Manchester Road. (approx 290m)	£24,840.00	£24,840.00
High cost:				£210,688	£179,496
Low cost:					



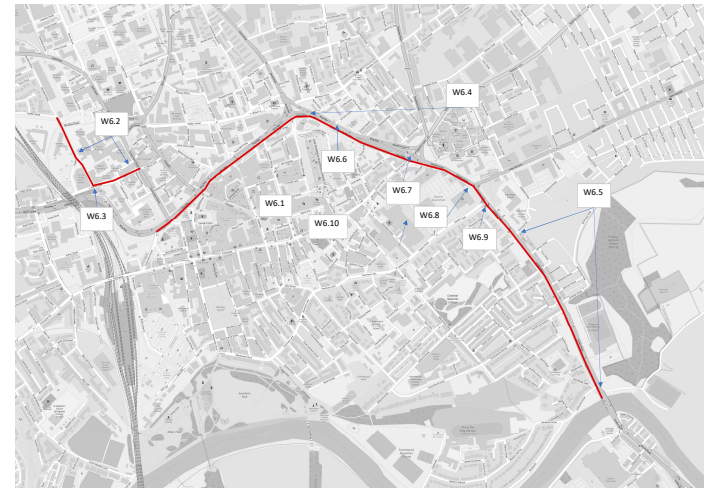
PW4. South to East Corridor	W4.1	Public Realm Improvements	Consider improving public realm/lighting of route throughout Anney Park, Old Tram Bridge to Ribblesdale Road. (approx. 400m)	£33,120	£33,120
	W4.2	Pedestrian Priority Measures	Drop kerbs at East Cliff/East Cliff Road junction to improve pedestrian access along East Cliff Road. (Consider Highlighted junction crossing)	£6,192.00	£6,192.00
	W4.3	Crossing Improvements	At East Cliff Road/Garden Street/Fishergate car park, drop kerbs at the junction (Car Park entrance) and remove bollards. Consider upgrading zebra crossing to parallel crossing to provide access through car park.	£8,784	£8,136
	W4.4	Footway Improvements	From East Cliff Road/Garden Street/Fishergate car park entrance build out footway adjacent to car park, northern side to Butler Street. (approx. 120m)	£10,080.00	£10,080.00
	W4.5	Crossing Improvements	Redesign Butler Street junction to remove mini roundabout and build out footways at junction. Add in zebra crossing point at Butler Street arm (North-side).	£58,104.00	£40,104.00
	W4.6	Pedestrian Priority Measures	Remove right turn into Fishergate car park and remove pedestrian island/central reservation.	£49,392.00	£49,392.00
	W4.7	Crossing Improvements	Implement signalised crossing from Fishergate Car Park crossing Butler Street to Preston Railway Station East side entrance.	£89,280	£72,720
	W4.8	Pedestrian Priority Measures	Implement shared pedestrian/cycling priority route along Butler Street from Preston Rail Station car park to Fishergate junction. (approx. 340m)	£84,211.20	£51,408.00
	W4.9	Pedestrian Priority Measures	Implement pedestrian priority route (similar to that along Fishergate) from Ribblesdale Place/Avenham Park entrance to Fishergate. (approx 360m)	£311,040	£207,360
	W4.10	Crossing Improvements	Implement Zebra crossing at Winkley Square/Ribblesdale junction.	£46,800	£28,800
	W4.11	Traffic calming measures	Traffic calming measures to reduce on-street parking along Winkley Square.	£24,840	£24,840
	W4.12	Crossing Improvements	Increase number of unsignalised pedestrian crossing provisions along Avenham Lane x3.	£38,880	£38,880
	W4.13	Crossing Improvements	Implement signalised crossing outside Avenham Health Centre/Syke Hill junction.	£89,280	£72,720
	W4.14	Footway Improvements	Implement pedestrian priority measures along Syke Hill and Stonegate, from Avenham Lane to Church Street.	£24,840	£24,840
	W4.15	Footway Improvements	Improvements to footway quality through drop kerbing along North side of Syke Street. (approx. 130m)	£7,776.00	£5,832.00
	W4.16	Crossing Improvements	Syke Street/Glover Street junction crossing requires a highlighted junction crossing, to improve pedestrian access along Syke Street.	£6,192	£6,192
	W4.17	Footway Improvements	Improvements to drop kerbing at junctions along both sides of Cross Street required. (approx. 170m)	£6,480.00	£4,860.00
High cost:				£895,291	£685,476
Low cost:					



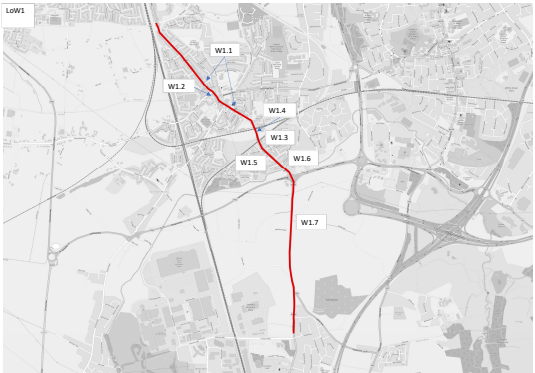
PWS. Northern Corridor	WS.1	Junction Improvements	Large scale junction redesign at A6/Moor Lane to accommodate pedestrian movements.	£1,180,800	£403,200
	WS.2	Footway Improvements	Improve quality of footway along A6 through dropped kerbing and surface quality improvements, both sides of the carriageway. (approx. 780m)	£213,926.40	£133,488.00
	WS.3	Traffic Calming Measures	Traffic calming measures to reduce traffic flow along A6. (approx. 780m)	£16,200	£11,376
	WS.4	Crossing Improvements	Upgrade pedestrian islands to signalled crossings x2 along A6.	£178,560	£145,440
	WS.5	Crossing Improvements	Consider implementing puffin crossing on east and western arm of Sedgwick Street/A6 junction.	£178,560	£145,440
	WS.6	Footway Improvements	Improve footway quality of Moor Lane, through dropped kerbing at junctions - bothsides. (approx. 750m)	£20,736	£15,552
	WS.7	Traffic calming measures	Traffic calming measures to reduce traffic flow along Moor Lane. (approx. 750m)	£24,840	£24,840
	WS.8	Crossing Improvements	Increase number of unsignalised pedestrian provisions along Moor Lane.	£51,840	£51,840
	WS.9	Crossing Improvements	Implement highlighted crossings for pedestrians on the eastern side of the carriageway along Moor Lane x5.	£30,960	£30,960
	WS.10	Traffic Management measures	Traffic management measures to reduce on-street parking along Moor Lane.	£7,704	£7,704
	WS.11	Crossing Improvements	Parallel Crossing at Carlisle Street. (Bus Station)	£46,800	£46,800
	WS.12	Footway Improvements	Build out footway along Old Vicarage Road/Lancaster Gate junction. (approx. 10m)	£5,040	£5,040
	WS.13	Pedestrian Priority Measurements	Pedestrian priority route along Lancaster Road. (approx. 300m)	£24,840	£24,840
	WS.14	Public Realm Improvements	Removal of bollards and Street signage outside the Market Hall and along Lancaster Road.	£1,000	£500
			High cost:	Low cost:	
			£1,981,806	£1,047,020	



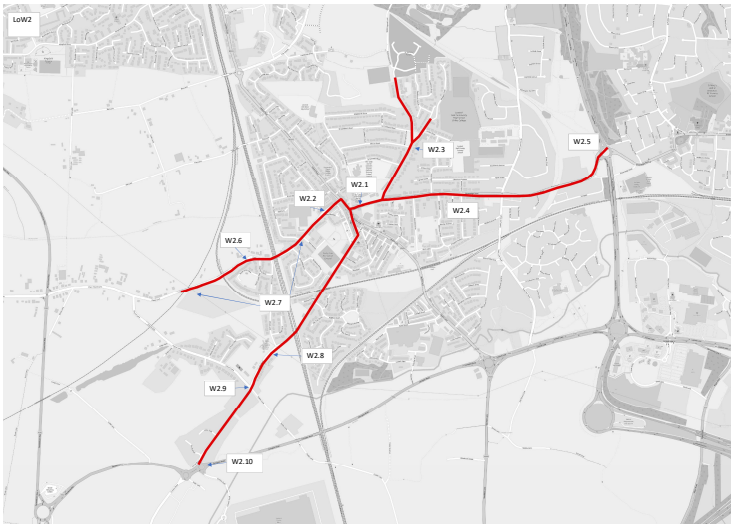
PWS Ringway Corridor	W6.1	Pedestrian Priority Measures	Remove central reservation throughout the Ringway and implement pedestrian priority measurements similar to that of the A6 Salford	£24,840	£24,840
	W6.2	Footway Improvements	Improve footway quality along Leighton Street from Pedder Street to Corporation Street via Marsh Lane, West-side. (approx. 150m)	£37,152	£22,680
	W6.3	Crossing Improvements	Implement highlighted crossing at Leighton Street/Marsh Lane junction to provide access to Corporation Street/Town centre.	£6,192	£6,192
	W6.4	Footway Improvements	Widen footway along Ringway between A6/A59 junction to Primrose Hill junction, both sides. (approx. 1000m)	£60,480	£60,480
	W6.5	Footway Improvements	Widen footway along Ringway between Primrose Hill junction to Ashworthgrove junction, east into grass verge where can, western-side. (approx. 650m)	£80,640	£80,640
	W6.6	Crossing Improvements	Cost for a grade A junction crossing at St Pauls Square junction.	£388,800	£316,800
	W6.7	Crossing Improvements	Remodel Preston HMP junction. Cyclops track junction required.	£1,180,800	£403,200
	W6.8	Crossing Improvements	Remodel and consider junction redesign at A59/New Hall Lane junction	£1,180,800	£403,200
	W6.9	Crossing Improvements	Upgrade Queen Street junction, controlled crossings on each arm x2.	£93,600	£57,600
	W6.10	Traffic Management measures	Traffic calming measures along the ringway to reduce speeds and traffic flow. (approx. 2.4 km)	£24,840	£24,840
				High cost:	Low cost:
			£3,078,144	£1,400,672	



Route	Intervention ID	Intervention overview	Suggested intervention	Indicative costing (high cost)	Indicative costing (low cost)
LoW1: North to South Route	W1.1	Pedestrian Priority Measures	Implement pedestrian priority zone along Leyland Road from Harold Terrace to Jubilee Road widening footway widths, reducing speeds and increasing crossing provision (approx. 200m). Costings align with those coded in the cycling audit Route 10b.6.	£172,800	£115,200
	W1.2		Add puffin crossing on Browneidge Road arm of Browneidge Road/Leyland Road junction; with footway build outs incorporated within W1.1	£97,200.00	£79,200.00
	W1.3	Crossing Improvements	Increase number of unsignalised crossing points along Watkins Lane x2	£25,920.00	£25,920.00
	W1.4	Footway Improvements	Resurface disabled access to Lostock Hall Rail Station and add highlighted crossing from footway (approx. 200m)	£55,728.00	£36,432.00
	W1.5	Traffic Management	Traffic calming measures to reduce on-street parking along Watkins Lane.	£24,840.00	£24,840.00
	W1.6		Improve footway quality along Watkins Lane, through improvements to dropped kerbing at junctions. Both sides. (approx. 300m)	£7,776.00	£5,832.00
	W1.7	Traffic Management	Traffic calming measures along Stanfield Lane to reduce speeds.	£24,840.00	£24,840.00
High cost:				£409,304	£312,264



LoW2: East to Western Routes	W2.1	Footway Improvements	Widen footways along Browneidge Road on the northern side of the carriageway, from Leyland Road junction. (approx 20m)	£4,953.60	£3,024
	W2.2	Footway Improvements	Widen footways along Code Lane from Leyland Road junction, both sides (approx 20m).	£3,520.00	£3,520.00
	W2.3	Crossing Improvements	Introduce signalised/zebra crossing along Wateringpool Lane	£46,800.00	£28,800.00
	W2.4	Crossing Improvements	Increase number of unsignalised pedestrian crossings along Browneidge Road x4	£51,840.00	£51,840.00
	W2.5	Junction Improvements	Introduce controlled crossings at Browneidge Road arm and A6 North arm at Londo Way (A6) roundabout.	£93,600.00	£57,600.00
	W2.6	Crossing Improvements	Introduce unsignalised crossing along Code Lane after Charnock Moss Roundabout	£12,960.00	£12,960.00
	W2.7	Footway Improvements	Improve quality of footway along Code Lane, through dropped kerbing at junctions, from Pix Tree Ave to Church Lane junction (approx 920m)	£5,184.00	£3,888.00
	W2.8		Introduce zebra crossing outside Farington Moss Primary School along Croston Road	£46,800.00	£28,800.00
	W2.9	Crossing Improvements	Upgrade Church Lane unsignalised crossing point.	£89,280.00	£72,720.00
	W2.10	Junction Improvements	Croston Road/A582 roundabout, upgrade to improve pedestrianisation of roundabout.	£175,000.00	£175,000.00
	W2.11	Footway Improvements	Improvements to footway quality along Waterington Lane, through improving surface quality and dropped kerbing at junctions between Browneidge Roundabout to Doodstone Nook. (approx. 310m)	£3,888.00	£2,916.00
High cost:				£592,824	£440,608



LoW3: Todd Lane to North Quaden	W3.1	Crossing Improvement	Introduce x2 Zebra crossings or signalised crossings at Lostock Hall Community High School.	£93,600	£57,600
	W3.2		Improve footway quality along Todd Lane, through dropping kerbs and improving surface quality at junctions. (1.130m)	£12,960.00	£9,720.00
	W3.3	Crossing Improvement	At Todd Lane North/Browneidge Road/Todd Lane South junction build out footway where possible and resurface footways.	£100,000	£100,000
	W3.4	Footway Improvements	Build out footway from Railway Bridge to Townswey junction Todd Lane South (utilise grass verge) approx 175m.	£20,160.00	£20,160.00
	W3.5	Crossing Improvement	Upgrade A6 Todd Lane junction to puffin crossing	£89,280.00	£72,720.00
	W3.6	Crossing Improvement	Increase number of unsignalised crossing points along Todd Lane South x3	£38,880.00	£38,880.00
	W3.7	Crossing Improvement	Upgrade crossing provisions at A6 junction and A49 (Wigan Road) junction (Southside) to accommodate for pedestrians and cyclists. x2 controlled crossings.	£93,600.00	£57,600.00
High cost:				£446,480	£356,680

