

# Weekly update for coronavirus figures in the county

Wednesday 15 July 2020

## How is coronavirus affecting people in Lancashire?

This is a weekly bulletin produced by the Lancashire Resilience Forum with the latest figures on the number of coronavirus-related cases and deaths in the county, as well as figures at a unitary and district level.

It also shows how Lancashire compares to other areas of the country.



# Cumulative number of lab-confirmed cases under pillar 1 and pillar 2 up to 12 July

LANCASHIRE

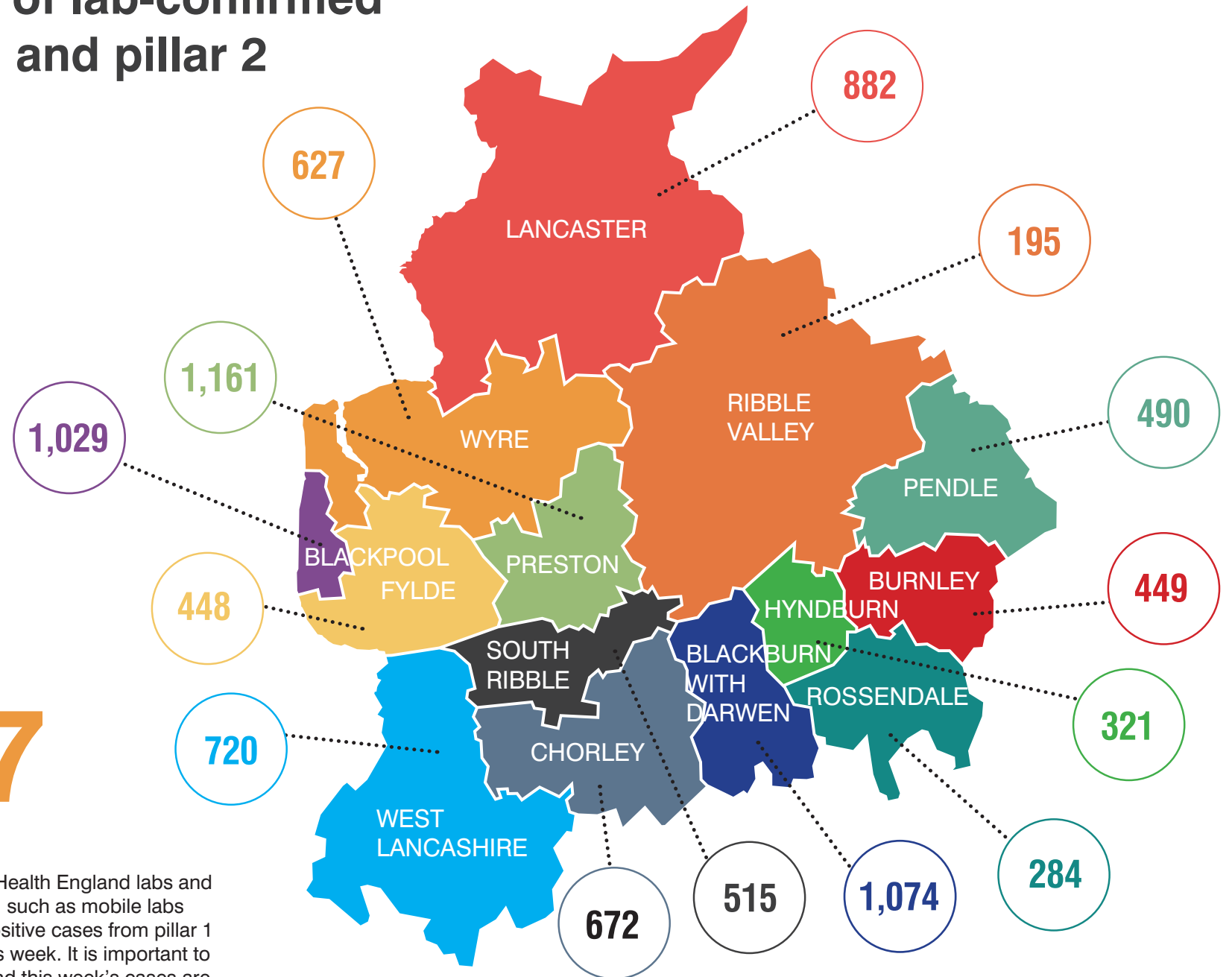
8,867

NORTH WEST

43,544

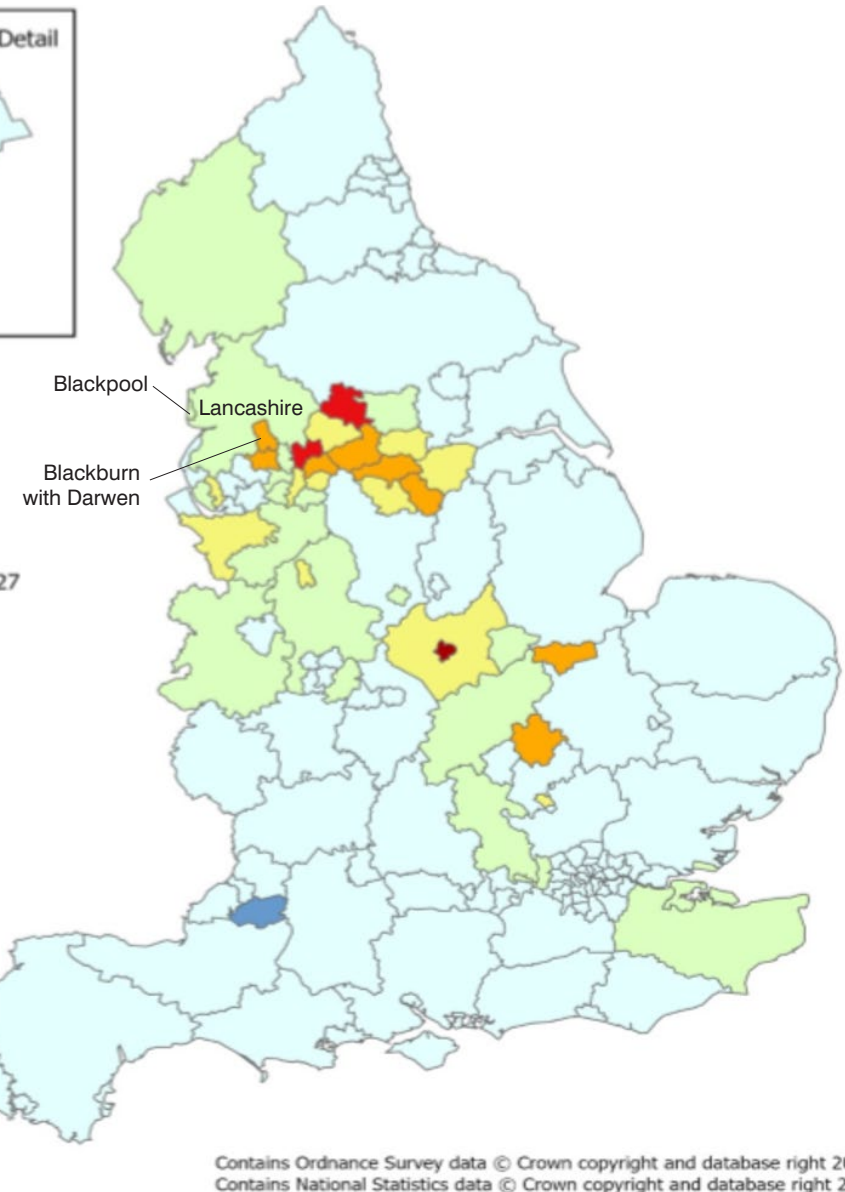
ENGLAND

250,007



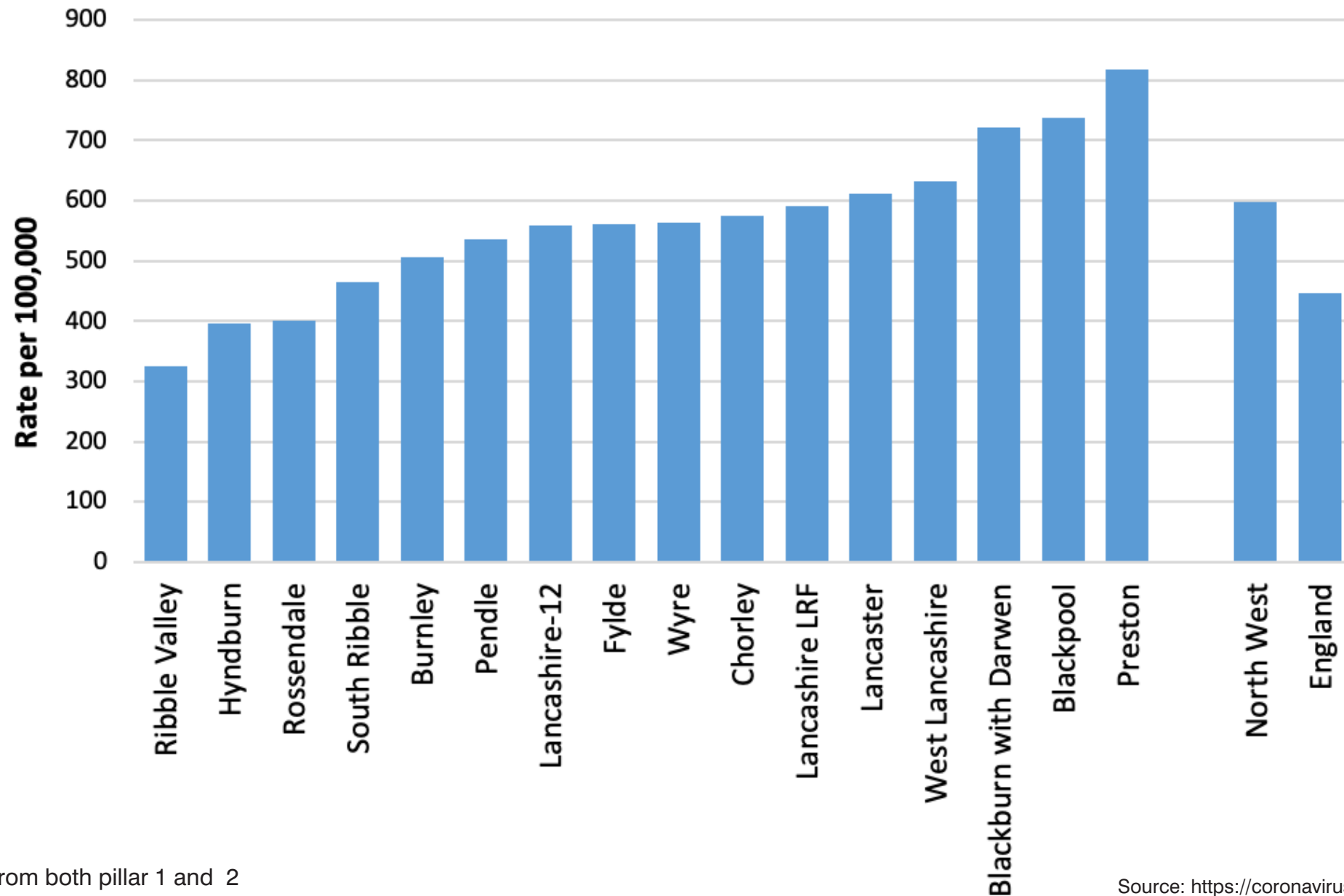
These figures are from tests carried out in Public Health England labs and in the NHS (Pillar 1) and from other testing routes, such as mobile labs (Pillar 2). 24 June and 1 July bulletins included positive cases from pillar 1 only, hence the counts are lower than they are this week. It is important to note that the cases haven't suddenly increased and this week's cases are based on both pillars.

# Weekly rate of Covid-19 cases per 100,000 population tested under pillar 1 and pillar 2 (Week ending 5 July)



These figures are from tests carried out in Public Health England labs and in the NHS (Pillar 1) and from other testing routes, such as mobile labs (Pillar 2). 24 June and 1 July bulletins included positive cases from pillar 1 only, hence the counts are lower than they are this week. It is important to note that the cases haven't suddenly increased and this week's cases are based on both pillars.

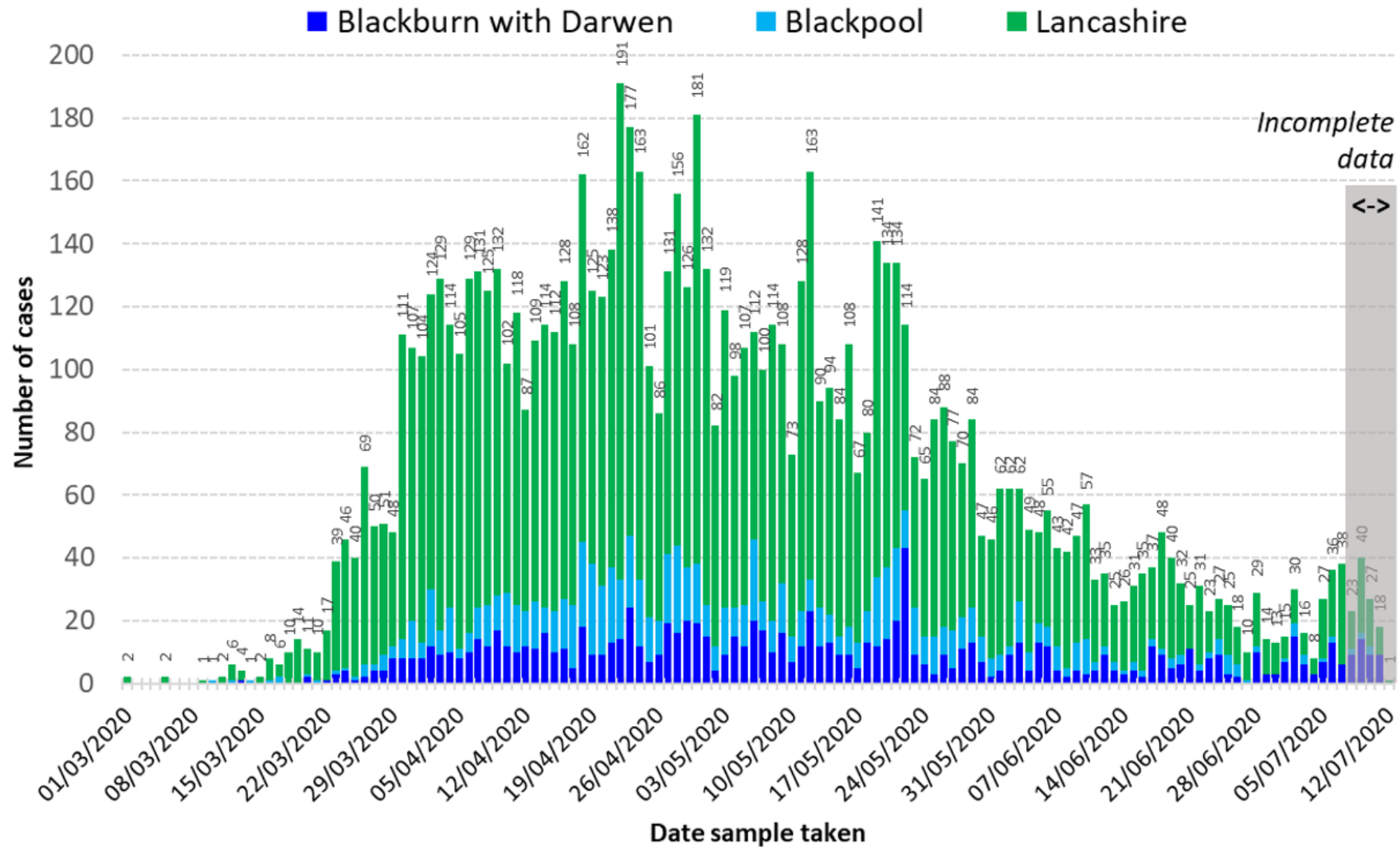
## Cumulative lab-confirmed cases up to 12 July, rate per 100,000



Cases are from both pillar 1 and 2

Source: <https://coronavirus.data.gov.uk>

# Daily pillar 1 and pillar 2 lab-confirmed cases to 12 July

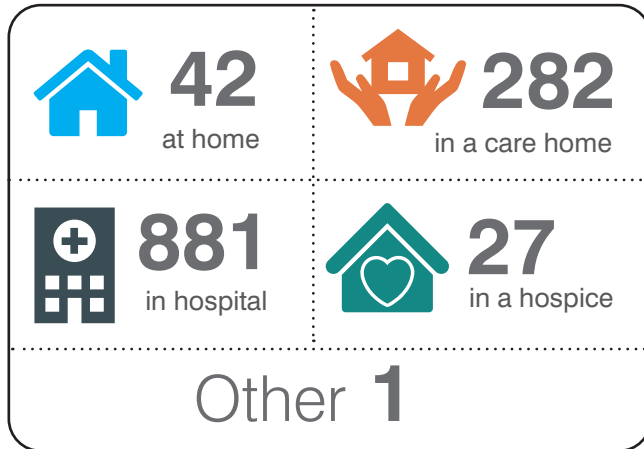


Positive tests are counted on the day a sample was taken. But this data is only updated when results are known. This will affect the greyed-out column in the chart.

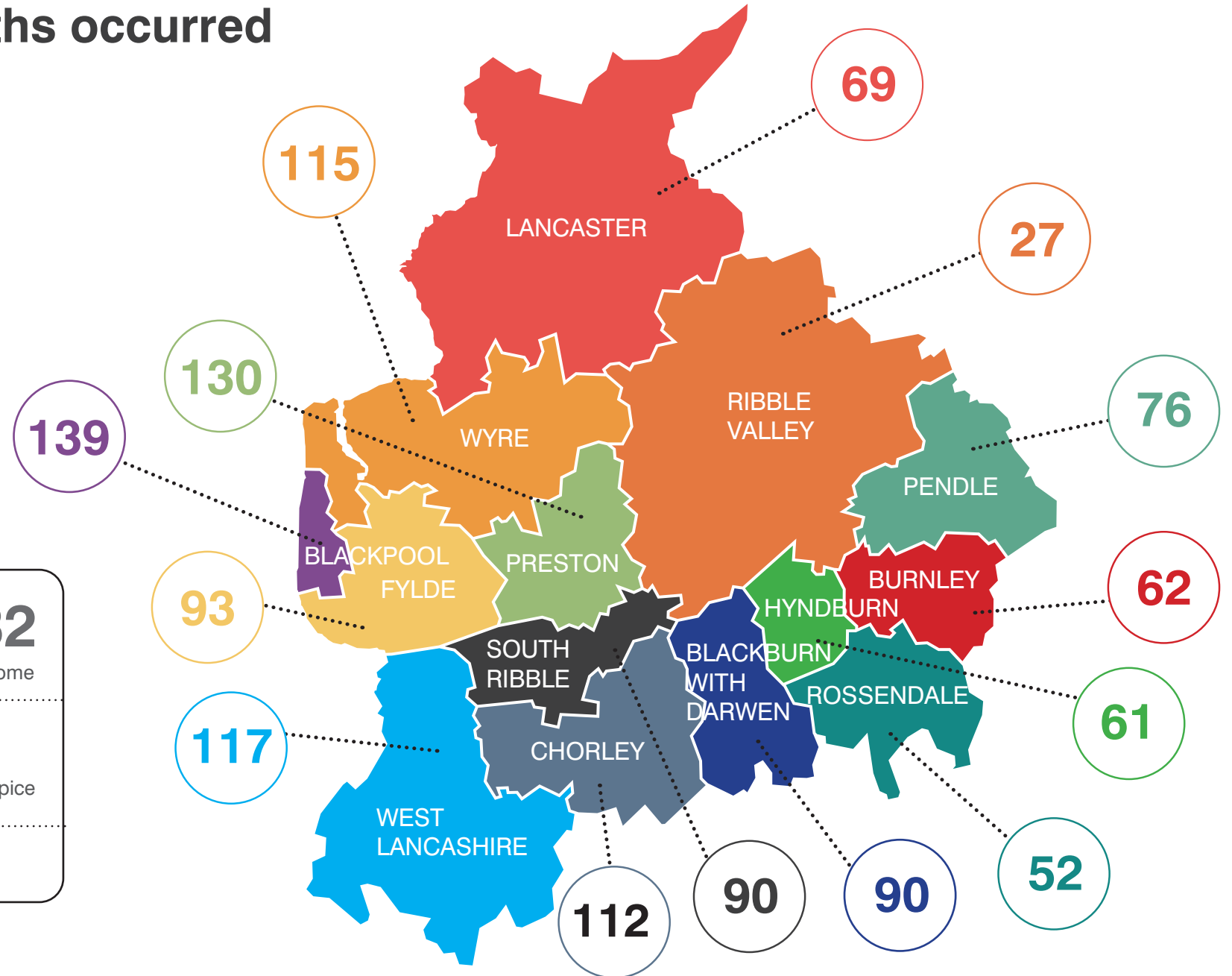
Source: <https://coronavirus.data.gov.uk>  
 These figures are from tests carried out in Public Health England labs/NHS (Pillar 1) and other testing routes, such as mobile labs (Pillar 2).

# COVID-related deaths occurred up to 3 July

## LANCASHIRE

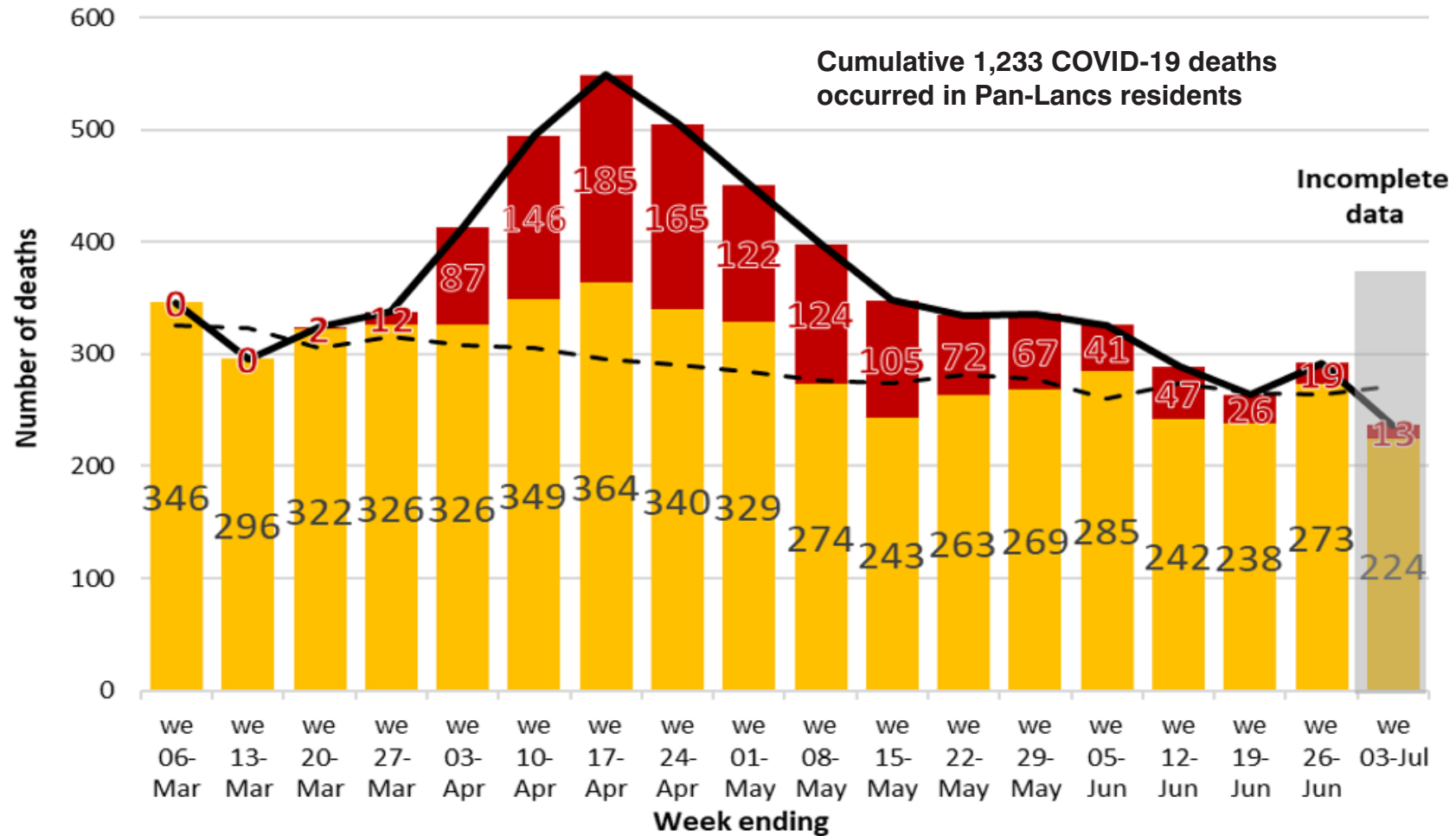


**TOTAL 1,233**



Source: Office for National Statistics (ONS)  
These figures show Covid-related deaths that occurred up to 3 July but were registered up to 11 July

# Weekly deaths occurring up to 3 July, compared with the five-year weekly average

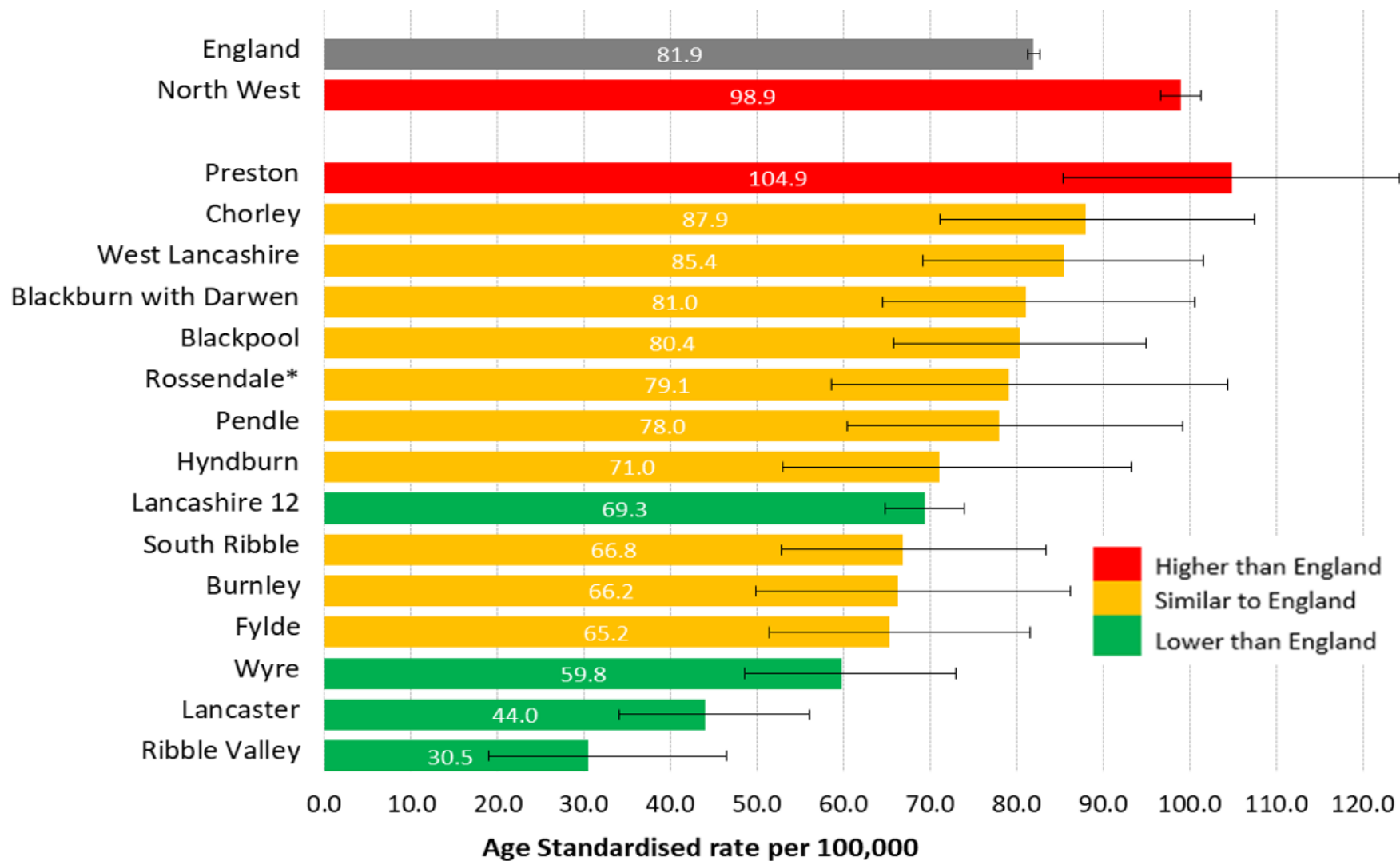


Non-Covid-19  
Total deaths

Covid-19

Weekly average (2014 - 2018)

# COVID-19 mortality rate, all persons 1 March to 31 May 2020, rate per 100,000





# Help share our messages!

Each week we produce a [statistical bulletin](#) to show how coronavirus is affecting Lancashire.

Access our [range of resources](#) to share on social media to encourage Lancashire people to play their part to combat coronavirus.

Find out more about the [LancsTogether campaign](#) and what you can do to take part.

We are all working together in Lancashire to combat coronavirus.

