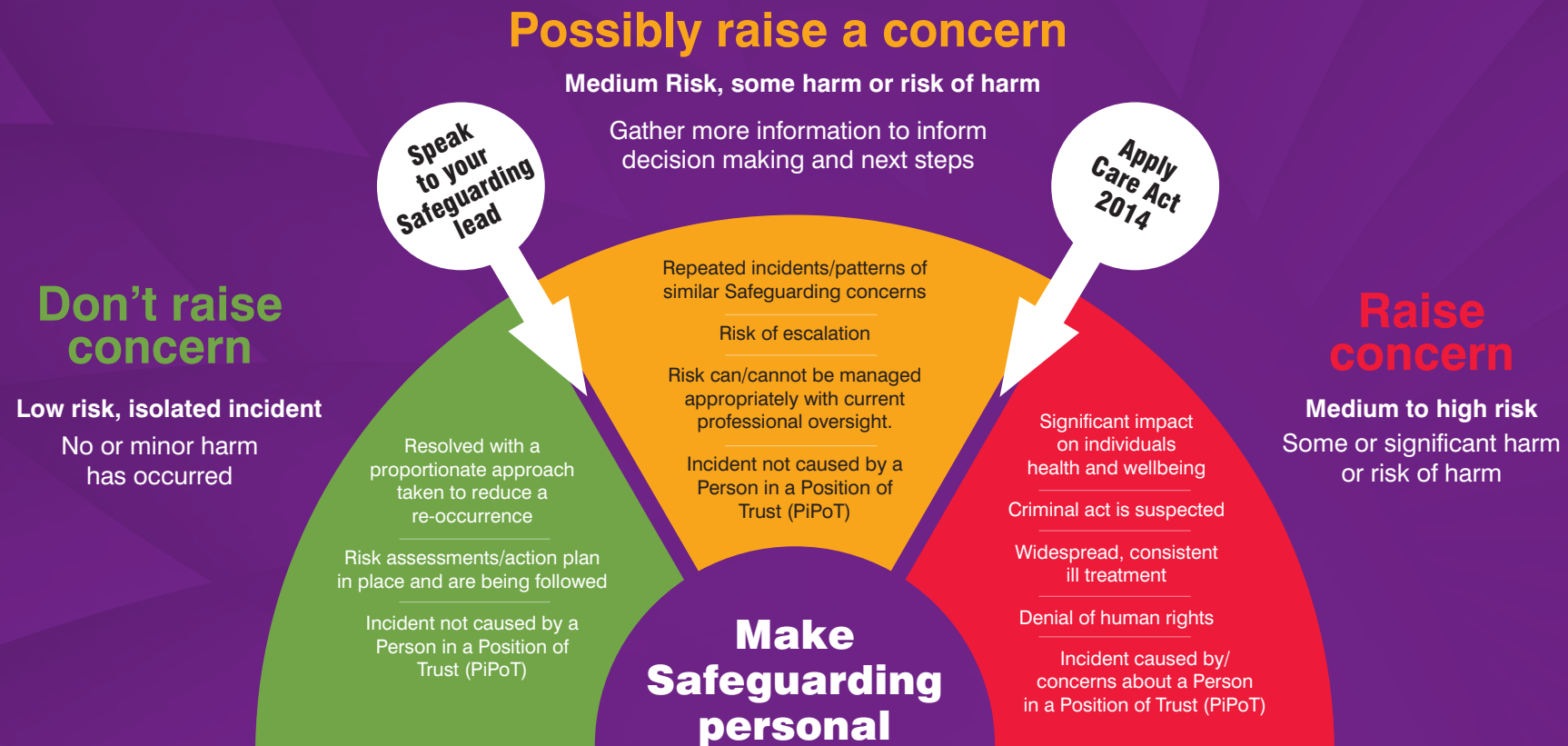


Safeguarding concern for an Adult



Refer to full guidance at www.lancashire.gov.uk/safeguarding

If a criminal act or emergency ring 999 or 101 non-emergency

Think Care Act

Think Responsibly

Risk Indicators

Example
(Not exhaustive)

Actions

Level 1 Low Risk Unlikely to raise a Safeguarding concern

Adults experiencing no harm or isolated incident

- No or minor harm
- Isolated incident - Minimal impact to person
- Resolved with proportionate approach to reduce reoccurrence
- Internal policies & procedures are Mental Capacity Act & Care Act compliant
- Comprehensive recording is in place
- Risk assessment/action plan in place
- Incident not caused by Person in Position of Trust

- Dispute between service users
- Poor handling/moving technique by inexperienced informal/family carer
- Care plan in place, needs not met but no harm/distress
- Risk can be managed by current professional oversight
- Person does not receive prescribed medication (missed/wrong dose). No harm occurs.
- One off incident of unpredictable low staffing. No harm caused

- Report any criminal act to Police 999/101
- Follow your organisation's Safeguarding procedure & routine assessments required
- Refer to additional guidance available on www.lancashire.gov.uk/safeguarding
- Review /refresh education
 - Staff Training & Mentoring | Conduct
 - Service user standards of conduct
- Referral to (as appropriate)
 - Occupational Therapy/Physiotherapy
 - Adult Social Care
- Signpost to appropriate universal services
 - Local Voluntary/Religious/Housing/Community services/ Mental Health/Domestic Abuse/Neighbourhood Policing

Level 2 Medium Risk Possibly raise a Safeguarding concern

Adults experiencing some harm or risk of harm

- Repeated incidents/patterns of similar safeguarding concerns
- Risk can/cannot be managed appropriately with current professional oversight or universal services
- Risk of escalation
- Incident not caused by Person in Position of Trust
- Risk of Escalation

- Care planning documentation not person centred
- Service provision does not respect equality and diversity principles
- Occasionally not having access to aids to independence e.g. services/equipment
- Repeated falls despite preventative advice - harm, distress and injury occurs
- Recurring missed medication or admin errors in relation to person - caused no harm

- Report any criminal act to Police 999/101
- Gather more information to inform decision making & next steps
- Follow your organisation's Safeguarding procedure & routine assessments required
- Refer to additional guidance available on www.lancashire.gov.uk/safeguarding
- Review /refresh education
 - Staff Training & Mentoring | Conduct
 - Service user standards of conduct
- Referral to (as appropriate)
 - Occupational Therapy/Physiotherapy
 - Adult Social Care
- Signpost to appropriate universal services
 - Local Voluntary/Religious/Housing/Community services/ Mental Health/Domestic Abuse/Neighbourhood Policing

Level 3 Medium to High Risk Raise a Safeguarding concern

Adults experiencing significant harm or risk of harm

- Humiliation or Threats
- Harm motivated by prejudice
- Recurring failure to meet specific needs associated with culture and diversity
- Incident caused by Person in Position of Trust
- Criminal act is suspected
- Continued failure to adhere to care plan

- Recurrent medication errors/deliberate maladministration of medication e.g. sedation
- Preventable pressure ulcer due to omission of care, serious injury or death as a result
- Unexplained or significant marks, lesions, cuts or grip marks
- Movement or threat to move into a place of exploitation or take part in activities against their will
- Repeated teasing by Person in Position of Trust causing distress
- Physical restraint outside of care plan

- Report any criminal act to Police 999/101
- Gather more information to inform decision making & next steps
- Follow your organisation's Safeguarding procedure & routine assessments required
- Raise a Safeguarding concern at www.lancashire.gov.uk/safeguarding