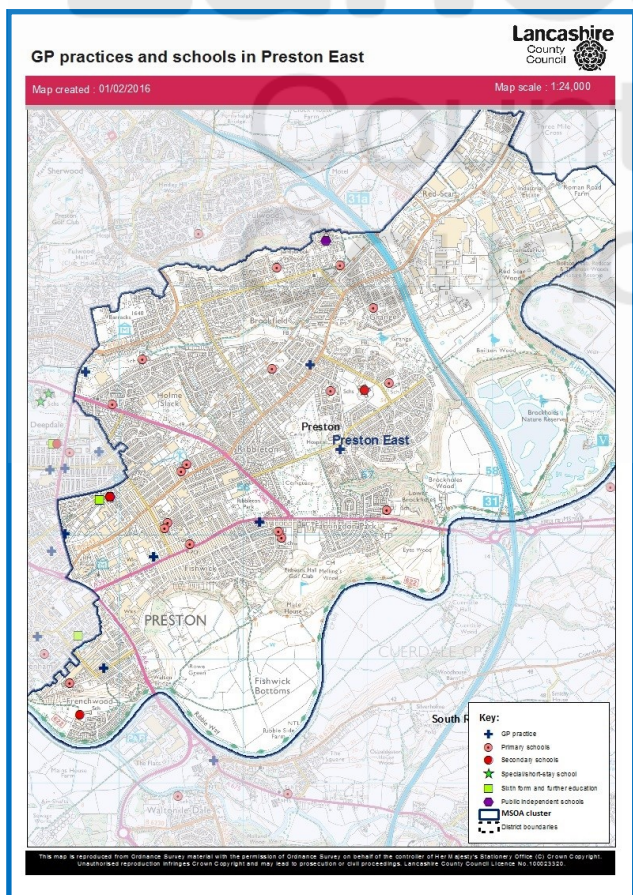


## Lancashire County Council Children & Young People’s Public Health Commissioning—Child Health Profiles 2017

Public Health, assisted by Business Intelligence within Lancashire County Council have created 34 middle level (MSOA\* cluster) Child Health Profiles (CHPs). This is because the CHPs on the Public Health England website are only at upper tier level. This does not show the outcome data at sub-district level but just an overview of children and young people’s health across the whole of County. These lower level profiles highlight where children’s health needs are the greatest and opportunities to reduce inequalities are greatest.

### PRESTON EAST



Preston East has 17 primary schools and 2 secondary schools with 2 independent schools and 1 special school.

There are 7 GP practices.

Preston East is the 2nd most deprived of the 34 CHPs (where 34 = best) and has the 2nd highest % of its school children claiming free school meals (31%). It has the highest % of young people aged 16-19 not in education employment or training (11.2%).

There is a high proportion of live births to young mums aged <20 years with 6.5% of all maternities to women this age (40 births ranked 2nd).

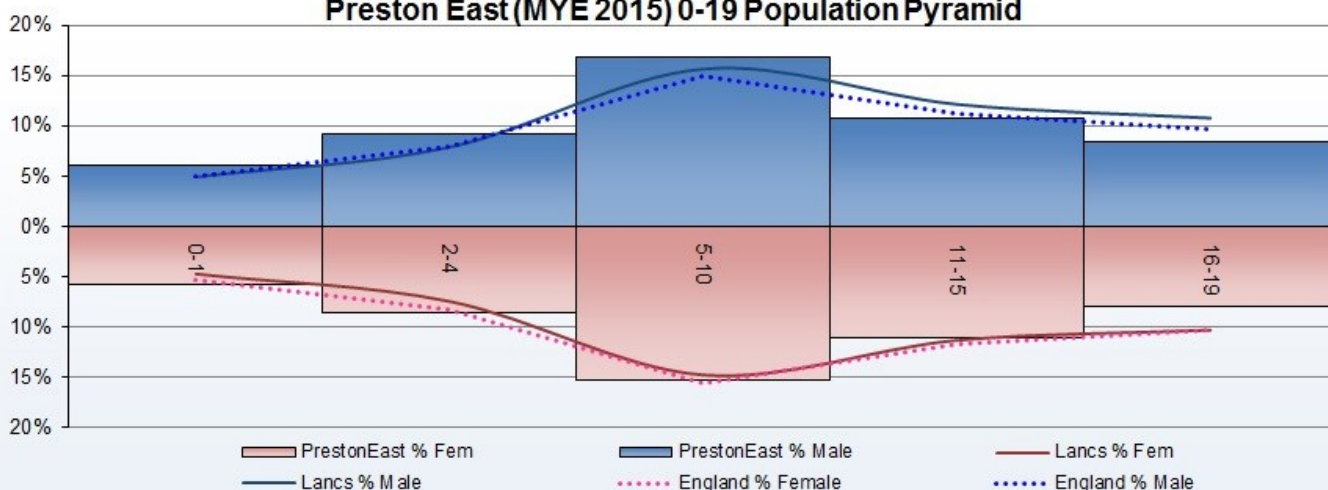
Preston East has the 2nd highest number of children on a child protection order.

Just 43% of 15/16 year olds are attaining education key stage 4 while just 51% attain key stage 2 (aged 11). 62% of children achieve a good level of development at the end of reception (ranked 4th where 1 = worst).

The ‘best’ indicator for Preston East is the % of reception aged children carrying excess weight with 19% (ranked 31st of 34) however (although not in this profile) children in Preston East also have the 2nd highest % of children who are underweight with 2.2% of reception and 4% of Year 6 being underweight

Age Band	Female	Male	PrestonEast % Fem	PrestonEast % Male	Lancs % Fem	Lancs % Male
0-1	667	689	6%	6%	5%	5%
2-4	983	1046	9%	9%	7%	8%
5-10	1740	1929	15%	17%	15%	16%
11-15	1267	1234	11%	11%	11%	12%
16-19	910	956	8%	8%	10%	11%
Total	5567	5854	49%	51%	49%	51%

**Preston East (MYE 2015) 0-19 Population Pyramid**



\* MSOA - Middle Layer Super Output Areas are built from groups of Lower Layer Super Output Areas. The minimum population is 5000 and the mean is 7200

Lancashire County Council Children & Young People’s Public Health Commissioning—Child Health Profiles 2017

Indicators are ranked according to their position within the 34 MSOA cluster profiles and the colour ramp indicates in which quintile the value is located. The top seven being red (worst 5th), the next seven being orange (2nd worst 5th) the mid 6 being yellow (middle 5th) the next to best seven being blue (2nd best fifth) and the lowest seven being green (best 5th)

Top 5 'worst' indicators	Rank		Value
YP NEET %	1	⊗	11%
% of children living in poverty, 2015	2	↔	31%
Live births to mums aged <20yrs 2015	2	NEW	40 (6.45%)
No of children aged 0-4 on a child protection order as of 31st March 2017	2	NEW	60
No of children aged 5-17 on a child protection order as of 31st March 2017	2	NEW	58
Preston East	Rank		Value
% of children living in poverty, 2015	2	↔	31%
Child mortality (actual) rate per 10,000 1-17 year olds, 2006-2015	9	↑	(22) 2.25
Infant deaths (actual) rate per 1,000 live births, 2006-2015	6	↓	(43) 6.32
A&E attendance rate per 1,000 0-4 year olds, 2015/16	12	↑	495.13
A&E attendance rate per 1,000 5-19 year olds, 2015/16	13	NEW	325.29
Non elective admissions in 0-4 year olds rate per 1,000, 2015/16	12	↑	265.29
Free school meals Jan 2017 %	3	↓	22%
YP NEET %	1	⊗	11%
Educational attainment key stage 2 %	11	⊗	51%
Educational attainment key stage 4 %	3	↓	43%
% of reception age children carrying excess weight	31	↓	19%
% of year six children carrying excess weight	13	↓	31%
0-19's Road Traffic Accidents, crude rate per 1000 pop	15	⊗	2.63
Live births to mums aged <20yrs 2015 (% of all maternities)	2	NEW	40 (6.45%)
No of children aged 0-4 on a child protection order as of 31st March 2017	2	NEW	60
No of children aged 5-17 on a child protection order as of 31st March 2017	2	NEW	58
No of looked after children aged 0-4 as of 31st March 2017	4	NEW	22
No of looked after children aged 5-17 as of 31st March 2017	12	NEW	36
% of children achieving a good level of development at the end of reception	4	NEW	62%
Preston District Authority	Value		
Unplanned hospitalisation for asthma, diabetes and epilepsy in under 19s (indirectly standardised rate per 100,000 pop aged <19yrs)	489.40	↑	Significantly higher than England
Hospital admissions for accidental and deliberate injuries in children (aged 0-4) rate per 10,000 aged 0-4 2015/16	198.99	↑	Significantly higher than England
LBW of term babies per 1000 live births	3.00	↓	No significant difference from England rate
Alcohol-specific hospital admission - under 18s crude rate per 100,000	40.60	↓	No significant difference from England rate
Long term conditions (asthma, cancer, diabetes & epilepsy) - estimated number based on 0-17 MYE pop	2932	NEW	No comparison to Eng. Ranked 12/12 of the 12 Lancs. district authorities (1=best)
Smoking status at time of delivery	11%	NEW	No significant difference from England rate
Greater Preston CCG	Value		
Breastfeeding initiation	73%	↓	No significant difference from England rate

Metadata is available on request: [gillian.kelly@lancashire.gov.uk](mailto:gillian.kelly@lancashire.gov.uk)

\* MSOA - Middle Layer Super Output Areas are built from groups of Lower Layer Super Output Areas. The minimum population is 5000 and the mean is 7200