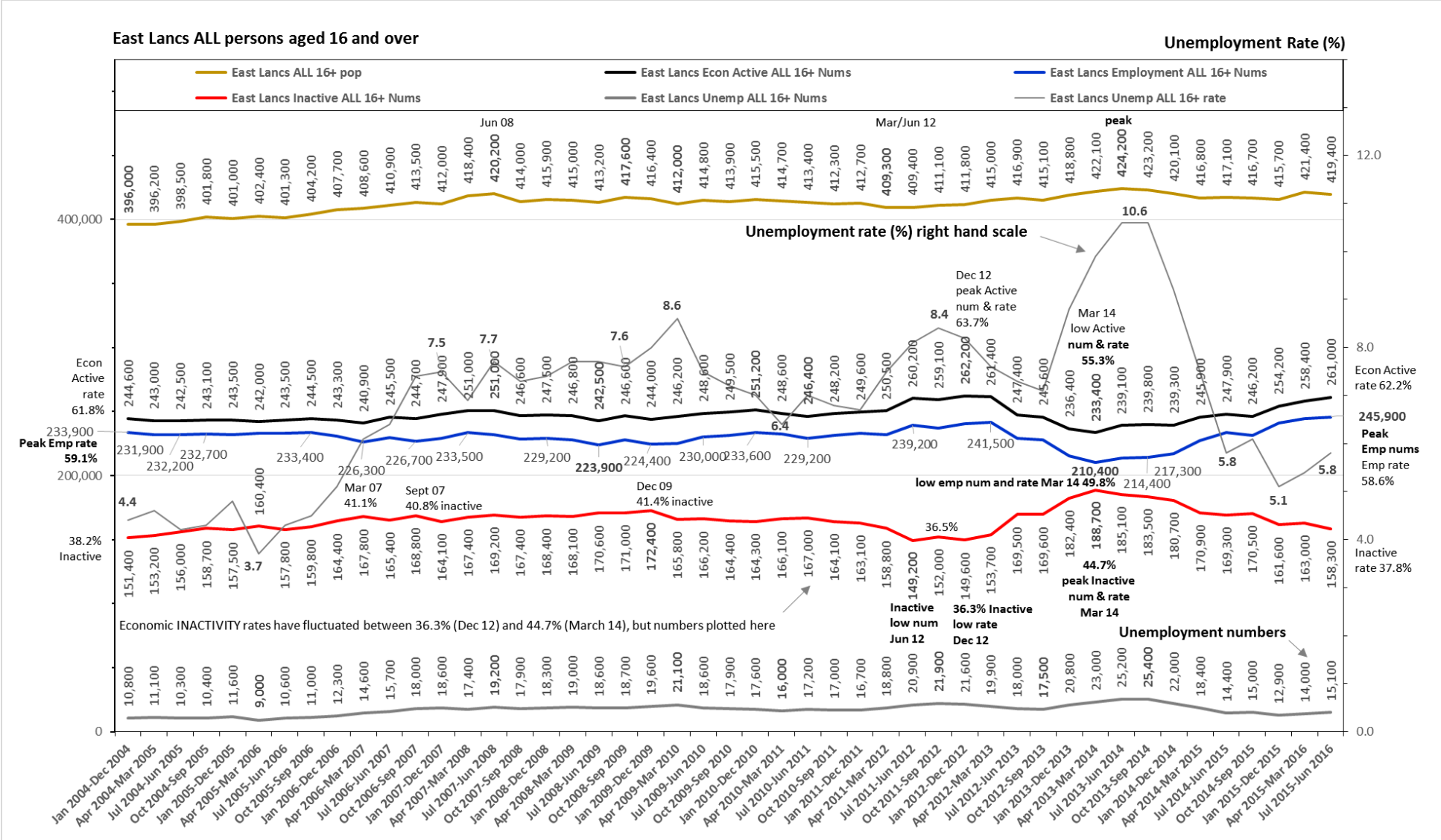
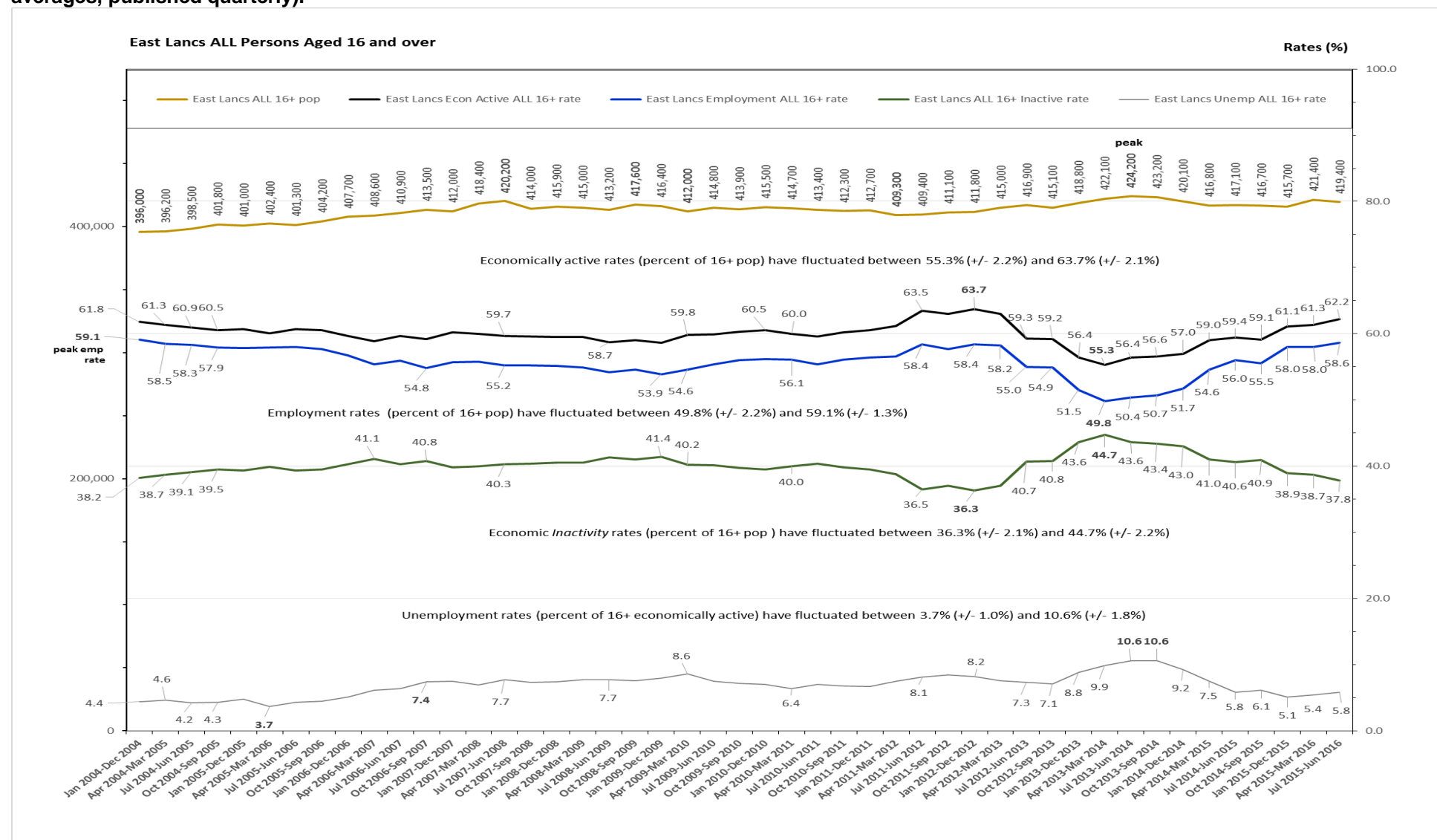


Figure LM1: East Lancashire 6-authority sub-region population aged 16+, economically active population aged 16+, numbers employed aged 16+, economically inactive numbers aged 16+, unemployment numbers aged 16+, unemployment rate aged 16+ - from the year ending December 2004 to the year ending June 2016 (yearly averages, published quarterly).



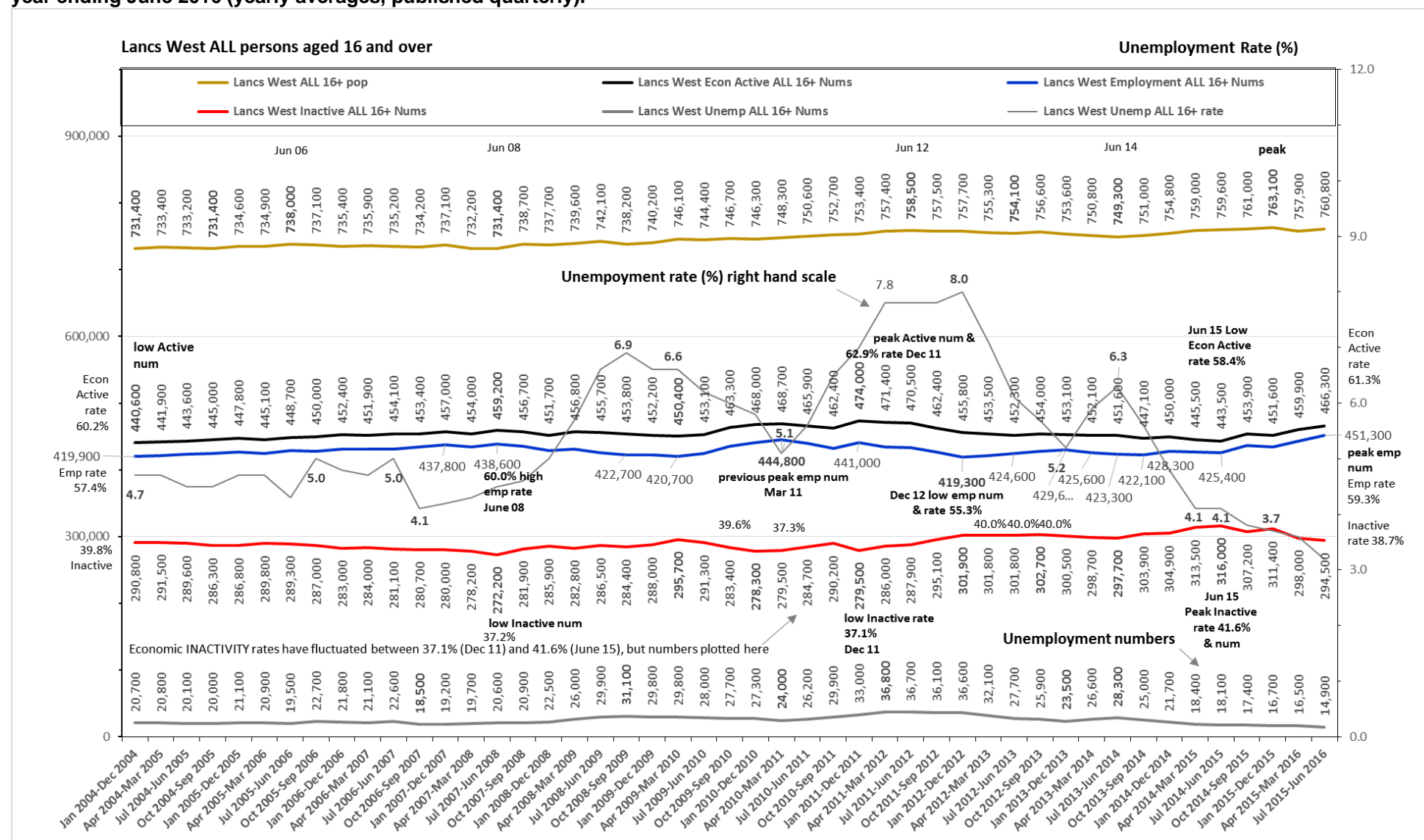
Source: Office for National Statistics Annual Population Survey via the National On-line Manpower Information Service (N.O.M.I.S.).

Figure LM1R: East Lancashire 6-authority sub-region population aged 16+, economically active rates aged 16+, employment rates aged 16+, economically inactive rates aged 16+ and unemployment rates aged 16+ - from the year ending December 2004 to the year ending June 2016 (yearly averages, published quarterly).



Source: Office for National Statistics Annual Population Survey via the National On-line Manpower Information Service (N.O.M.I.S.).

Figure LM2: Lancashire West 8-authority sub-region population aged 16+, economically active population aged 16+, numbers employed aged 16+, economically inactive numbers aged 16+, unemployment numbers aged 16+, unemployment rate aged 16+ - from the year ending December 2004 to the year ending June 2016 (yearly averages, published quarterly).



Source: Office for National Statistics Annual Population Survey via the National On-line Manpower Information Service (N.O.M.I.S.).

Lancs West ALL Persons Aged 16 and over

Rates (%)

Legend: Lancs West ALL 16+ pop, Lancs West Econ Active ALL 16+ rate, Lancs West Employment ALL 16+ rate, Lancs West ALL 16+ Inactive rate, Lancs West Unemp ALL 16+ rate

Population (left axis): 900,000, 700,000, 500,000, 300,000, 0

Rates (%) (right axis): 100.0, 80.0, 60.0, 40.0, 20.0, 0.0

Annotations:

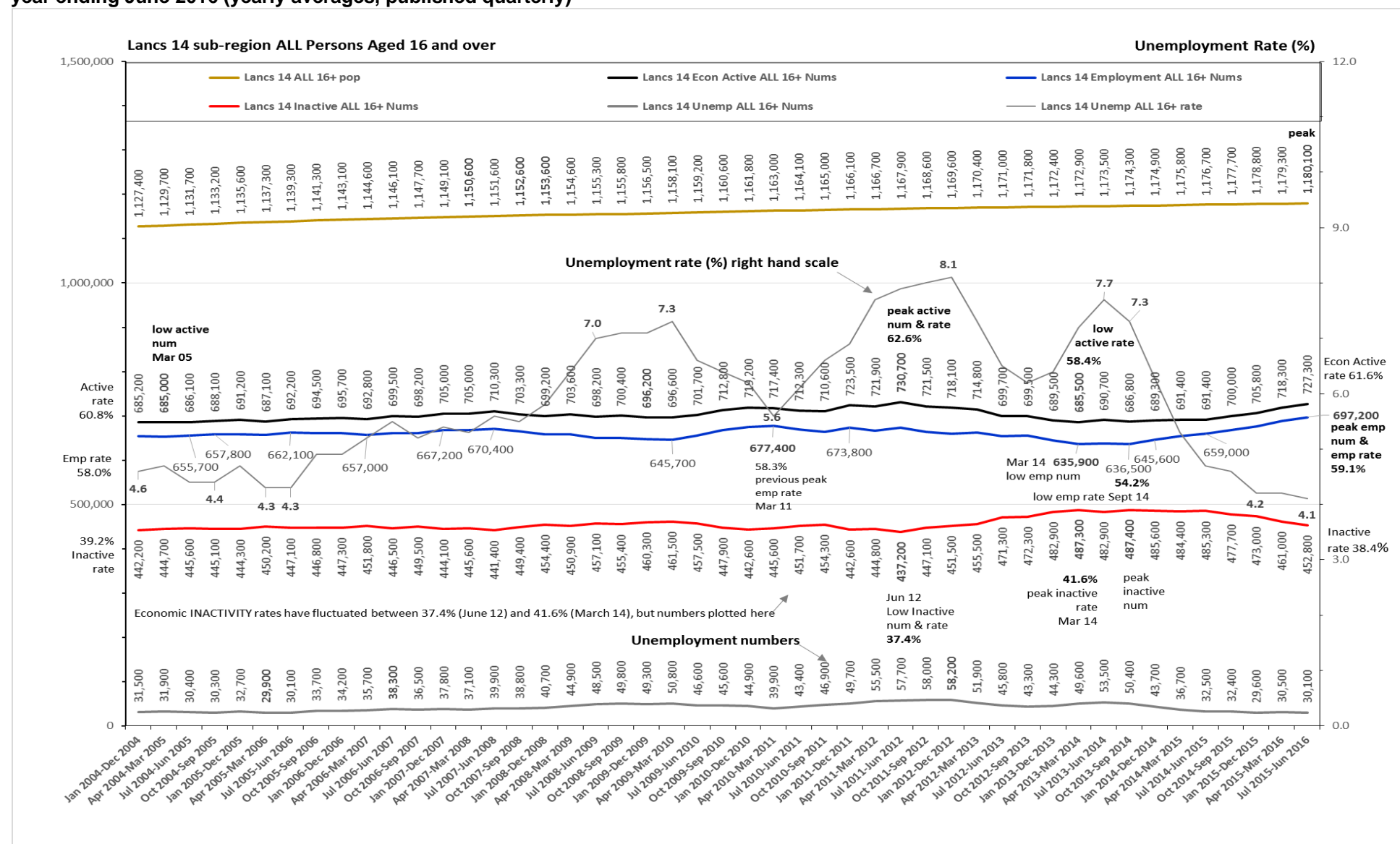
- Economically active rates (percent of 16+ pop) have fluctuated between 58.4% (+/- 1.8%) and 62.9% (+/- 1.7%)
- Employment rates (percent of 16+ pop) have fluctuated between 55.3% (+/- 1.8%) and 60.0% (+/- 1.6%)
- Economic *Inactivity* rates (percent of 16+ pop) have fluctuated between 37.1% (+/- 1.7%) and 41.6% (+/- 1.8%)
- Unemployment rates (percent of 16+ economically active) have fluctuated between 3.2% (+/- 0.9%) and 8.0% (+/- 1.3%)

Key Data Points (approximate values from chart):

Date	Lancs West ALL 16+ pop	Lancs West Econ Active ALL 16+ rate	Lancs West Employment ALL 16+ rate	Lancs West ALL 16+ Inactive rate	Lancs West Unemp ALL 16+ rate
Jan 2004	731,400	60.3	57.4	39.7	4.7
Jul 2004	733,400	60.5	57.8	39.5	4.5
Jan 2005	733,200	60.9	58.1	39.1	4.5
Jul 2005	731,400	60.2	57.4	39.8	4.7
Jan 2006	734,600	60.2	57.4	39.8	4.7
Jul 2006	734,900	60.2	57.4	39.8	4.7
Jan 2007	735,000	60.2	57.4	39.8	4.7
Jul 2007	735,200	60.2	57.4	39.8	4.7
Jan 2008	734,200	60.2	57.4	39.8	4.7
Jul 2008	737,100	60.2	57.4	39.8	4.7
Jan 2009	732,200	60.2	57.4	39.8	4.7
Jul 2009	731,400	62.8	60.0	37.2	4.5
Jan 2010	738,700	60.4	56.4	39.6	6.6
Jul 2010	737,700	60.4	56.4	39.6	6.6
Jan 2011	739,600	62.7	59.4	37.4	5.1
Jul 2011	742,100	62.6	58.5	37.1	7.8
Jan 2012	738,200	62.9	57.2	38.0	8.0
Jul 2012	740,200	62.0	55.3	39.8	6.1
Jan 2013	746,100	60.0	56.3	40.0	5.7
Jul 2013	746,700	60.0	56.6	40.0	5.2
Jan 2014	750,800	60.1	56.7	39.9	5.9
Jul 2014	755,300	60.2	56.2	40.5	6.3
Jan 2015	754,100	60.3	56.7	40.4	4.8
Jul 2015	756,600	59.5	56.7	41.3	4.1
Jan 2016	759,000	59.6	56.3	41.6	4.1
Jul 2016	759,600	58.7	56.0	40.4	3.8
Jan 2017	761,000	58.4	57.4	40.8	3.7
Jul 2017	763,100	59.6	57.0	39.3	3.6
Jan 2018	757,900	60.7	58.5	38.7	3.2
Jul 2018	760,800	61.3	59.3	38.7	3.2

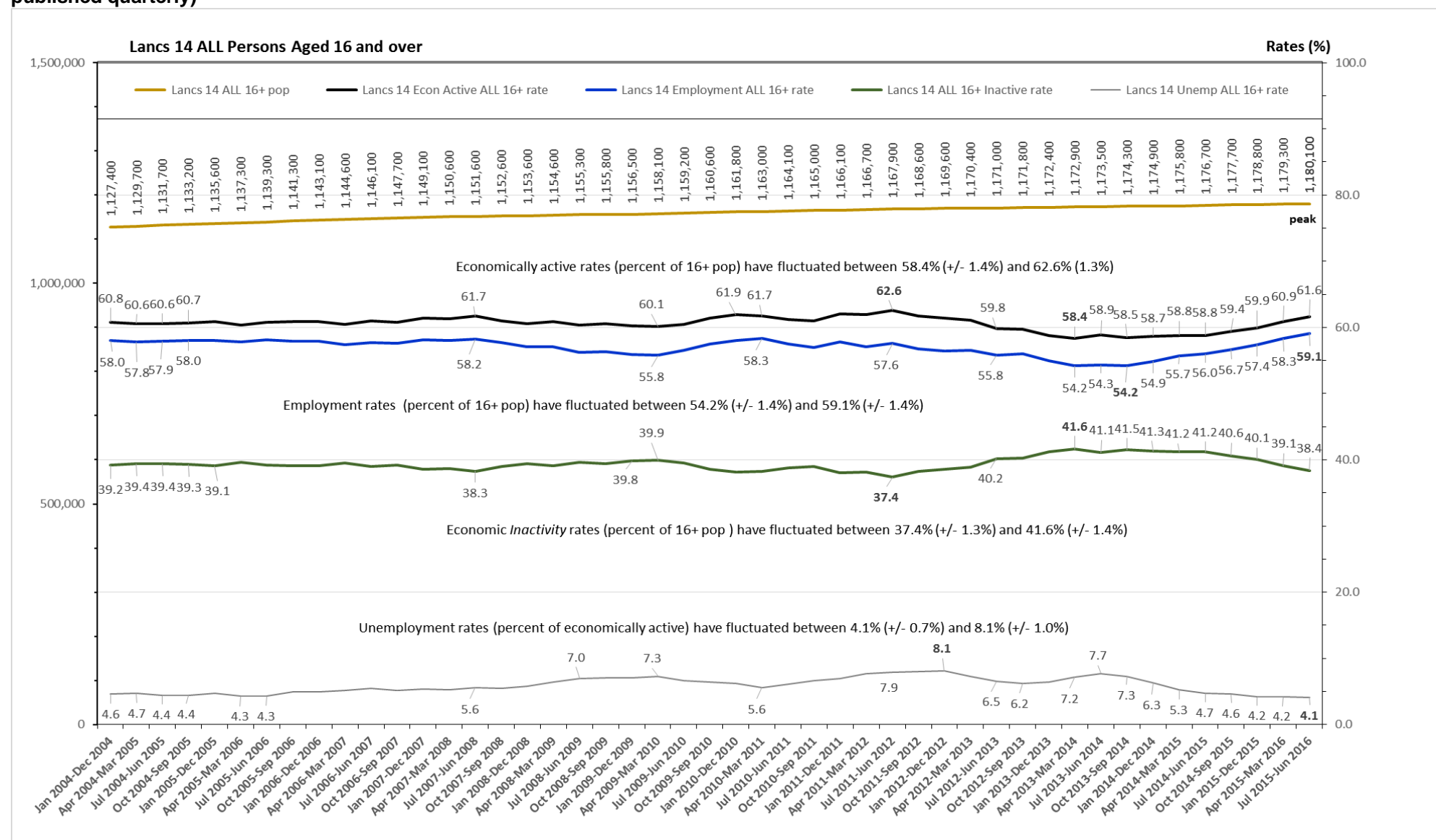
Official Labour Market Graphs – time series for years ending December 2004 to June 2016 – Lancashire sub-regions, North West & UK

Figure LM3: Lancashire 14-authority sub-region population aged 16+, economically active population aged 16+, numbers employed aged 16+, economically inactive numbers aged 16+, unemployment numbers aged 16+, unemployment rate aged 16+ - from the year ending December 2004 to the year ending June 2016 (yearly averages, published quarterly)



Source: Office for National Statistics Annual Population Survey via the National On-line Manpower Information Service (N.O.M.I.S.).

Figure LM3R: Lancashire 14-authority sub-region population aged 16+, economically active rates aged 16+, employment rates aged 16+, economically inactive rates aged 16+ and unemployment rates aged 16+ - from the year ending December 2004 to the year ending June 2016 (yearly averages, published quarterly)



Source: Office for National Statistics Annual Population Survey via the National On-line Manpower Information Service (N.O.M.I.S.).

Lancs 12 County ALL Persons Aged 16 and over

Unemployment Rate (%)

1,200,000

908,900 909,600 912,500 913,700 916,400 920,900 922,100 922,700 925,100 923,600 924,400 925,500 927,500 927,700 930,500 931,200 932,000 930,300 928,000 930,000 930,900 933,400 935,900 932,300 933,000 934,900 933,100 935,700 937,900 937,800 940,900 938,300 938,500 939,400 940,900 941,800 941,500 943,600 942,700 944,300 944,100 944,400 945,700 946,900 949,300 949,900 949,900

Unemployment rate (%) right hand scale

7.9 7.4 7.7 7.3 4.1 3.5 3.7

Active low nums 531,900

Active peak num & 63.8% rate 599,800

Inactive lows 341,100

Inactive highs 386,600

Peak Emp nums & rate 60.6%

529,600

Unemployment numbers

21,900 21,900 22,900 23,100 20,300 27,300 34,100 40,800 43,200 38,900 33,700 32,700 34,900 40,600 46,000 45,400 45,300 43,700 38,300 34,300 31,200 28,200 33,400 35,200 35,200 33,200 37,800 38,500 35,700 33,000 31,700 32,200 30,200 29,700 28,800 30,500 27,800 26,000 24,900 23,100 24,900 24,500 23,000 23,100 24,900

Econ Active rate 61.3%

Emp rate 58.6%

Inactive 38.7%

4.4 3.8 5.1 6.8 6.8 4.8 59.8% Previous Emp highs Mar 11 36.2% Jun 12 Inactive lows 54.9% Mar 14 Emp lows 41.0% Mar 14 Inactive highs

Economic INACTIVITY rates have fluctuated between 36.2% (June 12) and 40.9% (March 14), but numbers plotted here

Jan 2004-Dec 2004

Apr 2004-Mar 2005

Jul 2004-Jun 2005

Oct 2004-Sep 2005

Jan 2005-Dec 2005

Apr 2005-Mar 2006

Jul 2005-Jun 2006

Oct 2005-Sep 2006

Jan 2006-Dec 2006

Apr 2006-Mar 2007

Jul 2006-Jun 2007

Oct 2006-Sep 2007

Jan 2007-Dec 2007

Apr 2007-Mar 2008

Jul 2007-Jun 2008

Oct 2007-Sep 2008

Jan 2008-Dec 2008

Apr 2008-Mar 2009

Jul 2008-Jun 2009

Oct 2008-Sep 2009

Jan 2009-Dec 2009

Apr 2009-Mar 2010

Jul 2009-Jun 2010

Oct 2009-Sep 2010

Jan 2010-Dec 2010

Apr 2010-Mar 2011

Jul 2010-Jun 2011

Oct 2010-Sep 2011

Jan 2011-Dec 2011

Apr 2011-Mar 2012

Jul 2011-Jun 2012

Oct 2011-Sep 2012

Jan 2012-Dec 2012

Apr 2012-Mar 2013

Jul 2012-Jun 2013

Oct 2012-Sep 2013

Jan 2013-Dec 2013

Apr 2013-Mar 2014

Jul 2013-Jun 2014

Oct 2013-Sep 2014

Jan 2014-Dec 2014

Apr 2014-Mar 2015

Jul 2014-Jun 2015

Oct 2014-Sep 2015

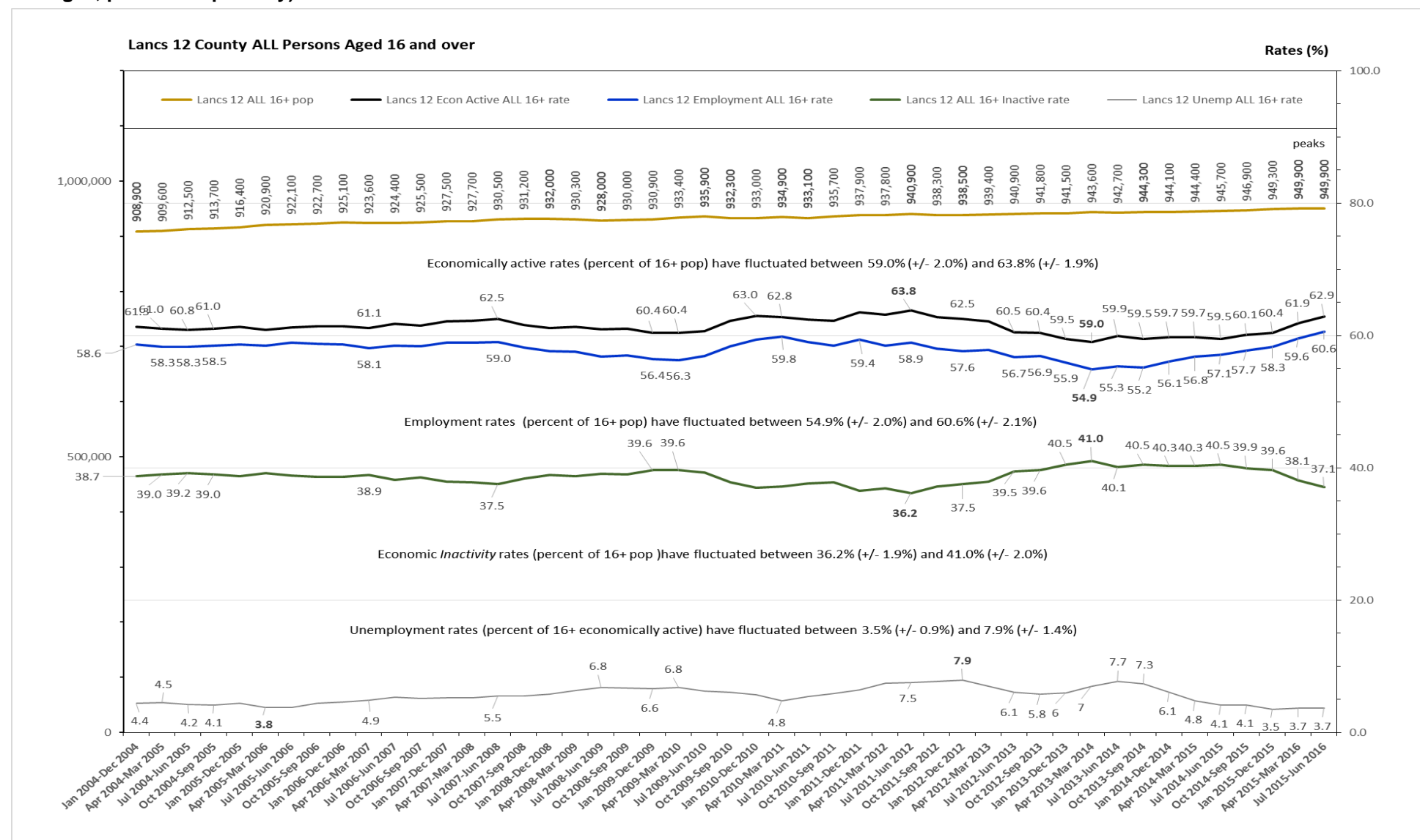
Jan 2015-Dec 2015

Apr 2015-Mar 2016

Jul 2015-Jun 2016

Official Labour Market Graphs – time series for years ending December 2004 to June 2016 – Lancashire sub-regions, North West & UK

Figure LM4R: Lancashire County Council 12-authority area population aged 16+, economically active rates aged 16+, employment rates aged 16+, economically inactive rates aged 16+ and unemployment rates aged 16+ - from the year ending December 2004 to the year ending June 2016 (yearly averages, published quarterly).



Source: Office for National Statistics Annual Population Survey via the National On-line Manpower Information Service (N.O.M.I.S.).

Official Labour Market Graphs – time series for years ending December 2004 to June 2016 – Lancashire sub-regions, North West & UK

United Kingdom ALL Persons Aged 16 and over (thousands)

Rates (%)

UK ALL 16+ pop UK Econ Active ALL 16+ rate UK Employment ALL 16+ rate UK ALL 16+ Inactive rate UK Unemp ALL 16+ rate

60,000.0

50,000.0

40,000.0

30,000.0

20,000.0

10,000.0

0.0

100.0

80.0

60.0

40.0

20.0

0.0

Jan 2004-Dec 2004
Apr 2004-Mar 2005
Jul 2004-Jun 2005
Oct 2004-Sep 2005
Jan 2005-Mar 2006
Apr 2005-Sep 2006
Jul 2005-Jun 2006
Oct 2005-Sep 2006
Jan 2006-Mar 2007
Apr 2006-Sep 2007
Jul 2006-Jun 2007
Oct 2006-Sep 2007
Jan 2007-Mar 2008
Apr 2007-Sep 2008
Jul 2007-Jun 2008
Oct 2007-Sep 2008
Jan 2008-Mar 2009
Apr 2008-Sep 2009
Jul 2008-Jun 2009
Oct 2008-Sep 2009
Jan 2009-Mar 2010
Apr 2009-Sep 2010
Jul 2009-Jun 2010
Oct 2009-Sep 2010
Jan 2010-Mar 2011
Apr 2010-Sep 2011
Jul 2010-Jun 2011
Oct 2010-Sep 2011
Jan 2011-Mar 2012
Apr 2011-Sep 2012
Jul 2011-Jun 2012
Oct 2011-Sep 2012
Jan 2012-Mar 2013
Apr 2012-Sep 2013
Jul 2012-Jun 2013
Oct 2012-Sep 2013
Jan 2013-Mar 2014
Apr 2013-Sep 2014
Jul 2013-Jun 2014
Oct 2013-Sep 2014
Jan 2014-Mar 2015
Apr 2014-Sep 2015
Jul 2014-Jun 2015
Oct 2014-Sep 2015
Jan 2015-Mar 2016
Apr 2015-Sep 2016
Jul 2015-Jun 2016

47,488.3
47,609.0
47,730.0
47,849.1
47,969.7
48,079.1
48,184.6
48,293.3
48,398.1
48,520.7
48,640.1
48,761.7
48,881.7
49,000.6
49,118.8
49,236.4
49,352.9
49,451.8
49,550.0
49,647.3
49,745.0
49,857.2
49,968.7
50,079.8
50,192.5
50,305.9
50,420.4
50,535.2
50,649.7
50,772.2
50,806.0
50,884.3
50,962.6
51,042.0
51,123.3
51,203.2
51,284.4
51,379.1
51,476.1
51,574.0
51,669.6
51,773.6
51,876.1
51,979.2
52,081.9
52,172.3
52,263.2

62.6 62.7 62.7 62.8 62.8 63.2 63.3 63.2 63.3 63.2 63... 62... 62.6 62.6 62.5 62.6 62.7 62.9 63.0 63.0 63.0 62.9 63.0 63.0 63.1 63.2 63.2

59.7 59.7 59.7 59.8 5... 59.9 60.0 60.0 59.9 58.0 58.0 58.0 57.6 57.6 57.6 57.6 58.0 58.3 58.7 58.9 59.0 59.2 59.5 59.7 59.9 59.9

37.4 37.3 37.3 37.2 37.2 36.8 36.7 36.8 36.7 36.8 36.8 37.1 37.3 37.5 37.3 37.1 37.0 37.0 37.0 37.0 37.0 37.1 37.0 37.0 36.9 36.8 36.8

4.8 4... 4.8 4.7 4.9 5.3 5.3 5.1 5.1 5.3 7.8 7.6 7.6 7.6 8.1 8.1 7.8 7.2 6.8 6.5 6.2 6.0 5.7 5.5 5.3 5.2 5.1

peak

peak

peak emp rates

low inactive

low inactive

peak inactive rate

Economically active rates (percent of 16+ pop) have fluctuated between 62.5% (+/- 0.2%) and 63.3% (+/- 0.2%)

Employment rates (percent of 16+ pop) have fluctuated between 57.6% (+/- 0.2) and 60.0% (+/- 0.2%)

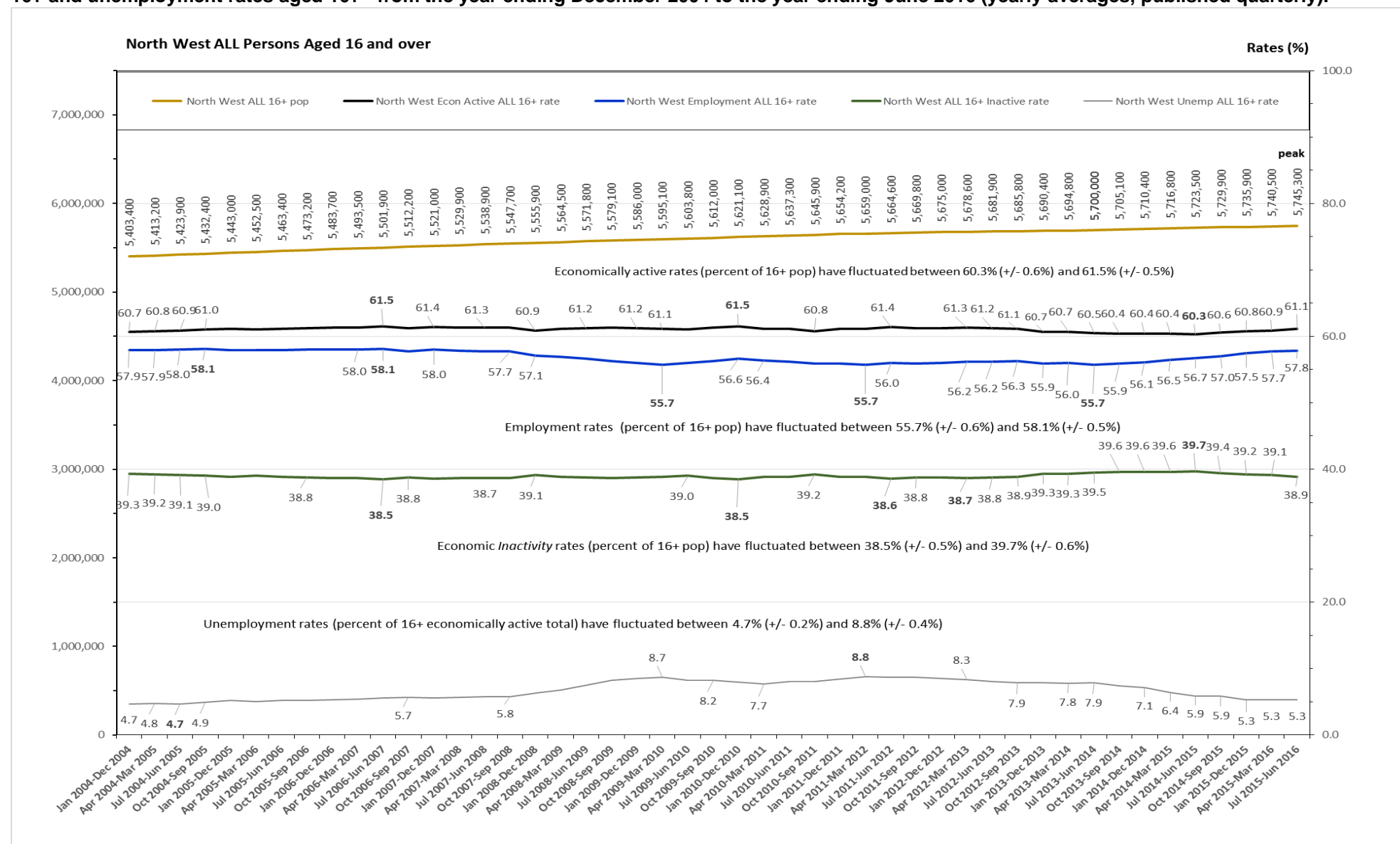
Economic *Inactivity* rates (percent of 16+ pop) have fluctuated between 36.7% (+/- 0.2%) and 37.5% (+/- 0.2%)

Unemployment rates (percent of 16+ economically active total) have fluctuated between 4.7% (+/- 0.1%) and 8.1% (+/- 0.1%)

Official Labour Market Graphs – time series for years ending December 2004 to June 2016 – Lancashire sub-regions, North West & UK

Official Labour Market Graphs – time series for years ending December 2004 to June 2016 – Lancashire sub-regions, North West & UK

Figure LM6R: North West Region population aged 16+, economically active rates aged 16+, employment rates aged 16+, economically inactive rates aged 16+ and unemployment rates aged 16+ - from the year ending December 2004 to the year ending June 2016 (yearly averages, published quarterly).



Source: Office for National Statistics Annual Population Survey via the National On-line Manpower Information Service (N.O.M.I.S.).