



# Environment Commissioning Plan for Preston 2015-16

April 2015

[www.lancashire.gov.uk](http://www.lancashire.gov.uk)

# Contents

<b>1. INTRODUCTION</b> .....	<b>3</b>
1.1 Shaping Service Delivery in Preston.....	4
1.2 Council Transformation.....	5
1.3 Priority Neighbourhoods Approach .....	6
1.4 Local Transport Plan .....	8
1.5 Approved Capital Projects from 2014/15 for Delivery in 2015/16.....	10
<b>2. HIGHWAY SERVICES</b> .....	<b>11</b>
2.1 Road and Street Maintenance .....	11
<i>Highways Contact Information</i> .....	11
<i>Street Services Agreement (Public Realm)</i> .....	15
2.2 Street Lighting.....	15
2.3 Flood Risk Management and Drainage .....	16
2.4 Traffic Signals .....	17
2.5 Keeping Traffic Moving .....	18
<i>Cycling</i> .....	19
2.6 Highway Improvements .....	19
2.7 Severe Weather Response.....	20
2.8 Bridges and Highway Structures.....	23
2.9 Parking .....	25
2.10 Property Services: Building, Design and Construction Group.....	25
<b>3. TRANSPORT SERVICES</b> .....	<b>27</b>
3.1 Bus Travel.....	28
<i>Bus information</i> .....	29
<i>Concessionary travel</i> .....	30
<i>School travel</i> .....	30
<i>Community transport services</i> .....	30
3.2 Rail Travel.....	31
3.3 Road Safety .....	32
<b>4 ENVIRONMENT AND PUBLIC PROTECTION SERVICES</b> .....	<b>38</b>
4.1 Environmental and Community Projects .....	38
4.2 Waste Recovery and Disposal.....	40
4.3 Planning and Development Support .....	41
4.4 Countryside Services.....	42
4.5 Trading Standards and Scientific Services .....	45
4.6 Emergency Planning.....	51
<b>Appendix A</b> .....	<b>52</b>
<b>Index of Multiple Deprivation 2010</b> .....	<b>57</b>
<b>Glossary</b> .....	<b>58</b>
<b>Contact Us</b> .....	<b>62</b>

# 1. INTRODUCTION

The Environment Directorate currently delivers a wide range of services from highway maintenance, environmental management, and scientific services, to waste management, emergency planning, trading standards, and strategic transport planning. Many of these services are used by people living in Lancashire every day and are often the services residents and visitors to Lancashire use the most.

However, our current directorate structure will cease to exist after March 2016. The changes are needed because, by 2017-18, we have to find £300 million of savings in the council's annual budget compared to 2013-14. As the county council transforms over the next 12 months into a new-look organisation with a new offer for the people we serve and a new operating structure that enables us to deliver on our promises, we remain committed to improving the quality of life and the environment for the people and businesses of Lancashire.

This plan contains details of the highway, transport, environment and public protection capital schemes and revenue services to be provided in Preston in 2015/16. Throughout the year the capital programme and revenue funded activities are closely monitored. Where necessary, for example as priorities change, this plan will be amended and kept as up to date as possible.

## In year changes and updates

Changes to how we intend to deliver services will be detailed in the table below.

Progress and updates are also communicated via the quarterly district dashboards. Quarterly bulletins provide in year forward looking service delivery information on a district basis.

Please follow the links to see the latest versions:

Preston [Environment Directorate dashboards](#)

Preston [Environment Bulletins](#)

The plan is a live document that will be updated through the course of the year and all changes made are noted below:

Section and page number	Change/s made	Reason for change/s	Date of change

## 1.1 Shaping Service Delivery in Preston

### The Commissioning Process

Shaping service delivery for the county council has a number of drivers. In more recent years there has been an ongoing challenge to deliver value for money services, meet the expectations and needs of the residents of Lancashire, whilst also meeting our environmental, legal and social responsibilities. The next few years will be the council's most challenging to date.

However, our current directorate structure will cease to exist after March 2016. The county council is currently undergoing a significant transformation in order to achieve savings by 2017-18 in the order of £300 million. As the county council transforms over the next 12 months a new operating structure will come into effect that enables the council to remain committed to providing effective services and improving the quality of life, and the environment for the people and businesses of Lancashire.

The annual commissioning plans are the outcome of this approach. They are public statements of our intentions, taking into account local need, technical, financial and legal considerations. They set out our commitments, service priorities and the resources allocated to provide them. They are produced through a process of consultation and engagement with key stakeholders including:

- County and district councillors
- Parish and town councillors
- Officers of both the county council and district councils

Each commissioning plan is supported by a comprehensive 'district needs profile' that provides a factual overview of the district from both a local district perspective and the wider county perspective. This needs profile provides an overarching assessment of the needs of each district. Our service offer is aimed at contributing towards addressing those needs, some of which are very complex and of a long standing nature. Many of the issues require internal and/or external partner input. Details of Preston's needs profile can be found at Appendix A.

Our services are delivered through two types of funding – capital and revenue. Capital funding is used for the construction, improvement and long term maintenance of assets such as roads, footways, bridges, traffic signals, public rights of way, public transport infrastructure, waste facilities and property. Revenue funding is used for the day-to-day running of our services, including staff resources, waste recovery and disposal, cyclical and reactive maintenance of our assets, public transport provision, a range of environment and community projects, and the running costs of buildings and equipment.

This plan contains details of the highway, transport, environment and public protection capital schemes and revenue services to be provided in Preston in 2015/16. Where necessary, for example as priorities change, this plan will be amended and kept as up to date as possible.

## 1.2 Council Transformation

### Our Vision

Over the next twelve months Lancashire County Council will be continuing to transform into a new-look organisation with a new offer to the people we serve, and a new operating structure that enables us to deliver effective and efficient services for the people of Lancashire. Services will be provided within an overall cost envelope which will be £300 million less by 2017/18. This means that our service offer for 2015/16 involves providing some services differently, and in some cases significantly reducing levels of service compared with previous years. The new organisational structure will be fully operational by April 2016. Although this is a challenging process the council will still be one of the region's biggest spenders and employers will still have the potential to make a really positive difference to our local communities. The consequences of reduced budgets are detailed in the service offers outlined in this commissioning plan.

The prosperity, health and wellbeing of Lancashire people will be our focus and we'll aim to make a positive difference to peoples' lives using the most efficient and effective means.

### Our communities

The county council's role has always been to deliver the best possible service to the people of Lancashire. Serving our communities will be about supporting and creating prosperity, health and wellbeing.

- **Prosperity** because the success of the Lancashire economy will determine the availability of good jobs that allow people to fulfil their aspirations and enjoy independent, productive lives; and because a strong, diverse commercial base will be central to sustaining investment in the county and in turn securing long term economic success.
- **Health** because it is central to every individual's happiness and ability to achieve what they want from life; and because the ageing population profile and unhealthy lifestyles present the greatest challenge to public services in coping with future demand.
- **Wellbeing** because we aim to move from intervention to prevention as much as we can, giving people the opportunities that allow them to stay well and thrive on their own, or as part of their family; and because it allows the council to focus its resources on the most vulnerable members of our communities, while maintaining those universal services that are essential to making Lancashire a good place to live and work.

We will take inspiration from the work the council has been doing over the last few years to identify the most effective ways of reducing health inequalities, which means reducing the gap in health and life expectancy between communities in different parts of Lancashire.

### Our new organisation

The focus on prosperity, health and wellbeing set out above will be clearly reflected in how the new organisation works, how it is structured and how priorities are determined in each part of the council.

It will involve making our services more targeted, with a greater emphasis on the vulnerable who need our support and on enabling people to be independent and enjoy the benefits that can bring.

It will also mean working more effectively across the organisation, delivering a single, joined-up service to our customers that isn't hampered by some of our current structures. Our current directorates will no longer exist and they will be replaced with a structure that is tailored to support the new organisation in achieving its aims.

We will also seek to build closer, more effective working arrangements with partner organisations. The council recognises public services should be more joined-up as a whole and will be proactive in creating and taking opportunities to work more closely and efficiently with other organisations that share our goals.

Our financial model will look very different to how it does now, too. We are already seeing the beginnings of a new funding relationship with central Government, with our core funding reducing but new opportunities to secure money for one-off landmark projects (often referred to as 'capital' projects). Meanwhile, we will look to maintain and, where it makes sense to do so, build the income we receive from partners for delivering our services.

Last but not least, our new organisation will be one with ambition. We will strive to do things to the best standard within the resources available, focusing on outcomes that allow us to measure the difference we make to the communities we serve. We will aim to be the best council in the country because we believe in getting the best for the people of Lancashire.

## **Our employees**

The council's future success will continue to rely on its employees, both through their dedication to delivering services on a daily basis, and for their wider contribution to improving the council.

Every individual who works for the council has a range of experience and skills, all of which should be valued and recognised by managers and colleagues alike. We'll aspire to be an organisation where people not only feel comfortable expressing their ideas for improvement, but where it's the norm to innovate and put good ideas into practice.

## **1.3 Priority Neighbourhoods Approach**

Reducing health inequalities which involves reducing the gap in health and life expectancy between communities in different parts of Lancashire is a key issue for the county council and will be a key strategic focus for service delivery going forward.

In response to the findings of a national report by Professor Sir Michael Marmot called 'Fair Society Healthy Lives' (2010) we have developed a priority neighbourhood approach to providing highway, transport environment and public protection services.

Priority Neighbourhoods is a geographically targeted approach concerned with helping the county council make a significant contribution to building resilience within deprived neighbourhoods. Our priority neighbourhoods are those which include the 10% most deprived communities in the county (Index of Multiple Deprivation 2010). The essence of the Priority Neighbourhood approach is the establishment of an enhanced level of community responsiveness as the norm in these geographical areas.

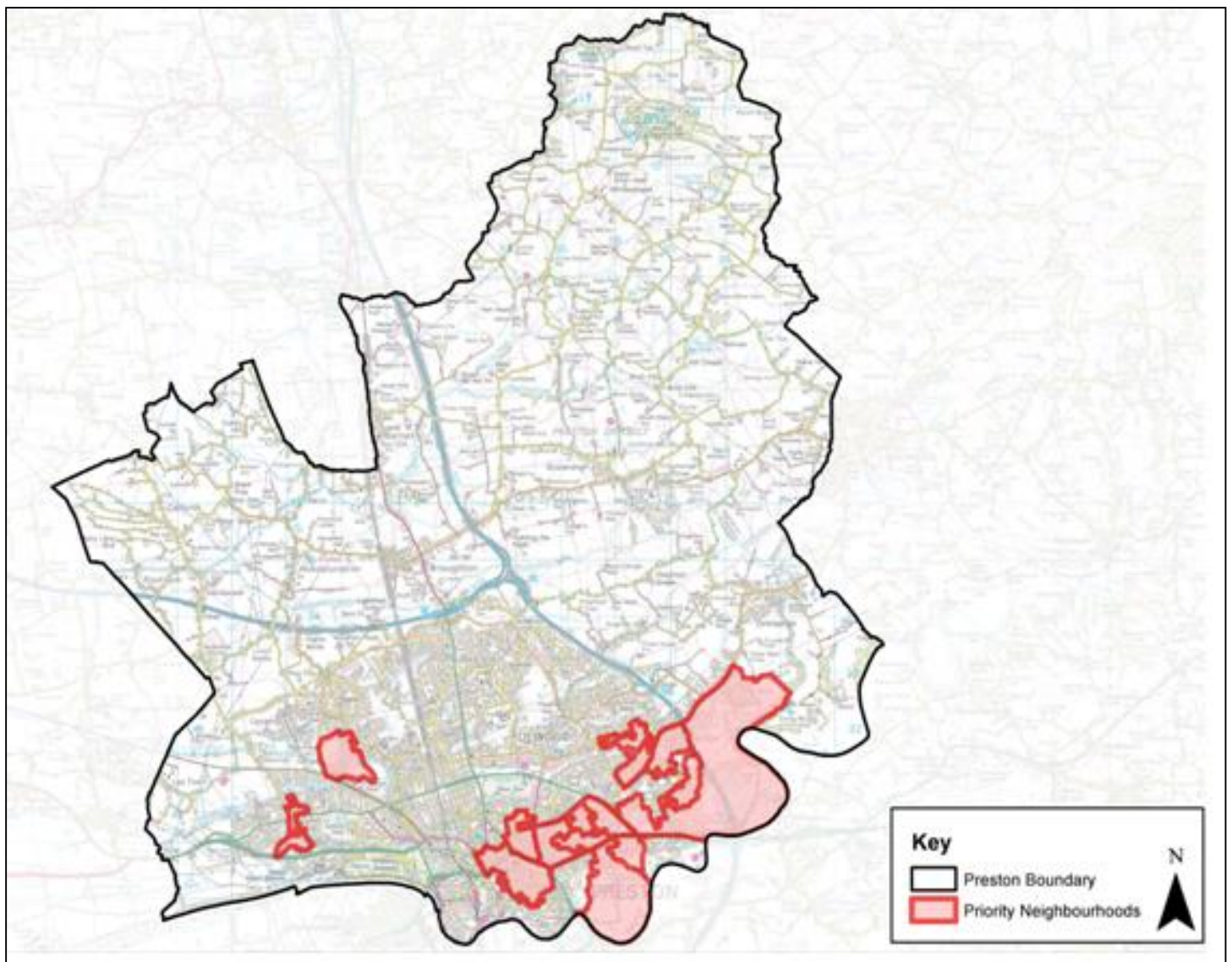
Research has found that some deprived communities seem to have characteristics which protect local people from the negative health effects of deprivation and social inequality. These characteristics, that seem to make people resilient to the way deprivation affects health, include having pride and satisfaction with local areas, feeling safe and having an ability to influence decisions in the community. The ability of communities to influence the way in which we respond to service requests is a key to fostering a belief that communities can influence their day to day existence.

Our approach involves reacting quickly and positively to service issues in deprived areas to deliver services which are important to local people and allowing local people to influence what and how

services are delivered. It involves listening and responding to community concerns positively, automatically, flexibly and quickly. We will continue to work closely with local Members to deal with local issues, making our services more accessible and helping local people see they can make a difference by informing us of their issues. We will not be able to deliver every request, however we will respond swiftly with an honest and appropriate answer. Where we cannot solve issues we will explain why this is.

In Preston the following wards contain priority neighbourhood areas, this is mapped out below:

- Larches
- Ingol
- Ribbleton
- St Matthew's
- St George's
- Town Centre
- Brookfield
- Fishwick



## 1.4 Local Transport Plan

The county council's third Local Transport Plan (LTP3) sets out our transport priorities until 2021. It establishes our commitment to support Lancashire's economy and to tackle deep-seated inequalities in people's lives, revitalise our communities, and provide safe, high-quality neighbourhoods.

As part of this, and as the highway and transport authority for Lancashire, we are producing a set of Highways and Transport Masterplans that will cover all 12 districts of the county.

Once completed, these masterplans will set out a comprehensive highways and transport strategy for the whole county, linking economic development, spatial planning and public health priorities to the wider policy objectives of the county council.

Each masterplan will:

- Outline current issues affecting our highways and transport networks
- Look at the impact of plans and policies in future years, including the Lancashire Enterprise Partnership's Strategic Economic Plan and Local Development Framework Core Strategies/Local Plans
- Propose measures that the county council consider are needed to support future growth, and development and improve our communities
- Outline funding mechanisms, delivery programmes and associated risks

Rather than produce a masterplan for each district, the council will create five masterplans that reflect the travel areas identified in the Local Transport Plan. All five masterplans will integrate with each other to ensure that the whole of Lancashire sees economic and housing growth that will maximise its potential.

Preston is integral to the Central Lancashire Highways and Transport Masterplan together with Chorley and South Ribble. The plans are at different stages of development and the Central Lancashire Masterplan, approved in March 2013, is currently in the delivery stage. The following link can be used to access the approved Masterplan: [Central Lancashire Masterplan](#)

Central government funding processes for local transport infrastructure are changing with effect from April 2015. The Local Growth Fund includes a significant amount of local transport funding from the outset. In addition to funding for local major transport schemes, over 40% of the Integrated Transport Block grant funding currently received directly by local transport authorities will be included, thereby reducing the amount of guaranteed funding going forward. Access to the Local Growth Fund is competitive and secured through a Growth Deal negotiated between the Government and the Local Enterprise Partnership. The Lancashire Growth Deal agreed with the Government in July 2014 includes a £58m contribution to the Preston Western Distributor, a £15.5m contribution to the Broughton Bypass and a £6m contribution towards Preston city centre improvements comprising an extension of the Fishergate 'shared-space' scheme to the bus station.

In 2015/16 the following projects will be in the delivery phase, the full list of schemes can be found in the approved masterplan which can be accessed via the link given above:



Project Name and description	Delivered by	Project Start (Year)	Project Completion (Year)
<p><b>Preston Western Distributor</b> Construction of a new dual carriageway road between the M55 near Bartle and the A583/A584 near Lea Gate to support delivery of the North West Preston strategic housing location and improve access to the Strategic Road Network from the Enterprise Zone at Warton. The road will include a new full junction on the M55.</p>	LCC	2017/18	2019/20
<p><b>Broughton Bypass</b> A bypass of Broughton to provide critical congestion relief on the A6 north of Preston in support of future development proposals.</p>	LCC	2015/16	2016/17
<p><b>Preston Bus Station</b> LCC will work with Preston City Council to develop proposals for new bus station/interchange facilities within the city centre and to improve accessibility and interchange between bus and rail services. This work will also include the provision of a new Youth Zone on the site as well as a series of structural repair works</p>	LCC	2015/16	2017/18
<p><b>Preston City Centre Improvements</b> An extension of the Fishergate 'shared-space' scheme from Lune Street along Fishergate, Church Street and Lancaster Road to the bus station</p>	LCC	2015/16	2017/18
<p><b>Public Transport Priority Network</b> LCC will work with bus operators to establish a comprehensive network of bus rapid transit corridors potentially linked to and supported by park and ride sites in locations where demand is most evident. This is an ongoing rolling programme across Chorley, South Ribble and Preston</p>	LCC	2012/13	2018/19

There are also some countywide projects that will be delivered to compliment the Masterplans, the following table details these projects for delivery during 2015/16:

Project Name	Project Start (Year)	Project Completion (Year)
Urban Traffic Management and Control System Upgrade	2011/12	2015/16
Bus Stop Compliance	2011/12	Ongoing

### 1.5 Approved Capital Projects from 2014/15 for Delivery in 2015/16

During 2014/15 a number of projects in Preston were unable to be completed before the end of the financial year. These projects will be completed in 2015/16, and will not affect the delivery or allocation of funds in the approved programme for 2015/16.

The following table gives details of these projects:

Project/scheme name	Treatment	Programme
The agreed list of carry forward capital schemes will be added into this table once it has been finalised in June 2015		

## 2. HIGHWAY SERVICES

### 2.1 Road and Street Maintenance

The county council has a statutory responsibility to maintain the public highway network and we use regular inspections to identify roads that need repairing. We also respond quickly where there is a danger to road users caused by damage to roads. We have a response team available to make the roads safe as a matter of urgency following any emergencies or dangerous hazards on the highway.

In accordance with the highways service offer, there will be a number of differences in how these services are now delivered. The key differences are as follows:

- Not all highway reports received from elected members and the public will result in works being undertaken. Many will result in no further action as the nature of the problem does not meet defect intervention levels.
- A change to defect intervention levels has been approved that will result in less defects being identified in the footway. The intervention level has changed from 20mm to 25mm for the majority of the footway network (with the exception of busy town centre shopping areas, and footways linking interchanges between different modes of transport).
- Traffic signs and road marking maintenance will be prioritised to ensure that regulations are enforceable.
- Requests for traffic regulation orders such as residential parking/waiting restrictions, residents parking and speed limit orders will be prioritised according to their ability to deliver casualty reduction, strategic traffic management, economic growth, or environmental improvement objectives. This will result in many requests not being progressed.
- The target response time to enquiries and service requests will increase from 10 to 20 working days. All enquirers will be expected to use on-line and electronic media, where those channels are available, to track progress of any investigation and repair activity.

#### Highways Contact Information

In order to ensure that management capacity in the highways service is used most effectively, defect reports and routine enquiries should be made through the following channels:

1. Telephone: 0300 123 6780, this is a local call rate number, and the line is open 8am to 5pm, Monday to Friday.
2. Email: [highways@lancashire.gov.uk](mailto:highways@lancashire.gov.uk). You will be issued with a reference number and if you require an update you can telephone or email and an update will be provided.
3. Report It: Use our online reporting system at [www.lancashire.gov.uk/roads](http://www.lancashire.gov.uk/roads). This map based system will allow you to easily and quickly tell us where and what the issue is. You will be provided with a unique reference number, which you can use to log into the system and track the progress of your report at any time.

For most reports and enquiries a team based approach will be used to support county councillors and liaise with district and parish councils rather than through a designated manager. As indicated above, our service offer is to assess and respond to requests for service within 15 working days. Our aim is to provide quicker response times wherever possible however service users are asked to bear in mind the overarching target response time when using the contact channels for updates and progress tracking.

Outside of our office working hours, the highways service can be accessed for emergencies only and by contacting Lancashire Police on 101.

## 2015/16 Highway Schemes

The following tables list the highway schemes from our capital programme which are due to be delivered in Preston in 2015/16. They detail the quarter in which we aim to complete them however it is important to note that the programmes could evolve and change within year to react and deal with any unforeseen situations that may arise.

The timescales for delivery of schemes have been given as the quarter within which we anticipate the works will be completed. The quarters refer to the following periods:

- **Quarter 1 : 1 April – 30 June**
- **Quarter 2 : 1 July – 30 September**
- **Quarter 3 : 1 October – 31 December**
- **Quarter 4 : 1 January – 31 March**

<b>Maintenance of Highways Assets A, B and C Class Roads</b>					
<b>Priority</b>	<b>Road name</b>	<b>Location</b>	<b>Division</b>	<b>Treatment</b>	<b>Delivery quarter</b>
<b>Surface Dressing Programme</b>					
1	Blackpool Road	Tulketh Brow to Pedders Lane	Preston Central South/ Preston North West	Pre patch and surface dress	Quarter 1
2	Barton Lane	Jepps Lane to Langley Lane	Preston Rural	Surface dressing	Quarter 1
3	Garstang Road	From outside of number 218 to Lightfoot Lane	Preston North	Surface dressing	Quarter 1
4	Houghton Green Lane	Brabiner lane In to Eastway	Preston Rural	Surface dressing	Quarter 1
5	Longridge Road/Preston Road	Roundabout at Bluebell Way to Ribblesdale Drive	Preston East	Surface dressing	Quarter 1
6	Plungington Road	Lytham Road to Blackpool Road	Preston Central South	Surface dressing	Quarter 1
7	Walker Lane/ Bleasdale Lane	Boundary to boundary – Smithy Public House to Lower Core Lane	Preston Central South	Surface dressing	Quarter 1
<b>Carriageway Inlay Programme</b>					
1	B5269 Whittingham Lane	Between the Methodist church and the 30mph signs as you enter Goosnargh from Broughton	Preston Rural	Carriageway inlay	Quarter 2
<b>Pre Patching Programme</b>					
Programme of works to be determined					

**Maintenance of Highways Assets*****Urban Unclassified Roads***

Priority	Road name	Location	Division	Treatment	Delivery quarter
1	Ribbleton North area surface dressing	Various in Ribbleton North area	Preston East	Carriageway surface dressing	Quarter 1
2	Earl Street	Earl Street/Cheapside/Market Street	Preston City	Carriageway inlay	Quarter 1
3	East Cliff	Ribblesdale Place to Vicar's Bridge	Preston City	Carriageway inlay	Quarter 1
4	Bridge Road	Tulketh Road to Ecroyd Road	Preston Central South	Carriageway inlay	Quarter 2

**Maintenance of Highways Assets*****Urban Unclassified Pre Patching***

Road name	Location	Division	Treatment
<b>Countywide Capital Allocation</b>			
Programme of works to be determined			

**Maintenance of Highways Assets*****Rural Unclassified Roads***

Priority	Road name	Location	Division	Treatment	Delivery quarter
1	Beacon Fell Road	Crombleholme Road 300m east	Preston Rural	Carriageway strengthening/overlay	Quarter 3
2	Church Lane (Phase 1)	Button Street to Syke House Lane	Preston Rural	Surface dressing	Quarter 1
3	Snape Rake Lane	Bleasdale Road to camp entrance	Preston Rural	Overlay and side dress	Quarter 2

**Maintenance of Highways Assets*****Rural Unclassified Pre Patching***

Road name	Location	Division	Treatment
<b>Countywide Capital Allocation</b>			
Programme of works to be determined			

**Maintenance of Highways Assets****Footways**

Priority	Road name	Location	Division	Treatment	Delivery quarter
1	Main Sprit Weind	Syke Street to Sub Station	Preston City	Reconstruction	Quarter 1
2	Leyburn Close	Ambleside Road to the end	Preston East	Footway inlay	Quarter 1
3	Ribbleton Lane	Deepdale Road to St Mary's Street (east side)	Preston South East	Footway inlay	Quarter 1
4	Ribbleton Avenue	Floyd Road to number 241	Preston East	Footway inlay	Quarter 1
5	Oaktree Avenue	Tag Lane to Mayfield Avenue	Preston West	Footway inlay	Quarter 2
6	Conway Drive	Stour Lodge to Scotts Wood	Preston North	Footway inlay	Quarter 2
7	Elm Avenue	Birch Avenue to Clifton Avenue	Preston North West	Footway inlay	Quarter 3
8	Heather Grove	Gorse Grove to the end	Preston East	Footway inlay	Quarter 3
9	Southey Close	Levensgarth Avenue to the end including Levensgarth Avenue to Tiverton Close	Preston North East	Footway inlay	Quarter 3
10	Dunoon Close	From number 15 to the cul-de-sac end	Preston West	Footway inlay	Quarter 3

**Countywide Funding Allocations****Structural Defects**

Please contact Lancashire Highways at [highways@lancashire.gov.uk](mailto:highways@lancashire.gov.uk) to report any defects or other damage that you are aware of.

**Pre Patching**

Most roads scheduled for surface dressing require some 'pre patching' treatment. Pre patching is best completed a year in advance of the scheduled resurfacing works.

**Public Rights of Way Network**

In recognition of the importance of the public rights of way network and the significant contribution it makes to health and wellbeing a countywide capital allocation will be made available in 2015/16 to invest in the network.

## Advanced Design Work Funding

A countywide allocation will be made available to support the development of the 2016/17 capital programme.

## Geotechnics Funding

A countywide allocation will be made available to support geotechnical investigations that are required to confirm the final design of capital projects.

## Traffic Signals Funding

A countywide allocation has been made available to replace expired traffic signal equipment across the county. The scheme for Preston is shown in section 2.4.

## Street Services Agreement (Public Realm)

The ongoing development and implementation of a Street Services Agreement between Lancashire County Council and Preston City Council has forged a much stronger joint working relationship between the two councils. Under this agreement Preston City Council has taken on the responsibility for delivering a programme of additional cyclic maintenance activities on behalf of Lancashire County Council. This includes:

- Maintenance of grassed areas within the highway including verges and roundabouts
- Management and maintenance of shrubs within the highway
- Control of weed growth on the highway in parts of the city
- Removal of fallen leaves accumulating in the highway

Lancashire County Council provides financial resources to the city council to provide these services. The Street Services Agreement also permits Preston City Council to undertake a number of other activities on the highway including:

- Managing and administering residents parking schemes
- Highway, traffic, cycling and pedestrianisation schemes (subject to approval from Lancashire County Council)

Discussions are continuing with Preston City Council to make the Street Services Agreement more district-specific over time. There will be opportunities through the commissioning process for county councillors and district councillors to help influence the services provided through the agreement.

## 2.2 Street Lighting

Lancashire County Council manages and maintains almost 20,000 street lights and illuminated signs in Preston. This includes the day to day repairs of faults to street lighting and other lighting structures, as well as renewal schemes and new installations.

We have a comprehensive fault reporting system to make sure that repairs to lighting are made as quickly as possible. An emergency call out should be responded to within one hour and non-emergency repairs should be attended to within five working days.

To ensure that the lighting stock across Lancashire is managed to minimise the consumption of energy, whilst maintaining adequate lighting of the highway network, end of life existing lighting will be replaced with LED units over a five year maintenance cycle. Where this is not possible the units will be operated at a 50% light level all night. This is a service change as currently on residential

roads those units that are dimmed do so between 22:00hrs and 06:30hrs, and on main traffic routes dimming takes place between 19:00hrs and 07:00hrs.

## 2.3 Flood Risk Management and Drainage

Lancashire County Council has responsibility for highway drainage under the Highways Act 1980. As a Lead Local Flood Authority under the Flood and Water Management Act (FaWMA) 2010 the council has a broader responsibility for local flood risk management in Lancashire.

The service offer for 2015/16 will be as follows:

- Continue to implement the Flood Risk Management Strategy Action Plan.
- Contribute to the designation of structures as appropriate, and the maintenance of a record and register for assets and features that affect flood risk, as held by Asset Management service.
- Investigate flooding where necessary and appropriate (where this affects 5 or more properties in a single location).
- Act as a statutory consultee to local planning authorities.
- Fulfil the Lead Local Flood Authority role of promoting partnership working with other Risk Management Authorities, including the development of bids for external funding for flood alleviation schemes.
- Issuing consents to control work in ordinary watercourses where the flow may be affected.
- Enforcement to clear watercourses of obstructions, or of unconsented works, so that flow is not impeded and flood risk is reduced.
- Base the frequency of cyclic maintenance of highway gullies on need. This frequency will be fully defined once more on-site information is gathered and local conditions are understood.
- Undertake drainage defect repair works primarily informed through the cyclic maintenance programme, focussing attention on the areas of greatest need enabling work programmes to be efficiently managed to ensure greatest productivity
- Prioritise reactive maintenance works to where highway drainage system defects are causing significant difficulties to the travelling public or affecting property.

This will differ from the 2014/15 service offer in the following ways;

- Proactive engagement in flood investigations that do not meet the policy criteria of 5 or more affected properties in a single location will cease.
- Proactive identification of flood assets for the record/register will cease.
- Resources will be focused on delivering specific statutory processes such as issuing consents, and fulfilling the statutory consultee role. As a consequence, the capacity for officers to devote time to developing potential flood alleviation schemes and bids may reduce.
- Frequency of cyclic maintenance for gullies will change from a minimum of one visit to each gully every 12 months to a maintenance schedule based entirely on need. It is anticipated that the majority of gullies will be visited once every 18 months, however some locations may experience a longer interval between visits where local conditions permit.
- Not all reports of standing water on the highway will result in works taking place.



The following table details the capital projects planned to be completed in Preston in 2015/16:

<b>Maintenance of Highways Assets</b>				
<i>Drainage</i>				
<b>Priority</b>	<b>Location</b>	<b>Division</b>	<b>Treatment</b>	<b>Delivery quarter</b>
1	Broughton Playing Fields	Preston Rural	Drainage improvement and flood relief work to reduce flooding to highways and property	Quarter 4

## 2.4 Traffic Signals

The county council manages Lancashire's traffic control systems, including traffic lights, signal controlled pedestrian crossings and electronic road signs.

This service supports the network management duty by maintaining and optimising the performance of traffic signal installations at key and sensitive locations on the network. The service also undertakes design and implementation of new installations.

Under the service offer for 2015/16, the chargeable rectification of equipment failures will be prioritised towards those junctions where safety or major delay risks are most acute; so as to optimise network performance for the available investment. This may mean that repairs at more lightly trafficked junctions, where minor delays are being incurred, may take longer to be implemented.

The county council uses specialist contractors to maintain these complex systems. The contract includes fault response targets against which performance is measured.

- Emergency faults are to be attended within 2 hours and made safe and operational (possibly temporarily) as soon as possible.
- Urgent faults are to be attended within 4 hours and repaired within 2 hours of attendance.
- Non-urgent faults are to be attended within 8 working hours and repaired within 2 hours of attendance.

In addition a countywide capital allocation has been allocated in 2015/16 to assist in replacing expired traffic signal equipment. The following site will be prioritised for attention within 2015/16:

<b>Maintenance of Highways Assets</b>			
<i>Traffic Signals</i>			
<b>Road names</b>	<b>Division</b>	<b>Treatment</b>	<b>Delivery quarter</b>
F3047 Fylde Road/Water Lane/Tulketh Brow/Aqueduct Street	Preston North West	Traffic signal equipment refurbishment	Quarter 2

## 2.5 Keeping Traffic Moving

The county council is responsible for keeping traffic moving around the road network and managing congestion in various ways. The revenue stream below includes activity related to traffic regulation, the management of street works, and sustainable travel.

### Design and implementation of traffic regulation orders

The county council is responsible for Traffic Regulation Orders (TROs) which place a restriction on the highway, including speed limits, resident parking zones, limited waiting restrictions including double/single yellow lines and 'pay and display' parking. The above allocation includes provision for the cost of advertisement of TRO's. In accordance with the 2015/16 service offer, TRO's will be considered in situations where there is an existing injury accident record and where implementation of the measure would be expected to bring casualty reduction benefits. Where resources allow, TRO's that contribute to better strategic traffic management, economic growth or significant environmental improvement will also be considered.

### Co-ordination of works in the highway

Under the New Roads and Street Works Act 1991 the county council has a general duty to co-ordinate works. The undertakers of works have a general duty to co-operate in this process. There are in the region of 30,000 works undertaken on Lancashire's highways each year, many of them by utility companies, as well as highway maintenance and improvement works carried out by the county council. Until March 2015, anyone wishing to carry out works in the highway had to submit formal notices to the county council, and our role was to use best endeavours to ensure works were co-ordinated so as to minimise disruption to the travelling public. In March 2015 the county council implemented a permit scheme that allows us much greater control over when and how works can be carried out.

[Click here to see a list of the latest roadworks in this district](#)

## Sustainable travel

During 2015/16, sustainable travel projects will:

- Support economic development by helping to manage transport demand and removing unnecessary or short local car journeys from the network, freeing up capacity to allow more reliable journey times for both people and goods
- Improve access to employment, training and services for communities by enabling low cost trips by cycling, walking, public transport and car sharing
- Work in partnership with health colleagues to improve lifestyle choices and health outcomes by enabling residents to walk and cycle, and improve air quality and road safety;
- Offer information to support the rural population in planning and making more sustainable journeys, thus improving their access to services and opportunities
- Engage with businesses and organisations

From 2016/17, the sustainable travel output will be focussed on cycling; including cycling scheme development, cycling capital programme development, and provision of advice on cycling issues for development control and planning applications. Activities associated with business engagement will be undertaken as part of the development control process.

## Cycling

The county council is committed to investing money and resources in new cycle facilities throughout the county. Cycling has a range of benefits across different policy areas, including health, physical activity, transport, visitor economy, and air quality. It helps reduce congestion, offers a low cost form of transport, enabling people without a car to access a wider range of services and employment than would otherwise be the case, and it can also help improve quality of life. Cycling is a key part of the Highways and Transport Masterplans.

In October 2014 the Government published their draft Cycling and Walking Delivery Plan (the final document is due to be published in 2015). The Delivery Plan seeks to double cycle use by 2025 by entering into partnership agreements with public sector bodies. The county council is likely to request such a partnership with the Government whereby in return for an agreed plan of action we will be given priority consideration for any available funding. Such a partnership will support the county council's new cycle strategy currently being developed in conjunction with partners in public health and sports development.

Cycle safety is a key concern both locally and nationally and money has been allocated to schemes to improve cycle safety across the county in 2015-16.

As well as cycle specific schemes new road schemes and developments provide opportunity to improve provision for cycling. New roads will have cycling provision as appropriate. We will also be working with British Cycling to extend the Sky Ride programme to the whole of the county in 2015. A new cycling website for the county is being developed in partnership with Visit Lancashire.

Where good cycle provision exists in the county cycle use has grown. For example between 2009 and 2013 cycle flows on the cycle track south east of the Millennium Bridge in Lancaster grew by 32% and the Old Tram-Road Bridge in Preston by 23%. In 2012 around 14% of staff at Lancaster University cycled to work. Preston Guild Wheel has recorded 1,000 cyclists at a count point in a day.

The Guild Wheel has helped raised the profile of cycling in Preston, and approximately 1,000 cyclists have been recorded using the Guild Wheel at a count point in one day. A campaign to encourage considerate cycling on the Guild Wheel will be carried out in 2015.

Subject to the agreement of Network Rail the cycle path into Preston railway station and Fishergate Centre from the south side of the river will be completed.

There is the potential of future developer funding for improvements for cycle routes on the north-west side of Preston. The cycle path on the old railway to Grimsargh provides an opportunity to improve cycle facilities in the east of the city. There is developer funding to extend the cycle path to Skeffington Road and to Grimsargh and to improve cycle and pedestrian facilities at the junction of Blackpool Road and Sir Tom Finney Way.

## 2.6 Highway Improvements

Highway improvements may be made to improve road safety, or the local environment, reduce congestion, or accommodate development. Privately funded developments may need changes to the road network to allow safe access to and from a development, and may incorporate other highway work. Developers pay for highway works either through Section 278 agreements under the Highways Act, or Section 106 agreements under the Town and Country's Planning Act.

## Section 106 schemes

The following S106 schemes are due to be carried out in Preston in 2015/16:

Project name	Division	Brief description
Blackpool Road/Sir Tom Finney Way	Preston Central North	Crossings improvements at Blackpool Road/Sir Tom Finney Way junction, and linking the cycle paths.
Grimsargh Church Cycle Path	Preston Rural	Extension of the cycle path from the B6243 at Skew Bridge to Grimsargh Church

## Section 278 schemes

There are currently no S278 schemes being progressed in Preston.

## Community Infrastructure Levy (CIL)

Preston City Council has adopted their CIL charging schedule. Their charging schedule document can be accessed on their website here: [Preston City Council CIL charging schedule](#)

## 2.7 Severe Weather Response

The county council has a duty to make sure that the effects of severe weather do not make our roads and footways dangerous to use. Severe weather can include a number of different conditions including high winds and heavy rainfall that can significantly affect the highway network throughout the year.

Severe weather incidents can affect any part of the network at any time and on-going cyclic maintenance programmes such as gully emptying and tree felling help to avoid issues arising during periods of severe weather. Where issues do arise these are dealt with through a responsive service, including an out of hours emergency response, co-ordinated within the teams delivering services within Preston.

The principal element of the severe weather services provided is focussed on Winter Maintenance. As part of our winter service we work to reduce the effect of ice and snow on roads. A significant element of this involves the precautionary spreading of salt when weather forecasts predict there is a risk of cold weather.

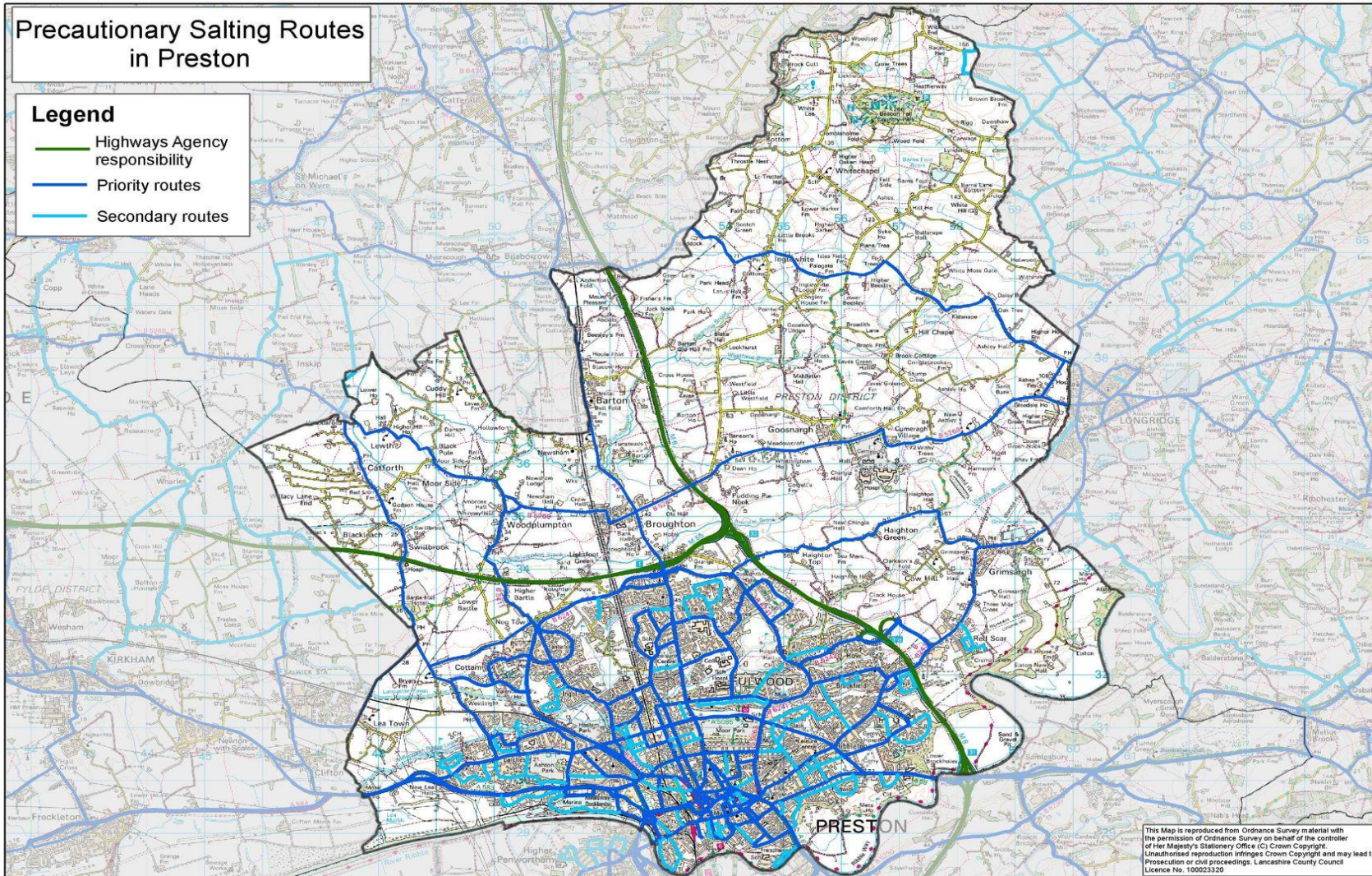
A snow clearing service is also provided in snow conditions through the deployment of snow ploughs. These functions are supported under the current mutual aid working arrangements with Preston City Council who assist in delivering the severe weather service by spreading grit from salt stocks provided by Lancashire County Council.

As the road network is so large, we have identified a priority road network (the main roads in the county) which we will treat first. During long periods of freezing conditions, a secondary road network will also be treated, but only during daylight hours and after the clearance of all higher priority roads. Also during long periods of freezing conditions we will treat the most important footways during daylight hours. We also supply salt or other appropriate material for the numerous grit bins and salt piles that are located around the county.

The table below shows the length of network in Preston. This is mapped out overleaf.

<b>Preston</b>	<b>Length of road treated</b>
Priority road network	173 km
Secondary road network	48 km

During 2015/16 a route optimisation project is being delivered in conjunction with the Meteorological Office. This work will establish the most efficient and effective way of traveling and treating the priority routes across Lancashire. This will take account of route travel times, topographical and climatic factors affecting the gritting routes and is expected to achieve financial and operational efficiencies without reducing the priority network. It is intended that the new gritting routes informed by this process will be available for implementation at the start of the 2015/16 winter season.



## 2.8 Bridges and Highway Structures

Many of the bridges in Lancashire are owned by the county council. However, there are a number of private bridge owners in the county such as Network Rail and the Canal and River Trust. There are also a significant number of private bridges, often with public rights of access over them.

The county council inspects the Lancashire County Council owned bridges on the road network and carries out maintenance and strengthening work where it is most needed. In addition repairs to bridges owned by the county council are undertaken where they have been damaged by vehicles colliding with the bridge or by vandalism.

Lancashire County Council's highway structures inventory in Preston comprises of:

Type	Number
Bridges	98
Subways	3
Highway footbridges	8
Retaining walls	33
Major rural footbridges	27
Minor rural footbridges	106
Miscellaneous structures	10
<b>Total</b>	<b>285</b>

The number of retaining walls stated in the table above is the total number of walls in the district where ownership is accepted to be the county council's responsibility. Other retaining wall inventory is being collected and ownership of these walls would be established before any work is undertaken.

The number of minor rural footbridges is the current known number, however it is possible that there are further footbridges in the district which haven't been identified as yet. Once identified by the bridges team or reported by members of the public they will be added to the inventory record.

Bridge inspections provide the most up-to-date data on the condition of our highway structures. There are two Bridge Condition Indicators, BCI (Critical) for high risk elements, and BCI (Average) for all elements of the structure. Prioritisation of bridge maintenance schemes is given to structures with a low BCI (Critical). There will also be circumstances such as where structural defects may have a direct impact on the load carrying capacity; where structures have low strength parapets at risk critical sites; where structures have safety related defects; and structures with defects which, if not remedied, are likely to become more expensive problems.

The average value of the bridge condition on a district and county basis is called the Bridge Stock Condition Indicator (BSCI Average). The current average BSCI (Average) for the whole of the county is 89.42 (January 2015) which indicates stock in "good" condition. It is anticipated that in the medium term, funding allocations may not be sufficient to maintain the BSCI (Average) at its current level, and as a consequence the condition of the stock countywide may reduce slightly. It is however intended to maintain the county bridges stock at the overall "good" condition level.

For Preston the current BSCI (average) is 86.45 (January 2015), indicating a stock in good condition.

The following list gives the details of the bridges and highway structures capital work in Preston. This list includes the provision for reactive in-year work that will be generated through the ongoing inspection of bridges and highway structures and any unforeseen situation that might arise.

<b>Maintenance of Highways Assets</b>				
<i>Bridges</i>				
<b>Scheme name</b>	<b>Location</b>	<b>Division</b>	<b>Details</b>	<b>Delivery quarter</b>
9588F1 Tun Brook Wood Footbridge	Footpath 12, Grimsargh	Preston East/ Preston Rural	Repair collapsed footbridge	Quarter 2
4385B1 Fishergate Railway Assessment - Network Rail	C329 Fishergate Hill	Preston City/ Preston Central South	Contribution to Network Rail for assessment of the bridge's load carrying capacity	Quarter 4
4429U1 Ringway Underpass	A59 Ringway	Preston City	Bridge waterproofing	Quarter 2
1266B1 Penwortham New Principal Bridge Inspection	A59 Liverpool Road	Preston City	Principal bridge inspection	Quarter 4
Bridge Structural Maintenance	Various as necessary	Various as necessary	Structural maintenance works to bridges	Quarter 4
Retaining Wall Structural Maintenance	Various as necessary	Various as necessary	Structural maintenance works to retaining walls	Quarter 4
Footbridge Structural Maintenance	Various as necessary	Various as necessary	Footbridge repairs/ replacements identified by public complaints or bridge inspections on the larger footbridges	Quarter 4
Parapet Risk Ranking and Programme Investigation	Various as necessary	Various as necessary	Parapet risk ranking and programme investigation	Quarter 4
Strategic Route Principal Bridge Inspections	Various as necessary	Various as necessary	Strategic route principal bridge inspections	Quarter 4
Post Tension Special Inspection Reviews	Various as necessary	Various as necessary	Review of post-tensioned pre-stressed concrete bridges for potential deterioration	Quarter 4
Structural Reviews	Various as necessary	Various as necessary	Structural reviews and assessments	Quarter 4



## 2.9 Parking

Lancashire Parking Services (LPS) is responsible for the enforcement of parking restrictions on the highway. Civil Enforcement Officers issue Penalty Charge Notices (PCNs) to vehicles parked in breach of these parking restrictions. There is also a back office team which undertake the processing of the PCNs, and the management of payments, challenges and appeals, in accordance with statutory procedures and timescales.

LPS is not responsible for PCNs issued in district council car parks or on private car parks. District council car parks are enforced by Preston City Council.

Parking enforcement hours have recently reduced from 70,000 to 63,000 hours annually and this reduced level constitutes the service offer for 2015/16. The impact of this will continue to be offset by better targeting of enforcement, and this approach of targeting enforcement towards areas of significant and persistent parking transgressions will be further refined, meaning rural and some urban areas will receive little or no enforcement.

In Preston, a total number of 12,812 Penalty Charge Notices (PCNs) and Warning Notices were issued from 1 April 2014 to 31 March 2015.

## 2.10 Property Services: Building, Design and Construction Group

The county council is responsible for maintaining around 1,200 properties in Lancashire, and we manage an annual improvement programme of £50 million for building construction projects, along with the authority's annual building repair, maintenance and management programmes.

### 2013/14 to 2015/16 capital programme

The following table lists the capital projects that remain live within 2015/16 in Preston, and shows the gross anticipated out turn costs, and their current status. Within the programme there are a number of individual projects which are awaiting the results of detailed option appraisals, and approval by the appropriate Cabinet Member, together with a number of general improvement programmes against which detailed schemes have not yet been determined by the relevant directorates. Updates will be provided during the course of the financial year as further projects and programmes are determined and approved.

Building Design and Construction Group			
Starting year	Location	Work description	Current status
2015/16	Preston County Hall Old Building	Various internal refurbishment works	Projects in design, and on site, work planned to be completed during 2015/16 financial year
2015/16	Preston Deepdale Infant and Junior Primary School	Adaptations to facilitate amalgamation	Project in design, work planned to commence July 2015
2015/16	Preston Tulketh High School	Demolition of former high school prior to disposal	Project in design, work planned to commence June 2015
2014/15	Preston Sir Tom Finney High School	Relocation of a secondary special school to former City of Preston High School	Project on site, work due to complete by April 2015

**Retained repair and maintenance programme:**

- **Reactive maintenance**

Reactive maintenance relates to reactive and emergency maintenance needs. During 2014/15 the number of orders in respect of this type of work in Preston was approximately 3,125.

- **Cyclical maintenance**

Cyclical maintenance is a planned programme of maintenance (monthly, quarterly, or annually depending on the equipment) to mechanical and electrical systems within the buildings portfolio to ensure they meet current legislative requirements and perform consistently (for example - boiler plant, fire and intruder alarms, lifts, pressure systems, portable appliances and fixed electrical installation testing).

- **Planned maintenance**

Planned maintenance work is prioritised and is based on 'priority one' condition information held on the corporate property asset management system. The work is allocated on a needs basis rather than an allocation per district and the programme will be agreed in late spring 2015.

### 3. TRANSPORT SERVICES

The county council will work with bus and rail companies and district councils to develop services and improve passenger facilities.

With over 4.5 million passenger users annually and a further 1.3 million interchanges, Preston is the busiest rail station in the North West together with Manchester and Liverpool city centres. The station is a critical asset for the city and also acts as a gateway to Lancashire and for communities further north for local, regional and national connectivity. However, the station fabric has seen little investment in recent years resulting in a poor passenger experience and preventing the station from contributing towards the wider commercial development of the city centre. It is therefore vital that the station is transformed into a modern, 21<sup>st</sup> Century facility in support of wider economic growth aspirations across Lancashire in advance of HS2 becoming operational. The county council in partnership with Preston City Council has commissioned a piece of work to develop a Masterplan that will set out how the station can be reconfigured to meet user needs and connect appropriately with the city centre, and to explore how associated and/or adjacent development can be stimulated to help realise the city's growth ambitions in developing the station as a key strategic gateway. The study is expected to report in May 2015.

Proposed public transport improvement schemes in Preston include:

- The development of a bus routing and interchange strategy for Preston City centre that will assist in underpinning the regeneration of the city retail and employment core.
- A stored travel rights Smart Card scheme will be introduced in 2015/16. Under this scheme, money (up to £50) is stored on the smart card which may then be used to make payment for tickets on any participating bus operator journey. Top ups will only initially be able to be made on-bus but, in due course, will be also be available at major bus stations, on-line and certain in retailers. The scheme will be marketed under the name of NoWStar and subject to final agreement with the major bus operators, the scheme will be introduced in June 2015.

Proposed public transport and local centre improvements under the Preston, South Ribble and Lancashire City Deal project include:

#### **Samlesbury to Warton via City Centre**

Local Centre Improvement plan for New Hall Lane: Preston City Council are currently undertaking consultation on a plan for proposed works to commence during quarter 4 of 2015/16. The proposal will reallocate road space and improve the public realm of New Hall Lane local centre in order to meet the needs of the local community. It will maintain the route as a key gateway to Preston whilst improving public transport opportunities and promoting economic regeneration. The current estimated cost of works is in the region of £1.6million.

Priority Public Transport Improvements: The route management study for the corridor has highlighted a number of significant interventions that will improve the operation of the route for public transport into and out of the city. The key improvements identified are capacity and signal improvements to the New Hall Lane/London Road/Queens Street junction, a new signal controlled junction at New Hall Lane/Blackpool Road and additional signal improvements in the Riversway Area of Preston. It is currently anticipated that works to the A59/A6 junction will be carried out during the financial year starting in quarter 3 of 2015/16. The current estimated cost of works is £1.5million.

## Bamber Bridge to the City Centre

Local Centre Improvement plan for Bamber Bridge: South Ribble Borough Council are currently undertaking consultation on a plan for proposed works to commence during quarter 4 of 2015/16. The proposal will reallocate road space and improve the public realm of Bamber Bridge local centre in order to meet the needs of the local community. It will maintain the route as a key gateway to Preston whilst improving public transport opportunities and promoting economic regeneration. The current estimated cost of works is in the region of £1.6million.

Priority Public Transport Improvements: The route management study for the corridor has highlighted a number of significant interventions that will improve the operation of the route for public transport into and out of the city. The key improvements identified are capacity and signal improvements to junctions on the A6 into Preston. Most of this work has been completed however there are ongoing works at the A6/North Road/Ringway junction, cycleway and public realm improvements to the Ribbleton Lane A6 junction. It is currently anticipated that works to the A6 will be completed during the current financial year starting in quarter 3 of 2015/16. Works to improve the Ribbleton Lane/A6 junction will be considered under the Longridge to City Centre Public Transport Corridor study.

The county council will undertake a review of its financially supported public bus network during the next twelve months. This work will be based on a revised service monitoring criteria that takes into account the priorities set out in the Local Transport Plan and measures services in a more sustainable way.

In addition, the county council are considering the introduction of a policy which would see the provision of capital funding for the purchase/lease of minibuses or similar vehicles and their operation by parish councils to provide passenger transport services to their local communities. The county council would maintain the vehicles whilst the parish councils would cover the operating costs such as drivers, fuel and management of operations.

With effect from 1 April 2015, restructuring within the county council will see the formation of a new Public and Integrated Transport Service within Community Services which will include public transport, in-house passenger transport services, including SEN and Adult Services transport, together with Fleet Services. This will bring the management of all transport activity within one team and will allow better co-ordination of services being provided.

## 3.1 Bus Travel

In Preston there are currently 19 local bus services provided by the Environment Directorate under contract to different service providers which carry 86,595 passengers monthly and 1,039,150 passengers annually. The Preston passenger figures from 2014/15 are quoted below:

Service number	Route description	Average monthly passengers	Average annual passengers
4	(Preston) – Fulwood – Broughton – Whittingham – Longridge	13,333	160,000
12, 12A 13, 13A 112 114	Preston – New Longton – Longton Preston – Penwortham Preston – Leyland – Croston Preston – Whittle-le-Woods – Chorley	34,167	410,000

Service number	Route description	Average monthly passengers	Average annual passengers
12A	Preston – Longton – Ormskirk (Monday to Saturday evenings and Sundays)	2,250	27,000
14 114	Preston – Holme Slack Preston – Bamber Bridge (Monday to Saturday evenings and Sundays)	1,958	23,500
68	Preston – Lytham – Blackpool (Sunday - Thursday evenings)	1,750	21,000
75	Blackpool – Victoria Hospital – Poulton – Kirkham – Preston	8,333	100,000
109	Preston – Leyland – Chorley (Monday to Saturday evenings and Sundays)	5,500	66,000
113	Preston – Leyland – Ecclestone – Wigan (Monday to Saturday evenings)	2,708	32,500
115	Preston – Leyland – Chorley (Saturdays)	442	5,300
150, 151	Preston – Bamber Bridge (Daily Evenings)	2,333	28,000
217	Preston – Samlesbury - Mellor	71	850
180, 280, X80	Preston – Clitheroe – (Barnoldswick) – Skipton	13,750	165,000
<b>Total</b>		<b>86,595</b>	<b>1,039,150</b>

## Bus information

We provide information about bus services in a number of ways to reach as many people as we can, and these are via:

- Traveline - provides information by telephone (0871 200 22 33) and a web based journey planner [www.traveline-northwest.co.uk/](http://www.traveline-northwest.co.uk/)
- Mobile internet - [www.Nextbuses.Mobi](http://www.Nextbuses.Mobi) gives the location of local bus stops and the times of the next 5 or 6 buses at those stops
- SMS - a text message service that gives the next 3 or 4 buses from a chosen bus stop. Details can be found at: <http://www.traveline-northwest.co.uk/cms/content/MobileServices.xhtml>
- Bus timetables – we produce paper timetables for services provided by Lancashire County Council and work with bus companies to make sure information about their services is also available to passengers. All bus timetables can be downloaded from [www.lancashire.gov.uk/buses](http://www.lancashire.gov.uk/buses)
- Bus stop timetable information – in partnership and with funding from bus operators in Lancashire, we provide bus stop information at approximately 3500 stops as well as important locations such as hospitals, bus stations and interchanges throughout Lancashire.

## Concessionary travel

The English National Concessionary Travel Scheme (ENCTS) presently enables free local bus travel, throughout England, for senior citizens and disabled people on local bus services which operate between 09:30 and 23:00 Mondays to Fridays. There is no time restriction on Saturdays, Sundays or Bank Holidays. Blind and disabled pass holders currently travel before 09:30 Monday to Friday on payment of a flat fare of 50p.

We provide free ENCTS NoWcard smart cards to over 19,000 senior citizens and over 3,000 people with disabilities in Preston.

## School travel

The county council provides free home to school transport for some schoolchildren dependent upon the distance they live from their nearest suitable school. As a guide, schoolchildren generally would qualify if they attend their nearest suitable school and the distance from home is:

- Two miles or more by the shortest available walking route if under 8 years of age.
- Three miles or more if eight years old or over.

In Preston 1,075 free student bus passes were issued in 2014/15, including 65 bus passes where parents pay an annual Denominational Fee. There are currently 15 school service contracts and 49 commercial contracts which are provided on an existing public service, the total carried on both contract types is 408,500 passengers annually.

## Community transport services

A contract has been awarded to Lancashire Community Transport, a consortium of existing community transport operators, to provide a community transport service operated through a combination of minibuses and volunteer car schemes. The contract specifies a 20% increase in passenger numbers and the number of volunteers over the three year life of the contract. Travelcare, the county's in-house operator, will continue to provide dial-a-ride services in Lancaster, Fylde, Wyre, Hyndburn, Burnley, Pendle and Rawtenstall.

## Dial-a-Bus

Dial-a-bus services provide door-to-door travel using minibuses equipped with low steps and lifts enabling people who find it difficult to use steps or who are wheelchair users, to access the service.

Fares and times differ depending on the operator, but generally the Dial-a-Bus service operates between 09:30 and 14:30. Full details can be found by going to the [Community Transport Services](#) website.

## Community Car Services

Community Car Services have been developed primarily in rural areas where normal transport provision is sparse and irregular. They are designed to provide a service to anyone in the area who is unable to reasonably use conventional services regardless of disability.

Community Car Service in Preston is operated on behalf of the county council by Preston Community Transport. Fares are charged at the rate of 40p per mile for each journey and can be booked between the hours of 08.30 – 16.30 Monday to Friday. The contact number to book is 01772 516208.

## 3.2 Rail Travel

Preston is a major interchange for rail services and the busiest station in the North West together with Manchester and Liverpool city centres. The main north-south route is the West Coast Main Line, providing direct services to major UK destinations including London, Birmingham, Edinburgh, Glasgow, Manchester and Manchester Airport. Local services also interchange at Preston providing important commuting connections to and from the city, including Blackburn and East Lancashire, Blackpool, Lancaster, Manchester and Liverpool. Electrification of the routes between Preston, Manchester, Liverpool and Blackpool North is ongoing and scheduled for completion in December 2016, with modern electric trains already in operation on Trans-Pennine Express services between Scotland and Manchester Airport and refreshed electric trains due to be introduced between Liverpool and Preston this autumn.

Enhanced passenger, commercial and other facilities and services at Preston Railway Station are a long held aspiration for the county council. This ambition was set out in the Lancashire Enterprise Partnership's Strategic Economic Plan submitted to Government in 2014.

In conjunction with the delivery of the Fishergate Central Gateway highways and public realm scheme, the county council has worked closely with Virgin Trains and Network Rail to improve the forecourt of the railway station which mirrors the finish and quality of the Fishergate Central project, and now provides a seamless gateway for visitors arriving and departing the city by rail. Virgin Trains are planning some works, including improved links to the station car park, new cycle facilities, and a remodelled booking hall.

Welcome as these improvements are, they do not address the wider investment challenges associated with significant transformational change at and around the station. The county council is working with Network Rail and other partners, including the city council and the Enterprise Partnership, to work up a comprehensive, long-term and deliverable strategy for the station that takes into account Network Rail's strategic review of West Coast Main Line capacity, the role of the station in helping realise the growth ambitions of Preston, the role of the station as a strategic gateway to central Lancashire, and the wider sub-region and new services that may arise from HS2.

The county council also plays a big role in implementing the Government's 'Community Rail Development Strategy' (CRDS). The CRDS has the following four priorities:

- To increase patronage and revenue
- To seek the greater involvement of the local community
- To manage costs downwards
- To contribute to local social and economic regeneration

A key part of the strategy is the formal designation of railway lines, and there are two types of designation: The first is a 'Line designation' and this covers all aspects of the route and service and the second is a 'Service designation' which covers just the service and stations.

Community Rail is a government initiative developed to promote community involvement and ownership of rural and local railways. Community Rail Partnerships enable local communities to have a greater say in the local train service provided. Only a line that has an active Community Rail Partnership can be designated under the Community Rail Strategy, this designation allows the partnership to look at new ways to develop the service and to experiment with initiatives that would be difficult to achieve within the normal railway industry framework. The partnerships are grassroots organisations which aim to engage local railways more closely with the communities they serve.

There is currently one Community Rail Partnership in Preston: South Fylde Line Community Rail Partnership (SFLCRP). The designation covers the service operated between Preston and Blackpool South and the stations from Salwick to Blackpool South inclusive and the line between Kirkham North Junction and Blackpool South.

### 3.3 Road Safety

We aim to reduce casualties on Lancashire's roads by managing speed, educating and engaging with children and young people, and changing driver and rider behaviour through diversionary courses, as alternatives to prosecution and bespoke training courses. We also address road safety issues through safety related highways improvements.

The Lancashire Road Safety Strategy 2011-2020 sets out the priorities for road safety, and proposed approach and targets to reducing casualties in Lancashire until 2020.

#### Children and Young People – all ages

##### **Safer Schools Moodle**

All educational establishments across Lancashire can access and utilise road safety, bus safety and sustainable/active travel packages through the Safer Schools Moodle. This is a consistent interactive learning platform containing teacher resources in the form of lesson plans, activity sheets, toolkits, and hand-outs, and also contains information that parents can access and use with their children. During 2015/16 we will continue to develop and improve Moodle resources and encourage school communities to maximise their potential use. Development of the Moodle will allow less direct engagement in schools, with engagement concentrated on the areas of highest need, whilst allowing all schools access to a wide range of education resources.

The Moodle contains educational resources for children and young people from 0 – 25 years, including:

- **In Car Safety:** Information and resources to raise awareness among early years' practitioners, parents and carers of the dangers of inappropriate and incorrectly fitted car seats.
- **School Based Road Safety Education:** This includes the 'Little Safety Stars' package for early year's practitioners to deliver to ages 0-5, and 'Safety Stars' which engages with all primary school ages through creative and innovative 'club' based activities, animations and creative lesson plans to raise awareness of road safety issues during the transition period between primary and secondary school. It also supplies information for assemblies and lessons for high school pupils on a range of road safety topics applied through a number of school curriculum subjects. Mosque Marshalling resources are available in a number of languages, with links to assist school staff on general road safety and parking issues.
- **Sustainable/Active Travel Promotion:** Information and resources to encourage safe walking, cycling and scooting to school for pupils of all ages across Lancashire.
- **20mph Speed Limits:** A toolkit for teachers, lesson plans, posters and guidance on banner creation to raise awareness of 20mph speed limits, and encourage compliance within communities.
- **Bus Safety:** Assemblies and lessons focusing on safety whilst travelling on school and public transport, and the surrounding the bus network.
- **Parking:** Information and resources to assist school communities with the management of parking outside schools.



## **Primary School Delivery**

**School Engagement:** We will engage with schools in areas that have higher casualty records and are amongst the most vulnerable communities to deliver road safety education initiatives. We will engage with schools with the greatest potential for a modal shift from car to safe active travel.

**Right Start and Right Start Swift:** This comprises pedestrian training for children aged 4 – 7. We will support schools with resources and assist with training for teachers and school volunteers to help them deliver the programme to children. Right Start Swift is a condensed, easy to deliver version for schools unable to deliver Right Start.

**Bikeability:** We will manage funding procurement and co-ordinate delivery of Bikeability training to Year 6 pupils in Lancashire to enable young cyclists to use the road in a safe, competent and confident way. For 2015/16 we have secured £132,000 of Department for Transport (DfT) funding to provide training to 3,300 children across Lancashire, which will mainly be delivered by external providers through service level agreements. To support Bikeability training we will continue to provide Passport to Safer Cycling classroom workbooks which help children develop a greater understanding of road usage, traffic, a positive attitude towards other road user, and to ride with an improved degree of safety. In Preston Bikeability will be delivered to 700 pupils.

## **High School and College Delivery**

**School/College Engagement:** We will engage with schools in areas that have higher casualty records and are amongst the most vulnerable communities to deliver road safety education initiatives. We also engage with schools with the greatest potential for a modal shift from car to safe active travel.

**Bespoke Road Safety Engagement - Youth Stars:** This is an initiative to help young people develop bespoke projects/presentations/educational sessions addressing the road safety priorities in the district. It aims to develop relationships with partner agencies and promote road safety messages and strategies.

**Bus Safety Assemblies:** We will deliver safer travel assemblies to schools who have a large number of pupils travelling by school and public transport; and have reported a high incident number of unsafe or antisocial behaviour on school journeys. We aim to provide pupils with the skills to travel easily and safely, whilst also defining criminal and anti-social behaviour, and how it affects public transport and the wider community. The assemblies also highlight the consequences of becoming involved in either.

**Wasted Lives:** The Wasted Lives Young Driver Education Programme aims to challenge new and soon to be young drivers' attitudes to the risks associated with driving. It aims to improve their ability to assess risk, make the right decisions, and take responsibility for their own actions as a driver and as a passenger. It is a classroom based, peer led session aimed at 16-25 year old drivers and passengers.

## **Speed Management**

**Managing Speed:** Speeding vehicles are a major concern for communities in Lancashire, particularly in residential areas and outside schools. The management of speed is a high priority and is a key element of making the roads in Lancashire safer, and improving public confidence in their local area. Engagement in 20mph areas and the Lancashire Road Watch and Speed Tasking approach helps to ensure enforcement and engagement activities are focused in the areas of highest need. Both of these approaches are supported by the deployment of Speed Indicating Devices (SpIDs) to reinforce positive driver behaviour. As the budget for the deployment of SpIDs is reduced we will ensure that the SpIDs are deployed to have the greatest effect, and we will work through the Lancashire Partnership for Road Safety to establish a shared funding model.

**20mph area programme:** Lancashire County Council has introduced 20mph speed limits to residential areas, and outside all the schools in Lancashire, with the aim to reduce the number and severity of road accidents, and improve the quality of life for everyone by having streets where people can walk and cycle safely.

The sign only 20mph limit areas have been followed up by education and community engagement initiatives such as speed indicator devices (SpIDs), School Road Watches and Community Road Watches. These activities are being carried out to positively change driver behaviour and attitude and make Preston a safer place for all road users. The Community Road Watch is continuously being developed in conjunction with the police, so that members of the communities, supported by the police, can have a visible presence to monitor speeds within their own communities. We will continue to promote these initiatives through 2015/16.

**Lancashire RoadWatch and Speed Tasking:** The enforcement of speed limits through mobile and static cameras plays an important role in reducing speeds and casualties. Mobile enforcement through the Lancashire Partnership for Road Safety is being targeted at sites of high accidents and speeds, and at sites of community concern through the newly established Lancashire RoadWatch initiative. We have also set up a speed tasking group by which complaints regarding speeding are discussed with the police and appropriate actions agreed. There are a number of locations within Lancashire where the accident record has merited enforcement of the speed limit by fixed cameras. A full list and details of the fixed safety camera sites in Lancashire can be found at the 'safe2travel' website: [www.safe2travel.co.uk](http://www.safe2travel.co.uk)

**In Preston, Lancashire Road Watch is taking place on the following roads:**

- A6 – From the River Ribble to Barton
- A59 - River Ribble by Preston Docks to River Ribble by Tickled Trout
- A583 - From Grand Junction to boundary with Fylde at Savick Bridge
- B6243 - From Preston Prison to boundary with Ribble Valley east of Grimsargh
- B6241 - Tom Benson Way from Fylde Road round to Sir Tom Finney Way junction with Blackpool Road

## **Road safety improvement schemes and improvements to the highway infrastructure**

Analysis of casualty trends in each district and the identification of locations, areas or routes of concern allow us to identify schemes that can address specific road safety issues and reduce casualties through the implementation of local safety schemes. Road safety audits are also conducted on all new highway schemes and the implementation of a passive safety policy will help reduce the number and severity of casualties.

The following schemes are programmed as part of the Evidence Based Accident Reduction Measures that received funding in 2014/15 but will be delivered in 2015/16:

Scheme Name	Division	Description
A5085 Blackpool Road – Pedders Lane to Parker Street	Preston North Preston Central South	Markings, kerbs, signal junction alteration
Preston, Larches	Preston West and Preston North West	Introduce physical measures. Junction tables and speed cushions to be determined through consultation with elected members, police and community groups
Preston	Preston South East, Preston Central North, Preston Central South, Preston City and Preston North West	Inventory check of existing cyclist warning and information signs in the area and introduction of further signs as required
Preston	Preston North West and Preston Central South	Improve visibility signing and lining, carriageway guidelines and cycle warnings
Broughton	Preston Rural	Implementation of 20mph speed limit in main residential areas. Subject to consultation

## **Road Safety Schemes**

In 2015/16 a countywide allocation has been made available to address road safety issues. The programme of works is currently under development.

## **Motorbike and Scooters**

**Mike's Last Ride:** Mike's Last Ride is a film made in partnership with Lancashire Police with a road safety message for motorcyclists focussing on fatigue. It is shown at motorcycle meets and has been 'advertised' and shared via social media.

## **Cyclists**

A countywide allocation has been made available to specifically address cycling casualties.

**On-line Cycling Safety Advice:** We will further develop on-line cycling safety advice including seasonal messages on the Cycle Lancashire website - [www.cyclelancashire.com](http://www.cyclelancashire.com)

**Education and Resources:** We will further develop and promote cycling safety advice and resources, building safety messages into the cycling promotion activities of internal and external partners.

**Adult Cycle Training:** A limited number of free adult cycle training sessions will be available countywide.

**Children and Young People:** For primary school activity see Bikeability and Passport to Safer cycling above. During 2015/16 we will work with partners to identify opportunities to reach 16 to 25 year olds with cycling safety messages and education as this age group has been identified as particularly vulnerable to involvement in collisions while cycling.

**Targeted Promotion of Cycling Safety:** In this priority district for reducing cycling casualties we will work with partners to identify opportunities to develop local cycling safety initiatives and provide event support.

### **School Crossing Patrols**

The county council provides over 340 school crossing patrols throughout Lancashire. During 2015/16 the council will continue to provide all existing school crossing patrols, and this provision will continue to be fully funded by the county council.

The county council will continue to review options for the future funding of the School Crossing Patrol Service. A small number of schools had been in contact to say that they would be willing to offer part funding for wholly new crossing provision. This is being taken into account in the development of the revised proposals and our aim is to move the discussions forward quickly enough to enable this additional provision to be put in place for September 2015.

### **Older Road Users**

We will investigate factors contributing to collisions involving older road users across Lancashire, and work with partners to identify opportunities to develop countywide initiatives to reduce road casualties in this age group. As part of the budget proposal the overall number of Driving Safer for Longer course will be reduced. The courses are offered to all Lancashire residents, however the promotion will be focused on the areas with the highest older road user casualty statistics. Development of the other engagement activities will ensure advice and support is available to all older road users across Lancashire.

**Travel4Life Resources:** We will develop and improve older road user resources, and work with partner organisations to reach residents in this age group in greatest need of advice and assistance to enable them to maintain their mobility and independence whilst travelling safely.

**Travel4Life On-line Safety Advice:** We will develop road safety and travel advice for older road users – these are available at [www.safe2travel.co.uk](http://www.safe2travel.co.uk)

**Driving Safer for Longer Course:** This course is aimed at drivers over 65 and involves two driving sessions over three months. It provides guidance to older drivers to improve their driving skills and confidence.

## **Communities**

**Road Peace:** We will co-ordinate the delivery of this annual service held to remember road accident victims, and to mark the dedication and bravery of emergency crews, police and medical professionals who deal with the traumatic aftermath of road deaths and injuries every day.

**Healthy Streets:** We will continue to support communities to build on their existing assets, and help residents to identify and implement schemes and activities to encourage and enable safe walking and cycling, increase activity levels and improve local environments and community cohesion. The Healthy Streets budget will be reduced but the development of Community Champions to reduce the management costs, focusing on projects with greatest propensity to increase active travel and identifying joint funding projects will ensure optimum use of the budget.

### **Safer Travel Operations:**

Working with the Lancashire Constabulary, we will deliver targeted operations within the community to improve safety, and to reduce crime and anti-social behaviour on and around the public transport network.

## 4 ENVIRONMENT AND PUBLIC PROTECTION SERVICES

### 4.1 Environmental and Community Projects

The Environment and Community Projects team works with local communities and provides a range of services that deliver urban and rural regeneration, health and well-being, economic, energy and biodiversity related outcomes for the benefit of all Lancashire residents.

As the county council's transformation progresses and the team re-shapes, the opportunity will be taken to carry out a wholesale review of the current work programme. All project activity will be considered against the county council priorities. Where projects demonstrate a clear link to priorities, these will form the basis of the 2015/16 work programme.

As resources become tighter (reduction in both staff and budgets) and community expectations continue, a change in our approach to supporting community groups will be implemented. A basic principle will be that all residents making contact with the team can expect some level of service and support. For communities who are deemed more able, this may mean a site meeting to advise and signpost.

However, those organisations or projects that come from the Lancashire's more deprived areas can expect to receive greater levels of support to bring their project ideas forward. As well as environmental activity, the team will seek to engage with communities on projects that promote social capital by developing citizenship, neighbourliness, social networks and civic participation.

Building social capital is not a new concept for the team. We will be extending the community side of our activity to engage in a greater diversity of projects. This might include; supporting community asset transfer, the development of new community groups, and helping residents' access LCC services.

Activities such as these can identify, and overtime begin to address issues that affect residents and help to build social capital, resulting in better health, education and employment outcomes for communities and reductions in crime and anti-social behaviour. We will continue to optimise all opportunities to draw external grants and the team has a strong track record in attracting funds for physical environmental improvement projects. Assisting projects that may require revenue support offers further opportunities to attract funds from external grant sources such as Trusts and Big Lottery programmes. Many of these funders target geographical and social groups that align with the most deprived communities in Lancashire, as well as outcomes that align with county council priorities.

All projects, regardless of origin or location will be subject to a renewed process where an enquiry is considered on the basis of whether it can be considered a community scheme, that is feasible and in line with stated county council priorities.

The team will focus its resources on supporting communities in Lancashire's most deprived communities, as well as supporting strategic environmental projects and the delivery of projects in the Forest of Bowland AONB.

We will continue to use our staff and revenue budgets to maximise investment from other funding agencies. Central government funding, national lottery, landfill tax, Forestry Commission, trusts and foundations will be used to support the broad base of activity delivered from within the team.

## Key Performance Indicators

As part of the renewed process Key Performance Indicators (KPI's) have been developed and include:

- Percentage of projects located in Priority Neighbourhoods
- Added value (there would be an expectation of at least doubling the leverage of the LCC pound)
- Customer feedback and customer satisfaction (data collected on project completion)
- Change in groups perception (data gathered at beginning and end of the project)

## 2015/16 Projects

The projects listed below reflect the priority projects that will be developed and delivered during 2015/16:

Main Work Programme for 2015/16 Projects in Development and Delivery		
Project/activity name and division	Description	Desirable outcomes
<b>Preston Guild Wheel</b> <b>Divisions:</b> <b>Preston North West, Preston West, Preston North, Preston Rural, Preston North East, Preston East, Preston South East, Preston City</b>	Launch user behaviour/safety campaign.	Campaign events and publicity throughout the year.
<b>Safety Schemes</b> <b>Divisions: Preston North East and Preston City</b>	Safety Schemes at Midgery Lane and Riverside. Further safety schemes as appropriate, most in partnership with Preston City Council.	Design, consultation and implementation of safety schemes.
<b>Forest of Bowland AONB, Tramper Projects</b> <b>Division: Preston Rural</b>	Support the evolution of the 'Wyresdale Wheels' and 'Bowland Experience Tramper for Hire' schemes.	Improved opportunities for less able people and those with health issues to explore/engage with their environment and an improved sustainable offer for the tourism sector.
<b>Traditional Boundaries-rural skills-Forest of Bowland AONB and North Lancashire</b> <b>Divisions: Working across all divisions within the AONB where</b>	Continue to organise and deliver rural skills training in particular hedge laying and dry stone walling for local community volunteers, contractors and farmers.	Rejuvenation of traditional rural skills within the local community: volunteers, contractors and farmers. Improved maintenance and enhancement of these key landscape and biodiversity features.

<b>Main Work Programme for 2015/16 Projects in Development and Delivery</b>		
<b>Project/activity name and division</b>	<b>Description</b>	<b>Desirable outcomes</b>
<b>opportunities present themselves or are created by project staff</b>		
<b>Cosy Homes in Lancashire (CHIL) Divisions: Countywide as necessary</b>	Working with district councils through the Lancashire Home Energy Officers Group to identify opportunities and an approach to securing ECO funding for Lancashire residents.	Securing ECO funding for Lancashire residents to improve energy efficiency of homes, reduce bills and reduce fuel poverty.
<b>Affordable Warmth Divisions: Countywide as necessary</b>	Developing a sustainable winter warmth programme that provides interventions for vulnerable residents living in cold homes over winter.	Improved thermal comfort of homes with the ultimate aim of reducing hospital admissions and excess deaths during winter.
<b>Lancashire Peat Project Divisions: Countywide as necessary</b>	Support the Lancashire Peat Partnership with the delivery of bare peat restoration, grip and gully blocking, monitoring and associated access improvement works. Funding support potential through EU LIFE+ and new Countryside Stewardship.	Habitat improvements with associated public access improvements. Associated reduction in carbon loss. Improvements to the water holding capacity of these habitats with associated benefits to the wider environment.

## 4.2 Waste Recovery and Disposal

Lancashire County Council and the district councils jointly provide the waste management service in each district. Lancashire County Council is the Waste Disposal Authority and arranges for the processing of waste collected by the districts as the Waste Collection Authority.

There are number of factors which present a significant risk to the county council's waste management budget.

In August 2014 the county council terminated its Waste PFI contract and took ownership of the main strategic waste processing facilities in Farington and Thornton; along with the company that had been operating them under the PFI contract. Whilst an overall reduction in expenditure was achieved, as a result of the contract termination the new arrangements present significant challenges and a greater financial risk profile for the council against its revised waste budget, as a result of having responsibility for all aspects of plant operations and maintenance.

In addition the waste budget faces other external pressures such as the potential for growth in waste arisings, possible increases in inflation and, at present, the significantly reduced value of recyclable materials brought about by the reduction in oil prices.

The waste management group will be working to mitigate these additional financial risks during 2015-16, and will need to continuously review the services it delivers throughout the year, in order to be able to respond to these pressures as they develop.



**Household Waste Recycling Centres** – Preston HWRC is on Tom Benson Way, Ingol. A limit on how much inert waste people can dispose of for free at our household waste recycling centres will be introduced in 2015/16.

**Landfill** - Whilst it is our intention to divert as much waste from landfill as possible some landfill will always be necessary for process residues that cannot be utilised or other waste types which cannot be recycled or re-used (for example asbestos, bulky wastes, road sweepings etc). Sufficient landfill capacity will be provided and managed through our contracted landfill facilities in Fleetwood and Altham in order to ensure that these waste types can continue to be dealt with efficiently.

**Waste Recovery Parks (WRP)** - Approximately 36,300 tonnes of residual (grey bin) waste and 7,900 tonnes of doorstep collected recyclables from Preston are taken (via Preston Transfer Station) to Lancashire County Council's WRPs.

**Green Waste** - Approximately 7,900 tonnes of green waste from Preston is currently taken (via Preston Transfer Station) to Lancashire County Council's WRPs.

**Lancashire Waste Partnership** - Lancashire County Council will continue to facilitate the management of the Lancashire Waste Partnership and delivery of the Municipal Waste Management Strategy for Lancashire.

The cost sharing agreement which exists between Lancashire County Council and Preston City Council was extended in 2014 and provides annual support to Preston waste collection services. Lancashire County Council works in partnership with Preston City Council to continuously review, and where possible improve, recycling collections at doorstep.

**Waste Education and Information** - We encourage people to recycle and re-use waste in a number of ways including organising campaigns, giving away free compost, and running the Lancashire Waste Helpline (0300 123 6781) telephone service to answer any questions people have about waste.

Lancashire schools can take part in our Environmental Education Service which provides two outreach visits to the school and the opportunity for the school to visit the Farington Environmental Education Centre for a walkway tour around the waste plant. The Service has an annual target to engage 300 Key Stage 2 classes in the Service. Our household battery recycling scheme is also another option for Lancashire schools to get involved with recycling, with prizes given out to schools collecting the most batteries per pupil in each district.

## 4.3 Planning and Development Support

The planning and development support teams:

- Determine planning applications for minerals and waste developments and the county council's own development proposals, and attends public inquiries in relation to such.
- Provide specialist advice on archaeological and ecological matters in response to consultations on planning applications determined by the county council, and provide advice on archaeological matters in response to consultations on planning applications by the district councils as part of a service level agreement.
- Administer agreements with developers under Section 278 of the Highways Act 1980.
- Administer Section 106 of the Town and Country Planning Act 1990 agreements, which allow a local planning authority to enter into a legally-binding agreement or planning obligation with a landowner.

- Monitor the introduction of the district councils' community infrastructure levy system feeding into that process as and when required (the current position is shown in section 2.6).
- Administer Section 38 schemes agreements with developers under the Highways Act 1980 between the developer and the county council to ensure that work carried out on the highway by the developer reaches adoptable standards.
- Develop strategic policy including the minerals and waste planning policy, and the preparation of the Local Transport Plan.
- In our role as local highway authority we respond to consultations on planning applications submitted by a local planning authority. Our service will ensure that the highway network (existing/modified) can accommodate appropriate development safely as efficiently as possible thereby maximising the level of economic development and regeneration. In addition, if development is not supported by the local highway authority we will provide highway expert witnesses and evidence at planning appeals.

## 4.4 Countryside Services

Lancashire County Council maintains 93 recreation and forestry sites across the county. In Preston, Beacon Fell Country Park is the counties flagship site attracting over 250,000 visitors a year

Residents of Preston also benefit from convenient access to the Preston Junction Local Nature Reserve. This former railway line provides an attractive environment for walking, cycling and horse riding between Preston and Bamber Bridge.

The following countryside access resources are owned and managed by Lancashire County Council in Preston. These complement the parks and green spaces provided and managed by Preston City Council.

Location	Description
Beacon Fell, Bowland	110 hectares of woodland and open moor land, Beacon Fell is the busiest Country Park in Lancashire attracting around 250,000 visitors each year. There is a visitor centre, café, trails, sculptures and trampers providing a range of opportunities for informal countryside recreation. Friends of Beacon Fell involved in fund raising and events.
Access Land, Riversway	There is 46 hectares of access land at Preston Dock. The site is occupied by the Trax go-karting and motorcycling tracks but public access is available to the riverside path and an area next to Savick Brook.
Ribble Way, Various	The Ribble Way starts at Longton on its journey to the source of the Ribble near Ribblehead. 14km of the route pass through Preston following the river through Miller and Avenham park, the new Lancashire Wildlife Trust nature park at Brockholes and on to Grimsargh. Much of the route in Preston is also available to cyclists.

Coastal Way	<p>Maintenance of existing infrastructure.</p> <p>Work has started on the England Coast Path - a new National Trail around England's coast. The Government have recently announced a new timescale for the completion of the Coast Path – by 2020. Work on Coastal Access is likely to start in Lancashire in 2015/16 led by Natural England</p> <p>The Lancashire Coastal Way will form the backbone of the trail – but there are a number of locations in Lancashire where the new rights can bring significant improvements to coastal access.</p> <p>As a Public Right of Way the highway authority will be responsible for its maintenance. The route will be part of the National Trail Family and maintenance will be grant aided by Natural England.</p>
-------------	--

## Public rights of way

Lancashire County Council protects and maintains 5544km of the Public Rights of Way (PROW) network across Lancashire and continually updates the 'Definitive Map and Statement' as the official legal record of public rights of way, which are statutory responsibilities. The county council also responds to reports of defects and queries made about the PROW network.

### PROW in Preston:

Preston Public Rights of Way	
Public footpath length	248km
Public bridleway length	21km
<b>PROW total length</b>	<b>269km</b>

### 4.4.1 Areas of outstanding natural beauty in Lancashire

Areas of Outstanding Natural Beauty (AONBs) have been confirmed by the government as having the highest status of protection in relation to landscape and scenic beauty. The statutory purpose of an AONB is to conserve and enhance the natural beauty of the landscape.

The Countryside and Rights of Way Act 2000 (CROW) places a duty on local authorities to act jointly to produce a management plan for the AONBs within their administrative boundaries. By agreement with the local authorities this duty is being performed in Lancashire by the two AONB management partnerships – Forest of Bowland Joint Advisory Committee and the Arnside and Silverdale AONB Executive Committee.

The Forest of Bowland AONB Management Plan 2014 - 2019 was adopted by Lancashire County Council in March 2014, and the Arnside and Silverdale AONB Management Plan 2014 - 2019 was also adopted in March 2014.

Each AONB partnership is hosted by one of the relevant local authorities. The county council is the lead and host authority for Forest of Bowland AONB.

The AONB unit is employed by the county council on behalf of the AONB partnership and is responsible for the review, preparation and implementation of the AONB management plan. Plan implementation includes landscape and biodiversity conservation and enhancement through jointly funded AONB projects programme; support for sustainable tourism businesses and community groups, and the delivery of projects through the AONB Sustainable Development Fund (SDF). The

AONB unit has 3-year rolling business plans agreed annually by the AONB partnership to guide day-to-day work.

Planned partnership activity from AONB unit business plans for 2015/16 include:

1. 'Networks for Nectar' project to support creation of hay meadows on small sites within Forest of Bowland.
2. Continued work with Lancashire Peat Partnership and Environment Agency to restore upland peat on Bowland Fells to provide multiple public benefits, including potential to reduce downstream flood risk. Currently awaiting decision on EU LIFE+ funding to support c.£1.5 million investment in peatland restoration in the AONB
3. Improved woodland management and development of local woodfuel initiatives within the AONB.
4. Support for Bowland Land Managers Forum and Bowland Experience Ltd to bring forward potential collaborative projects to be supported EAFRD and LEADER Rural Development funding programmes within the AONB from March 2015 onwards
5. Development of fundraising activities to support the AONB by both Champion Bowland and Bowland Experience Ltd
6. Continued support for AONB tourism businesses to develop new sustainable tourism attractions, activities, visitor information and promotions (e.g. Discovery Guide, Festival Bowland events programme, Electric bike network, 'Dark Skies')
7. Support for local communities to conserve and enhance the landscape, through the Sustainable Development Fund, Parish Lengthsman Schemes and Traditional Boundaries Programme.
8. Legacy activity following the 50<sup>th</sup> Anniversary of the designation of the Forest of Bowland AONB in 2014, including second year of 'Bowland Revealed' arts project and Museum of Lancashire exhibition
9. Bowland Outreach Project to help develop a stronger connection with the AONB for neighbouring disadvantaged urban communities (subject to Big Lottery 'Our Environment, Our Future' funding being secured)

Further details will be available as the AONB unit business plans are finalised in April 2015.

<b>AONB in Preston</b>	
Forest of Bowland area	1,348 hectares

## 4.5 Trading Standards and Scientific Services

The trading standards service aims to promote an equal, healthy and safe trading environment in Lancashire by protecting local consumers; supporting honest businesses; tackling dishonest practices and making sure communities are safe.

The trading standards service offer includes:

- Consumer support
- Animal health and agriculture related inspections
- Sampling and handling complaints
- Product safety test purchasing and dealing with complaints
- Administering poisons licensing regime
- Risk based visits to petroleum and explosive premises and sites
- Food safety
- Metrology
- Fair trading and door step crime
- Intelligence management
- Tasking and coordination with regional and national enforcement systems
- Underage sales enforcement
- Legal process
- Support to businesses
- Pursuing commercial opportunities to generate income
- Delivery of safe trader projects
- Issues related to alcohol and tobacco related regulatory interventions

Lancashire County Scientific Services (LCSS) provides a wide range of UKAS accredited environmental, food substance and agricultural testing services for the council, and on behalf of the council as an income generating service.

The intention is to consolidate the delivery of activities and operate as one analytical service. A cohesive approach to Trading Standards and Scientific Services under one Head of Service will lead to efficiencies and benefit both of the services. Delivery will be targeted to the priority neighbourhoods and areas of deprivation as appropriate. Activities will be prioritised towards vulnerable consumers and priority neighbourhoods where this is appropriate.

### Trading Standards

The following tables provide some examples of anticipated demands and activity levels in Preston based on actual activity recorded during 2014/15:

#### Trading Standards

Demand/activity	Anticipated work	Aim/outcome
Provision of advice to members of the public.	Approximately 1585 complaints.	Supporting, empowering and protecting Preston residents. Informed and compliant Preston businesses A fairer trading environment leading to economic wellbeing For every pound spent on Trading Standards services, it is estimated that consumers gain a benefit of around £10.

Provision of advice and visits to businesses.	Approximately 3025 visits and advice.	Supporting local businesses and protecting consumers.
Media Releases and Early Warnings	12 media releases across the County in relation to current consumer and business scams and poor practice. Use of Scambuster Stan facebook page to distribute information about product recalls, scams and warnings and linking in with the Police "in the know" network to increase "reach".	Informed and empowered consumers and businesses. Legitimate businesses safeguarded and protected. Disruption of rogue trading.
Dealing with referrals from National Scams Hub relating to potentially vulnerable scam victims	Initial contact/advice visit to victims followed by appropriate enforcement and support work, including liaison and referral to partner agencies (approx. 10 visits per district). Regular publicity and awareness raising regarding scams. Presentations and training to Police, Adult Social Care Staff and others.	(1) Identification of current victims to ensure problems are addressed and relevant support is sourced from appropriate agencies. (2) Intel exchange and raised awareness of scam issues with partners so that intervention is possible at an early stage reducing the number of long term, chronic scam victims.
Testing weighing and measuring equipment used for trade purposes.	Petrol pumps, weighing machines in shops, beer and spirit measures, weighbridges, fuel tankers and other equipment inspected/tested on basis of risk/identified problems.	Protecting consumers and honest businesses. Creating a fair trading environment and contributing to a strong local economy.
Businesses signed up to safe trader scheme.	120 businesses already signed up to the scheme retained, and additional members signed up.	Protecting consumers and honest businesses. Creating a fair trading environment and contributing to a strong local economy.
Tackling doorstep crime by the establishment of 'No Cold Calling Zones' and dealing with complaints from residents. Provide a rapid response where rogue traders are present on Consumers premises. Deliver proactive doorstep crime awareness training to consumers and partners including the police.	28 zones maintained and seek to establish a number of further zones according to local support and risk 21 doorstep crime complaints dealt with. Awareness training to partners proactively offered and delivered on request.	Protecting consumers (especially the most vulnerable). Supporting honest businesses. Disruption and displacement of rogue traders Reduction in crime Increased reporting and awareness of doorstep crime Safeguarding victims and potential victims and preventing re targeting Improved partnership response to doorstep crime incidents Prevention of the life savings of elderly vulnerable consumers being targeted and acquired by the criminal community.

		Improve the capacity of older people to continue living in the community and feel supported.
Appropriate legal action taken against the worst offending traders.	Where serious legal breaches are identified – offenders prosecuted. Includes prosecutions for serious consumer frauds, and contraventions of legislation designed to protect and maintain public health standards. 55 prosecutions anticipated countywide.	Creating a fair trading environment and contributing to a strong local economy. Protecting public health and wellbeing Disrupting activities of rogue traders in Lancashire
Tobacco and Nicotine containing products: To deliver a holistic response to underage sales issues, Service takes a multi-agency approach to prevention and intervention opportunities.	<p>Intelligence led underage sales operations determined by complaints, intelligence received and identified problem areas.</p> <p>Consultation with young people aged 14-17 via online alcohol and tobacco survey.</p> <p>Development of an E-learning platform which will provide easy access to a wide range of alcohol and tobacco information, training and support.</p> <p>Promote registration and usage of Lookout Alcohol and Tobacco websites to all primary schools across the district.</p> <p>Promote Lancashire as a 'Check 25 County' to prevent sales of tobacco and nicotine containing products to under 18's by developing and implementing a communications plan Offer training and free due diligence resources for businesses to assist them in preventing sales of tobacco and nicotine containing products to under-18's Develop and deliver a countywide communications plan for parents, adults and peers to raise awareness of the health impacts, potential fines/legal issues and where</p>	<p>Tackling anti-social behaviour. Protecting the health of young people.</p> <p>Good quality data to enable resources to be targeted effectively and to inform performance management and monitoring.</p> <p>Local needs analysis enabling identification of 'hotspots'. A regular collection of contemporaneous data on young people's attitudes to, and use of, alcohol and tobacco.</p> <p>Improving the health choices of young people in schools and colleges.</p> <p>Supporting teachers, tutors and other agencies who work with young people. To reduce the supply of tobacco and nicotine containing products to under 18's through;</p> <ul style="list-style-type: none"> <li>- Underage sales</li> <li>- Parental supply</li> <li>- Peer supply</li> </ul> <p>To develop, produce and distribute awareness raising resources to the target audiences, young people, retailers, parents and professionals working with young people.</p> <p>To encourage resilience to risk taking behaviours and improve children and young people's health and wellbeing through healthy lifestyle choices.</p>

	<p>to get advice and support Engage Young People through schools and other settings by promoting existing and developing new tobacco and nicotine containing products educational resources</p> <p>Increase the amount of intelligence provided to Trading Standards in relation to the sale and supply of tobacco and nicotine containing products in Lancashire to under 18's.</p>	
<p>Lancashire Community Alcohol Network: To deliver a holistic response to underage sales issues, the Alcohol and Tobacco team takes a multi-agency approach to prevention and intervention opportunities.</p>	<p>Promote Lancashire as a 'Check 25 County' to prevent sales of alcohol to under 18's by developing training and free due diligence resources for licensees to assist them in preventing sales of alcohol to under-18's</p> <p>Engage Young People through schools and other settings.</p> <p>Collect and analyse data for Lancashire's bi-annual Young Peoples Alcohol and Tobacco Survey and disseminate reports to inform strategy and plans</p> <p>Develop a partnership with Lancashire Constabulary to conduct intelligence led, targeted activity, to identify young people (U18) who are, or may become vulnerable through alcohol or substance misuse (illegal substances and legal highs).</p> <p>Introduce a consistent approach for the offence of selling alcohol to persons under 18 which seeks to educate rather than criminalise where appropriate.</p>	<p>To reduce the supply of alcohol to under 18's through;</p> <ul style="list-style-type: none"> <li>- Underage sales</li> <li>- Parental supply</li> <li>- Peer supply</li> </ul> <p>To develop, produce and distribute awareness raising resources to the target audiences, young people, retailers, parents and professionals working with young people.</p> <p>To encourage resilience to risk taking behaviours and improve children and young people's health and wellbeing through healthy lifestyle choices.</p>



**Animal health and agriculture**

<b>Demand/activity</b>	<b>Anticipated work</b>	<b>Aim/outcome</b>
Provide advice and support to farms and businesses in Preston.	Approximately 45 requests for advice on legislation or requests for movement documents.	Support local businesses and protect the wider farming community and public health.
Monitor food standards at primary producer level on farm.	Approximately 20 risk based visits will be carried out for animal health and welfare, feed and food standards.	Promote high standards of animal health and welfare on farm and ensure the safe production of food at the first point in the food chain.
Investigate complaints relating to the health and welfare of farmed animals and contraventions of disease controls.	Approximately 70 complaints expected based on previous years. Approximately 15 complaints will require an officer visit.	Protecting businesses which may be affected by disease outbreaks and the community from health risks.
Assess animal health and welfare standards at abattoirs, both at the premises and livestock received. Carried out in liaison with the Meat Hygiene Service.	1 primary visit to the premises, 12 Official Veterinarian Referral visits plus responding to any referrals from the Meat Hygiene Service.	Supporting businesses, maintaining standards to protect animal health and welfare and ensuring a fair trading environment.
Register and advise new feed businesses.	1 food business which supplies co-products to the animal feed industry to be registered and advised. 16 Feed on Farm Visits.	Support local enterprise and economy with legal and technical guidance and ensuring products supplied to animal feed are safe for animals.
Appropriate legal action taken against the worst offending traders.	Where serious legal breaches are identified – offenders prosecuted.	Maintaining standards and ensuring a fair trading environment.

**Food safety**

<b>Demand/activity</b>	<b>Anticipated work</b>	<b>Aim/outcome</b>
Provide advice and guidance to individuals and Preston businesses	Approximately 200 consumer complaints resolved and business enquiries satisfied.	Support local businesses and protect and improve the health of Preston residents
Monitor food standards and composition at all stages of food production.	Approximately 190 samples taken and analysed. Support offered to Preston companies where adverse results found.	Maintain fair, healthy and legal products from raw material to finished article.
Offer guidance to and register new food businesses.	Approximately 70 new food businesses projected in 2015/16.	Support local enterprise and economy with legal and technical guidance.
Assess food standards, compliance at major food businesses in Preston.	Approximately 18 high priority inspections to be carried out.	Supporting businesses, maintaining standards and ensuring a fair trading environment.

Appropriate legal action taken against the worst offending traders.	Where serious legal breaches are identified prosecution cases considered.	Maintaining standards and ensuring a fair trading environment.
Businesses signed up to Recipe for Health Award.	7 businesses on the scheme, new members assessed throughout the year.	Formal recognition of Healthy businesses.

### **Petroleum and explosives**

<b>Demand/activity</b>	<b>Anticipated work</b>	<b>Aim/outcome</b>
Inspections of petroleum and explosives storage premises and the licensing and provision of advice to businesses	Risk based/intelligence led visits. Currently 64 licensed/registered petroleum and explosives premises in Preston.	Protecting the health and safety of Preston residents and businesses. Environmental protection in relation to petroleum storage. Supporting local businesses.
24/7 emergency response to reported/suspected petroleum leaks	Respond to any report of suspected petroleum loss.	Minimising the impact on the health and safety of the residents and businesses of Preston and damage to the environment and drinking water supply.
Appropriate legal action taken against the worst offending traders	Where serious legal breaches are identified – offenders prosecuted.	Maintaining standards and ensuring a safe trading environment.

### **Scientific Services and Technical Support for Emergencies**

Lancashire County Scientific Services is a regional centre of excellence for food, water, waste and environmental scientific analysis. As one of a handful of accredited Public and Agricultural Analyst laboratories nationally, we safeguard the health and wellbeing of Lancashire's residents, support economic growth and protect our environment on behalf of Lancashire County Council and private clients.

We offer a full consultancy and scientific advice service for a diverse range of analysis and monitoring. This includes:

- Food and agricultural product testing
- Microbiology
- Asbestos
- Air quality analysis and noise monitoring
- Local exhaust ventilation testing
- Consumer product testing
- Face fit testing
- Waste analysis
- Water analysis

We also manage and monitor 23 closed landfill sites across Lancashire. These landfill sites no longer accept waste but can still present a risk to the surrounding environment. The decomposition of waste within landfill produces potentially explosive gas which can present a flammability and asphyxiation risk and leachate (contaminated water) which has the potential to pollute local surface and ground waters.

## 4.6 Emergency Planning

The role of the Emergency Planning Service is to prepare for, and if necessary, respond to major emergencies that may affect the people or environment of Lancashire. The Emergency Planning Service is a strategic function that is delivered across the whole of Lancashire. Therefore there are no separate revenue costs for each district

Whilst there is no formal agreement with Preston City Council, members of Lancashire County Council Emergency Planning Service maintain close regular liaison with the appropriate Preston City Council staff to ensure that an efficient, co-ordinated response can be made to emergencies (major incidents). In the event of an emergency occurring in the district of Preston, the county council Emergency Planning Service (which maintains 24/7 on call arrangements) will be notified by the emergency services. Lancashire County Council Emergency Planning Service will liaise with Preston City Council staff to activate the appropriate response and provide support e.g. activation of voluntary agencies for rest centres.

Emergency plans are based on the Community Risk Register and a common feature involves the need to provide support to people in the event of an emergency. This involves Lancashire County Council liaising with Preston City Council to identify suitable premises that can be used if people are evacuated from their home (e.g. due to flooding). The work between the county council Emergency Planning Service and Preston City Council staff also involves co-operation on training and exercises.

Lancashire County Council also has a duty to prepare emergency plans under the Pipeline Safety Regulations for certain pipelines that criss-cross the county. The plans for pipelines within the district are developed with partner organisations including the district council.

Under the Reservoirs Act/Flood and Water Management Act Lancashire County Council are required to prepare plans to deal with the offsite consequences e.g flooding that could arise from a dam breach; as with other plans these are developed with partner organisations including the relevant district council.

In addition Lancashire County Council has a statutory duty (under REPPPIR and COMAH regulations) to prepare a specific plan to deal with the off-site consequences of an emergency at Springfields Fuels Ltd (located in Fylde). Due to the proximity of the site to Preston's boundary, liaison is maintained between Lancashire County Council and Preston City Council as part of the off-site plan preparation.

From 1 April 2015 Emergency Planning becomes part of the new Emergency Planning and Resilience Service which integrates Emergency Planning, Health and Safety, Health Protection and Employee Support within the wider Public Health functions delivered by Lancashire County Council. This new service links related activities to give a more coordinated approach to employee and public protection issues encountered in the common areas of these activities.

## Appendix A




In Preston, 34 individual issues have been identified under the following themes – Economy, Deprivation, Health, Population, Education, Community Safety, Transport, and Road Safety. From this evidence, it would seem the most pressing issues for Preston are the levels of deprivation in some parts of the district, economic development and education. There is a significant inequality in health and life outcomes both within Preston and between other districts in the county.




A lack of accessible employment coupled with a lower level of workforce skills makes material deprivation a significant problem. The proportion of NEETs (a young person not in education, employment or training) in Preston is also above the county average. The misuse of alcohol not only imposes a burden on the health services, but impacts heavily on crime, road safety and perceptions of community safety, particularly in the town centre.

The tables below set out the issues identified in the Needs Profile and the activities the Environment Directorate intend to deliver in 2015/16 to positively influence these issues.

Although the majority of these issues can be directly influenced by the Environment Directorate, where this is not the case the Environment Directorate will be a partner in a much wider service delivery solution alongside other directorates and agencies. It should be noted that the Needs Profile is one aspect of the service planning process and has been used in conjunction with other drivers to shape service delivery.

The information given in the tables has been rated on a 'traffic light' system, indicating the extent to which the issue provides a challenge to our service.

	<b>Major challenge</b>	The Issue has a significant immediate and/or ongoing impact and requires immediate and/or ongoing action.
	<b>Pressing issue</b>	Issue impacts on the district and may require service delivery adjustments. Monitoring of the issue and action may be required to prevent it becoming a 'red' challenge.
	<b>Minor issue</b>	Issue is of minor/no concern, or is in the process of being addressed. Monitoring of the issue, further observation and analysis will prevent it becoming an 'amber' challenge.

<b>Economic</b>	
Issues	<ul style="list-style-type: none"> <li> Supporting major strategic development opportunities including Cuerden Green (nearby in South Ribble), the Central Business District and retail/public realm development</li> <li> The need for appropriate employment opportunities in the district, particularly in connecting new employment opportunities to deprived communities and in the development of local entrepreneurship</li> <li> Ensuring connections to the Enterprise Zone at Warton and Samlesbury.</li> </ul>
Summary	Preston is the key city in Lancashire, offering employment opportunities for the surrounding areas and beyond. Increasing these opportunities through providing the transport links need to allow people to access these areas and attracting investors is crucial.
Environment directorate delivery actions	<ol style="list-style-type: none"> <li>1. Maintain the highway, focusing particular attention on the network that supports areas of economic development from both within the county boundary, and where appropriate, linking to areas outside the county boundary.</li> <li>2. Provide access through public transport to areas of economic development.</li> </ol>

	<ol style="list-style-type: none"> <li>3. Provide highways developer support to help deliver the city centre redevelopment and other economic development opportunities.</li> <li>4. The Central Lancashire Masterplan represents the county council's priorities for future investment in highways and transport by setting out the proposed improvements that will benefit everyone who travels in Central Lancashire and for the communities and businesses that are its heart. Working towards these ambitions will see new road space built, public transport prioritised along key corridors into Preston and between Leyland and Chorley, and public realm improvements in city, town and local centres. This work is integral to the City Deal project.</li> </ol>
--	--

<b>Deprivation</b> (see below for the index of multiple deprivation map)	
Issues	<ul style="list-style-type: none"> <li>■ The levels of significant deprivation in some areas</li> <li>■ The number of children living in poverty</li> <li>■ Economic regeneration of deprived areas</li> <li>■ Transport accessibility in deprived communities</li> <li>■ Excess winter deaths and fuel poverty in vulnerable groups</li> </ul>
Summary	Almost 40% of the population of Preston live in the most deprived areas, 20% of the population are considered to be income deprived and 6,100 children live in poverty, which is significantly worse than the England average.
Environment Directorate delivery actions	<ol style="list-style-type: none"> <li>1. Increase opportunities to access work, through improving road conditions and congestion, the provision of effective public transport and supporting sustainable travel options.</li> <li>2. Provide information and signposting to appropriate sources, which will help vulnerable Preston residents to keep warm in winter.</li> <li>3. Support community groups to enhance and improve their local areas.</li> </ol>

<b>Health</b>	
Issues	<ul style="list-style-type: none"> <li>■ Reduced life expectancy for males and females</li> <li>■ High rates of hospital admission for alcohol-specific conditions for under 18's</li> <li>■ High percentage of adults binge drinking</li> <li>■ High rates of hospital stays for alcohol-related harm</li> <li>■ Worse rates of early deaths from heart disease and strokes</li> <li>■ High rate of people (17+) diagnosed with diabetes</li> <li>■ Average numbers of physically active adults and children</li> <li>■ Low numbers of adults eating healthily</li> <li>■ Increasing numbers of obese/overweight children (year six)</li> </ul>
Summary	The health of people in Preston is generally worse than the England average. Life expectancy from birth in Preston is 76 years for men (England 78.6 years), and 80 years for women (England 82.6 years). Early death rate from heart disease and strokes has risen over the past year, and is significantly worse than the England average. The number of people with both diagnosed and undiagnosed diabetes is also an issue. The rates of hospital stays for alcohol-specific conditions in adults are all significantly higher than the England average. There is also an increase in year six children being classified as obese in Preston.

Environment Directorate delivery actions	<ol style="list-style-type: none"> <li>1. Provide information about healthy living, including promoting access to open spaces and good quality, affordable food.</li> <li>2. Support community groups to enhance and improve their local areas.</li> <li>3. Promote behavioural change activities and awareness rising in terms of the misuse of alcohol and tobacco.</li> <li>4. Provide easy access to health care establishments and to areas of open spaces, through maintaining the road conditions, reducing congestion, and offering advice and support on sustainable travel methods.</li> <li>5. Provide/support sustainable travel options in particular in deprived areas.</li> <li>6. Help increase personal and community resilience by responding quickly and flexibly to local concerns.</li> <li>7. Promotion and delivery of active travel options e.g. walking and cycling.</li> </ol>
--	--

Population	
Issues	<ul style="list-style-type: none"> <li>■ An increasing proportion of residents aged 65+ years</li> <li>■ An increasing proportion of children between 5 – 14 years</li> </ul>
Summary	<p>The population continues to rise in Preston, with an increase of 10,600 people (8.2%) since the 2001 census. These changes to the population will present additional challenges to service provision, particularly with regards to road safety; travel and transport; employment, education and training; public realm; protective services (trading standards, safer neighbourhoods), and access to other services.</p>
Environment Directorate delivery action	<ol style="list-style-type: none"> <li>1. Consider services in terms of their accessibility for the ageing and young populations.</li> <li>2. Increase population will result in increases use of services.</li> <li>3. Deliver the Driving Safely for Longer course, aimed at drivers over 65 and involves two driving sessions over three months, and provides guidance to older drivers to improve their driving skills and confidence.</li> <li>4. Provide options to enable the aging population to maintain their independence, through the provision of buses and trains as a subsidised or free service through the NowCard scheme, or enable access to an appropriate community transport network, that can address an individual's transport need.</li> </ol>

Education	
Issues	<ul style="list-style-type: none"> <li>■ To reduce the number of people without the minimum skills of NVQ2 expected by employers</li> <li>■ To increase the number of people with higher qualifications (NVQ4 and above), particularly in the most deprived areas</li> <li>■ To reduce the number of young people classified as NEET (16-18 not in education, employment or training).</li> <li>■ To maintain or increase the number of young people achieving 5 GCSEs (A*-C) including English and maths</li> </ul>
Summary	<p>Levels of educational achievement in Preston are improving. In 2011/12, 63.8% of pupils gained at least 5 GCSE grade A*-C (including maths and English) passes or equivalent. The working age population (16-64) qualified to NVQ4 or above. The statistics for education take into account Preston's University City Status which is concealing issues at more local levels. Experience from other areas suggests that educational attainment will be markedly lower in the most deprived areas.</p>

Environment Directorate delivery action	Provide easier access to employment and education, through improving road conditions and congestion, the provision of effective public transport, and supporting sustainable travel options.
---	--

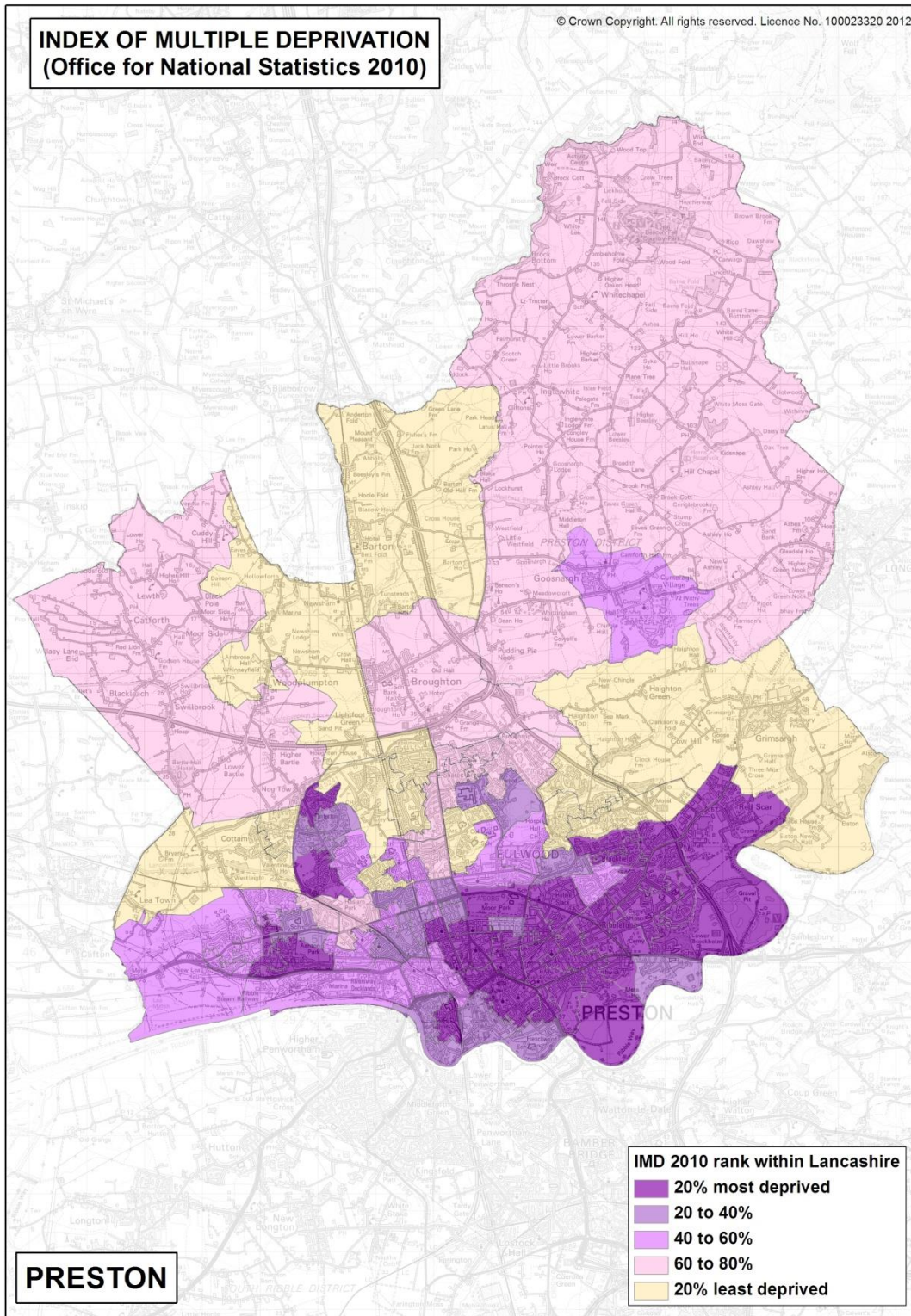
Road Safety	
Issues	<ul style="list-style-type: none"> <li>■ High numbers of children killed or seriously injured</li> <li>■ Accidents involving children in deprived areas</li> <li>■ The safety of vulnerable users, especially children and young people (including pedestrians, cyclists, motorcyclists)</li> </ul>
Summary	On average, between 2007-11, there were 93 people, including 15 children and 27 young adults (16-25 years old) killed, or seriously injured in Preston each year. Preston has some of the worst casualty rates for children and young people in Lancashire for all modes of transport. Speed and accidents resulting from excessive speed are a concern on some roads in Preston.
Environment Directorate delivery actions	<ol style="list-style-type: none"> <li>1. Offer and provide speed awareness courses.</li> <li>2. Continue to roll out the 20mph areas in residential areas, focusing on the deprived areas and engaging with schools and communities to embed the '20's plenty' message.</li> <li>3. Work with the police on appropriate engagement and enforcement through Lancashire Road Watch and Speed Tasking.</li> <li>4. Provide access to the interactive web based learning platform 'Moodle' so all schools can access road safety information and products through the e-learning platform.</li> <li>5. Deliver the following programmes in schools: <ul style="list-style-type: none"> <li>• Engagement with primary schools – pedestrian and cycling safety and other engagement initiatives.</li> <li>• Engagement with secondary schools - Wasted Lives, Youth Stars and other engagement initiatives.</li> </ul> </li> </ol>

Transport	
Issues	<ul style="list-style-type: none"> <li>■ Improving public transport links to the rest of the county and to growth centres outside of the county (for example, Manchester and Liverpool).</li> <li>■ Relieving congestion on the main routes into Preston.</li> </ul>
Summary	Preston sits in a strategic location on the county's north-south and east-west road and rail transport corridors which link Lancashire's major settlements and beyond. This combination of location and strategic role contributes to the high levels of congestion encountered in the city centre and along its principal corridors.
Environment Directorate delivery action	<ol style="list-style-type: none"> <li>1. Deliver countywide Local Transport Plan (LTP) schemes.</li> <li>2. Deliver the actions identified in the Central Lancashire Highways and Transport Masterplan for Preston. For further details see section 1.4 - Local Transport Plan.</li> <li>3. Provide local solutions to tackle road safety and congestions issues.</li> <li>4. Inspect and maintain roads and footways to keep them safe.</li> </ol>

<b>Community Safety</b>	
Issues	<ul style="list-style-type: none"> <li>■ High rates of violent and/or sexual offences</li> <li>■ High rates of alcohol misuse (adults and children)</li> <li>■ High rates of anti-social behaviour</li> <li>■ The quality of the public realm in some areas</li> <li>■ 'No Cold Calling' zones</li> <li>■ Tobacco and alcohol availability (including under-age sales and fake products)</li> </ul>
Summary	<p>Overall, 81.8% of respondents from the 2011 Living in Preston survey (undertaken by Preston City Council) were satisfied with their local area as a place to live. However the top priorities identified through the 2011 strategic assessment for Preston are to; reduce the impact of substance misuse and address alcohol related crime and disorder; reduce all violent crime; tackle anti-social behaviour – including littering, rowdy behaviour and youth nuisance; reduce reoffending rates for young people and adults; increase road safety, reducing the number of youth and adult casualties; and protect children, and reduce child sexual exploitation.</p>
Environment Directorate delivery actions	<ol style="list-style-type: none"> <li>1. Providing well-lit walkways and working street lights can have a positive impact on the perceptions of community safety.</li> <li>2. Service strands, such as trading standards can continue to contribute to a number of schemes, for example under-age alcohol sales and counterfeit products, which will impact on anti-social behaviours linked to alcohol misuse.</li> <li>3. Support and deliver initiatives that improve the local area, for example improving open spaces.</li> <li>4. Road safety actions as included in the road safety section.</li> </ol>



# Index of Multiple Deprivation 2010



## Glossary

**2 course inlay:** Resurfacing of the road whereby the top two layers are removed and replaced with new.

**20mph zone:** Engineered measures designed to prevent vehicles from exceeding 20mph.

**AONB: Area of Outstanding Natural Beauty** – An area confirmed by the government as having the highest status of protection in relation to landscape and scenic beauty, for example the Forest of Bowland.

**Bituminous Macadam:** A road/footway surfacing material, often referred to as tarmac.

**Bridge study:** Involves a review of the structure's case file and inspection reports, and requires a more detailed site inspection or survey to assess any work which may be required. The types of surveys required are identified (eg geotechnical, ecological, topographical), and if there are any issues, events, consents, constraints or consultations that need to be considered. Traffic management requirements are also considered, and whether there may be any conflicts with other ongoing or upcoming schemes.

Once these have been completed the team assess the options and produce a study, which is made up of a business case, a cost estimate and an initial programme. Subsequent to the study there will be a design or preparation phase which may sometimes alter the chosen method or programme.

**Bridge assessment:** Involves calculations to assess the bridges ability to carry daily traffic load. Existing records are reviewed and any missing data is gathered on site, including any deterioration which may adversely affect its strength. This may include digging a trial hole to the top of the deck and down the ends of the bridge to measure the depths of road fill over the deck. What happens after the assessment depends on the assessed strength of the bridge.

**Capital:** Payment for basic assets such as property, fixtures, or machinery, but does not include day-to-day operational costs.

**Carriageway inlay:** The removal of one layer of existing surfacing material and replacement with new.

**Carriageway resurfacing:** The replacing of the existing road surface with new. Can either be one layer or two.

**Carriageway retread:** A system of recycling existing carriageway material on site which substantially reduces the amount of new materials necessary. The process is not suitable for all roads and requires the application of a surface dressing treatment approximately 12 months after completion in order to seal the surface and increase the life of the road.

**CIL: Community Infrastructure Levy** - A levy that local councils can now impose on most types of new build developments in order to provide for the necessary infrastructure to support that, or future development. Once CIL charges are set there are few restrictions on what the money collected can be used for.

**CRP: Community Rail Partnership** - A government initiative developed to promote community involvement and ownership of rural and local railways. CRPs enable local communities to have a greater say in the local train service provided.

**Culvert:** A drain or covered channel that crosses under a road or railway.

**DfT: Department for Transport** - This is the government department responsible for the English transport network and a limited number of transport matters in Scotland and Wales. It provides leadership across the transport sector to achieve its objectives, working with regional, local and private sector partners to deliver many of the services.

**ENCTS: English National Concessionary Travel Scheme** - A scheme that enables free travel on local bus services throughout England for all older and most disabled pass holders between 9.30am and 11.00pm Monday to Friday and all day at weekends and on public holidays through NoWcard smart cards.

**Footway recovery:** This work may involve renewing kerbs and the surface of the footway, providing edging, replacing damaged slabs or replacing slabs with tarmac.

**Footway reconstruction:** Removal of the existing surface and replacing it with new material.

**Footway resurface:**

**Bitumen** - removal of existing road surface and replacing it with new tarmac.

**Flagged** - removal of the concrete flags and replacing them with new tarmac.

**Inner core area:** Built up area or town centre area.

**HLF: Heritage Lottery Fund** - A fund that invests in heritage, people and communities across the UK with money raised through the National Lottery.

**Highways England:** A new company established through the Infrastructure Act 2015 that will be responsible for the Strategic Road Network in England from April 2015. The Strategic Road Network comprises those roads, principally motorways, which are not the responsibility of the county council.

**HWRC:** Household Waste Recycling Centre – a place for local residents to recycle waste from their homes

**LPS: Lancashire Parking Services** - Responsible for the enforcement of parking restrictions on the highway.

**Lancashire Road Watch:** Targeted enforcement action with Lancashire Constabulary for roads not covered by 20mph speed limits that address specific sections of the highway with a high accident record and where speed is an issue.

**LED's: Light-emitting diode** - An electronic semiconductor device that emits light when an electric current passes through it.

**LGF: Local Growth Fund:** Established by the Government in June 2013 and effective from 2015/16, the Local Growth Fund includes all central government funding for local major transport schemes and a proportion of grant funding previously paid as direct grant to local authorities for smaller scale transport improvements. Access to the fund is through a Growth Deal negotiated between the Government and the Local Enterprise Partnership.

**LTP: Local Transport Plan** - An approved strategy which takes a ten year view (to 2021) of Lancashire County Council's priorities and broad activities for transport and the way we travel. The strategy is delivered through a rolling three-year programme updated annually in an Implementation Plan.

**MARIO: Maps and Related Information Online** - Lancashire County Council's interactive mapping website. It can be used to access information about an area in Lancashire, or look at services

provided by the county council and its partners. It can be used to find your street, your house, or anywhere else in the county: <http://mario.lancashire.gov.uk/agsmario/>

**Microasphalt:** A thinly laid material which can be overlaid on top of the existing carriageway to give a smoother riding surface. It also waterproofs the existing surface and aids skid resistance.

**NowStar:** A smart card scheme whereby up to £50 can be stored on a card which may then be used to make payment for tickets on any bus with all bus operators.

**Outer core area:** Rural areas.

**Parking enforcement warning notices:** Issued to vehicles parking in locations where new restrictions have been introduced, or where there has been a significant change to existing restrictions. Warning Notices are also issued to disabled Blue Badge holders when they fail to display their badge correctly. Any subsequent failures to display the badge correctly may then result in a Penalty Charge Notice being issued.

**Pedestrian refuge:** A small, raised section of pavement placed in the road, to provide safety for pedestrians from passing motor vehicles.

**Pelican crossing:** A crossing with traffic signals that are controlled by pedestrians with a red/green man signal system.

**Pothole repair (permanent):** The site visit and repair of a highway defect in one visit using a process and materials that will ensure a long lasting repair.

**Pothole repair (temporary):** Some potholes whilst being small in area lie within a much greater area of failed surface material. Often the nature of the defect requires an urgent temporary repair to make it safe, and in such instances only the hole itself is filled. The larger area (including the original temporary repair) is subsequently repaired as part of a programme of more substantial maintenance/resurfacing works.

**Pre-patching:** A process where a substandard area of road is removed by hand or machine and replaced with new material. Most roads scheduled for surface dressing require some 'pre-patching' treatment which is best completed a year in advance of the resurfacing work taking place.

**PROW:** Public Rights of Way which can be roads, paths or tracks. They can run through towns, countryside or private property.

**Puffin crossing:** A crossing where the system utilises sensors which detect the presence of pedestrians waiting, and their journey as they cross the road.

**Revenue:** Payment for the day-to-day running of services, including maintenance and running expenses of buildings and equipment.

**Section 106 agreements/planning obligations:** Agreements entered into by the land owner and any other party with a legal interest in the development site negotiated through the Section 106 of the Town and Country Planning Act. These are legal agreements that cover the things the land owner agrees to do/not to do, and the circumstances and timescales within which these will occur.

**Section 38 scheme/project:** Agreements with developers under Section 38 of the Highways Act 1980. These are legal agreements between the developer and the county council to ensure that work

carried out on the highway by the developer reaches adoptable standards (which is then maintainable at public expense).

**Section 278 scheme/project:** Agreements with developers under Section 278 of the Highways Act 1980. These agreements relate to changes needed to the highway as part of a development proposal, such as a junction improvement to cope with traffic visiting a new retail park. In these cases the alteration works are paid for by the developer.

**Slurry seal footway:** A low cost preventative maintenance treatment that extends the life of underlying layers of the footway. The material acts as a waterproofing to prevent the access of water. This treatment cannot be carried out in frosty or wet weather.

**STU: Safer Travel Unit** - A unit established to reduce anti-social behaviour and crime on the bus network, to allow people to travel easily and safely.

**Surface dress carriageway:** A highway maintenance technique that involves the application of tarmac and chippings to an existing road surface. This can help prevent against the deterioration of the road surface and seals the surface against the access of water. It can also restore levels of skid resistance and reduce spray caused by vehicles travelling on wet road surfaces.

**TRO: Traffic Regulation Orders** - A legal order, which allows the authority to place restrictions on the highway including speed limits, limited waiting zones, resident permit zones, double/single yellow lines and 'pay and display' parking.

**Toucan crossing:** A type of crossing that allows pedestrians as well as cyclists to cross the road.

**VIZION installation (street lighting):** Tele-management system which enables energy reduction through the dimming of main road lighting.

**Winter service plan:** Sets out the requirements and advice for the winter service on all highways for which LCC is the highway authority. It supports the priorities set out in the Local Transport Plan 2011-2021 by ensuring that, as far as is reasonably practicable, the highway network continues to provide a safe and reliable passage for all users in icy and snowy conditions.

## Contact Us

Please do not hesitate to contact us should you have any questions, or if you would like to discuss any element of this Commissioning Plan.

### Joanne Reed

**Head of Service for Information, Policy  
and Commissioning (Live Well)**

[joanne.reed@lancashire.gov.uk](mailto:joanne.reed@lancashire.gov.uk)

Tel: 01772 530897

County Hall

Preston

PR1 8RE

### Janet Wilson

**Commissioning Manager**

[janet.wilson@lancashire.gov.uk](mailto:janet.wilson@lancashire.gov.uk)

Tel: 01772 538647

County Hall

Preston

PR1 8RE

<b>Main contact details address</b>	<b>Lancashire County Council</b> PO Box 78, County Hall, Fishergate, Preston, Lancashire, PR1 8XJ
<b>Email</b>	<b><u><a href="mailto:enquiries@lancashire.gov.uk">enquiries@lancashire.gov.uk</a></u></b>
<b>General enquires</b>  <b>Lancashire Highways</b>	<b>0300 123 6701</b>  <b>0300 123 6780</b> <b><u><a href="mailto:highways@lancashire.gov.uk">highways@lancashire.gov.uk</a></u></b>  These are local call rate numbers