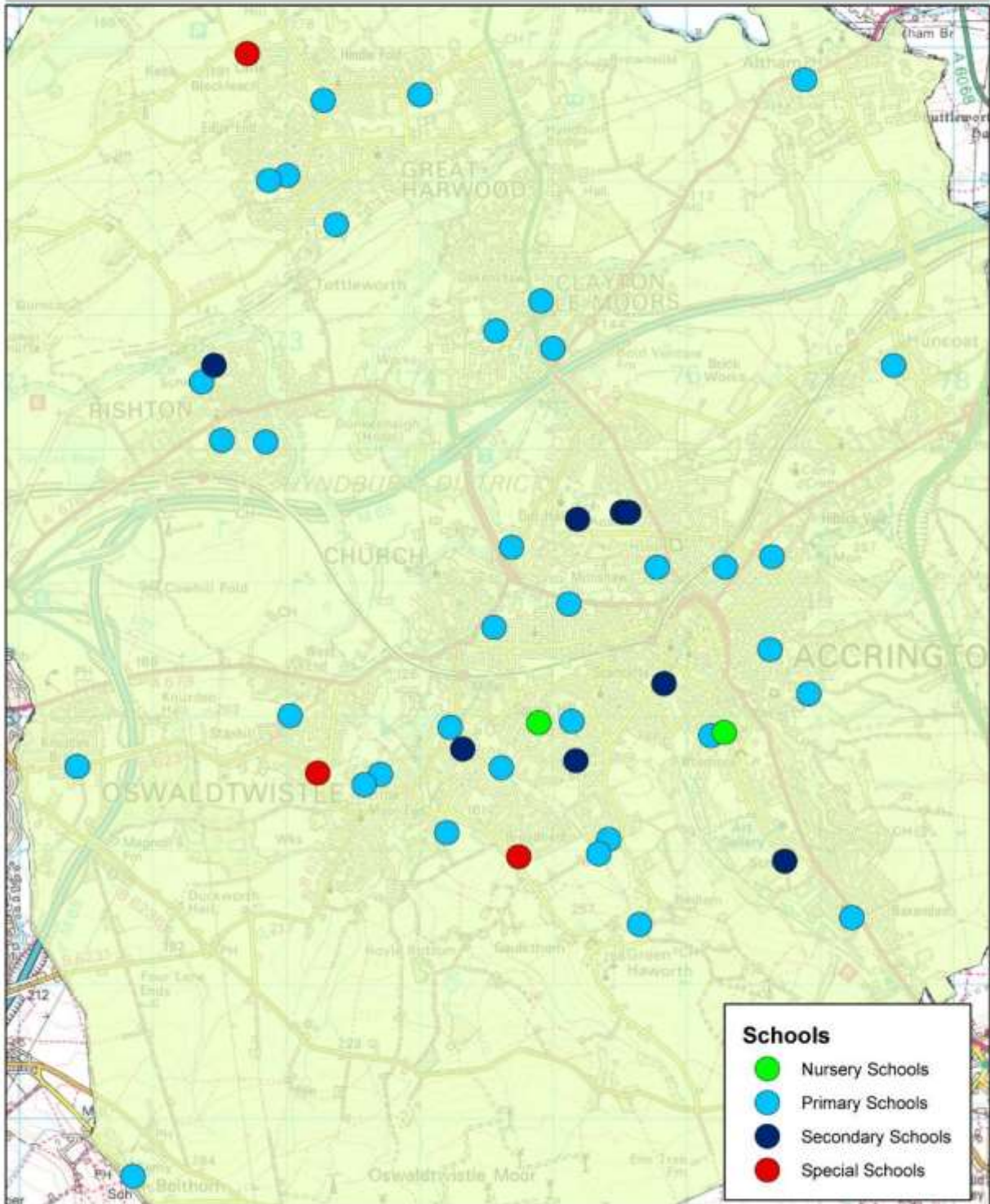


# Hyndburn

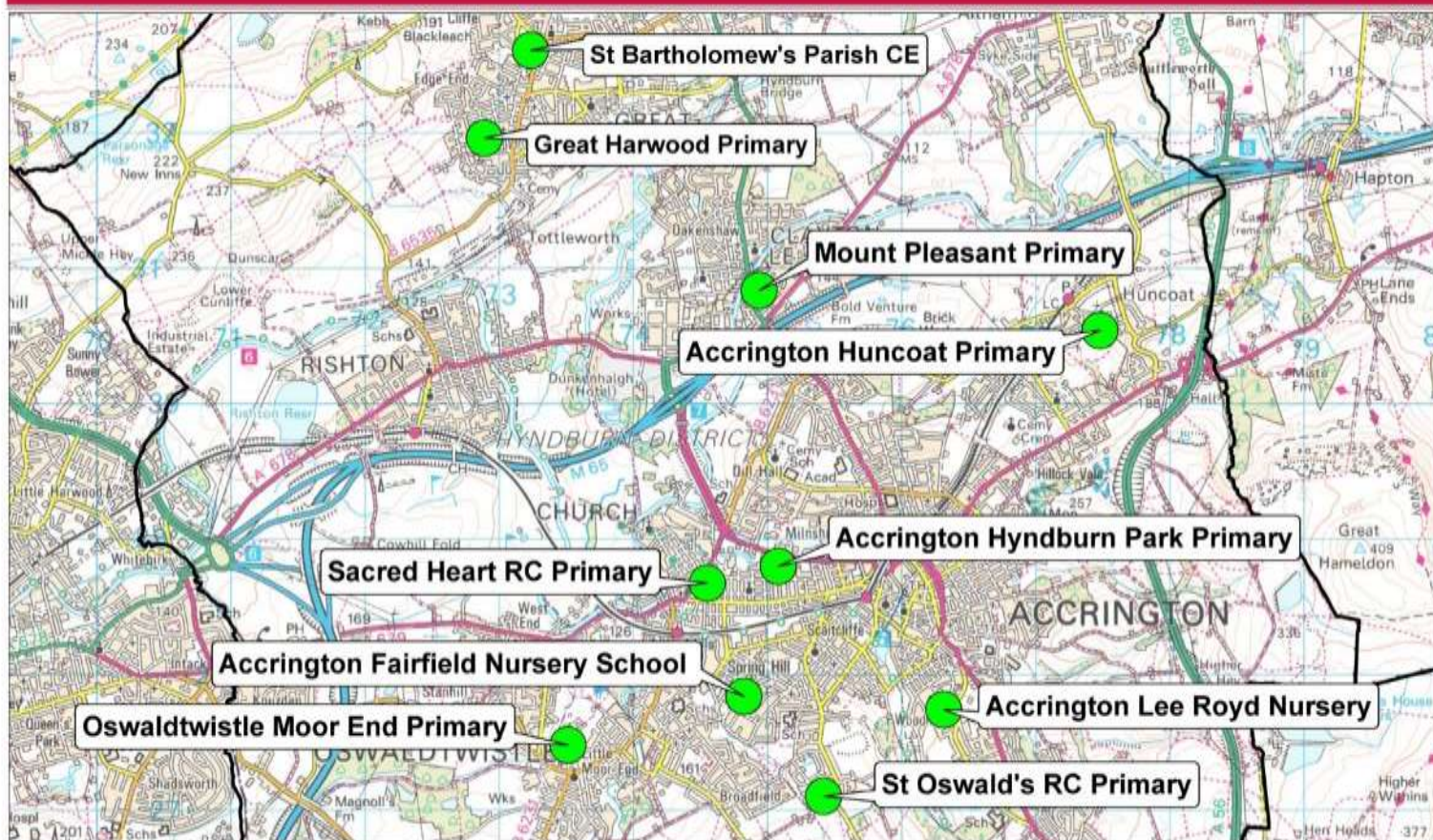
## Hyndburn

Map scale : 1:37,547



# Nursery Schools

## Hyndburn

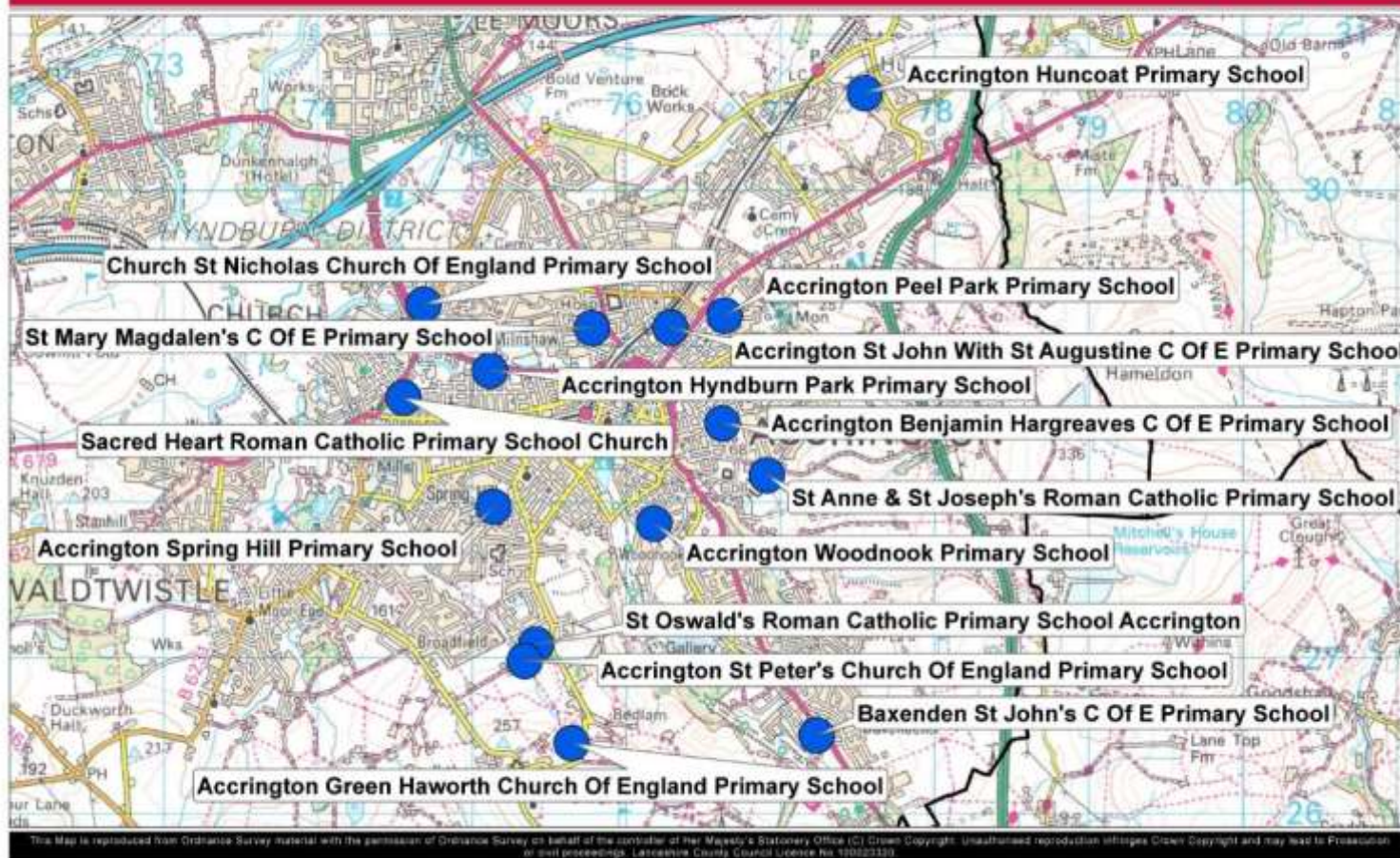


This Map is reproduced from Ordnance Survey material with the permission of Ordnance Survey on behalf of the controller of Her Majesty's Stationery Office (C) Crown Copyright. Unauthorised reproduction infringes Crown Copyright and may lead to Prosecution or civil proceedings. Lancashire County Council Licence No. 106023326

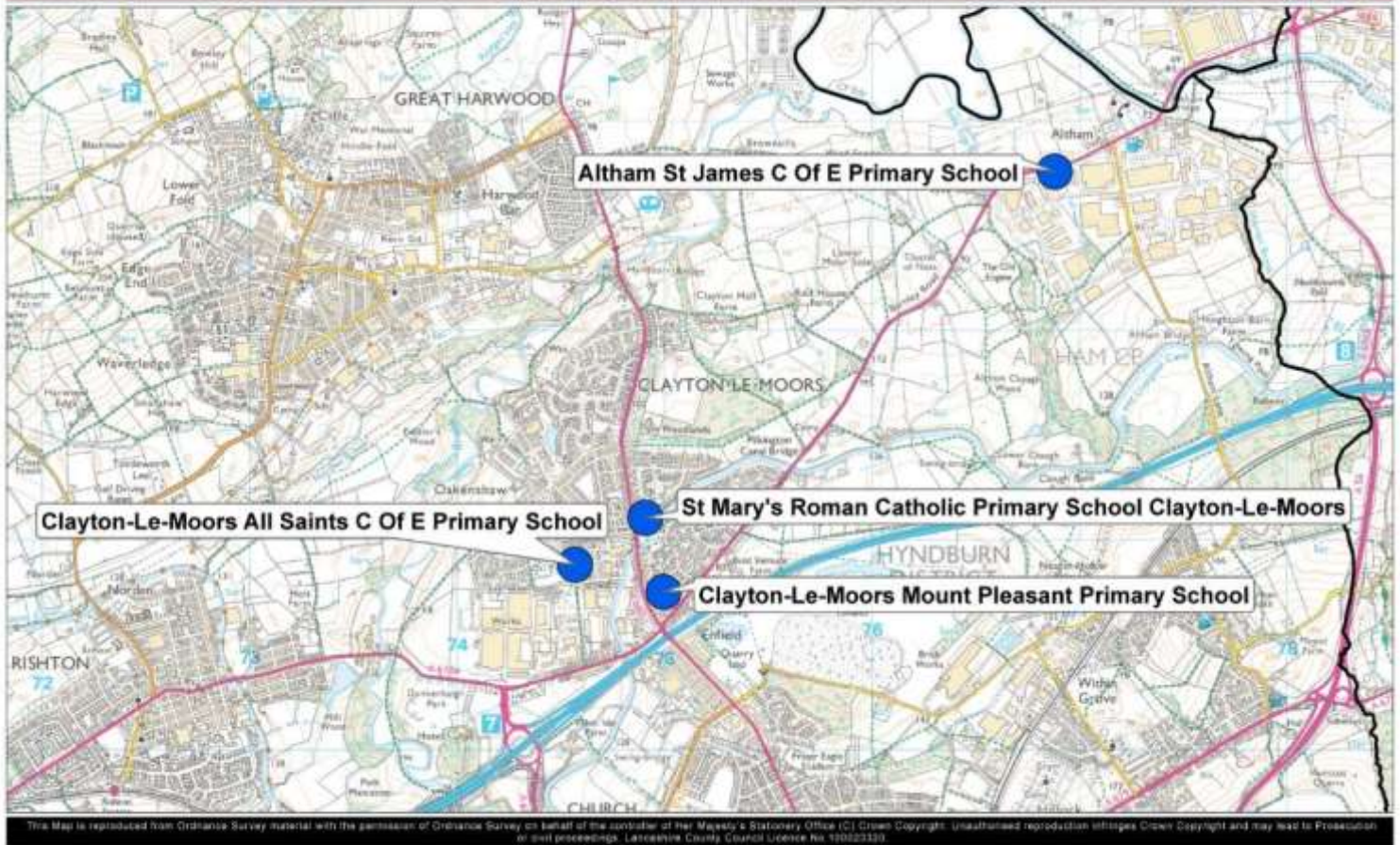
DFE Number	School Number	School name	Type	LEA Nursery Number of Places		Total No on roll Jan 2014
				N1	N2	
2096	11004	Accrington Huncoat Primary School	C	11	28	39
2097	11005	Accrington Hyndburn Park Primary School	C	0	60	60
3763	11012	St Oswald's Roman Catholic Primary School.	VA	11	31	42
2107	11025	Accrington	C	0	26	26
2105	11029	Oswaldtwistle Moor End Community Primary School	C	9	37	46
3764	11033	Clayton-le-Moors Mount Pleasant Primary School.	VA	11	37	48
3307	11038	Sacred Heart Roman Catholic Primary School.	VA	0	17	17
2067	11042	Church	C	1	27	28
1000	11160	Great Harwood St Bartholomew's Parish CoE VA Primary School	C	12	100	112
1024	11161	Accrington Lee Royd Nursery School	C	10	90	100

# Primary Schools

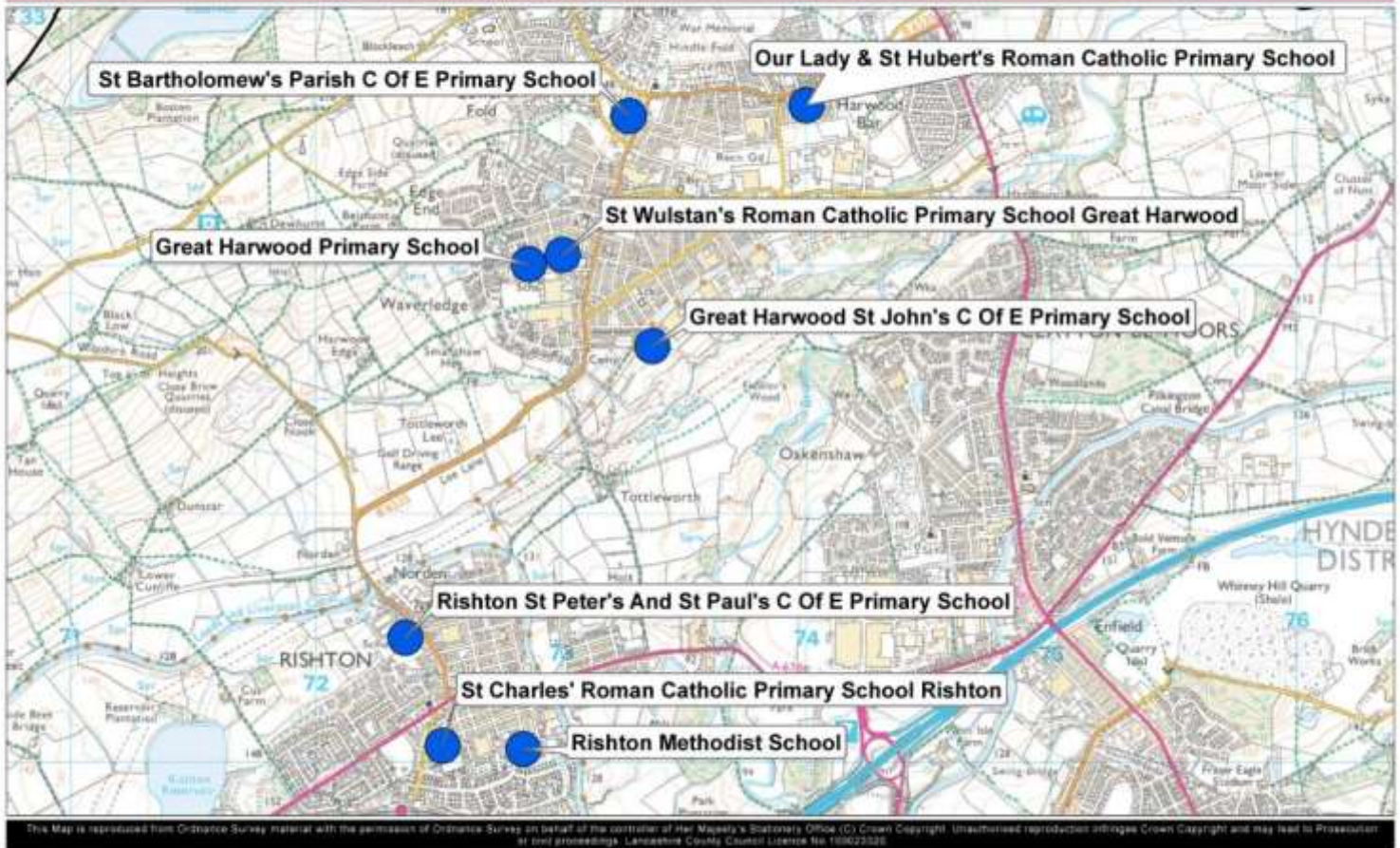
## Accrington



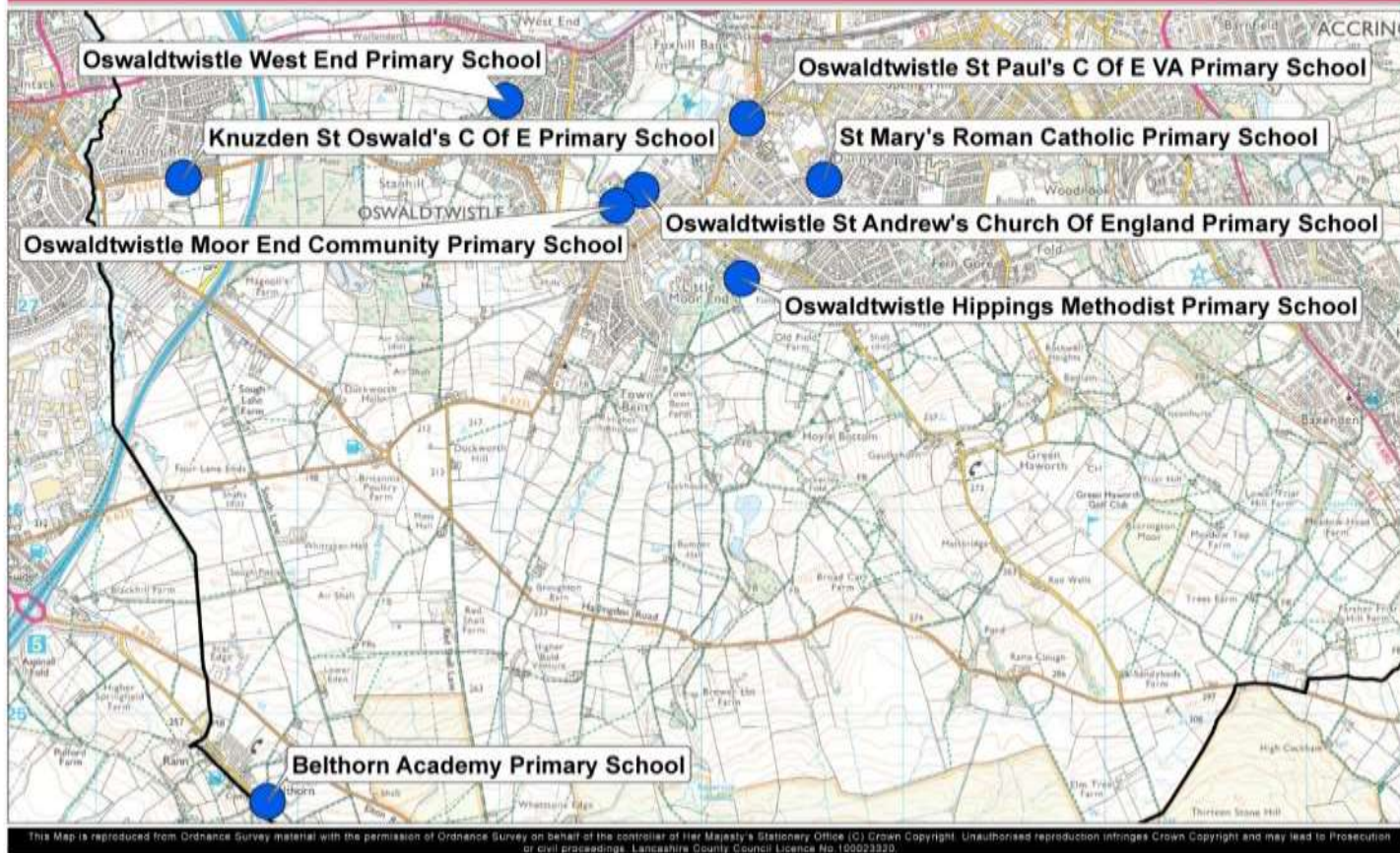
DFE Number	LCC No	School Name	Type	PAN	Number of Children on Roll						Total No on Roll Jan 2014	Net Capacity Jan 2014	% Surplus Places	
					R	1	2	3	4	5				6
3334	11001	Baxenden St John's Church of England Primary School	VA (CE)	30	30	26	26	29	30	25	30	226	210	-8%
3336	11002	Accrington Benjamin Hargreaves CofE Primary School	VA (CE)	23	25	22	23	23	24	23	22	162	161	-1%
3337	11003	Accrington Green Haworth Church of England Primary School	VA (CE)	12	11	12	10	13	13	14	10	83	84	1%
2096	11004	Accrington Huncoat Primary School	Community	30	30	29	26	20	21	30	22	178	210	15%
2097	11005	Accrington Hyndburn Park Primary School	Community	75	61	54	64	60	63	55	61	418	525	20%
2099	11006	Accrington Peel Park Primary School	Foundation (Trust)	90	89	90	86	83	85	84	84	601	570	-5%
3762	11008	St Anne and St Joseph's Roman Catholic Primary School. Accrington	VA (C)	45	45	35	43	44	50	47	50	314	315	0%
3340	11010	Accrington St John with St Augustine CofE Primary School	VA (CE)	30	28	21	23	27	26	19	25	169	210	20%
3342	11011	Accrington St Mary Magdalen's Church of England Primary School	VA (CE)	30	31	26	28	26	35	30	24	200	205	2%
3763	11012	St Oswald's Roman Catholic Primary School. Accrington	VA (C)	20	20	18	16	16	17	16	17	120	140	14%
3105	11013	Accrington St Peter's Church of England Primary School	VC (CE)	30	29	30	27	17	21	27	22	173	210	18%
2101	11014	Accrington Spring Hill Primary School	Community	60	59	59	53	48	53	55	59	386	420	8%
2820	11015	Accrington Woodnook Primary School	Community	40	40	36	26	33	33	31	29	228	285	20%
3347	11031	Church St Nicholas Church of England Primary School	VA (CE)	30	29	30	27	30	30	26	30	202	210	4%
3764	11033	Sacred Heart Roman Catholic Primary School. Church	VA (C)	28	30	28	23	27	27	27	23	185	196	6%



DFE Number	LCC No	School Name	Type	PAN	Number of Children on Roll						Total No on Roll Jan 2014	Net Capacity Jan 2014	% Surplus Places	
					R	1	2	3	4	5				6
2105	11029	Clayton-le-Moors Mount Pleasant Primary School	Community	60	60	43	58	49	46	35	45	336	400	16%
3765	11030	St Mary's Roman Catholic Primary School. Clayton-le-Moors	VA (C)	17	17	18	14	17	22	12	18	118	120	2%
3599	11036	Altham St James Church of England Primary School	VA (CE)	9	8	8	9	2	5	9	8	49	60	18%
3348	11506	Clayton-le-Moors All Saints Church of England Primary School	Academy	40	40	40	39	40	41	40	38	278	280	1%



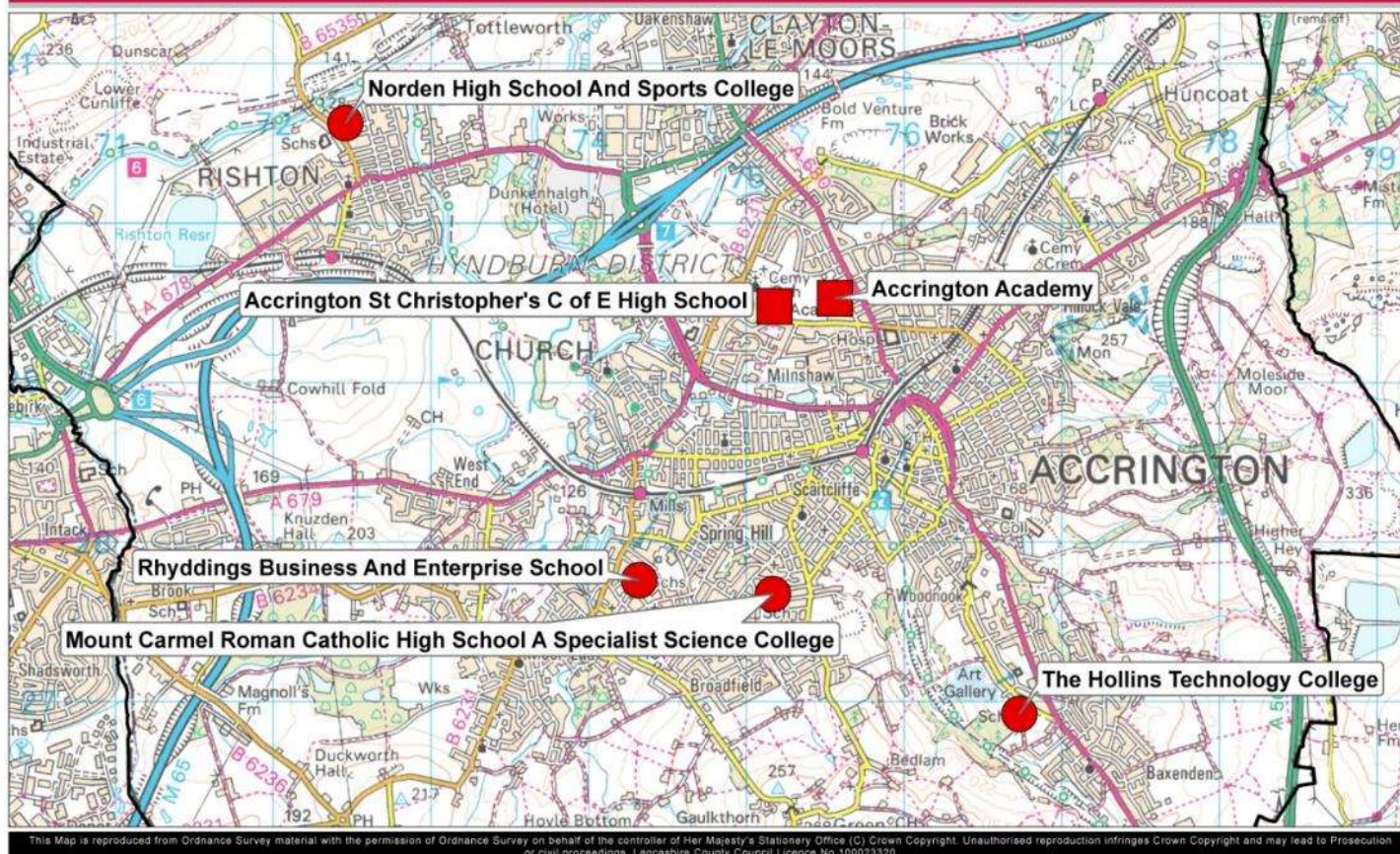
DFE Number	LCC No	School Name	Type	PAN	Number of Children on Roll						Total No on Roll Jan 2014	Net Capacity Jan 2014	% Surplus Places	
					R	1	2	3	4	5				6
3307	11038	Great Harwood St Bartholomew's Parish CofE VA Primary School	VA (CE)	30	30	30	30	31	30	27	24	202	199	-2%
3308	11039	Great Harwood St John's Church of England Primary School	VA (CE)	25	15	17	21	14	26	20	20	133	175	24%
3746	11040	Our Lady & St Hubert's Roman Catholic Primary School.Gt Harwood	VA (C)	23	27	28	21	29	24	22	24	175	161	-9%
3747	11041	St Wulstan's Roman Catholic Primary School. Great Harwood	VA (C)	25	26	22	26	27	26	24	24	175	175	0%
2067	11042	Great Harwood Primary School	Community	45	38	23	23	37	25	27	32	205	315	35%
3130	11045	Rishton Methodist School	VC (M)	30	25	21	24	26	16	19	21	152	210	28%
3316	11046	Rishton St Peter's and St Paul's CofE Primary School	VA (CE)	30	29	29	28	29	26	30	24	195	208	6%
3752	11047	St Charles' Roman Catholic Primary School. Rishton	VA (C)	30	28	30	28	28	29	32	27	202	210	4%



DFE Number	LCC No	School Name	Type	PAN	Number of Children on Roll						Total No on Roll Jan 2014	Net Capacity Jan 2014	% Surplus Places	
					R	1	2	3	4	5				6
3134	11018	Oswaldtwistle Hippings Methodist Primary School	VC (M)	30	30	29	30	30	30	34	28	211	210	0%
3195	11020	Oswaldtwistle St Andrew's Church of England Primary School	VC (CE)	45	45	29	28	30	28	28	28	216	216	0%
3353	11021	Knuzden St Oswald's Church of England Primary School	VA (CE)	30	30	29	32	28	28	31	30	208	207	0%
3766	11023	St Mary's Roman Catholic Primary School. Oswaldtwistle	VA (C)	38	38	39	34	31	36	38	34	250	270	7%
2108	11024	Oswaldtwistle West End Primary School	Community	30	30	31	30	28	30	30	31	210	205	-2%
2107	11025	Oswaldtwistle Moor End Community Primary School	Community	30	32	20	31	24	26	25	16	174	204	15%
3355	11026	Oswaldtwistle St Paul's CofE Voluntary Aided Primary School	VA (CE)	26	29	23	18	18	23	20	16	147	186	21%
5205	<b>11504</b>	Belthorn Academy Primary School	Academy	30	28	30	23	33	22	20	16	172	207	17%

## Secondary Schools

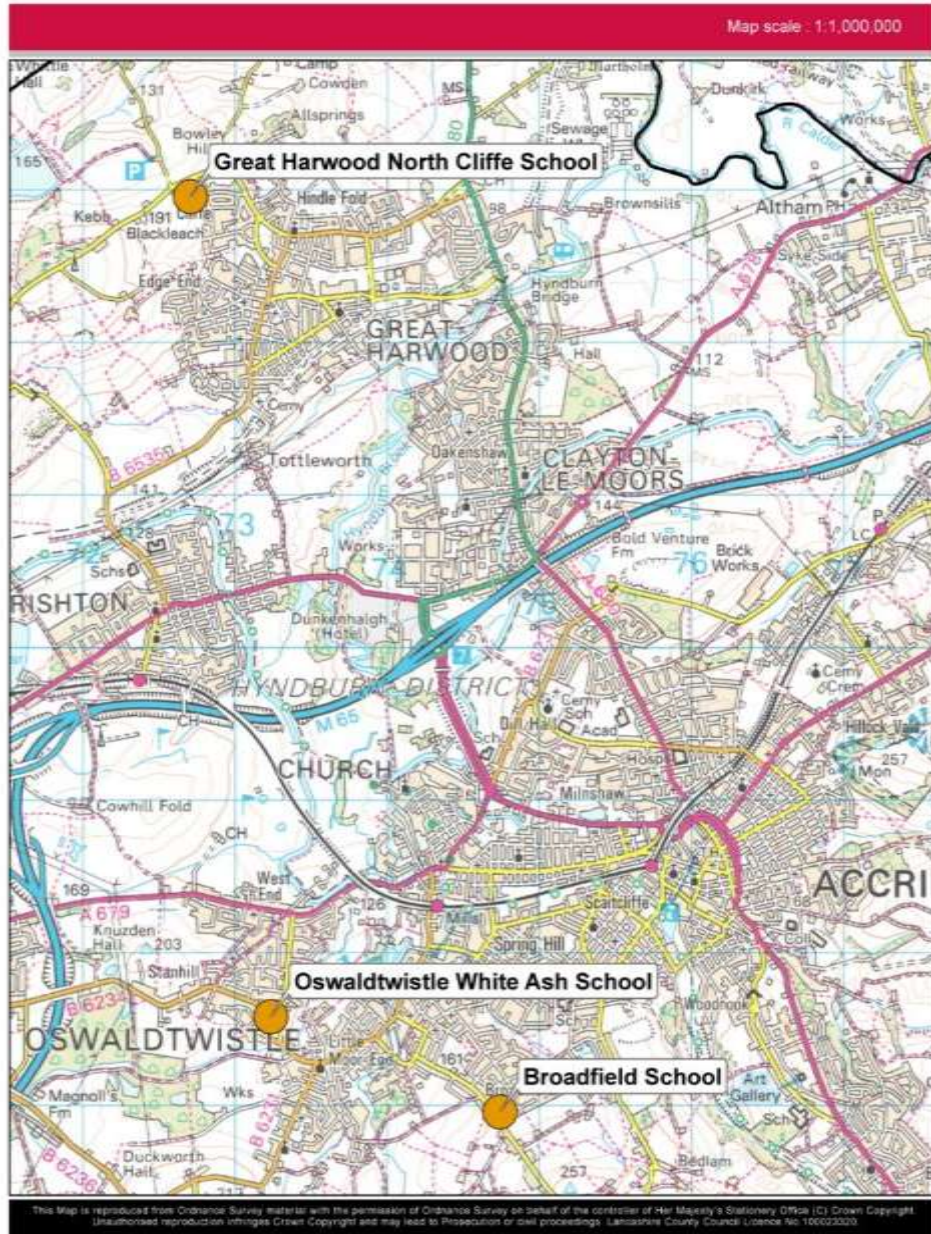
### Hyndburn



School Number	School Name	Type	PAN	No of Children on Roll						Total No on Roll Jan 2014	Notional 11-16 capacity	Net Capacity Jan	% Surplus Places	
				7	8	9	10	11	12					13
11101	Norden High School And Sports College	Comm	135	113	102	130	106	127			578	728	728	21%
11102	The Hollins Technology College	Comm	158	155	158	157	155	158			783	807	807	3%
11103	Mount Carmel RC High School A Specialist Science College	VA (C)	162	130	152	141	144	146			713	810	810	12%
11105	Rhyddings Business and Enterprise School	Comm	230	103	99	152	144	139			637	1167	1167	45%
11501	Accrington Academy	Acad	180	185	202	179	179	175	109	78	920	975	1150	6%
11505	Accrington St Christopher's Church of England High School	Acad	195	210	212	201	202	216	157	144	1041	965	1280	-8%

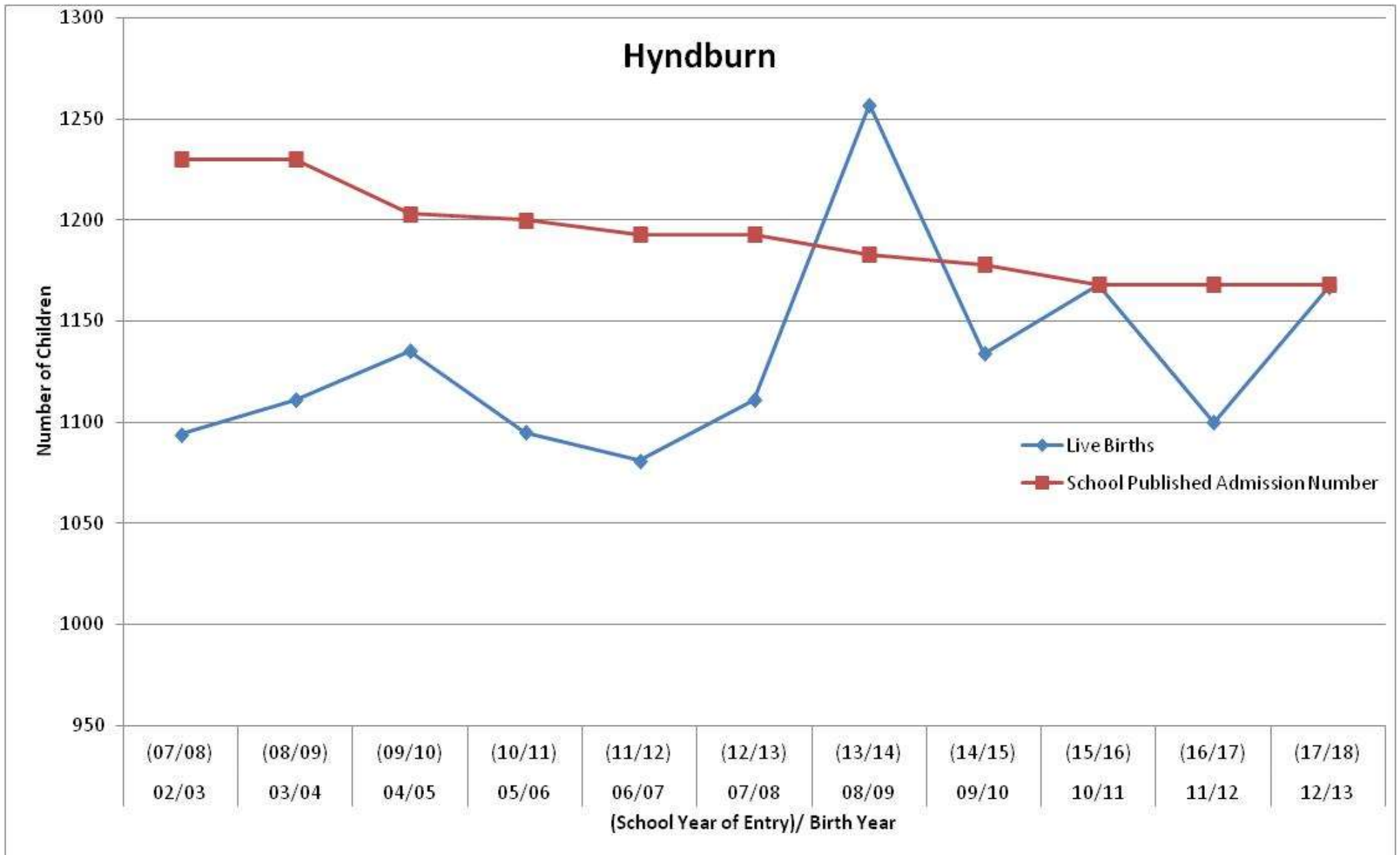
# Special Schools

## Hyndburn



DfE No	School No	Establishment	Total Number of Children
7099	11130	Oswaldtwistle White Ash School	80
7060	11131	Broadfield Specialist School For SEN (Cognition and Learning)	133

**Graph Comparing Birth Data against School Places**



## Birth and Roll Projection Information for Hyndburn

Year of Birth	Total Number of Births that year	Pupils to enter Reception in Year	Historical Average Take-up Rate	Projected Number of Pupils Entering Reception*	September 2014 PAN
09/10	1134	14/15	94%	1066	1196
10/11	1168	15/16		1098	
11/12	1100	16/17		1034	
12/13	1167	17/18		1097	

\* The projected number of pupils entering reception does not include increases due to current or future housing developments, which could significantly increase the number of pupils entering the schools.