

WELCOME TO
Beaconview

SKELMERSDALE

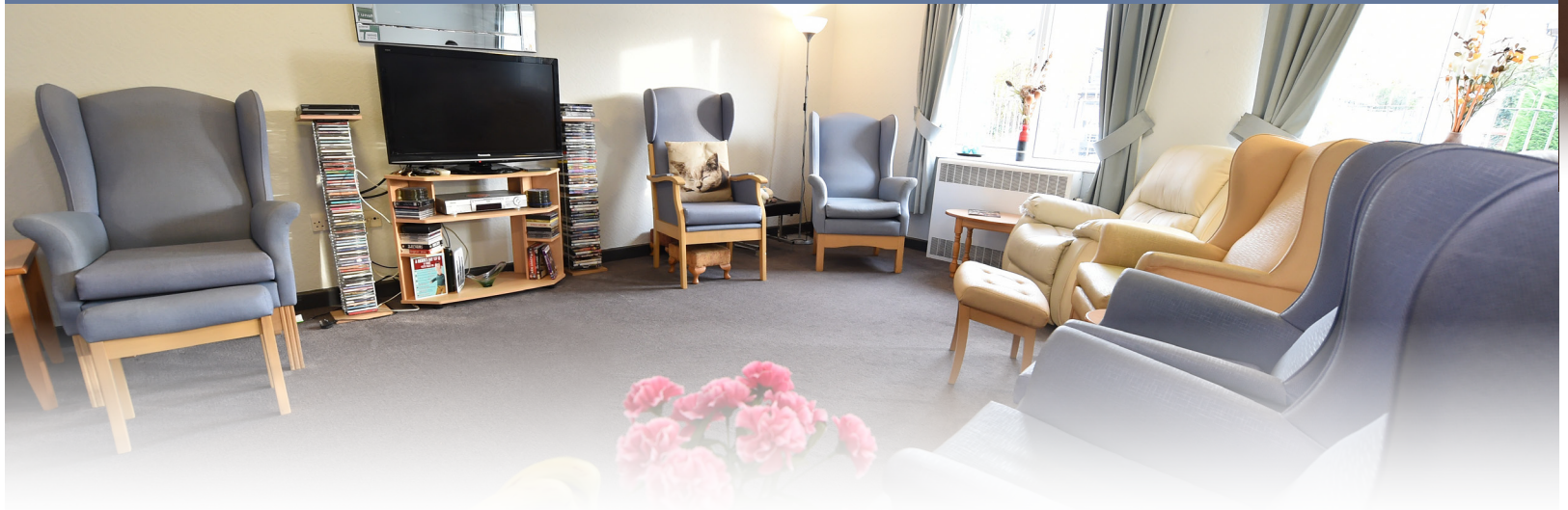


Beaconview
Kiln Lane, Skelmersdale,
WN8 8PW

For more information
please contact us on:
01695 725682



Your home. Your life. Your way.



Your home

Beaconview is a purpose built two storey home for older people situated in Skelmersdale.

Beaconview is one of 16 care homes managed by Lancashire County Council and offers quality, safe, comfortable care and support for up to 46 people across three homely separate areas.

We offer friendly, compassionate, person centred support to people living with dementia who choose Beaconview as their home. We also welcome older people for Residential care, short term respite stays and admissions for people who need intermediate care services to support their rehabilitation.

We have a range of facilities including nicely furnished lounges and dining areas with kitchen spaces. People who chose Beaconview as their home are welcome to personalise their bedrooms to their own taste with comfy furniture, televisions or belongings that will make their room feel like home.

There are ample bathrooms, showers and toilet facilities, some bedrooms have en-suite whilst the others have washbasins.

The accredited dining experience at Beaconview offers fresh, locally sourced ingredients expertly prepared to produce a wide choice of delicious meals. Alternative options are always available. Drinks and snacks are accessible for people who live in the home and their visitors to enjoy throughout the day. Sample menus are available if you would like to view them.

Beaconview has well-maintained garden spaces with seating areas and a spacious, bright conservatory that gives great views for you and your visitors to enjoy all year round.



“ People who live at Beaconview said:

“I like living here, the staff are very caring and can't do enough for me”

“The care staff are pretty good, I can't knock them”

“I have been here for a very long time, everyone is happy, I love the activities, sometimes I just watch but there is always something going on”

“I love everyone, they do a wonderful job. The staff even got me a signed photo of Cliff

Richard. I get my washing done! We love listening to the music in the morning. If I want to spend time alone in my bedroom, the staff give me my privacy”

“The care staff do anything for you. I only eat small portions, but the meals I have had have been good. I am finding the physio very helpful and I am hopeful that I will be returning home soon”

”



Your Life

Our dedicated team of staff will help and support you to enjoy living at Beaconview

We offer a variety of activities and social opportunities to enhance your wellbeing, these are run regularly by the homes activities care assistant and staff team.

You can take a look at our monthly activities calendar for up and coming events.

Your friends and family are always welcome at Beaconview.

Here at Beaconview we have established strong links with the community to help you stay connected. We receive regular visits from the children at the local school and college.

For people who like to get out and about, Beaconview is close to local amenities including a library, Ormskirk town centre, Burscough, the train station and the canal that passes through Hoscar Moss

A hairdresser, optician and chiropodist are also available for people that live at Beaconview. Church ministers visit monthly and the optician and chiropodist visit regularly or when requested.

Everyone at Beaconview is included in marking celebrations such as Christmas, Birthdays and Halloween. Fun themed activities and social events take place and everyone is welcome.

Your Way

Whether it is support to maintain your skills and hobbies or trying new experiences, our well trained staff team will work with you and your families to offer the support you would like to have.

Our focus is offering you person centred quality care. You have access to your own keyworker and together you will create a support plan to make sure we provide the best and most appropriate care to meet your requirements.

Our care staff at Beaconview are fully trained in supporting people to maintain their independence.

Alongside our residential service we also offer intermediate care, and we have visiting physiotherapists, occupational therapists and technical instructors who work for the NHS to offer therapy to people requiring this service.





Beaconview at a glance:



A compassionate
and committed
staff team



46 single bedrooms



Facilities

Choice of menus
Lounges
Free Wi fi throughout
Hairdressing Salon
Lovely outdoor spaces
Lift access
Wheelchair accessible
Electronic call system



Address

Beaconview
Kiln Lane,
Skelmersdale,
WN8 8PW

Lancashire County Council's older people care services

16 local Authority care homes regulated by the Care Quality Commission (CQC)

All staff are recruited following a robust Lancashire County Council recruitment policy and have clearance from the Disclosure and Barring Service (DBS).

All staff are trained to NVQ standard and receive continuous mandatory training.



Services

Residential Care
Respite Care
Dementia Care
Intermediate Care

Our vision is
to be the best
quality service, safely
supporting older
people with kindness,
dignity, care and
compassion to live
their life their way.

For new enquiries and information about fees,
please call us on: **01695 725682**

If you would like to find out more, feel free to contact
us and make arrangements for a chat.