



CITY DEAL
Preston, South Ribble & Lancashire

WHO WE ARE

Costain is one of the country's leading infrastructure companies, responsible for building and maintaining the nation's transport system – from motorways and rail, to airports and ports. Indeed, Management Today magazine announced the league table for Britain's Most Admired Companies in 2015 in which Costain was positioned 33; the highest ranking construction company and ahead of other leading brands including Virgin Atlantic, Coca Cola Ent and Marks and Spencer.

Costain's roots are in the north west, we were founded in 1865 when Richard Costain moved from his home on the Isle of Man to move to Liverpool and set up as a jobbing builder. By the 1930s Costain established its reputation as a Civil Engineering contractor with the construction of the **Trans-Iranian Railway**. Since then, we have been involved in many of the country's significant and challenging infrastructure projects from the Thames Barrier, Channel Tunnel and most recently Walton Bridge, only the sixth bridge to be built over this part of the Thames in 265 years.

IN THE NORTH WEST

Currently in the north west we:

- recently completed a number of highways schemes including **Heysham to M6 Link Road** for Lancashire County Council, the A556 Knutsford to Bowdon Improvement for Highways England and Manchester SMART Motorways
- as part of ABC delivering electrification project for Network Rail
- recently completed works for Manchester Airport including runway and taxiway upgrades
- recently completed **3 Asset Management Plan (AMP) Framework** term contracts for United Utilities
- recently finished the Greater Manchester Waste Project - the largest waste Private Finance Initiative (PFI) in the UK.



TRANS IRANIAN RAILWAY BRIDGE



HEYSHAM TO M6 LINK



WATER AMP4

Keeping you updated

Website: www.lancashire.gov.uk/pwd

Email: citydeal@lancashire.gov.uk

Follow us on @lancscitydeal





DURING CONSTRUCTION

WHO IS COSTAIN?



Costain is a British based international engineering solutions provider that has been delivering some of the most innovative and world-class engineering and technology solutions for over 150 years.

Our projects include the Thames Barrier, Channel Tunnel and most recently and locally:

- The £103m Heysham to M6 Link Road project for Lancashire County Council in Lancaster
- The £102m A556 Knutsford to Bowdon Improvement Scheme for Highways England.

We have a proven track record for delivery. Our Harbour Way & Port Talbot PDR scheme was delivered 12 weeks early and achieved 18% savings, and Walton Bridge (the first new road crossing of the Thames in 30 years) achieved 20% savings.

Our technical excellence was recognised in 2010 when we were awarded the industry New Civil Engineer Contractor of the Decade Award and in 2014 we were awarded NEC Contractor of the Year.

CURRENT WORK IN THE NORTH WEST

We have a solid and consistent work base within the north west. Sometimes we work under our client's brand or in partnership with others:



United Utilities - Since 2002 as part of Galliford Costain Atkins (GCA) to maintain your water and wastewater services.



Manchester Smart Motorways - Upgrading the M60 from J8 to J20 of the M62 to a managed motorway standard to improve capacity in a 4-way joint venture.

WE WELCOME YOUR SUGGESTIONS...

About how we can become involved in your community while we are here. Give us your suggestions about how we can offer assistance to local projects and community groups or events important to you.

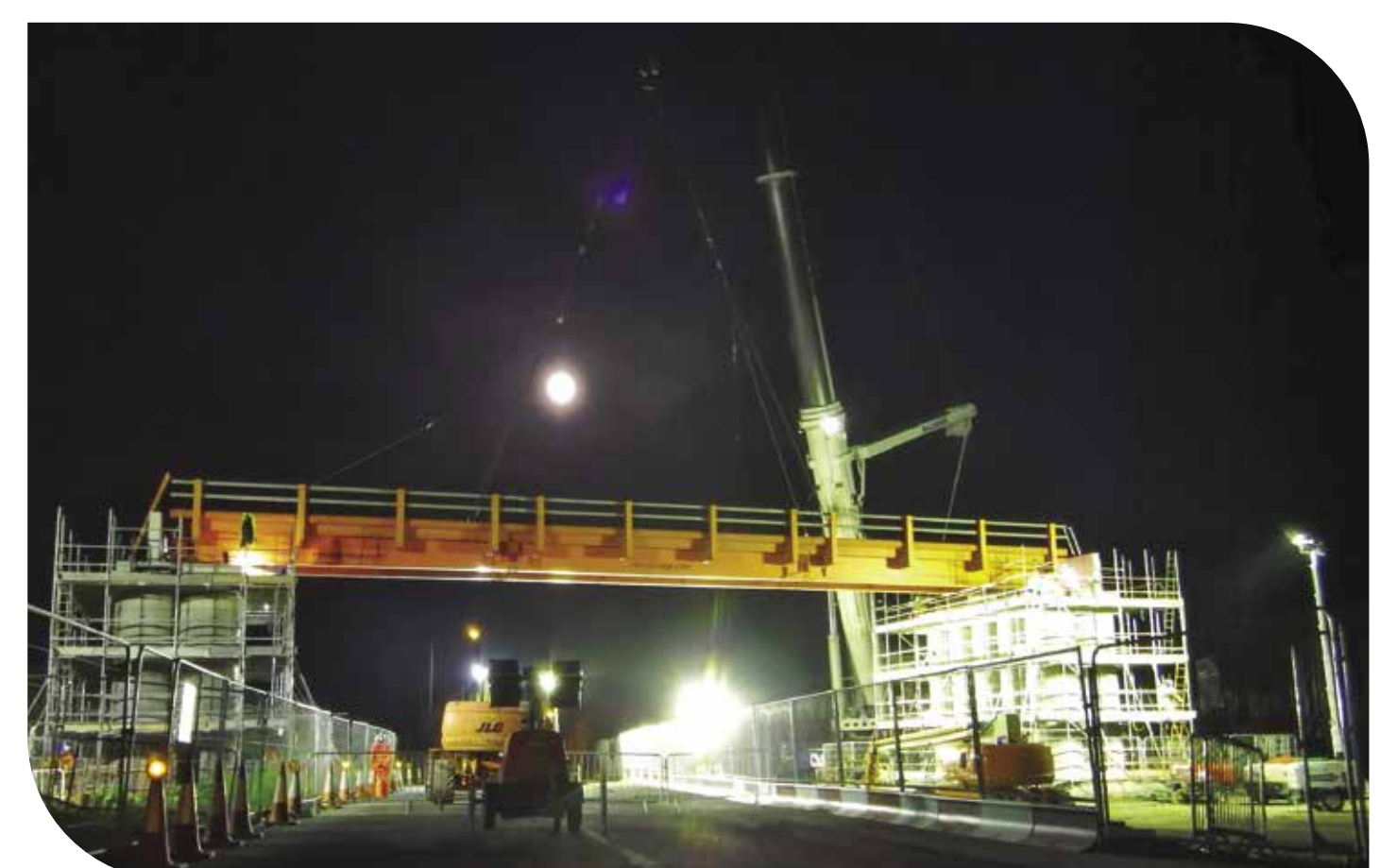
WE WILL KEEP YOU INFORMED...

About:

- our progress
- forthcoming works (especially any out of hour works)
- large deliveries
- changes to our traffic management.

By:

- producing regular newsletters
- utilising a Twitter Feed to provide more timely updates of traffic management and works
- maintaining a project website
- hosting a manned visitors centre where you can come and chat to us about our work, ask questions or raise any concerns you may have
- having dedicated Community Relations Managers who the community can contact on PWDHelpline@costain.com to discuss issues related to the scheme at any time. We will commit to respond to any issues raised to us within 2 working days
- working with community groups to keep you informed and discuss potential impacts
- making sure we inform affected residents and businesses of any road closures, out of hours works or other disruption that will directly affect them
- providing regular updates in the local media.



Keeping you updated

Website: www.lancashire.gov.uk/pwd
Email: citydeal@lancashire.gov.uk
Follow us on @lancscitydeal





DURING CONSTRUCTION CONTINUED



COSTAIN HAVE NOW BECOME PARTNERS IN THE CONSIDERATE CONSTRUCTORS SCHEME

The scheme commits contractors to be considerate and good neighbours, as well as clean, respectful, safe, environmentally friendly, responsible and accountable.

Our sites are independently audited to ensure that we comply with their codes. While the industry average score for 2014 was 35.3, Costain sites averaged 40.6 out of 50. Our Heysham to M6 Link score in our November audit was 45 and scores have consistently exceeded 40.

WILL GET YOU INVOLVED...

EDUCATION

For schools:

- Safety and education days in schools
- Personal safety sessions; both around construction sites and general.

For students:

- Engineer led sessions, including bridge building days
- Media projects, safety campaigns and project progress videos
- Mock interviews and CV preparation
- Work experience placements and taster sessions
- Supported projects in areas such as environment, sustainability, business and finance.

We welcome contact from teachers and other education providers with suggestions about how we can support planned projects in any way.

For adults:

- NVQ Level 2 training for staff
- Apprenticeships, we will seek to take on a number of apprentices living locally to the scheme
- Support the Institution of Civil Engineers (ICE) with development days, site tours and presentations
- University/College lectures or assisted projects
- School and College briefings about the construction industry and careers within it.



EMPLOYMENT

We will work with...

- Preston JobCentre Plus, the county council's WorkStart and Future Horizon's team to help bring the unemployed back into the workforce
- Higher education facilities (UCLAN, Preston and Cardinal Newman Colleges) to provide training and qualifications for our staff
- Established business clubs to provide coaching and skilled support
- the North & Western Lancashire Chamber of Commerce and local businesses and support them to enter our supply chain through Meet the Buyer events.

Employment of local people

We will work with Preston JobCentre Plus and local employment agencies to target unemployed people in the community and help them get into work. We will focus on the long term unemployed, ex-offenders, young people, over 50s, and other disadvantaged people upholding equality, diversity and inclusion principles. Our Community Relations Managers will ensure that project employment opportunities are published on a PWDR project website, procurement portal and via local media.

Skills legacy

On major highway schemes such as this, Costain is committed to gaining accreditation as a CITB registered National Skills Academy for Construction. The National Skills Academy for Construction is a project-based training concept, tailored to help clients and contractors to get the right skills where they need them. We will offer on-site training and day release to attend vocational courses at local colleges with the objective of ensuring that the local people we employ achieve a qualification to at least NVQ2 level. We also strive to promote careers in engineering and construction working directly with local schools, colleges and universities (in the case of PWDR UCLAN, Preston, Cardinal Newman) providing site visits, work experience and 'taster days'. Through our STEM Ambassadors we will increase the capability of local schools and colleges in delivering STEM training, supported by our existing relationships with STEMNET, the Construction Youth Trust and The Prince's Trust.

WE DO WHAT WE SAY:

"Costain have embraced (delivering economic benefits) through their great work with the Princes Trust and the local employment partnership as well as helping to set the industry up for future growth through a high volume of training delivered as part of their 'National Skills Academy for Construction' status."
Andrew Watson, Project Manager, Highways England

"As a Company Costain is an exemplar of how construction can be used effectively as a context for learning for their support on a wide range of related activities."
Andrea Meyrick, Chief Executive, Education Business Partnership

"The Chamber is working with Costain to maximise opportunities for local businesses, and has an important role to play in supporting local companies to become procurement ready. We are working with Costain to reduce the barriers which stop small suppliers being able to tender for work. This partnership approach demonstrates a pro-active commitment by all concerned to deliver this project in a way which benefits the local economy and community."
Vicky Lofthouse, Chief Executive Officer, Lancaster Chamber of Commerce

"Costain has been very supportive right from the first meeting to discuss the Employment route project. Costain has created a structured training programme for each of our participants."
Michael Woods, Job Centre

Keeping you updated

Website: www.lancashire.gov.uk/pwd
Email: citydeal@lancashire.gov.uk
Follow us on @lancscitydeal

