

**Lancashire**  
County Council

# Defining a new relationship with schools

## Embedding System Leadership

**Presentation**

Sarah Callaghan – Director of Education and Skills  
Paul Duckworth – Acting Head of Service (Education Improvement)

[www.lancashire.gov.uk](http://www.lancashire.gov.uk)

**Lancashire**  
County Council

**Lancashire**  
County Council

# Our vision

**Children, young people and their families are safe, healthy  
and achieve their full potential.**

*Lancashire Children, Young People and Families Partnership Vision*

[www.lancashire.gov.uk](http://www.lancashire.gov.uk)

**Lancashire**  
County Council

## A cross phase partnership approach

### AIMS

- Provide the best possible outcomes for all Lancashire's children and young people through a system led approach which shares best practice and tackles underperformance.
- Ensure that Early Years, Primary, Secondary, Short-Stay and Special Schools are at the heart of a system-led approach to supporting children, young people and families.
- Include stakeholders from all school phases and all school sectors to include maintained schools, academies, MATS, Teaching Schools, Faith Schools, and maintained nurseries.
- A clear and transparent flow of data and information which promotes two-way dialogue to local communities through cross phase locality networks in order to improve outcomes for children and families.
- Develop a collaborative approach to system leadership with LA support and facilitation.
- Create a Lancashire wide Education Partnership Board chaired by the Executive Director for Education underpinned by locality boards.

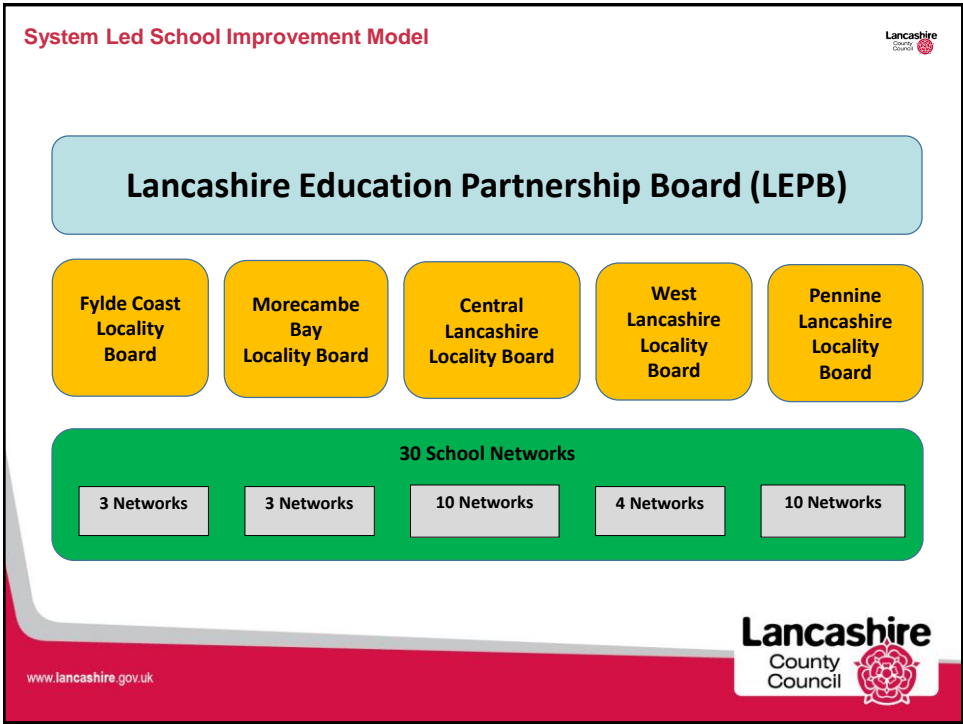
[www.lancashire.gov.uk](http://www.lancashire.gov.uk)



## The system led model in Lancashire

[www.lancashire.gov.uk](http://www.lancashire.gov.uk)



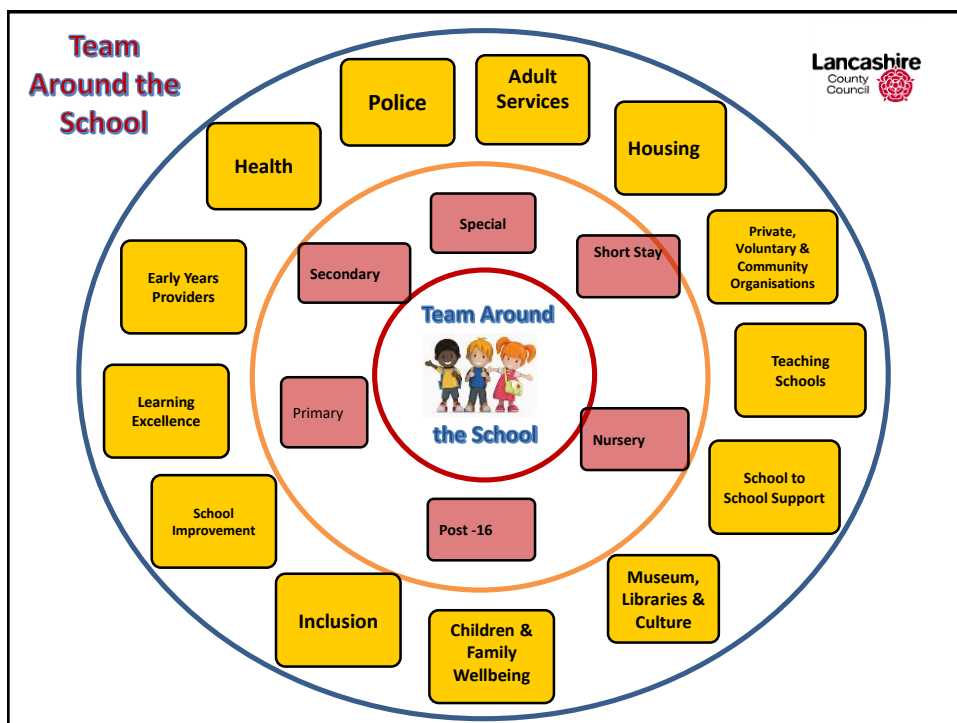


- Lancashire Education Partnership Board (LEPB)**
- Provides information in the form of locality network profiles
  - Confirms the Locality Board priorities and allocates the appropriate resource to meet the action plan
  - Monitors the implementation of the action plans through a regular reporting schedule
  - Assesses the impact of the activity, adjusts allocations and facilitates the sharing of good practice
- [www.lancashire.gov.uk](http://www.lancashire.gov.uk)
- Lancashire County Council**

## Locality Boards

- Receive locality profiles with summary of strengths and issues
- Agree local priorities
- Identify strengths and potential resource
- Produce a locality action plan(s) and associated resource plan for sign off at LEPB
- Implement the action plan and monitor activity
- Report on impact to LEPB

[www.lancashire.gov.uk](http://www.lancashire.gov.uk)



## Additional resource

- DfE programmes
- Education Endowment Foundation
- Research Schools
- English Hub
- Maths Hub
- Computing Hub
- BBL regional resource
- Universities

[www.lancashire.gov.uk](http://www.lancashire.gov.uk)



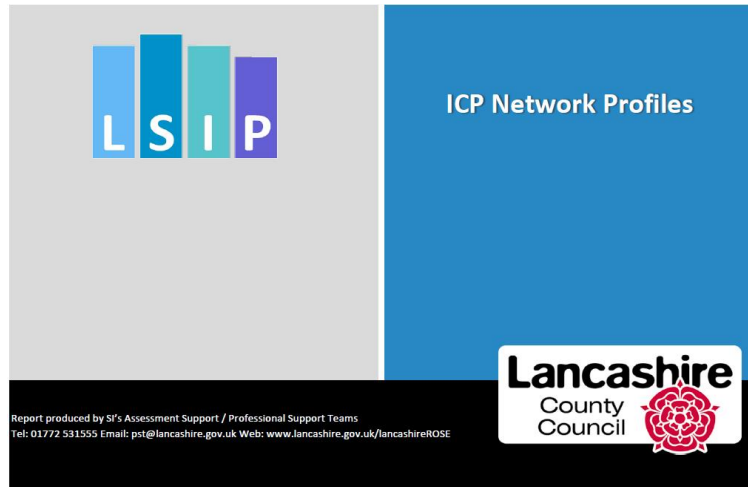
## Membership Outline for LEPB

- Edwina Grant OBE, Executive Director of Education and Childrens' Services (Chair)
- Sarah Callaghan, Director of Education and Skills
- Chairs of Locality Boards
- Headteacher Representatives (Nursery Federation, PHIL, LASSH, LSSHTA, Post-16)
- Academy Trust Representatives
- Teaching School Council Representation
- Diocesan Representation
- Governors Representative
- RSC's Office
- Ofsted by invitation
- Private, voluntary independent nursery provision
- Post 16 sector representative
- School's capital asset team - Schools' Finance - Schools' HR

[www.lancashire.gov.uk](http://www.lancashire.gov.uk)



## Example of locality profile



## Task 1

- What elements of the profiles are **most useful** in providing the information to support the agreement of priorities and action plans in localities?
- Anything **missing**?

## Task 2

Copies of the aims and principles of this model are on your table.

1. Make any additions/amendments.
2. Choose your top 3 aims and top 3 principles.
3. What would be the behaviours you would see if your top 3 were implemented successfully?

[www.lancashire.gov.uk](http://www.lancashire.gov.uk)



## Next Steps

- A steering group supports the development of this model in line with the expected timeframe.
- The locality board for the East is developed as first phase of implementation- operational from April 2020
- The LEPB is established in summer term 2020
- The remaining Locality Boards are established in the summer term and the model is fully operational from September 2020

[www.lancashire.gov.uk](http://www.lancashire.gov.uk)



Thank you for your engagement in today's session and for your future involvement in this system led approach.

With your support and collaboration we firmly believe we can deliver better outcomes for the children and families in Lancashire.