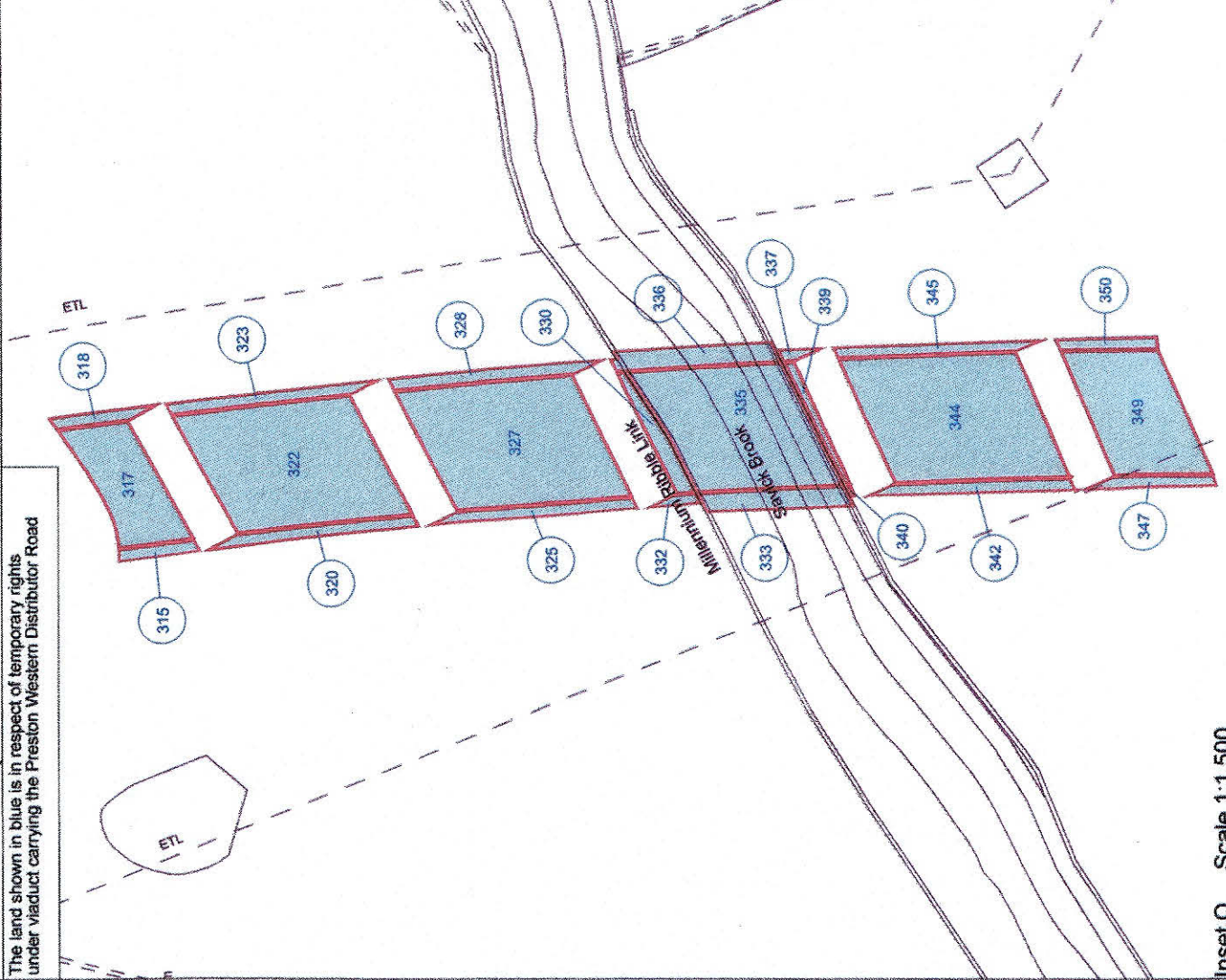
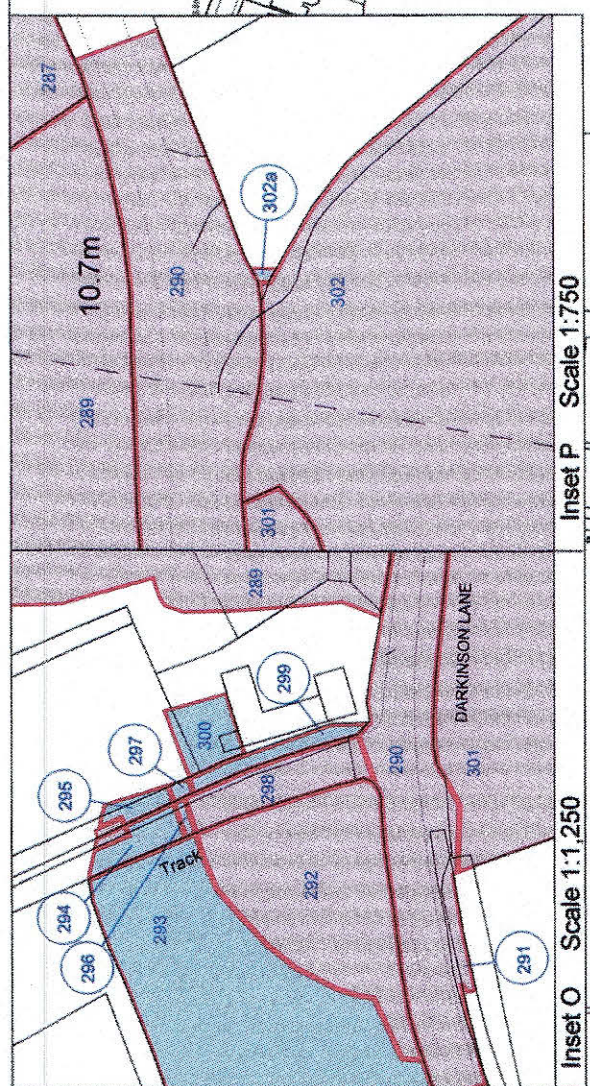
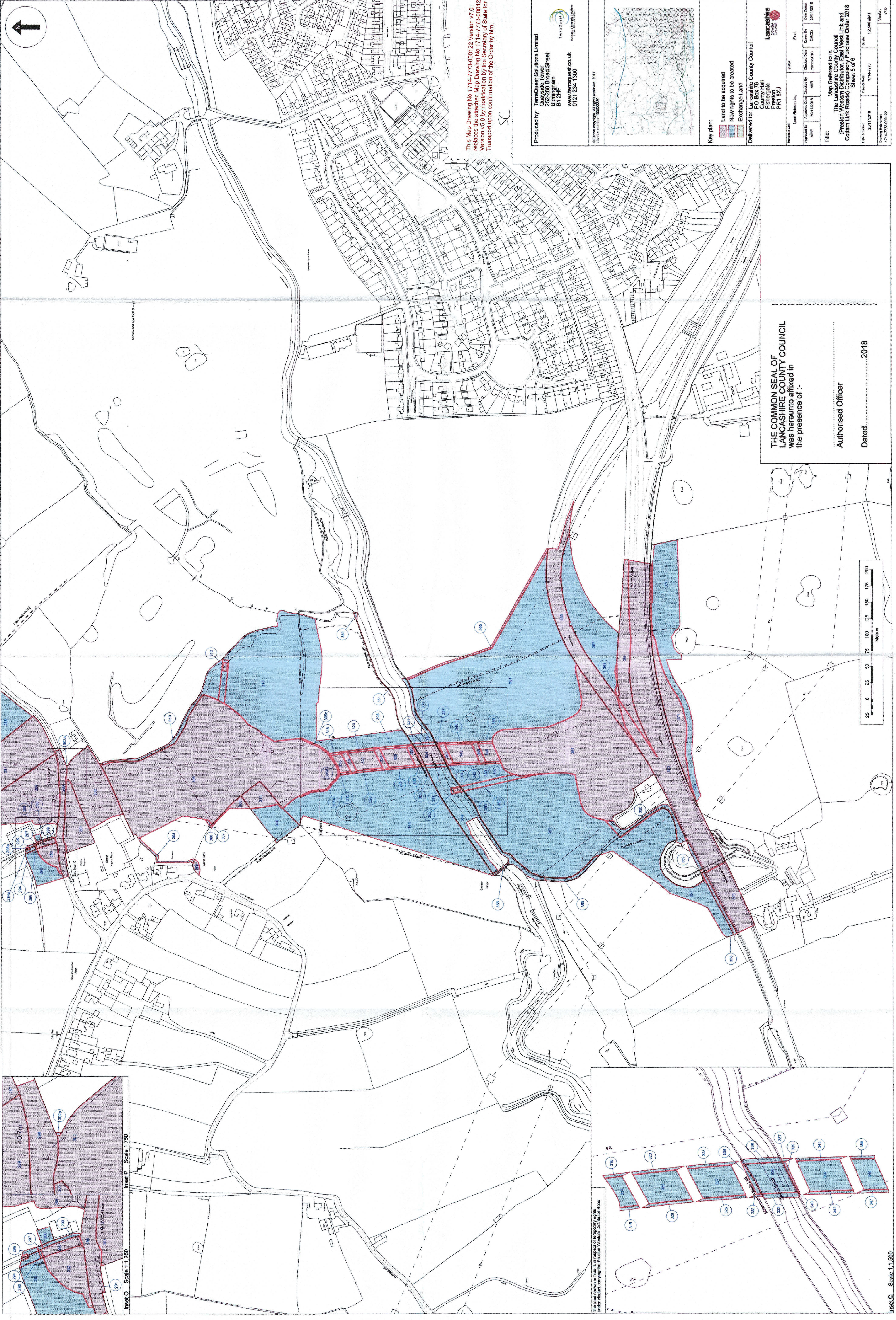


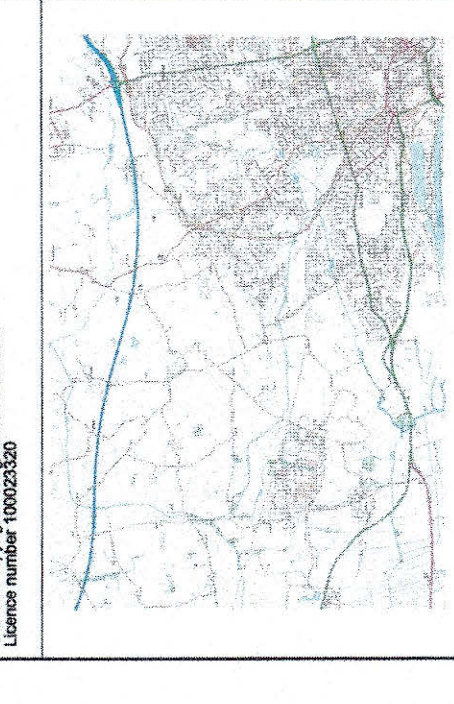
Map Referred to in The Lancashire County Council (Preston Western Distributor, East West Link and Cottam Link Roads) Compulsory Purchase Order 2018

Continues on Sheet 4



This Map Drawing No 1714-7773-000122 Version v7.0 replaces the attached Map Drawing No 1714-7773-000122 version v5.0 by modification by the Secretary of State for Transport upon confirmation of the Order by him.

Produced by:
TerraQuest Solutions Limited
0252 280 Broad Street
Birmingham
B1 2HF
www.terraquest.co.uk
0121 234 1300

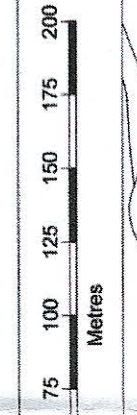


Key plan:
 Land to be acquired
 New rights to be created
 Exchange Land

Delivered to: Lancashire County Council
 PO Box 78
 Preston
 PR1 8XJ

Business List		Status		Final	
Approved By	Approved Date	Checked By	Checked Date	Drawn By	Drawn Date
MRE	2011/02/18	AJR	2011/02/18	CMCD	2011/02/18
Title: Map Referred to in The Lancashire County Council (Preston Western Distributor, East West Link and Cottam Link Roads) Compulsory Purchase Order 2018 Sheet 3 of 6					
Date of Issue	Project Code	Scale	Version		
2011/02/18	1714-7773	1:2,500 (B1)	v7.0		
Drawing Reference: 1714-7773-000122					

THE COMMON SEAL OF
 LANCASHIRE COUNTY COUNCIL
 was hereto affixed in
 the presence of :-
 Authorised Officer
 Dated:2018



Inset Q: Scale 1:1,500