



# Access Statement for Gawthorpe Hall

This access statement does not contain personal opinions as to our suitability for those with access needs but aims to accurately describe the facilities and services that we offer all our visitors.



## Introduction

Gawthorpe Hall is a historic house located at the end of a long driveway. It is a tower shaped building with historic rooms open to the public spread across 3 floors (4 floors when the basement is open). There is no lift and a lot of stairs; we are happy to discuss access needs with visitors.

Gawthorpe Hall is owned by the National Trust and operated in partnership by Lancashire County Council Museum Service.

**We look forward to welcoming you. If you have any queries or require any assistance please phone 01282 771004 or email [gawthorpehall@lancashire.gov.uk](mailto:gawthorpehall@lancashire.gov.uk)**

## Car Parking and Arrival

Entrance drive – driveway is 0.8 miles long, tarmac surface with 7 speedbumps and grass at the sides.

Car park (free) – at the top of the driveway on the left, has a firm gravel surface and 4 marked bays for Access parking, 70 metres walk to the Hall.



There is a Drop-off Point beyond the car park by the wooden gate, from here it is a flat 50 metre walk to the Hall on a tarmac surface. If a passenger is being dropped off the car can then be parked on the main car park. If it is the driver who is disabled then the vehicle can be parked at the side of the gate, as long as the access (required for emergency vehicles) is not blocked.





Footpaths – around the site there are a mixture of flagstones, tarmac and firm gravel surfaces, all footpaths may be slushy or slippery in wet weather.

From the car park - a flat gravel surfaced path leads to brown gates, through the gates follow a flagstone path to toilets. Distance 45 metres.

Alternatively use tarmacked main drive to gate, beyond the gate a flat gravel path leads to the Hall. Distance 70 metres.

Bus – the nearest bus stop is a couple of minutes' walk from the entrance gate on the main Burnley Road. Bus numbers M1, M2, M3 and 152 come from Burnley bus station.

Train – nearest railway station is Rosegrove 2.1 miles away, but it is only accessible by 34 steps and there is no taxi rank outside.

Burnley Manchester Road is 2.9 miles away with a taxi shop nearby. Both platforms are accessible via ramps. The station is generally manned during daytime hours. There is an accessible toilet, but you need your own radar key and it is only available when the booking office is open.

Burnley Barracks railway station is 2.2 miles away. Please note this is a request stop, so you will have to inform the guard if you wish to alight here. It has step free access via a 50m ramp with handrail. There is no taxi rank. However, there is a bus stop on the opposite side of the main road where you can board the 152, M1 and M2 to the driveway to Gawthorpe Hall. The bus stop can be accessed via an underpass just to the left of the station exit that has step free access or by turning right from the station exit and going 80m to a pedestrian crossing then doubling back.

Hapton railway station is 2.2 miles away. Please note this is a request stop, so you will have to inform the guard if you wish to alight here. It has step free access via a fairly steep 40m ramp with handrail. There is no taxi rank.

## Main Entrance, Reception and Ticketing Area

4 steps up to front door (no ramp, no hand rail). Front door 115cm, always open



Flat tiled inner porch, seat with padded cushion inside door.

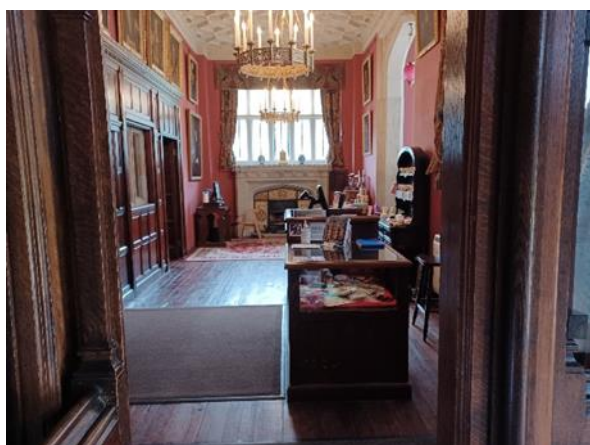


Wooden screen with open door 72cm wide leads into Entrance Hall (or 2 stone steps up lead to bottom of main staircase, no handrail).



Entrance Hall (Ground Floor) –

Visitor reception desk two lower areas of 90cm, one central higher area 110cm.



Lighting is electric light bulbs and natural light.

Loop system installed at the desk. Virtual tour on a touchscreen.

Large print & braille guidebooks available. Assistance dogs are welcome. Carers receive complimentary (free) admission.

One seat, with armrests.

There is no separate shop, guidebooks and other souvenirs for sale here in small retail area.

Flat wooden floor leads through a doorway 87cm into rest of the Hall.

Manual wheelchair available – can be used to collect/drop off from car park and on ground floor rooms of Hall only. (Note – there are steps between some ground floor rooms, see below).

Wheelchairs cannot be used on the upper rooms of the Hall as there is no way of quickly evacuating wheelchair users during a fire alarm. The second evacuation staircase is spiral and not suitable for a wheelchair and there is no fire safe refuge point within the first or second floors.

Motorised wheelchairs – are not suitable in the Hall due to the number of steps and doorways are too narrow for them to fit through.

There are no public toilets in the Hall; these are located in the courtyard (see below).

## House

Lighting throughout the House is electric light bulbs and natural light from the windows - some rooms have reduced light levels to protect the items on display.

### Ground Floor Dining Room –

Flat, wooden and carpeted floor, dias on a single low step up at far end of room. There are benches round the walls and 1 chair.

2 steps up lead out through doorway 88cm wide to flat tiled area at bottom of stairs.

### Ground Floor Drawing Room & bottom of stairs –

Flat wooden and tiled floors, mixture of electric bulbs and natural lighting.

### Main staircase



Stone staircase with wooden handrail runs from ground floor to second floor, total of 42 steps with 6 smaller landings between floors. Lighting is natural and from electric light bulbs.

### First Floor

Floors are wooden and 1 room has a carpet.

There is a short corridor with 2 shallow steps leading to the first room.

Decreased lighting due to delicate textiles on display in cases in some rooms.

3 steps down through a narrowing doorway 69cm wide from Room 2 to Room 3.

Seating available in Rooms 1, 3, 5 & Family Room. 1 step down from Room 5 back to main staircase.

### Second Floor

Floors are wooden and 2 rooms have carpets.

Seating available in The Old Nurseries and Long Gallery.

3 steps down and 2 steps up through doorway 80cm wide from Servant's Corridor into Long Gallery; alternative route with only 1 step up into Long Gallery from main staircase landing.

### Leaving the Hall -

Exit the house is back down the main stone staircase (42 steps in total).

### Spiral staircase and kitchen (open occasionally)

From Long Gallery go down 65 steps on spiral staircase to basement; electric bulb and natural lighting.

Kitchen flat laminated floor, electric bulb and natural lighting.

Exit on flat, laminated corridor with gradual slope and final doorway 82cm wide, on to flat flagstone path leading to the toilets.

## **Routes to Public Toilets from the Hall**

From the Hall there are 3 routes to the courtyard where the toilets are.

1. 25 metres from Hall, a stone staircase with handrail of 14 steps, turn left and follow flat stone flagged path to toilets. Flagstones can be slippery in wet weather.
2. 40 metres from Hall, through a black metal gate and down 4 stone steps. Along flat flagstones by side of building then down 3 more stone steps. Turn left and follow stone flagged flat surface to toilets. Flagstones can be slippery in wet weather.
3. Flat route, but longer 117 metres from the Hall. Walk along flat firm gravel path from Hall to the wooden gate, go past the gate and continue on flat tarmac path, follow that down a gentle slope to the right through large wooden





brown gates. Through the gates the surface is cobbles with a flagstone path to the side, the toilets can be seen in front.

## Public Toilets

Public toilets are located in a converted barn; the entrance is level with outside. The floor is tiled and can be slippery in wet weather.



One accessible toilet is at the end of a flat tiled corridor, doorway 110cm opens outwards. Cubicle measures 122cm wide and 240cm deep.

Toilet 41cm high, sink 74cm high with lever taps.

Horizontal and vertical rails on the right and left of toilet and in front of wash basin.

Well-lit with overhead lighting.

Emergency pull cord.

## Catering

There is no café provision at Gawthorpe Hall. On busy days we sometimes have a coffee van operating in the grounds, please phone to check. There are places to eat and buy food in nearby Padiham town centre.

## Grounds and Gardens

Front garden – firm gravel paths around the lawn at front of Hall, these can be slushy in wet weather. Large stone staircase 19 steps to top of grass banking, no handrail.

Back garden – flat gravel paths round sides of building, these can be slushy in wet weather. 11 steps in 2 flights go down to flat paths round parterre, no handrail.





Seating – there are two wooden benches on raised areas at each side of main lawn, up a set of 7 steps and along short rough surfaced path.

Picnic benches – available in the courtyard area, 3 near the toilet block are on flat ground accessed across cobbles and flagstones. 3 in the picnic area are accessed up 3 shallow stone steps and across grass.

#### Wider grounds –

Footpaths throughout the wider woodland and to the pond are rough unsurfaced paths, some have gradual slopes, and others are flat.

There is a second set of 17 stone steps, no handrail that leads to a rough unsurfaced gradually sloping path to the pond.

## Additional Information

1. In the event of an emergency staff on duty ensure that their duty area is clear. The fire alarm sounds throughout the Hall upon activation. Museum staff and volunteers are trained for internal evacuation procedures.
2. Signage used can differ throughout the museum. In house signage is white background with black text. Large font is used. Official signage, such as H&S notices are bought from official suppliers and meet UK regulation requirements.
3. Gawthorpe Hall is a Grade 1 listed building, this greatly restricts any physical alterations that can be made to the building.

## Examples of flooring

There are tiled, wooden and stone surfaces inside the hall. Some of these may be slightly uneven or on a slope.



## Doorways

Some of the doorways are quite narrow.



## Contact Information:

Address  
Sat nav  
postcode: Gawthorpe Hall, Padiham, Burnley, BB12 8UA  
BB12 8SD

Telephone: 01282 771004

Fax: none

Email: [gawthorpehall@lancashire.gov.uk](mailto:gawthorpehall@lancashire.gov.uk)

Website: [www.lancashire.gov.uk/museums](http://www.lancashire.gov.uk/museums)

Grid  
Reference: SD 380700 434070

Hours Of  
Operation: April to October 12pm – 5pm (last entry 4.15pm)  
Wednesday to Sunday and Bank Holidays

Local Public  
Transport:

### **Burnley Manchester Road railway station**

Ramped access to platform, ticket machine. Manned during daytime hours. Own radar key needed to access toilet facilities.

### **Burnley bus station**

Taxi rank outside, toilets, kiosk, pay phone & Information desk.

