



# Lancashire Sexual Health Profile

Christine Graham & Farha Abbas

Public Health Knowledge Management & Intelligence

October 2013

[www.lancashire.gov.uk](http://www.lancashire.gov.uk)

# Contents

1.	<b>Summary</b> .....	2
2	<b>Teenage pregnancy</b> .....	4
3	<b>Under 18 abortion</b> .....	9
4	<b>Under 16 conceptions</b> .....	13
5	<b>Live births</b> .....	15
6	<b>Abortions</b> .....	17
7	<b>Sexual Health Balanced Scorecard by locality</b> .....	20

The data within this brief report, reflects the easily accessible data for sexual health and as such is heavily weighted towards conception data. By intent or omission this data does not represent the focus of attention for sexual health. The strategy and action plan for sexual health fully acknowledges that Sexual health needs vary according to factors such as age, gender, sexuality and ethnicity, and some groups are particularly at risk of poor sexual health. We are undertaking a JSNA for sexual health, due completion in August 2014 and this will provide a comprehensive view of sexual health needs across Lancashire.

# 1. Summary

This report provides a brief high level overview of sexual health in Lancashire.

- In Burnley, Hyndburn, Pendle, Preston and Rossendale the <18 conception rate is significantly higher than the England rate (09-11)
- In East locality, Burnley has the highest rate of <18 conceptions in 2011
- In Central locality, Preston has the highest rate of under 18 conceptions in 2011
- In North locality, Wyre has the highest rate of under 18 conceptions in 2011
- Between 2000 and 2011, the 3 highest percentage of reductions in <18 conceptions were in Lancaster, Hyndburn and Rossendale, respectively
- Within England, Burnley ranks 5th highest for teenage conception rate, therefore, has a higher rank (in England) than all other Lancashire districts
- Under 18 abortion rate is highest in Burnley and 2<sup>nd</sup> highest in Chorley whereas the proportion of <18 conceptions leading to abortion is highest in Chorley and 2<sup>nd</sup> highest in Fylde
- Burnley, Chorley, Fylde, Pendle and West Lancashire have the five highest < 18 abortion rates in Lancashire
- In East locality - the recent 4 years' data show a rise in the proportion of <18 conceptions leading to abortion, in Burnley and Hyndburn
- In Central locality – the recent 4 years' data show a rise in the proportion of <18 conceptions leading to abortion, in Chorley and West Lancashire
- In North locality - the recent 4 years' data show a gradual decline in the proportion of <18 conceptions leading to abortion, in Wyre
- In North locality - the recent 2 years' show an increase in the proportion of <18 conceptions leading to abortion, in Fylde.
- There is a strong correlation between local authority deprivation and <18 conception rate
- In Lancashire 12, the under 16 conception rate remains highest in Burnley (significantly higher than England) and lowest in Ribble Valley.
- In Lancashire, the proportion of under 16 conceptions leading to abortion remains highest in Pendle
- The proportion of under 16 conceptions leading to abortion is 2<sup>nd</sup> highest in South Ribble and 3<sup>rd</sup> highest in Chorley and lowest in Wyre
- In Burnley and Preston, the rate of live births in mothers under 18 years is significantly higher than the England rate
- The rate of abortion in under 18 year olds is highest in West Lancashire CCG and 2<sup>nd</sup> highest in East Lancashire CCG.
- The number of abortions in under 18s is highest in East Lancashire CCG and 2<sup>nd</sup> highest in Chorley and South Ribble CCG.
- Within Lancashire CCGs, the total number of legal abortions is highest in East Lancashire CCG and 2<sup>nd</sup> highest in Greater Preston CCG

***East locality sexual health balanced scorecard:***

- In Burnley the rate of acute STI diagnoses is significantly higher than the England rate and in Pendle, Rossendale and Ribble Valley it is significantly lower than the England rate
- In all East locality districts, the percentage of 15-24 year olds tested for chlamydia outside GUM clinics is significantly worse than the England rate; lowest in Rossendale
- In Pendle and Rossendale the rate of age 15-24 years chlamydia diagnoses in all settings is significantly worse than the England rate
- In Burnley, the rate of Pelvic Inflammatory Disease related admissions (age 15-44) is significantly higher than the England rate
- In all East locality districts, HIV test uptake in GUM clinics is significantly worse than the England rate; highest in Ribble Valley
- In Burnley, Hyndburn and Pendle, the percentage achieving 5 GCSE A-C grades (inc English & Maths) is significantly worse than England (2010/2011)

***Central locality sexual health balanced scorecard:***

- In Preston the rate of acute STI diagnoses is significantly higher than the England rate and in Chorley and West Lancashire it is significantly lower than the England rate
- In West Lancashire, the percentage of 15-24 year olds tested for chlamydia outside GUM clinics is significantly worse than England; in the other three Central districts it is better than England
- In West Lancashire, the rate of age 15-24 years chlamydia diagnoses in all settings is significantly worse than England; in the other three Central districts it is better than England
- In West Lancashire, the rate of Pelvic Inflammatory Disease related admissions (age 15-44) is significantly higher than the England rate and in Preston it is significantly better than the England
- In West Lancashire, HIV test uptake in GUM clinics is significantly better than England
- In Preston, the rate of police recorded rape of females is worse than England
- Apart from West Lancashire, in the other three Central locality districts, the percentage achieving 5 GCSE A-C grades (inc. English & Maths) is significantly better than England (2010/2011)

***North locality sexual health balanced scorecard:***

- In Fylde and Wyre the rate of acute STI diagnoses is significantly better than the England rate
- In Lancaster, the percentage of 15-24 year olds tested for chlamydia outside GUM clinics is significantly worse than England
- In Wyre, the rate of age 15-24 years chlamydia diagnoses in all settings is significantly better than England
- In Lancaster and Wyre, the rate of Pelvic Inflammatory Disease related admissions (age 15-44) is significantly lower than the England rate
- In all North locality districts, gonorrhoea diagnoses in GUM clinics is significantly lower than England
- In Lancaster and Wyre, HIV test uptake in GUM clinics is significantly worse than England
- In Fylde and Lancaster, the percentage achieving 5 GCSE A-C grades (inc. English & Maths) is significantly better than England (2010/2011)

## 2 Teenage pregnancy

The most current (2009-2011) figures show that in Lancashire the rate of teenage (<18 years) conceptions is significantly higher than the England rate (figure 1). In Lancashire, in Burnley, Hyndburn, Pendle, Preston and Rossendale the teenage conception rate is significantly higher than the England rate.

**Figure 1: <18 years Conceptions: Crude rate per 1,000 female population aged 15-17 (09-11).** Red=significantly higher than England, green=significantly lower than England, Orange=no significant difference from England

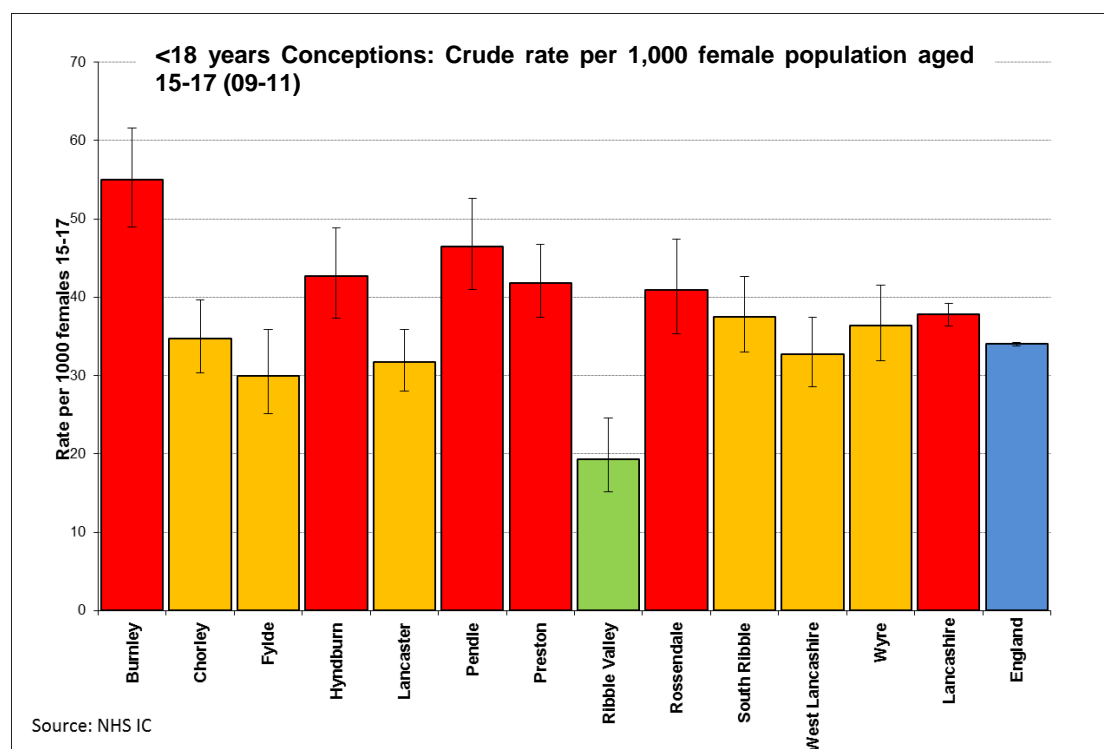
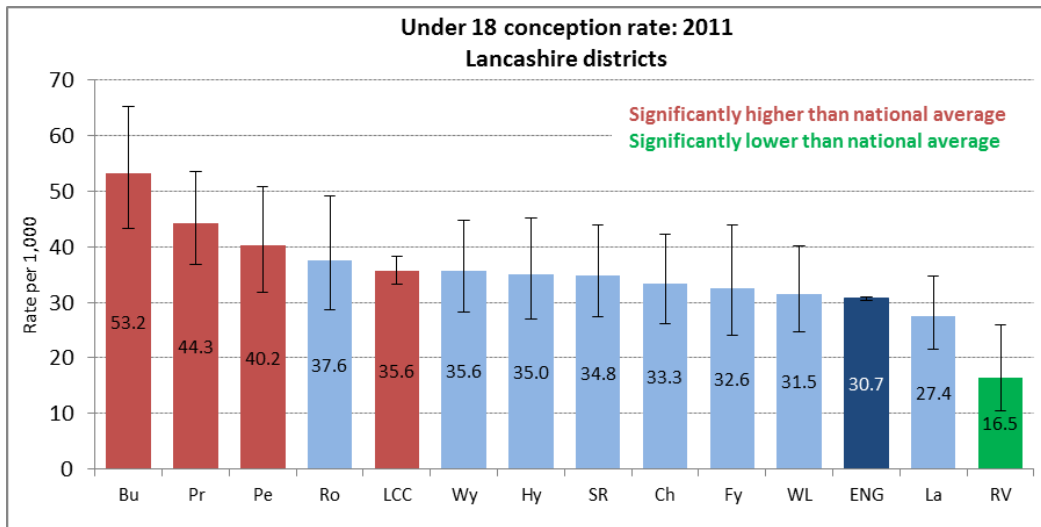


Figure 2 shows the under 18 teenage conception rate for 2011. According to the 2011 figures, in Burnley, Pendle, Preston and Lancashire under 18 conception rate is significantly higher than England rate. In Ribble valley the under 18 conception rate is significantly lower than England rate

**Figure 2: Under 18 teenage conception rate, 2011**

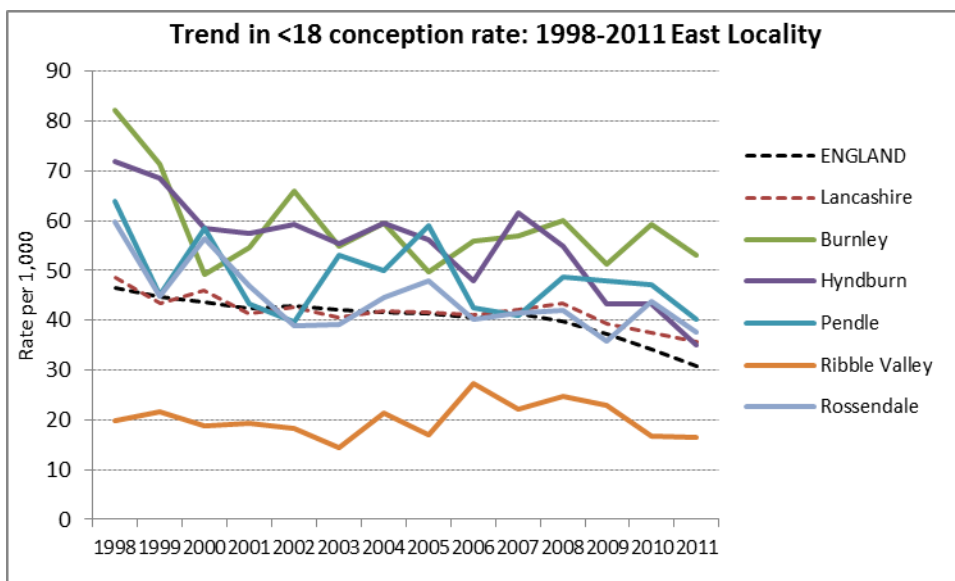


Source: NHS IC

Figures 3 to 5 show the trend in under 18 conceptions, 1998 to 2011, by locality.

In East locality, between 1998 and 2011, the under 18 teenage conception rate has fluctuated, showing an overall reduction. Between 2010 and 2011, all East locality districts experienced a reduction in under 18 conception rate; this reduction was larger in Burnley, Hyndburn and Pendle than in Ribble Valley's rate (figure 3). Over the years, either Burnley or Hyndburn have generally had the highest under 18 conception rates in East locality and with Hyndburn experiencing a gradual reduction, from 2008 onwards, Burnley has had the highest rate in East locality.

**Figure 3: Trend in under 18 conception rate in East locality**

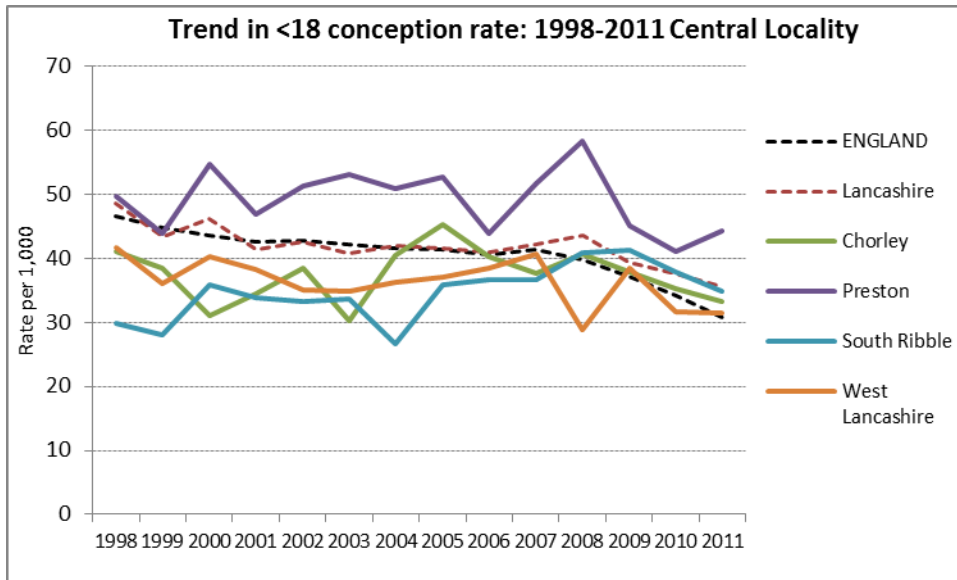


Source: Office for National Statistics

In Central locality, between 1998 and 2011, the under 18 teenage conception rate has fluctuated, showing an overall reduction in Chorley, Preston and West Lancashire and an

increase in South Ribble. The latest 2011 data shows a reduction, compared to 2010, in the under 18 teenage conception rate in Chorley and South Ribble and no considerable change in Ribble Valley's rate; Preston experienced an increase in under 18 teenage conception rate between 2010 and 2011. Over the years Preston remains to have the highest under 18 teenage conception rate in Central locality.

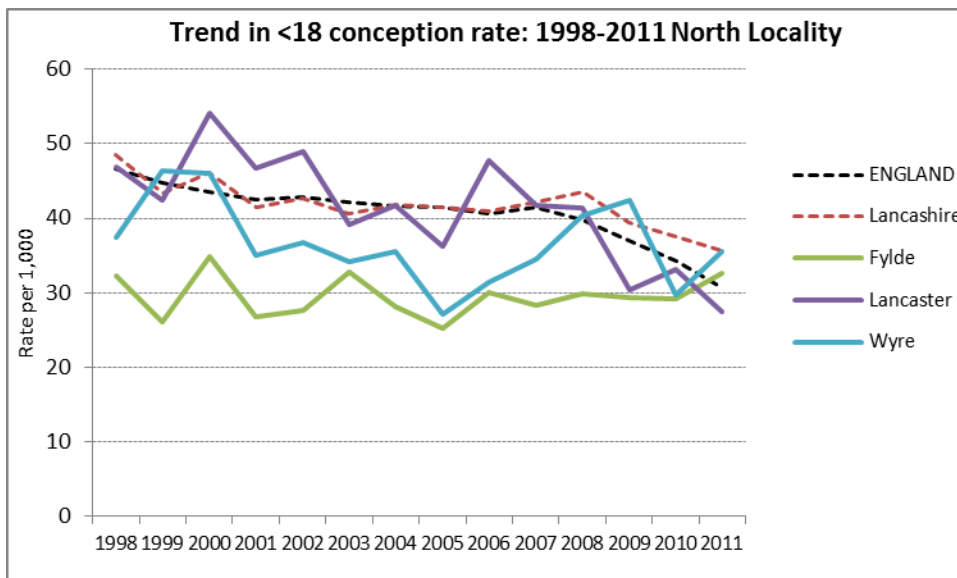
**Figure 4: Trend in under 18 conception rate in Central locality**



Source: Office for National Statistics

In North locality, between 1998 and 2011, the under 18 teenage conception rate has fluctuated, showing an overall reduction in Lancaster and no considerable change in Fylde and Wyre's rate. Over the years, whilst experiencing a gradual decline, Lancaster has remained to have the highest under 18 teenage conception rate in North Locality; however, in 2011 Lancaster's rate has dropped below that of Fylde and Wyre.

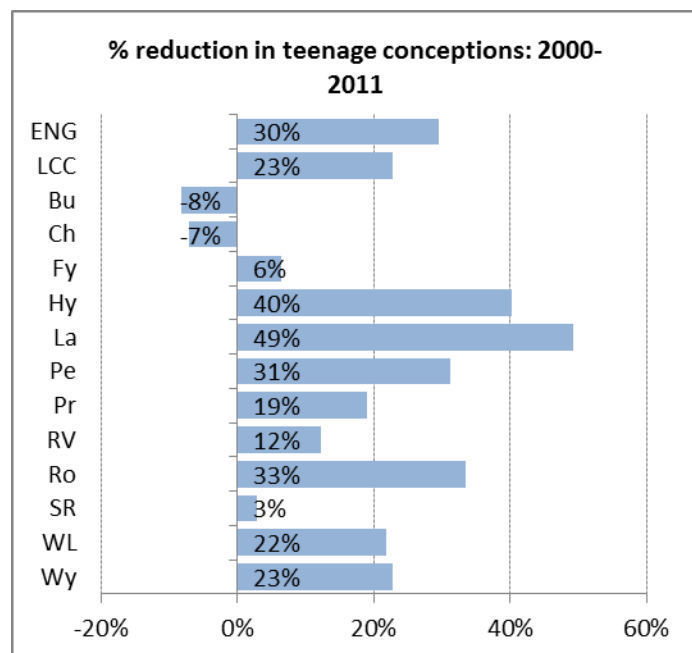
**Figure 5: Trend in under 18 conception rate in North locality**



Source: Office for National Statistics

Figure 6 shows a percentage reduction in the under 18 conception rate, between 2000 and 2011. Between 2000 and 2011, the 3 highest percentage of reductions were in Lancaster, Hyndburn and Rossendale, respectively.

**Figure 6: Percentage reduction in under 18 conception rate, between 2000 and 2011**



Source: Office for National Statistics

Table 1 presents teenage conceptions across Lancashire districts, the rankings, within respective ONS cluster group and England.

The data presented in table 1 show that between 08-10 and 2009-11:

- In 10 Lancashire districts there has been a reduction in teenage conception rate; Preston experienced the greatest reduction in percentage terms.
- Fylde and Rossendale experienced a slight increase in teenage conception rate (table 2).

Within England, Burnley ranks 5<sup>th</sup> highest for teenage conception rate and, therefore, has a higher rank (in England) than all other Lancashire districts (table 5).



**Table 1: <18 conception rate per 1000 15-17 females and rank in ONS cluster group and in England**

Area	08/10	09/11	% change (09/11 and 08/10)	10/11 rank in ONS cluster sub-group <sup>1</sup>	10/11 rank in England <sup>2</sup>	National quintile, 1=lowest 20% nationally
Burnley	56.8	55	-3%	1 (of 14)	5	5
Chorley	37.9	34.7	-8%	8 (out of 39)	122=	3
Fylde	29.5	30	2%	8 (out of 22)	181=	2
Hyndburn	47.2	42.7	-10%	6 (out of 14)	52=	4
Lancaster	35	31.7	-9%	19 (out of 19)	154=	3
Pendle	48	46.5	-3%	4 (out of 14)	35	4
Preston	48.6	41.8	-14%	7 (out of 14)	59	4
Ribble Valley	21.5	19.3	-10%	32= (out of 42)	286=	1
Rossendale	40.5	40.9	1%	16 (out of 28)	65=	4
South Ribble	40	37.5	-6%	3 (out of 39)	98=	3
West Lancashire	32.9	32.7	-1%	4= (out of 20)	143=	3
Wyre	37.6	36.4	-3%	3 (out of 22)	107=	3
<b>Lancashire CC</b>	<b>40.2</b>	<b>37.8</b>	<b>-6%</b>			
<b>England</b>	<b>38.1</b>	<b>34</b>	<b>-11%</b>			

<sup>1</sup> Ranking out of ONS cluster group local authorities in England, when sorted in descending order of teenage conception rate.

<sup>2</sup> Ranking out of 326 local authorities in England, when sorted in descending order of the teenage conception rate.

A ranking of 1 indicates the highest rate of teenage conception rate.

### 3 Under 18 abortion

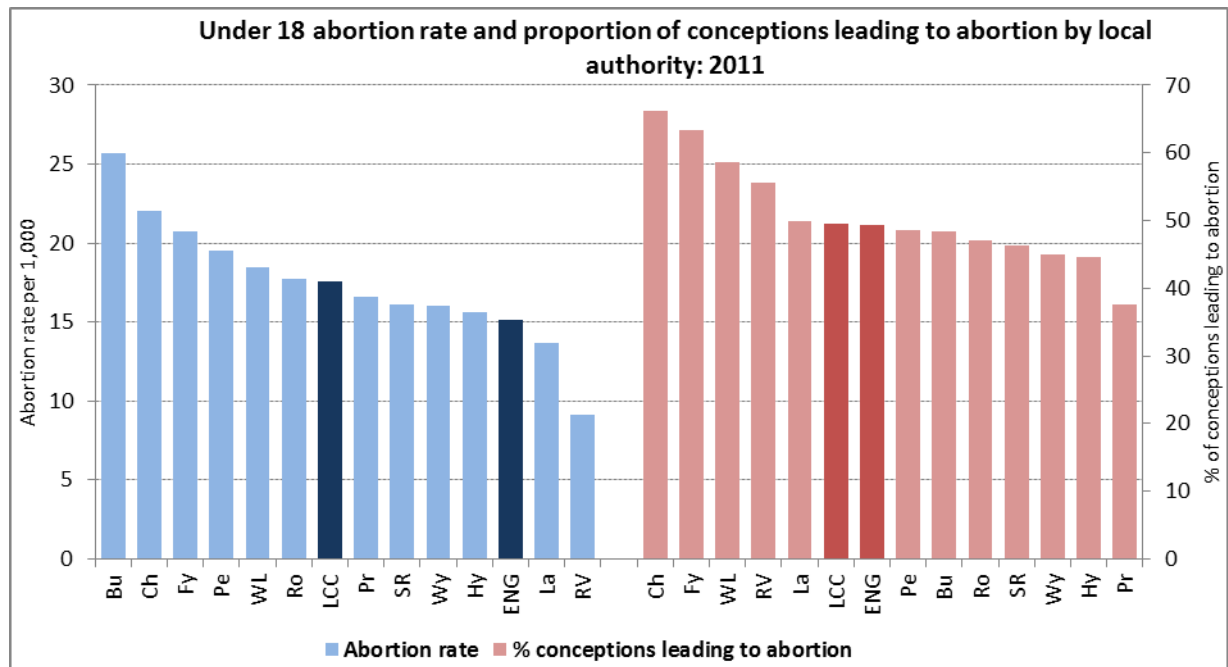
Figure 7 shows the under 18 abortion rate and proportion of <18 conceptions leading to abortion, 2011.

Under 18 abortion rate is highest in Burnley and 2<sup>nd</sup> highest in Chorley whereas the proportion of under 18 conceptions leading to abortion is highest in Chorley and 2<sup>nd</sup> highest in Fylde.

Burnley, Chorley, Fylde, Pendle and West Lancashire have the five highest under 18 abortion rates in Lancashire.

Chorley, Fylde, West Lancashire, Ribble Valley and Lancaster have the five highest proportions of under 18 conceptions leading to abortion, in Lancashire.

**Figure 7: Under 18 abortion rate and proportion of conceptions leading to abortion by local authority: 2011**

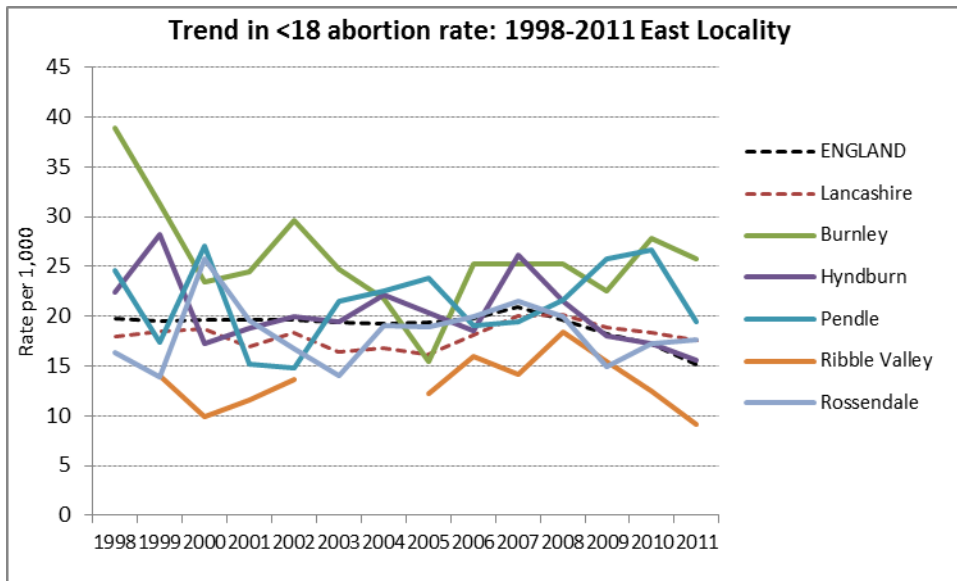


Source: Office for National Statistics

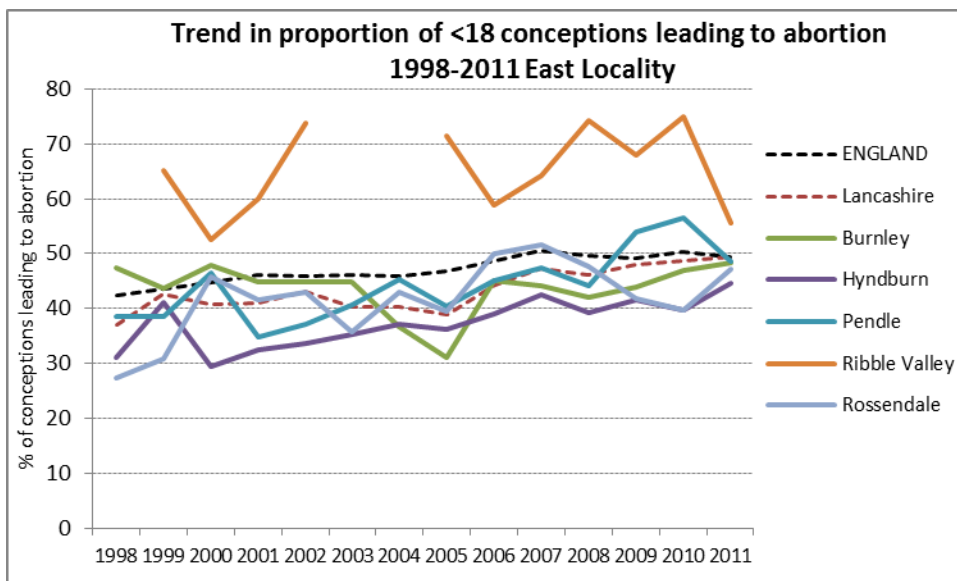
Figures 8 to 13 show a trend in under 18 abortion rate and trend in proportion of under 18 conceptions leading to abortion, by locality. In all localities the under 18 abortion rate has fluctuated over the years.

In East locality – The recent 4 years' data show a decline in under 18 abortion rate in Ribble Valley and Hyndburn. The recent 4 years' data show a rise in the proportion of <18 conceptions leading to abortion, in Burnley and Hyndburn.

**Figure 8: Trend in under 18 abortion rate, East locality**

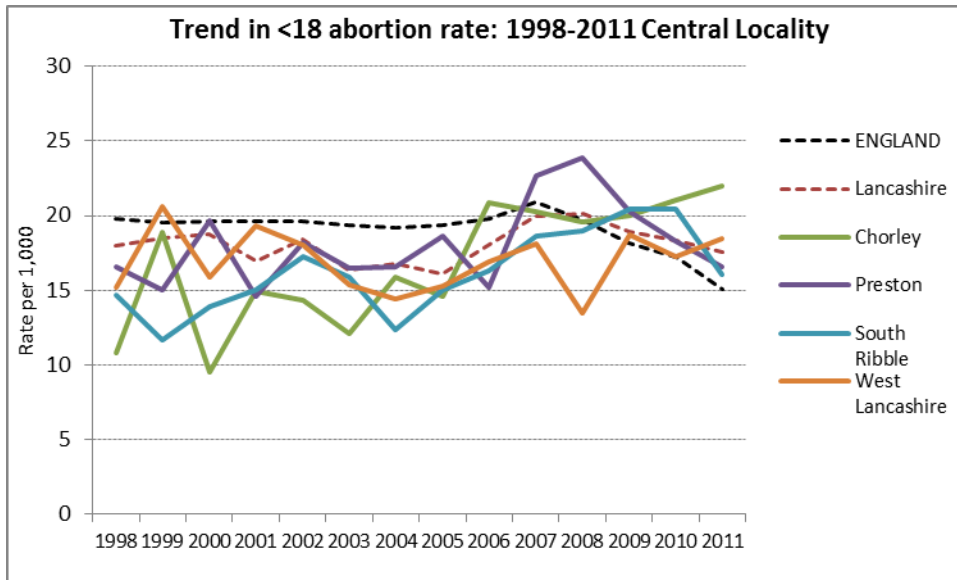


**Figure 9: Trend in under 18 conceptions leading to abortion, East locality**

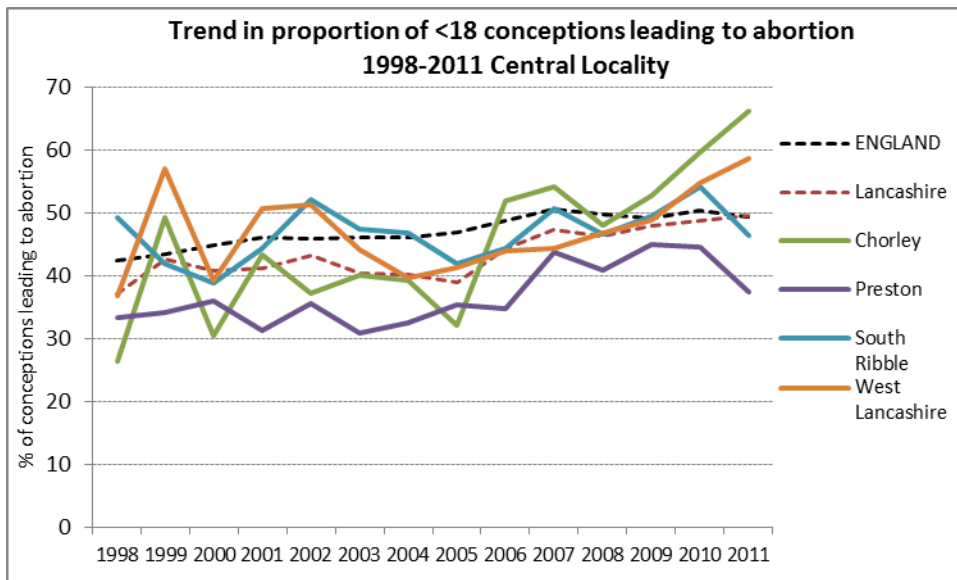


In Central locality – The recent 4 years' data show a decline in under 18 abortion rate in Preston and past 2 years data show a decline in under 18 abortion rate in South Ribble. The recent 4 years' data show a rise in the proportion of <18 conceptions leading to abortion, in Chorley and West Lancashire.

**Figure 10: Trend in under 18 abortion rate, Central locality**

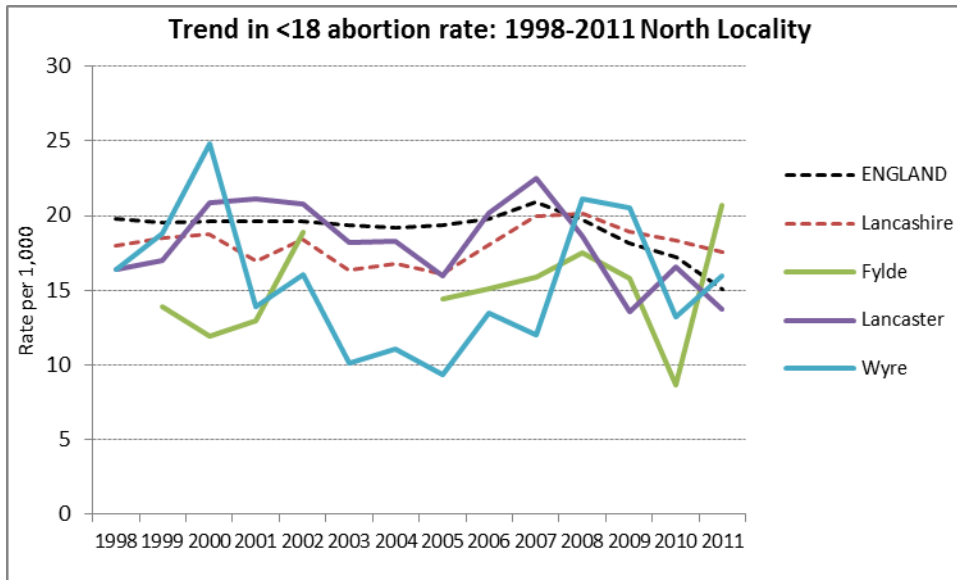


**Figure 11: Trend in under 18 conceptions leading to abortion, Central locality**



In North locality – The recent 2 years' data show a decline in under 18 abortion rate in Lancaster. The recent 4 years' data show a gradual decline in the proportion of <18 conceptions leading to abortion, in Wyre. The recent 2 years' show signs of stabilisation in the proportion of <18 conceptions leading to abortion in Lancaster and an increase in the proportion of <18 conceptions leading to abortion, in Fylde.

**Figure 12: Trend in under 18 abortion rate, North locality**



**Figure 13: Trend in under 18 conceptions leading to abortion, North locality**

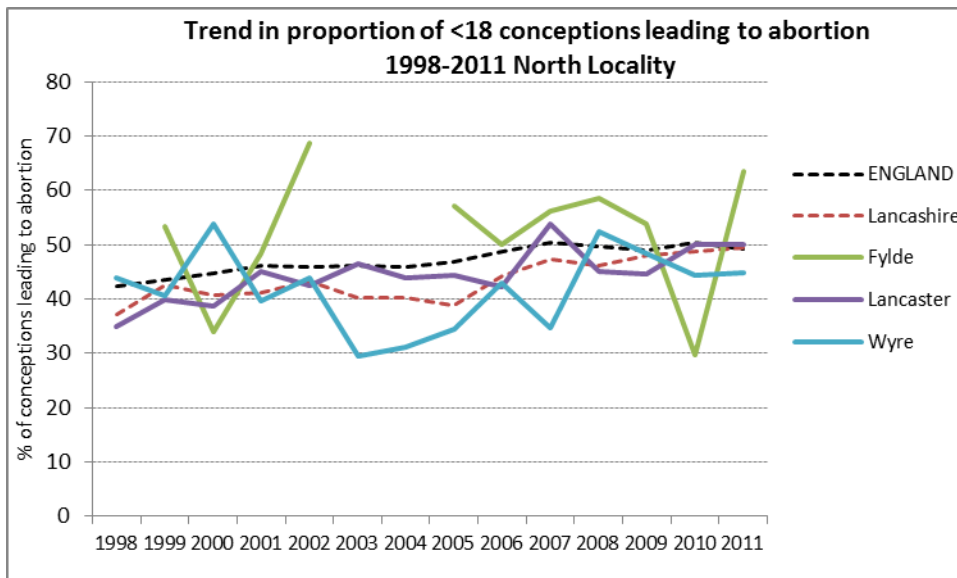
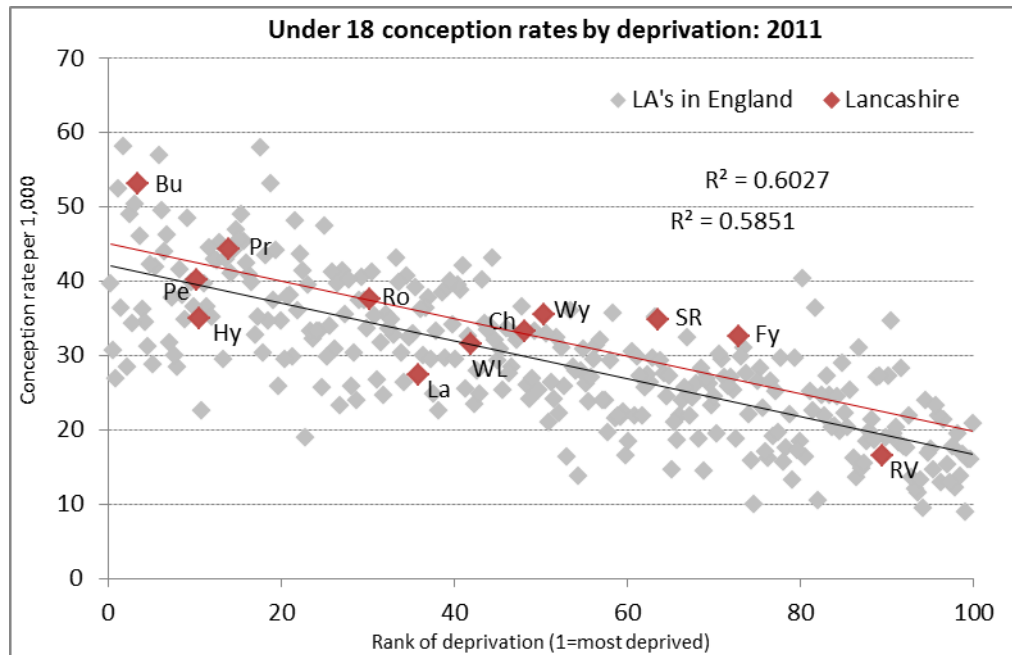


Figure 14 shows the relationship between deprivation and under 18 conception rates; there is a strong correlation ( $R^2=0.60$ ) between local authority deprivation and under 18 conception rate.

Figure 14: Under 18 conception rate by local authority deprivation, 2011



## 4 Under 16 conceptions

Figure 15 shows the number and proportion of under 16 conceptions leading to abortion. For the period of 2008-2010 and 2009-2011, proportion of under 16 conceptions leading to abortion remains highest in Pendle. For the period of 2009-2010, the proportion of under 16 conceptions leading to abortion is second highest in South Ribble and 3<sup>rd</sup> highest in Chorley and lowest in Wyre.

Figure 15: Under 16 conceptions: number and % leading to abortion

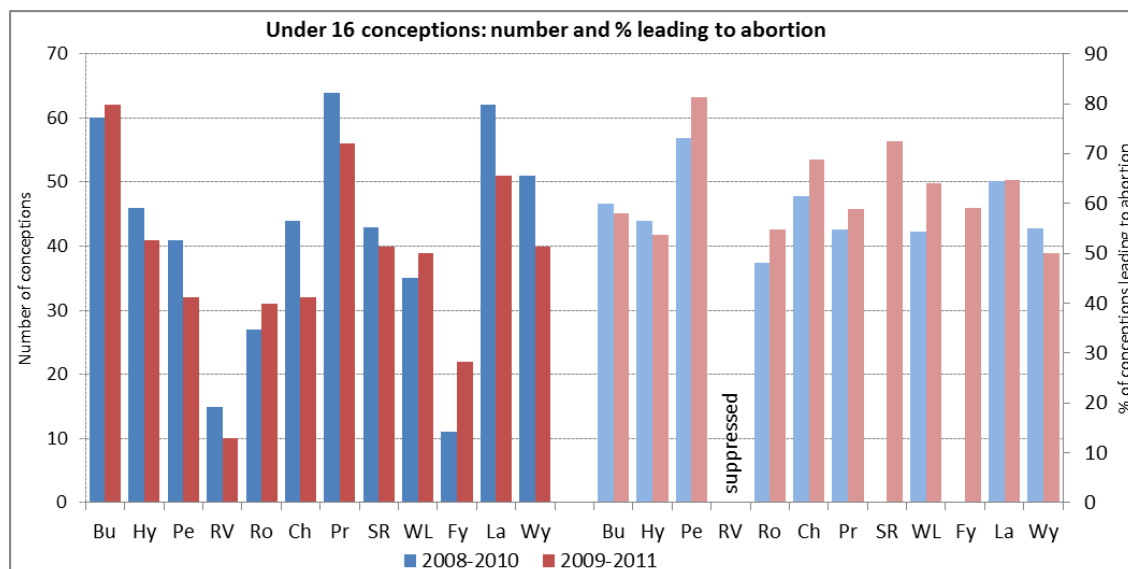


Table 2 presents the under 16 conceptions (numbers and rates) and outcome, three year aggregates, 2009-2011 and 2008-2010. For the 2 periods of 08-10 and 09-11, in Lancashire 12, the under 16 conception rate remains highest in Burnley (significantly higher than England) and lowest in Ribble Valley. In 2008-2010, Preston's under 16 conception rate was also significantly higher than the England's rate but this reduced in 2009-11, thereby, resulting in no significant difference from England rate.

**Table 2: Under 16 conceptions (numbers and rates) and outcome, three year aggregates, 2009-2011 and 2008-2010**

Source: Office for National Statistics

Significantly **higher** / **lower** than the national average

	2008-2010			2009-2011		
	Number of Conceptions	Conception rate per 1,000 women in age group	% of conceptions leading to abortion	Number of Conceptions	Conception rate per 1,000 women in age group	% of conceptions leading to abortion
ENGLAND	20,153	7.2	61.6	18,683	6.7	61.1
Blackburn with Darwen UA	62	7.0	74.2	45	5.0	*
Blackpool UA	<b>75</b>	<b>9.8</b>	38.7	<b>78</b>	<b>10.3</b>	52.6
Lancashire	499	7.8	59.9	456	7.2	61.6
Burnley	<b>60</b>	<b>12.3</b>	60.0	<b>62</b>	<b>12.9</b>	58.1
Chorley	44	7.7	61.4	32	5.6	68.8
Fylde	<b>11</b>	<b>2.9</b>	*	22	5.9	59.1
Hyndburn	46	9.0	56.5	41	8.2	53.7
Lancaster	62	7.9	64.5	51	6.8	64.7
Pendle	41	7.9	73.2	32	6.4	81.3
Preston	<b>64</b>	<b>9.6</b>	54.7	56	8.2	58.9
Ribble Valley	<b>15</b>	<b>4.3</b>	*	<b>10</b>	<b>2.9</b>	*
Rosendale	27	6.5	48.1	31	7.6	54.8
South Ribble	43	7.5	67.4	40	7.0	72.5
West Lancashire	35	5.9	54.3	39	6.6	64.1
Wyre	51	8.9	54.9	40	7.2	50.0

\*For conceptions leading to abortions, rates based on fewer than 10 events have been suppressed

Rates calculated from fewer than 20 events are distinguished by italic type as a warning to users that their reliability as a measure may be affected by the small number of events.

## 5 Live births

Table 3 presents live births in mothers aged under 18 years, 2009-2012

In Burnley and Preston, the rate of live births in mothers under 18 years is significantly higher than the England rate.

**Table 3: Live births (numbers and rate per 1,000): mothers aged <18**

Red/Green - Significantly higher/lower than the national average

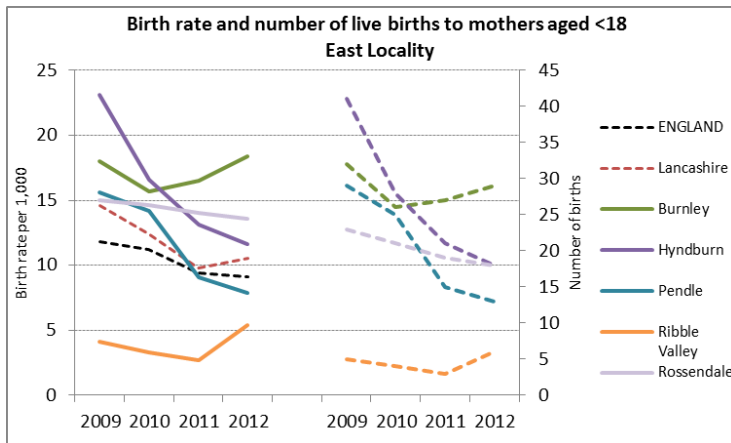
	2009		2010		2011		2012	
	No.	Rate	No.	Rate	No.	Rate	No.	Rate
ENGLAND	11,135	11.8	10,273	11.2	8,946	9.4	8,583	9.1
Blackburn with Darwen UA	39	12.7	42	14.0	40	12.9	28	8.9
Blackpool UA	<b>66</b>	<b>24.3</b>	<b>68</b>	<b>26.1</b>	<b>43</b>	<b>16.8</b>	<b>50</b>	<b>19.2</b>
Lancashire	<b>332</b>	<b>14.6</b>	271	12.4	207	9.8	221	10.5
Burnley	<b>32</b>	<b>18.0</b>	26	15.7	<b>27</b>	<b>16.5</b>	<b>29</b>	<b>18.4</b>
Chorley	24	12.6	19	10.0	16	8.2	14	7.1
Fylde	11	8.3	10	7.9	13	10.4	13	10.6
Hyndburn	<b>41</b>	<b>23.1</b>	<b>28</b>	<b>16.6</b>	21	13.1	18	11.6
Lancaster	36	13.2	27	10.2	21	8.7	16	6.7
Pendle	29	15.6	25	14.2	15	9.1	13	7.9
Preston	<b>51</b>	<b>21.5</b>	32	14.3	25	10.6	<b>39</b>	<b>16.8</b>
Ribble Valley	<b>5</b>	<b>4.1</b>	<b>4</b>	<b>3.3</b>	<b>3</b>	<b>2.7</b>	6	5.4
Rosendale	23	15.0	21	14.6	19	14.0	18	13.6
South Ribble	31	15.1	24	12.3	13	6.7	20	10.4
West Lancashire	21	10.1	24	11.9	17	8.5	14	7.0
Wyre	28	13.7	31	15.1	17	8.8	21	11.0

Source: Office for National Statistics

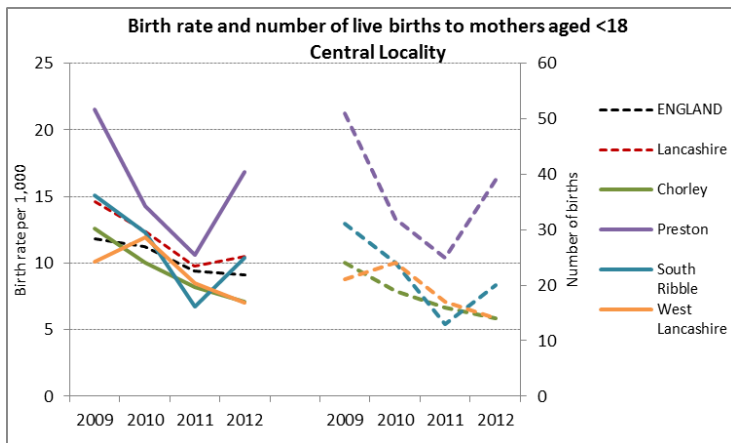
Figures 16 to 18 present birth rate and number of live births to mothers aged <18, by locality.



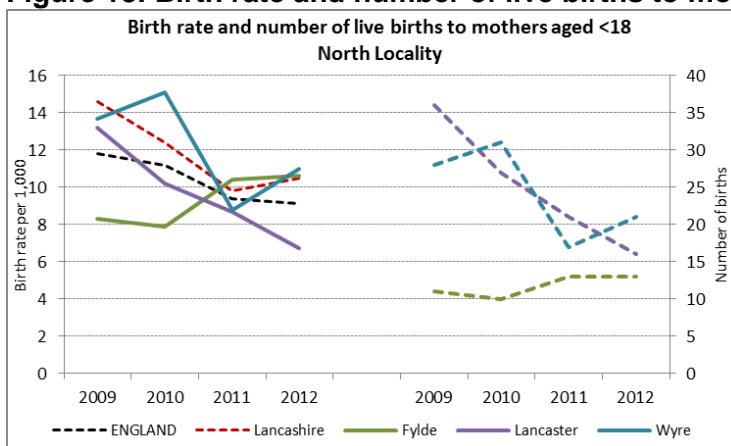
**Figure 16: Birth rate and number of live births to mothers aged <18 - East Locality**



**Figure 17: Birth rate and number of live births to mothers aged <18 - Central Locality**



**Figure 18: Birth rate and number of live births to mothers aged <18 - North Locality**



## 6 Abortions

Figure 19 shows the abortion rate by age group, in Lancashire CCGs. In all CCGs, abortion rate in 18-19 and 20-24 year olds is higher than the abortion rate in other age groups presented in figure 19.

Apart from Greater Preston CCG, in all other Lancashire CCGs, abortion rate in the 20-24 year olds is higher than the abortion rate in all other age groups.

Within Lancashire CCGs:

- The rate of abortion in under 18 year olds is highest in West Lancashire CCG and second highest in East Lancashire CCG.
- The rate of abortions in 18-19 year olds is highest in East Lancashire CCG and 2<sup>nd</sup> highest in West Lancashire CCG

**Figure 19: Legal abortions: numbers and rates by Clinical Commissioning Group of residence, by age, 2012**

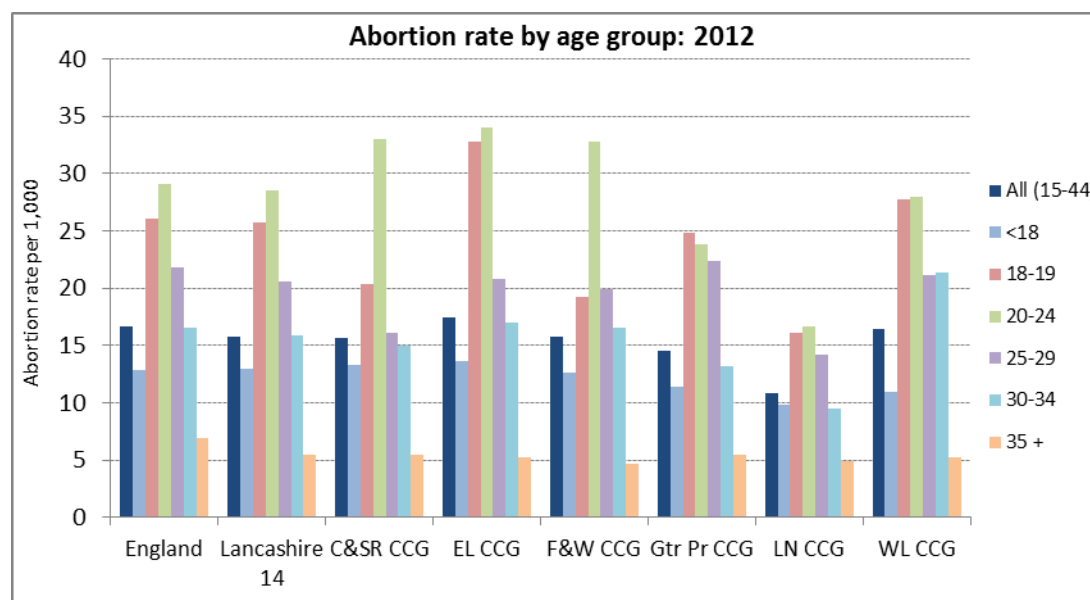


Figure 20 shows the number of abortions by age group, by CCG.

Across Lancashire CCGs:

- The number of abortions in under 18s is highest in East Lancashire CCG and 2<sup>nd</sup> highest in Chorley and South Ribble CCG.
- The number of abortions in 18-19 year olds is highest in east Lancashire CCG and 2<sup>nd</sup> highest in Greater Preston CCG.
- The number of abortions in 20-24 year olds is highest in east Lancashire CCG and 2<sup>nd</sup> highest in Greater Preston CCG.

**Figure 20: Number of abortions by age group: 2012**

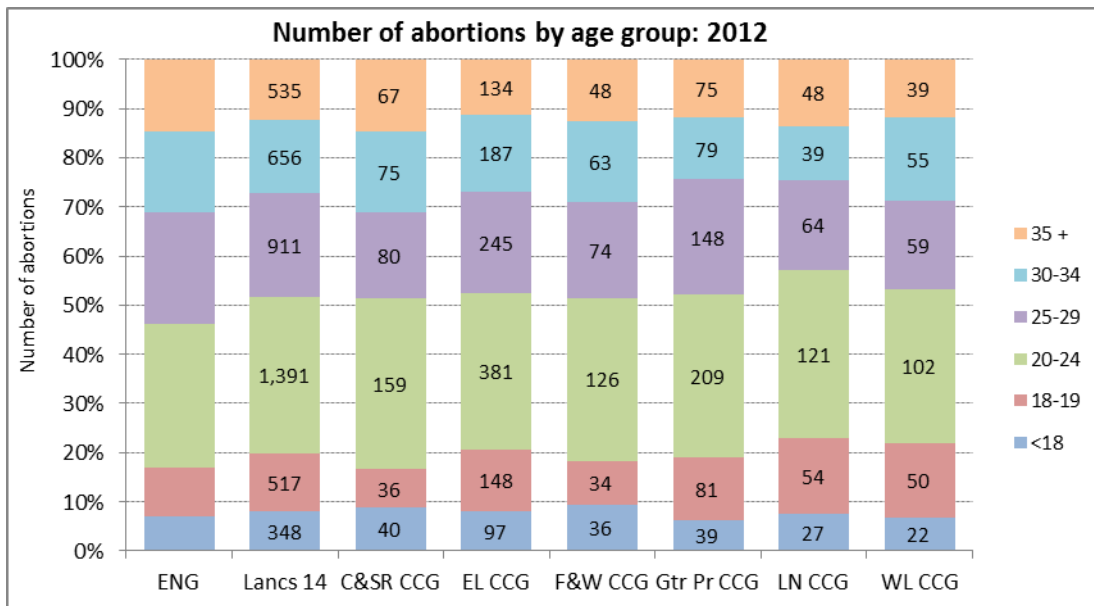


Figure 20 shows the % of all NHS funded abortions under 10 wks. In Chorley and South Ribble, Greater Preston and Fylde and Wyre CCG, the percentage of all NHS funded abortions under 10 weeks is higher than the England average.

**Figure 20: % of all NHS funded abortions under 10 wks**

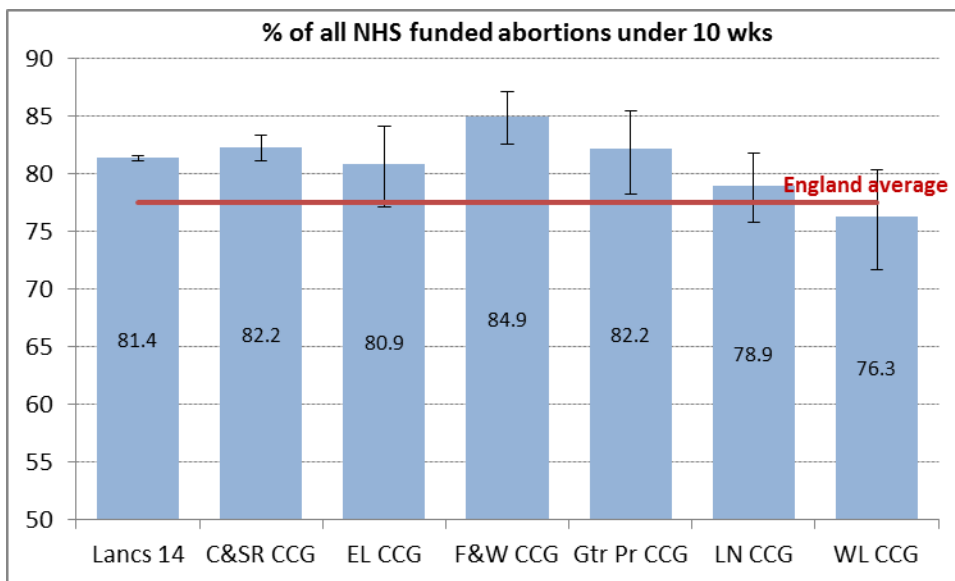


Table 4 presents information on legal abortions and method of abortion.

Within Lancashire CCGs, the total number of legal abortions is highest in East Lancashire CCG and 2<sup>nd</sup> highest in Greater Preston CCG. The percentage of repeat abortions in under 25 olds is highest in Greater Preston CCG and 2<sup>nd</sup> highest in Chorley and south Ribble CCG.

**Table 4: Legal abortions: method of abortion and repeat abortions, all ages and aged under 25 by CCG**

	Total abortions	Method of Abortion (%)		Repeat abortions (%)		
		Medical	Surgical	All ages	Age <25	Age 25+
<b>England</b>	<b>176,480</b>	<b>47.4</b>	<b>52.6</b>	<b>36.9</b>	<b>27.1</b>	<b>45.4</b>
Lancashire 14	4,358	69.7	30.3	35.1	26.4	44.4
NHS Blackburn with Darwen	489	90.8	9.2	34.8	23.4	43.9
NHS Blackpool	528	65.0	35.0	37.1	27.9	47.2
NHS Chorley and South Ribble	457	51.0	49.0	40.9	29.4	53.2
NHS East Lancashire	1,192	90.5	9.5	33.0	26.2	40.5
NHS Fylde & Wyre	381	65.9	34.1	36.7	26.0	48.1
NHS Greater Preston	631	56.4	43.6	38.2	30.7	46.4
NHS Lancashire North	353	49.6	50.4	30.3	22.3	41.1
NHS West Lancashire	327	48.3	51.7	28.7	21.3	37.3

## 7 Sexual Health Balanced Scorecard by locality

Tables 5 to 7 show the sexual health balanced scorecard by locality.

Table 5 shows that in East locality:

- The percentage of reduction in rate of < 18 conceptions is not significantly different from England; Hyndburn has the largest percentage reduction in East locality
- In Burnley and Pendle, the 2011 under 18 conception rate is significantly worse than England rate; in Ribble Valley it is significantly better than England
- In Burnley, the 2009-2011 under 16 conception rate is significantly worse than the England rate
- In Burnley the rate of acute STI diagnoses is significantly higher than the England rate and in Pendle, Rossendale and Ribble Valley it is significantly lower than the England rate
- In all East locality districts, the percentage of 15-24 year olds tested for chlamydia outside GUM clinics is significantly worse than the England rate; lowest in Rossendale
- In Pendle and Rossendale the rate of age 15-24 years chlamydia diagnoses in all settings is significantly worse than the England rate
- In Burnley, the rate of Pelvic Inflammatory Disease related admissions (age 15-44) is significantly higher than the England rate
- In all East locality districts, HIV test uptake in GUM clinics is significantly worse than the England rate; highest in Ribble Valley
- In Burnley, Hyndburn and Pendle, the percentage achieving 5 GCSE A-C grades (inc English & Maths) is significantly worse than England (2010/2011)

Table 5: Sexual Health Balanced Scorecard: East Locality summary

				England	Lancashire	Burnley	Hyndburn	Pendle	Ribble Valley	Rosendale
Teena ge conceptions	KEY – Reduction in rate of < 18 conceptions	%	1998 to 2011	34.1	26.6	35.4	51.3	37.1	16.7	37.0
	Under 18 conceptions	Rate/ 1,000	2011	30.7	35.6	53.2	35.0	40.2	16.5	37.6
	Under 16 conceptions	Rate/ 1,000	2009-11	6.7	7.2	12.9	8.2	6.4	2.9	7.6
Aborti ons	Under 18 conceptions leading to abortion <sup>1</sup>	%	2011	49.3	49.5	48.3	44.6	48.5	55.6	47.1
Sexua lly Trans mitted Infe cti ons and HIV	KEY – Acute STI diagnoses	Rate/ 100,000	2011	794.5	750.0	917.8	806.4	582.1	531.9	685.7
	KEY – Age 15-24 tested for chlamydia outside GUM clinics	%	2011/12	20.5	21.8	19.2	16.1	13.5	14.9	14.8
	Age 15-24 test (+) for chlamydia outside GUM clinics <sup>1</sup>	%	2011/12	5.9	6.1	8.2	8.0	6.3	6.8	7.0
	KEY – Age 15-24 chlamydia diagnoses in all settings	Rate/ 100,000	2011	2124.6	2243.7	2294.6	2146.9	1371.5	1837.7	1665.5
	Pelvic inflammatory disease related admissions age 15-44	Rate/ 100,000	2010/11	247.9	238.6	434.6	319.0	286.2	180.0	277.7
	KEY – Gonorrhoea diagnoses in GUM clinics	Rate/ 100,000	2011	39.1	22.7	10.6	22.2	22.4	8.6	19.3
	KEY – Syphilis diagnoses in GUM clinics	Rate/ 100,000	2011	5.4	2.6	5.9	1.2	3.4	1.7	3.0
	KEY – HIV test uptake in GUM clinics	%	2011	80.3	72.5	55.0	58.6	57.5	67.3	65.3
	KEY – HIV diagnoses with CD4 cell count <350 at time of diagnosis	%	2008-10	52.3	-	44.4	71.4	70.0	suppressed	44.4
	KEY - Prevalence of diagnosed HIV (15-59 yrs) <sup>2</sup>	Rate/ 1,000	2010	1.9	0.6	0.5	0.5	0.4	0.5	0.8
Aware ness/ Attitu des	12-15 yr old who find sex & relationship advice helpful	%	2009/10	53.0	53.0	53.0	53.0	53.0	53.0	53.0
Sexua l Assaults	Police recorded rape of females	Rate/ 100,000	2011/12	52.1	45.6	56.4	29.4	52.9	10.3	31.8
Other relate d factor s	Achievement of 5 GCSE A-C grades (inc Eng & Maths)	%	2010/11	58.4	60.0	40.1	53.9	50.4	71.1	63.4
	Deprivation (IMD 2010)	Average score	2010	21.5	22.5	37.3	30.5	30.7	9.9	23.5

Source: Public Health England

Table 6 shows that in Central locality:

- In South Ribble the percentage of reduction in rate of < 18 conceptions is significantly worse than England; West Lancashire has the largest percentage reduction in East locality
- In Preston, the 2011 under 18 conception rate is significantly worse than England rate
- In all Central districts, the 2009-2011 under 16 conception rate is not significantly different from the England rate
- In Preston the rate of acute STI diagnoses is significantly higher than the England rate and in Chorley and West Lancashire it is significantly lower than the England rate
- In West Lancashire, the percentage of 15-24 year olds tested for chlamydia outside GUM clinics is significantly worse than England; in the other three Central districts it is better than England
- In West Lancashire, the rate of age 15-24 years chlamydia diagnoses in all settings is significantly worse than England; in the other three Central districts it is better than England
- In West Lancashire, the rate of Pelvic Inflammatory Disease related admissions (age 15-44) is significantly higher than the England rate and in Preston it is significantly better than the England
- In West Lancashire, HIV test uptake in GUM clinics is significantly better than England
- In Preston, the rate of police recorded rape of females is worse than England
- Apart from West Lancashire, in the other three Central locality districts, the percentage achieving 5 GCSE A-C grades (inc. English & Maths) is significantly better than England (2010/2011)

Table 6: Sexual Health Balanced Scorecard: Central Locality summary

				England	Lancashire	Chorley	Preston	South Ribble	West Lancashire
Teenage conceptions	KEY – Reduction in rate of < 18 conceptions	%	1998 to 2011	34.1	26.6	18.8	10.9	-16.8	24.3
	Under 18 conceptions	Rate/1,000	2011	30.7	35.6	33.3	44.3	34.8	31.5
	Under 16 conceptions	Rate/1,000	2009-11	6.7	7.2	5.6	8.2	7.0	6.6
Abortions	Under 18 conceptions leading to abortion <sup>1</sup>	%	2011	49.3	49.5	66.2	37.5	46.3	58.7
Sexually Transmitted Infections and HIV	KEY – Acute STI diagnoses	Rate/100,000	2011	794.5	750.0	669.7	1279.6	832.4	671.4
	KEY – Age 15-24 tested for chlamydia outside GUM clinics	%	2011/12	20.5	21.8	23.0	34.8	25.4	17.1
	Age 15-24 test (+) for chlamydia outside GUM clinics <sup>1</sup>	%	2011/12	5.9	6.1	7.1	6.1	6.3	5.3
	KEY – Age 15-24 chlamydia diagnoses in all settings	Rate/100,000	2011	2124.6	2243.7	2552.9	3217.1	2691.0	1768.9
	Pelvic inflammatory disease related admissions age 15-44	Rate/100,000	2010/11	247.9	238.6	180.0	180.6	242.7	453.9
	KEY – Gonorrhoea diagnoses in GUM clinics	Rate/100,000	2011	39.1	22.7	23.7	39.2	15.7	28.1
	KEY – Syphilis diagnoses in GUM clinics	Rate/100,000	2011	5.4	2.6	0.9	6.7	1.8	0.0
	KEY – HIV test uptake in GUM clinics	%	2011	80.3	72.5	81.0	80.4	80.7	84.8
	KEY – HIV diagnoses with CD4 cell count <350 at time of diagnosis	%	2008-10	52.3	-	36.4	66.7	42.9	suppressed
	KEY - Prevalence of diagnosed HIV (15-59 yrs) <sup>2</sup>	Rate/1,000	2010	1.9	0.6	0.4	1.2	0.5	0.4
Awareness/ Attitudes	12-15 yr old who find sex & relationship advice helpful	%	2009/10	53.0	53.0	53.0	53.0	53.0	53.0
Sexual Assaults	Police recorded rape of females	Rate/100,000	2011/12	52.1	45.6	41.1	97.3	39.5	28.1
Other related factors	Achievement of 5 GCSE A-C grades (inc Eng & Maths)	%	2010/11	58.4	60.0	62.4	63.2	65.1	57.2
	Deprivation (IMD 2010)	Average score	2010	21.5	22.5	18.0	29.4	14.8	20.1

Source: Public Health England



Table 7 shows that in North locality:

- In all North locality districts, the reduction in rate of under 18 conceptions is not significantly different from England
- In all North locality districts, under 18 conception rate is not significantly different from the England rate
- In all North locality districts, the 2009-2011 under 16 conception rate is not significantly different from the England rate
- In Fylde and Wyre the rate of acute STI diagnoses is significantly better than the England rate
- In Lancaster, the percentage of 15-24 year olds tested for chlamydia outside GUM clinics is significantly worse than England
- In Wyre, the rate of age 15-24 years chlamydia diagnoses in all settings is significantly better than England
- In Lancaster and Wyre, the rate of Pelvic Inflammatory Disease related admissions (age 15-44) is significantly lower than the England rate
- In all North locality districts, gonorrhoea diagnoses in GUM clinics is significantly lower than England
- In Lancaster and Wyre, HIV test uptake in GUM clinics is significantly worse than England
- In Fylde and Lancaster, the percentage achieving 5 GCSE A-C grades (inc. English & Maths) is significantly better than England (2010/2011)

Table 7: Sexual Health Balanced Scorecard: North Locality summary

				England	Lancashire	Fylde	Lancaster	Wyre
Teenage conceptions	KEY – Reduction in rate of < 18 conceptions	%	1998 to 2011	34.1	26.6	-0.9	41.6	4.8
	Under 18 conceptions	Rate/ 1,000	2011	30.7	35.6	32.6	27.4	35.6
	Under 16 conceptions	Rate/ 1,000	2009-11	6.7	7.2	5.9	6.8	7.2
Abortions	Under 18 conceptions leading to abortion <sup>1</sup>	%	2011	49.3	49.5	63.4	50.0	44.9
Sexually Transmitted Infections and HIV	KEY – Acute STI diagnoses	Rate/ 100,000	2011	794.5	750.0	582.9	843.3	701.9
	KEY – Age 15-24 tested for chlamydia outside GUM clinics	%	2011/12	20.5	21.8	20.0	19.8	26.2
	Age 15-24 test (+) for chlamydia outside GUM clinics <sup>1</sup>	%	2011/12	5.9	6.1	4.8	4.4	5.3
	KEY – Age 15-24 chlamydia diagnoses in all settings	Rate/ 100,000	2011	2124.6	2243.7	1896.8	1949.2	2449.6
	Pelvic inflammatory disease related admissions age 15-44	Rate/ 100,000	2010/11	247.9	238.6	181.2	106.5	130.4
	KEY – Gonorrhoea diagnoses in GUM clinics	Rate/ 100,000	2011	39.1	22.7	20.9	25.5	19.8
	KEY – Syphilis diagnoses in GUM clinics	Rate/ 100,000	2011	5.4	2.6	0.0	2.1	2.7
	KEY – HIV test uptake in GUM clinics	%	2011	80.3	72.5	79.5	71.4	76.7
	KEY – HIV diagnoses with CD4 cell count <350 at time of diagnosis	%	2008-10	52.3	-	50.0	37.5	37.5
	KEY - Prevalence of diagnosed HIV (15-59 yrs) <sup>2</sup>	Rate/ 1,000	2010	1.9	0.6	1.0	0.5	0.7
Awareness/ Attitudes	12-15 yr old who find sex & relationship advice helpful	%	2009/10	53.0	53.0	53.0	53.0	53.0
Sexual Assaults	Police recorded rape of females	Rate/ 100,000	2011/12	52.1	45.6	17.9	53.1	43.2
Other related factors	Achievement of 5 GCSE A-C grades (inc Eng & Maths)	%	2010/11	58.4	60.0	63.9	66.2	59.4
	Deprivation (IMD 2010)	Average score	2010	21.5	22.5	12.8	21.9	17.3

Source: Public Health England

