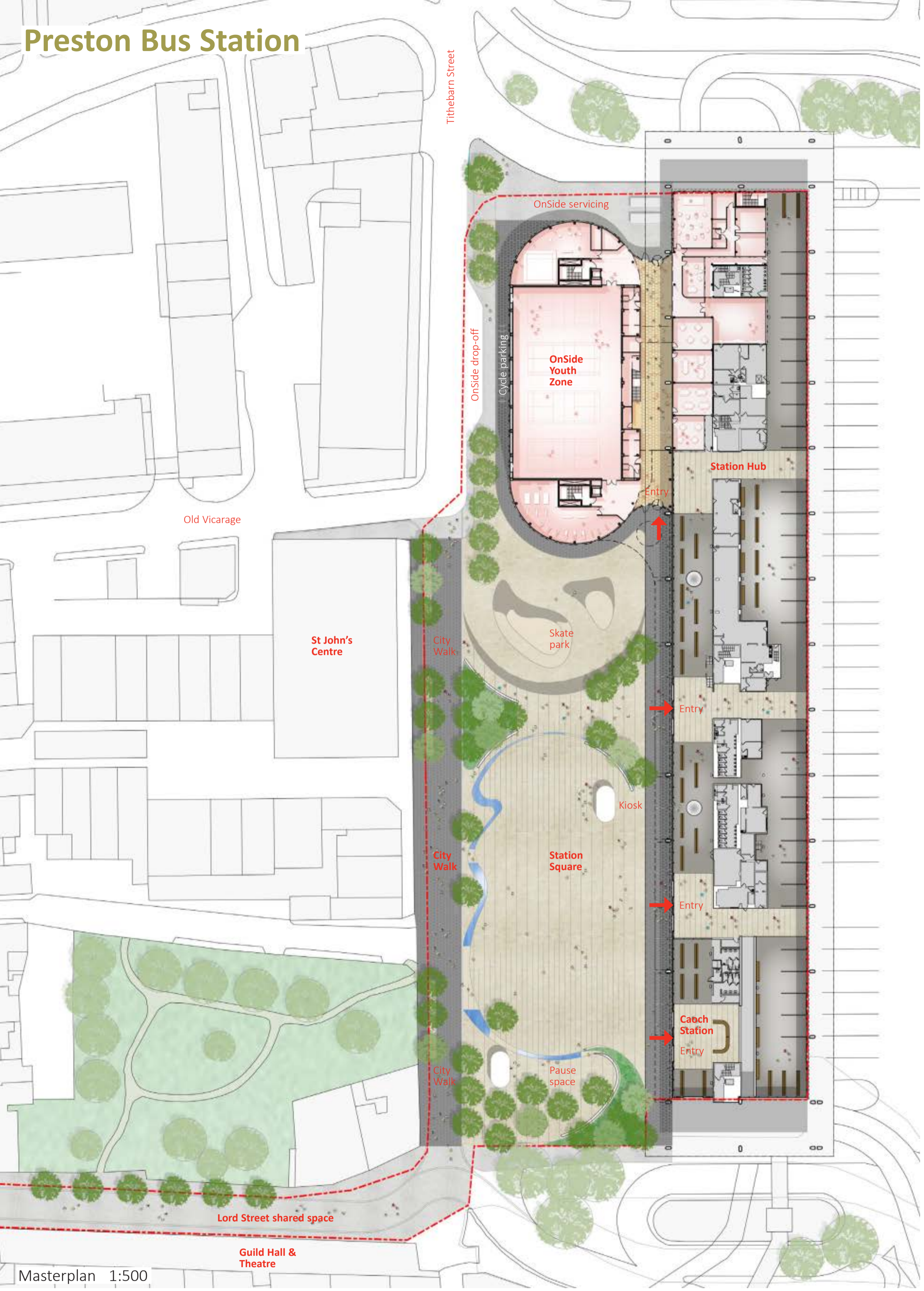


# Preston Bus Station



Drawing on Preston's proud heritage of textile manufacturing, the masterplan is conceived as a 'textured carpet' that weaves together a range of functions into an open and accessible pedestrian space. The 'carpet' is composed of materials relating to the surrounding built environment and planting local to the area to create a strong sense of identity for the development.

## Textured Carpet



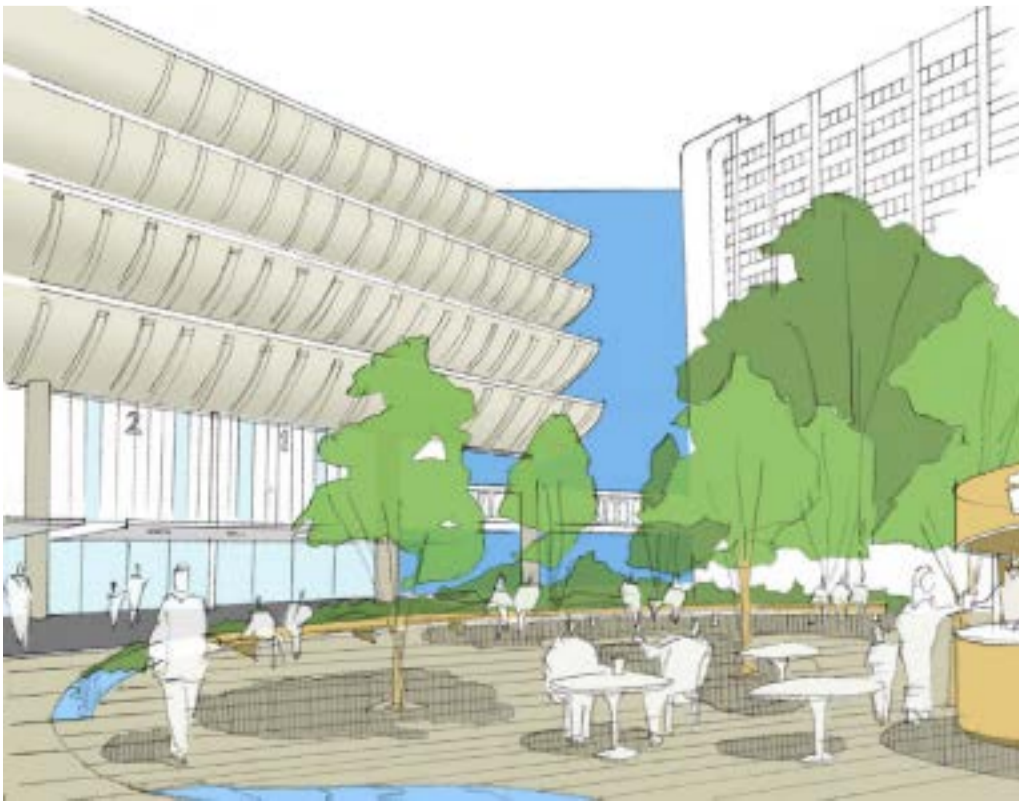
### Station Square

This generous public space is defined by trees and water, providing an attractive setting for public events of all types and scales. A skate park is integrated into the design to the north of Station Square. It can be supervised from the Youth Zone and brings life and animation to the public space.



### City Walk

To the west of the public space, a formal tree-lined pedestrian boulevard connects the Lord Street shared space to Guild Hall, the St John's Centre and beyond. Pedestrians and cyclists have been prioritised throughout the design, while also accommodating proposed vehicle movements.

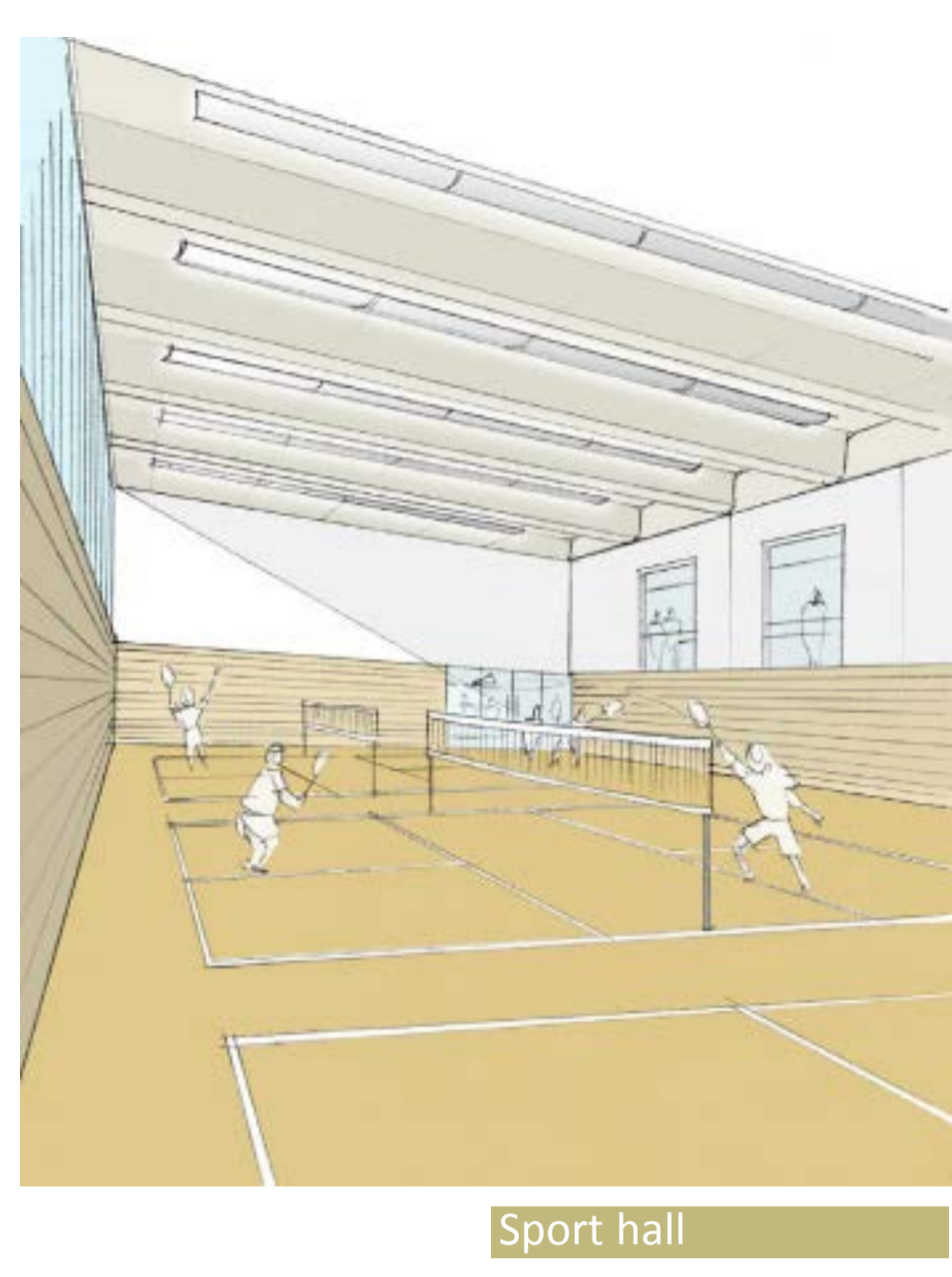


### Pause Space

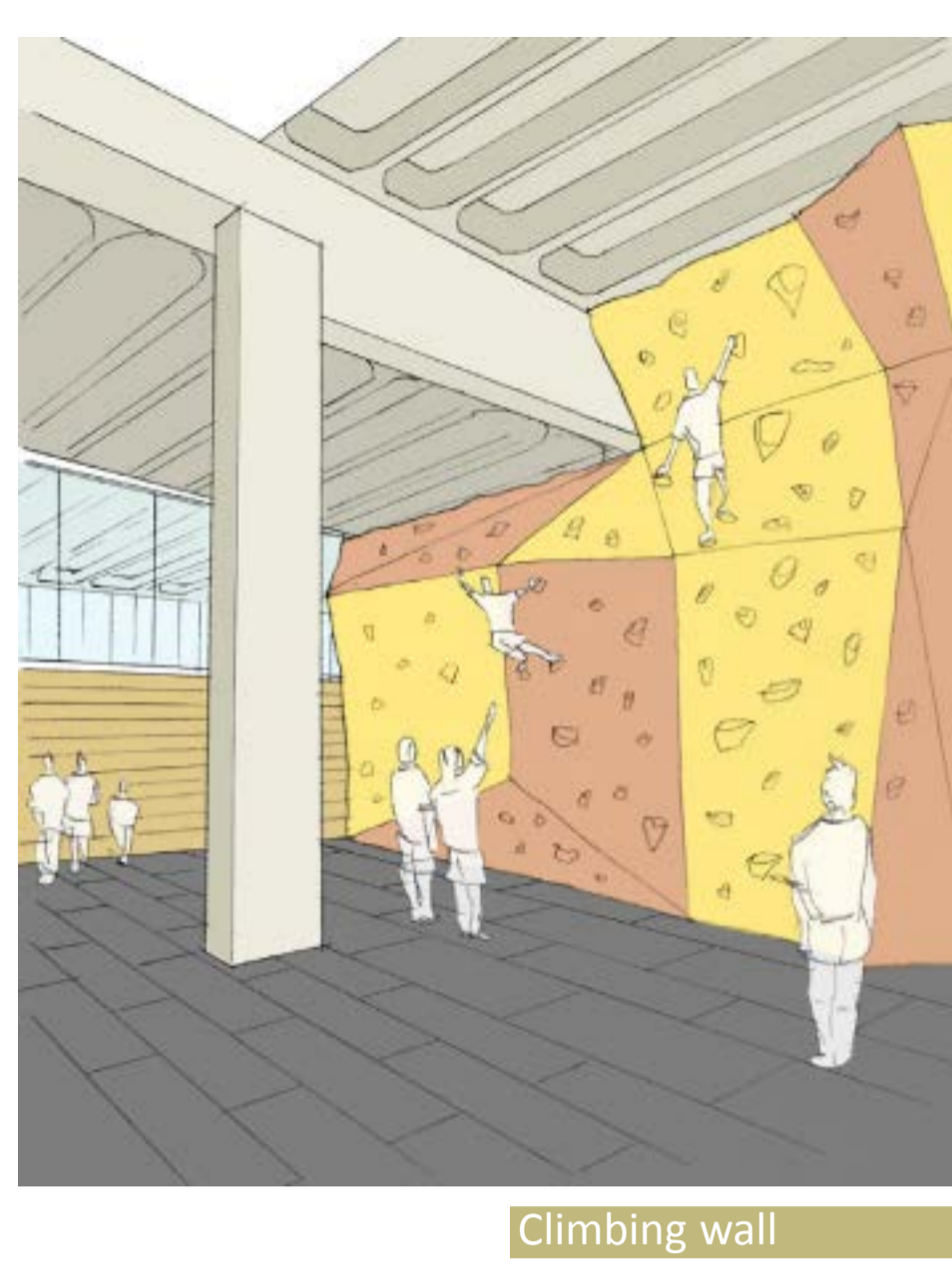
An informal, intimate pocket to the south of the site that is characterised by trees and planting. The Pause Space offers a calm, secluded oasis where people can sit and relax. A series of kiosks dotted across the 'carpet' can be used as retail outlets or pop-up community spaces.

# OnSide Youth Zone

The OnSide Youth Zone creates a bold, bright and modern environment that is appealing to young people. The central Activity Space forms a focalpoint that brings everybody together and fosters a sense of openness and community. The Sport Hall is at the heart of the new building, while the double-height climbing wall is sited within the existing building, creating an exciting challenge for climbers to reach right up to the Bus Station's ceiling.



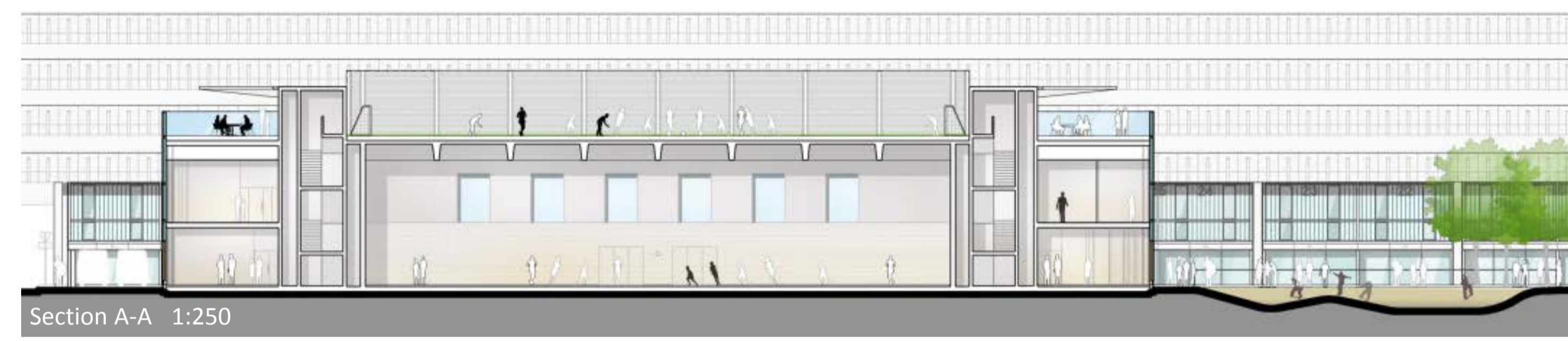
Sport hall



Climbing wall



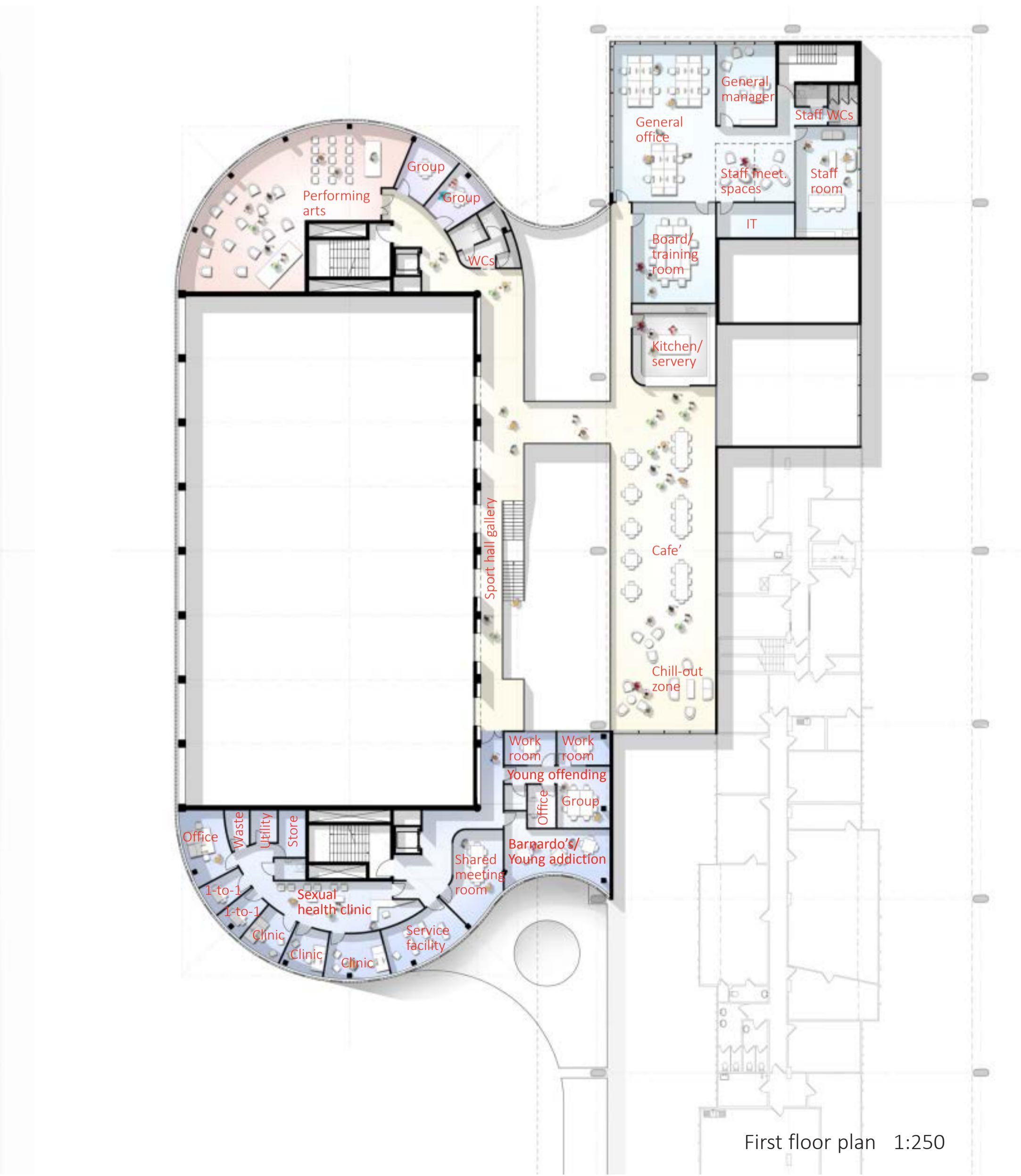
Activity Space



Section A-A 1:250



Ground floor plan 1:250



First floor plan 1:250



Roof plan 1:250

**Key**

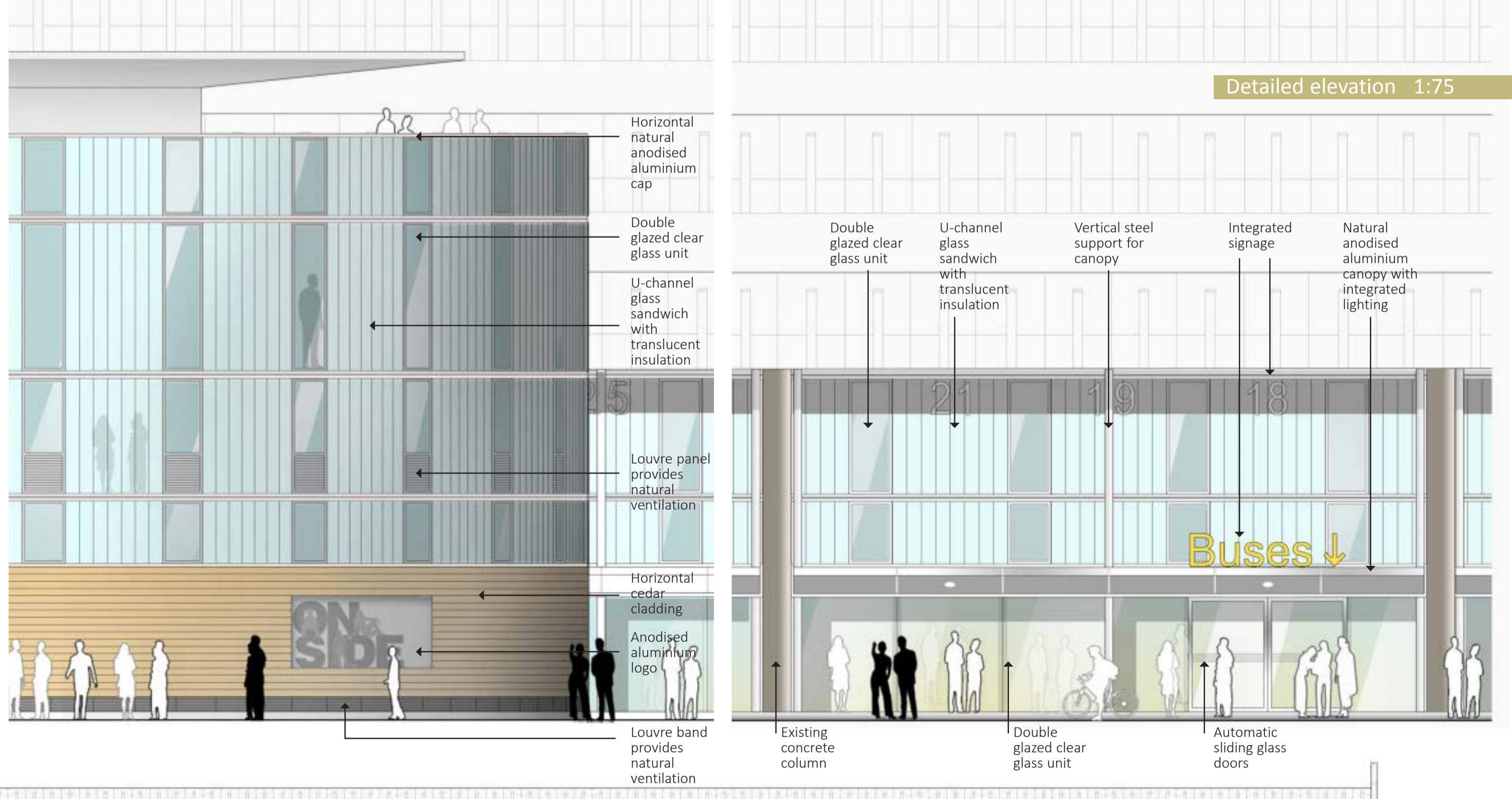
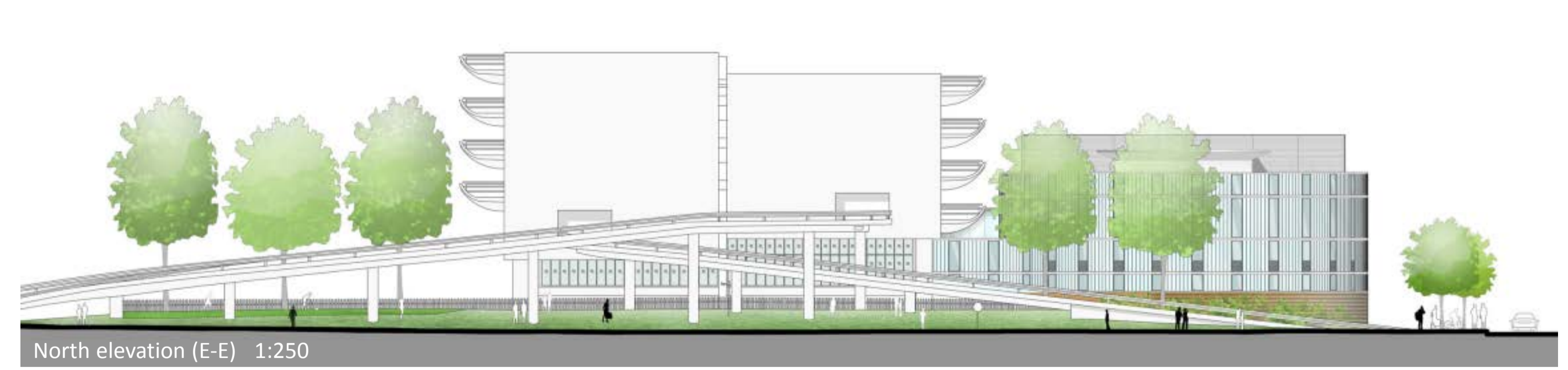
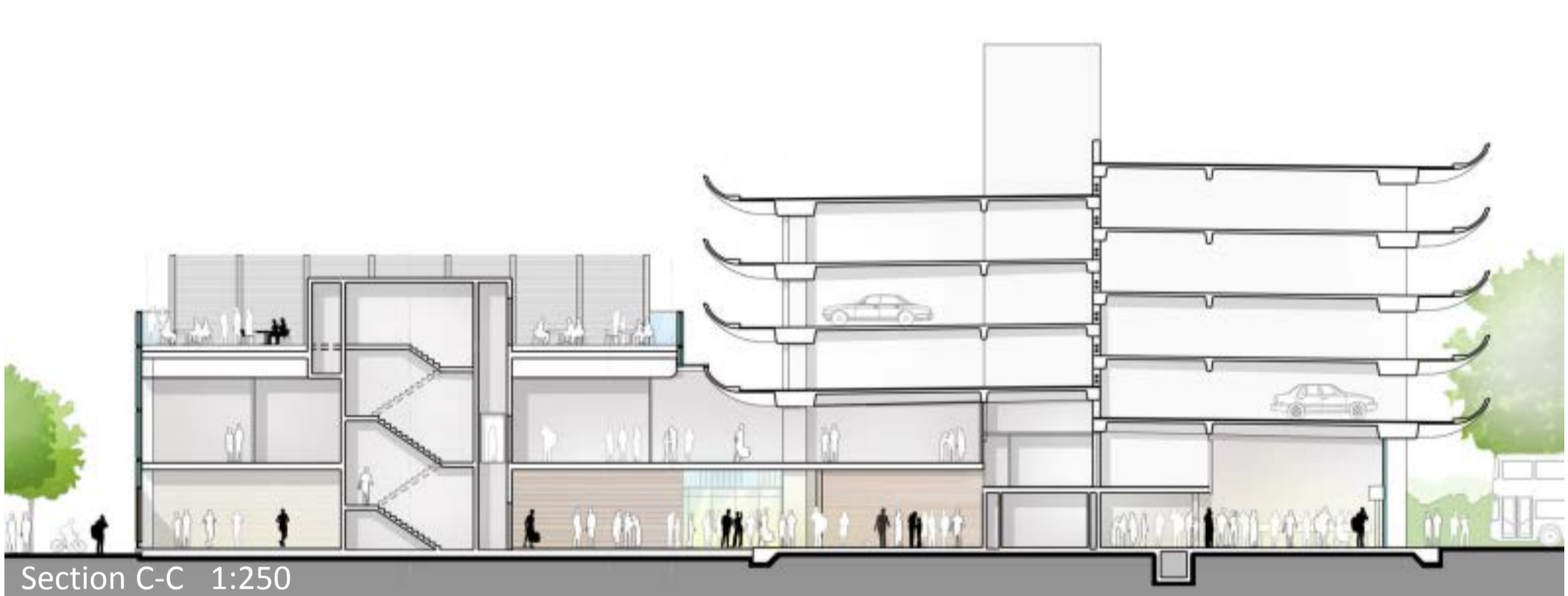
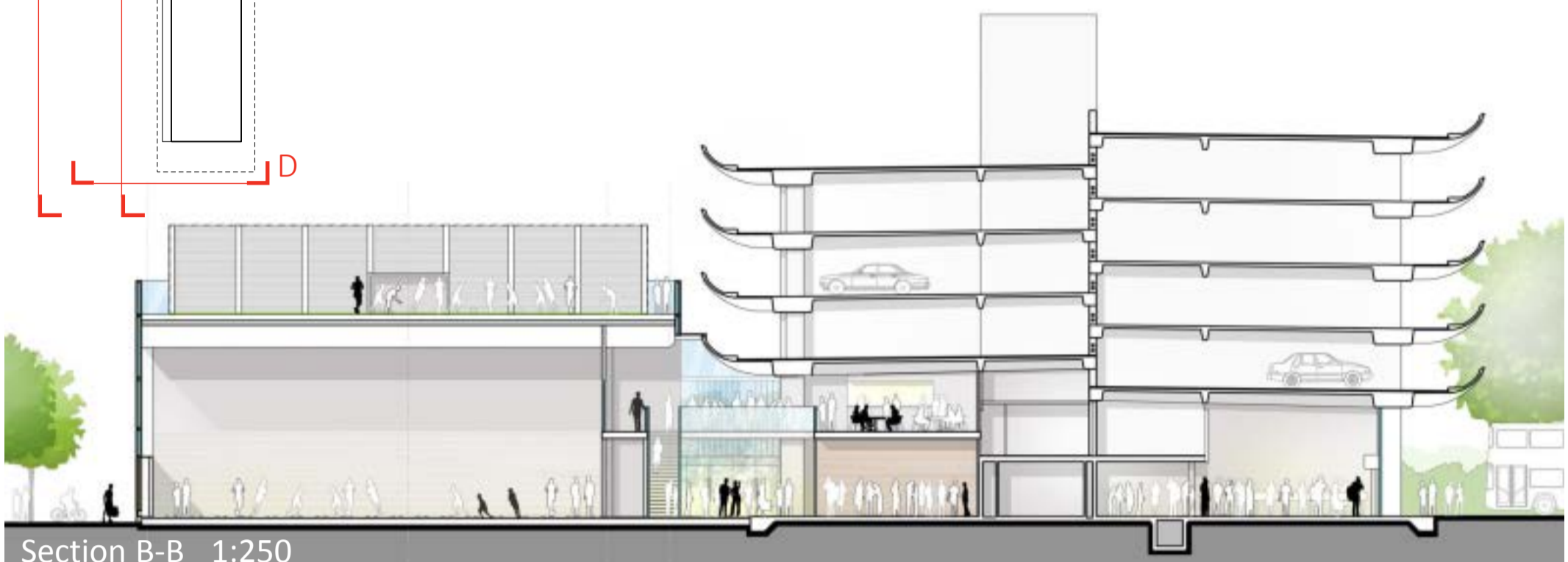
Communal	Yellow
Sports	Light Green
Arts/meeting	Purple
Performance	Red
Plus Partners	Blue
Administration	Light Blue
Support	Grey
Kick-pitch	Dark Green

# Preston Bus Station

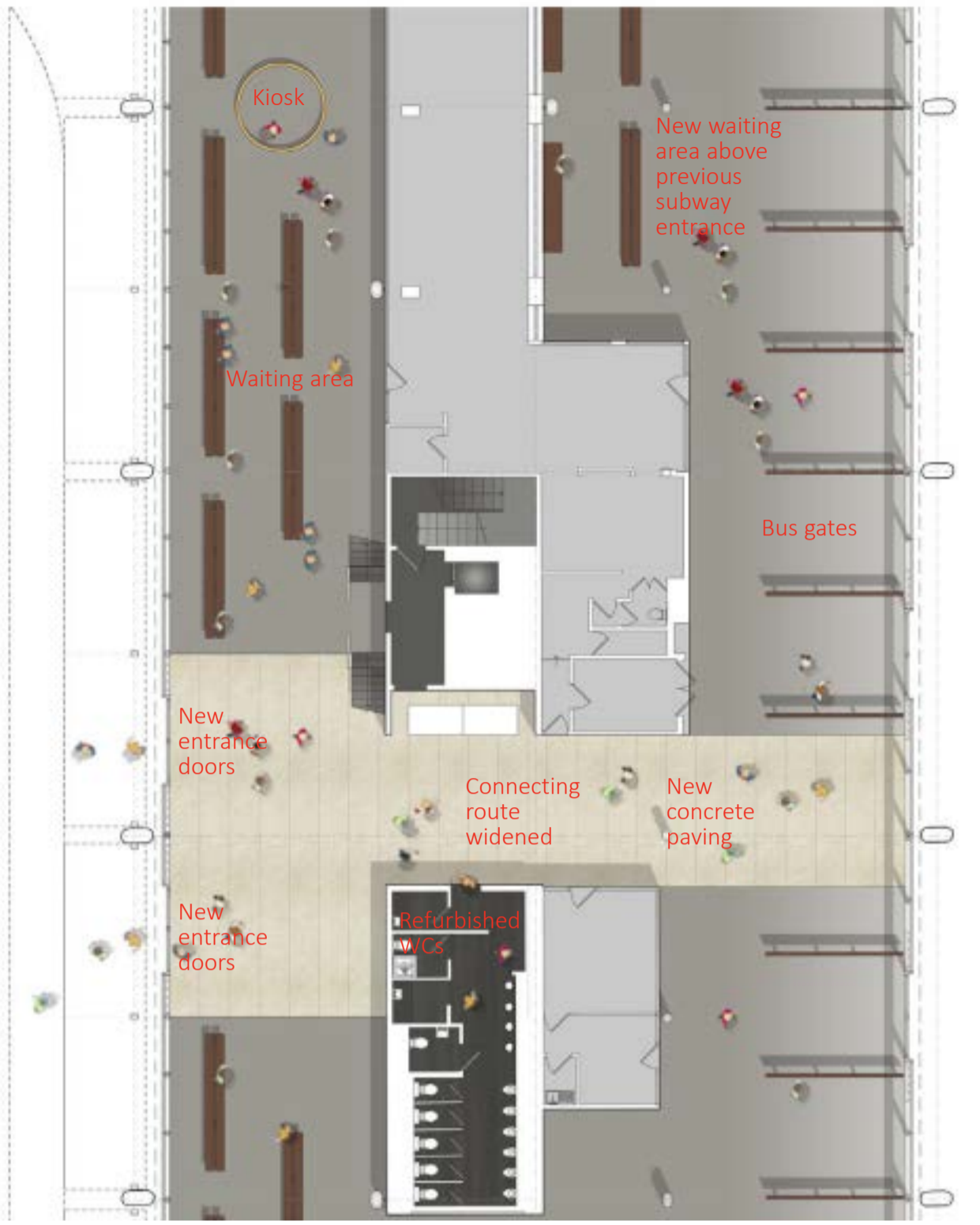


View towards OnSide Youth Zone from south

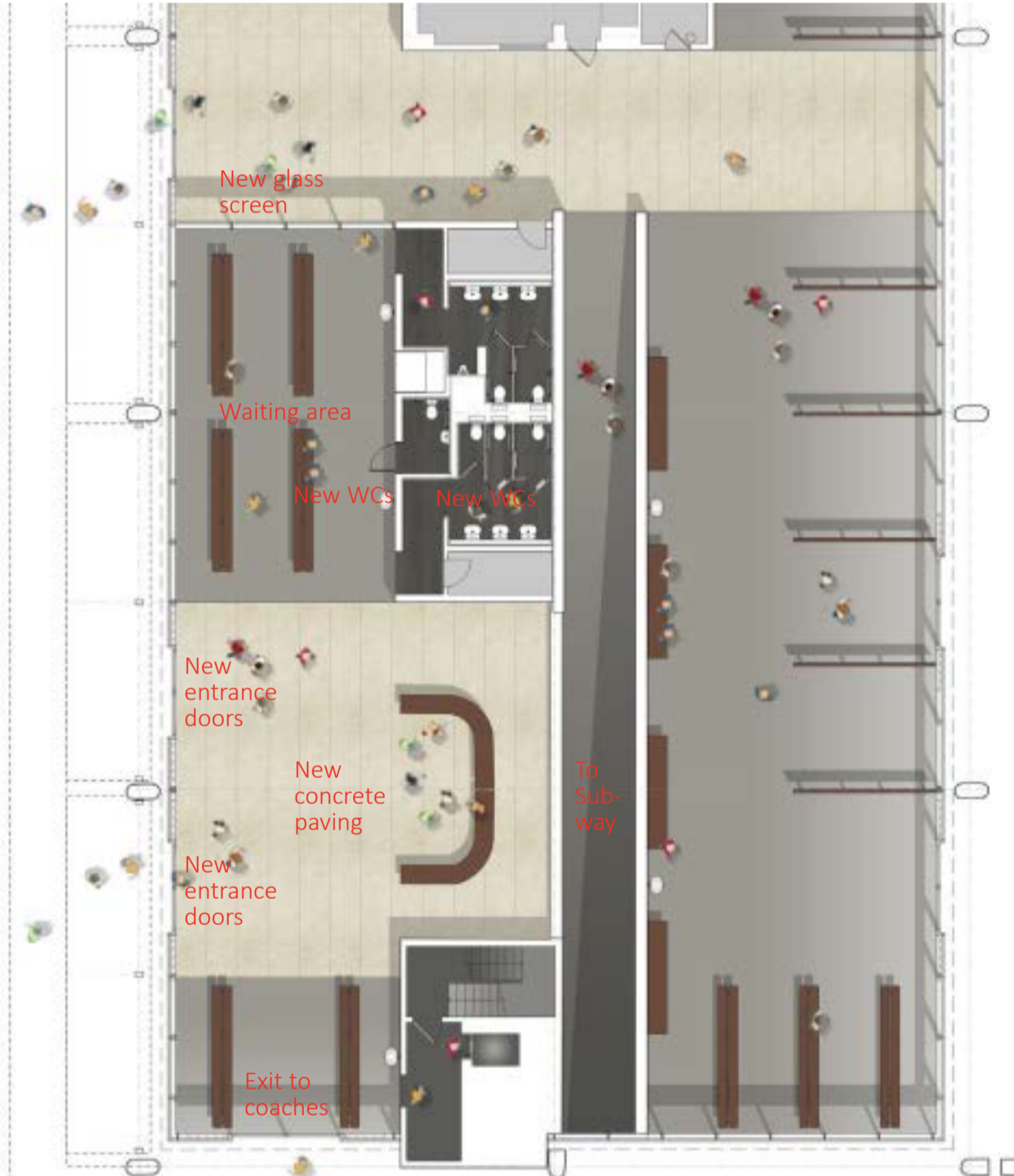
A flowing, translucent curtain forms the new facade to the Bus Station that billows out to create the OnSide Youth Zone. The horizontal lines and curved geometry of the new structure echo the existing building. Composed of clear glazing and translucent insulated panels, the curtain improves the thermal performance of the existing and forms a warm blanket around the new.



# Preston Bus Station



Bus Station entrance/waiting area plan 1:200



Coach Station plan 1:200



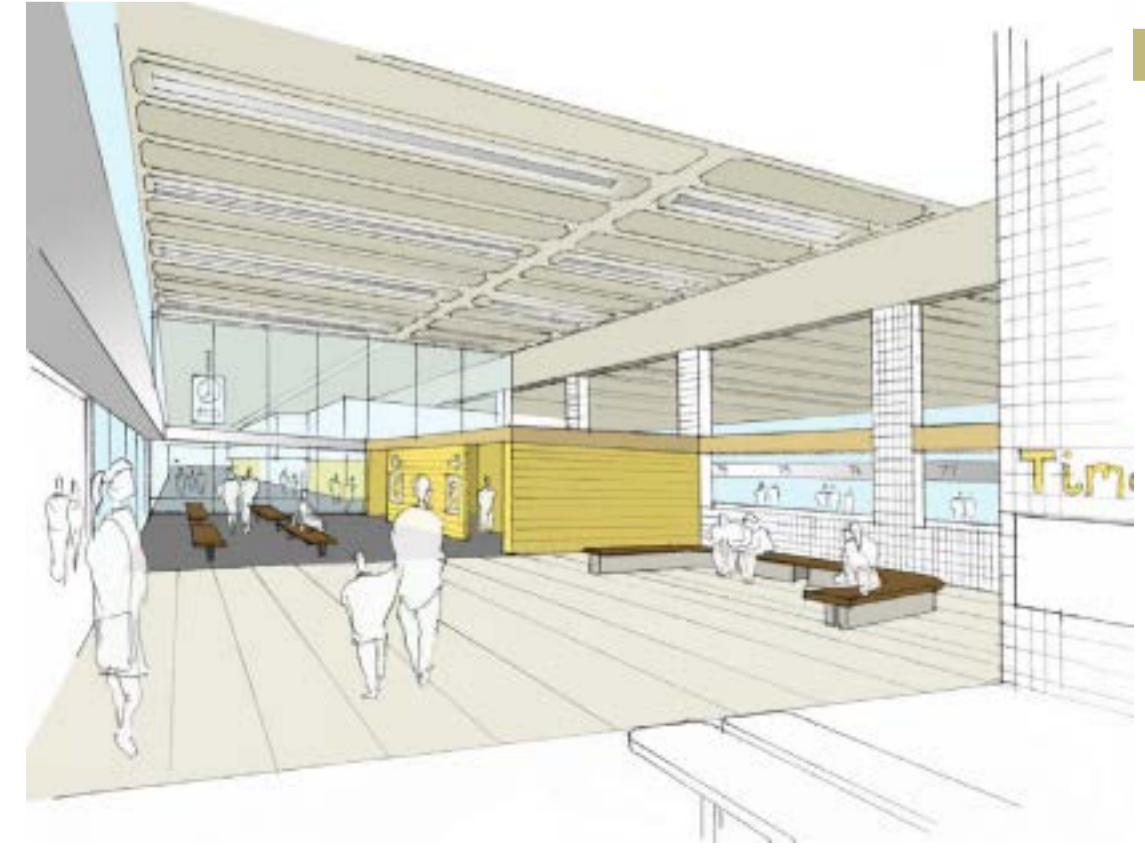
View from new entrance along Station Hub west side



Bus Station interior west elevation 1:200

The station will be refurbished to emphasise the open and streamlined nature of the original design. New areas of paved flooring highlight the entrances and aid orientation. Signage will be integrated into the building's surfaces and new lighting will illuminate the concrete soffit. New waiting areas are added: the existing timber dividers will be re-used as benches and free-standing timber kiosks constructed for exhibitions.

## Station Hub



### Coach Station

A new dedicated Coach Station is created that is separated from the Bus Station by a screen of glazing. This is a stand-alone facility with new WCs that is able to operate independently from the main station.



### Central spine

Original white tiling will be maintained at the lower levels and complemented with new, more brightly coloured tiling highlighting connections between the station's two sides. The upper surfaces will be restored, revealing the warmth of the original timber.



### WCs

The WCs will be thoroughly refurbished to provide bright, clean and safe facilities. The material palette from the waiting areas continues here to create a highly contemporary design.