

Pendle NI-153 FACTSHEET

NI-153, Working-age people claiming out of work benefits in the worst performing neighbourhoods

NI-153 is the chosen Employability / Worklessness indicator in the Lancashire LAA, supported by a local indicator (NI-152) concentrating on working-age people claiming out of work benefits across the county.

The calculations and formulas for NI-153 are taken from guidance issued by DCLG.

Worst performing neighbourhoods are defined as lowest-super output areas (LSOAs) where the average % of people claiming an out-of work benefit for the four quarters May 2006, August 2006, November 2006 and February 2007 as against the working-age population for those areas exceeded 25%. Using this calculation there are 83 LSOAs in Lancashire, with at least two LSOAs in all districts with the exceptions of Fylde and Ribble Valley.

An *out-of-work benefit* is defined as unemployed people claiming Job Seekers Allowance, Lone Parents on income support, Incapacity Benefits, and others on income-related benefits).

The baseline data for the LAA recognised the four-quarter average of out-of-work benefit claimants for the four quarters August 2006, November 2006, February 2007 and May 2007.

Recently data for August and November 2007 and February 2008 has been released and this is included in the data for each district in this paper.

The target in the LAA is calculated as follows:

| <u>Working-Age population</u> | <u>Claimants in LSOAs</u> | <u>% (LAA baseline)</u> |
|-------------------------------|---------------------------|-------------------------|
| 74,925 | 22,550 | 30.1 |

Most recent data is for February 2008 is:

| <u>Working-Age population</u> | <u>Claimants in LSOAs</u> | <u>% (if only used Feb.'08)</u> |
|-------------------------------|---------------------------|---------------------------------|
| 74,925 | 21,495 | 28.7 (-1.4%) |

Pendle NI-153 FACTSHEET

Pendle (NI153)

NI153 pre-fix indicates the data is for districts made up from the 83 SOAs. Otherwise data is for the entire district.

- NI153: Young population – 47.4% aged under 30 years compared to 36.6% Lancashire wide.
- NI153: Strong BME community presence – almost 30% of the population; 26.7% accounted for by the Pakistani community.
- NI153: High levels of income deprivation with 90% of SOAs in the bottom 10% nationally.
- NI153: 67.4% of the population categorised as “Ties of Community” by MOSAIC data – live in old houses, which they own, drive their own cars and hold down jobs.
- NI153: High levels of income inequality with 26.3% of SOAs in the Pendle district in the most income deprived 10% and 1.8% in the least deprived 10%.
- NI153: High employment deprivation - all ten SOAs are in the bottom 20% nationally.
- NI153: Nearly half of the working age population do not hold any qualifications (48.2%). For Lancashire the proportion is 30%.
- NI153: High education, skills and training deprivation - nine out of ten SOAs are in the bottom 10% nationally.
- Low levels of educational attainment - less than half of pupils in 2005/06 left school with 5+ A*-C GCSEs.
- The proportion of pupils leaving without any passes was 4.2% compared to 3.5% nationally.
- Poor nutrition - only 21.9% of the population of Pendle eat the recommended 5 portions of fruit and vegetables a day.
- High obesity levels – more than a quarter of Pendle’s over 16 population are obese.

Pendle NI-153 FACTSHEET

- NI153: Hospital episodes for reasons of mental health are ranked as above average or high in 93.3% of the area according to MOSAIC data (33.1% Lancashire wide).
- Fear of crime is high with 16% of respondents in the Police “Opinion” survey answering they felt less safe than a year previously.
- NI153: Poor living environment – 8 out of 10 SOAs ranked in the bottom 10% nationally for living environment deprivation.
- NI153: Low levels of access to green space – less than 0.1 thousand m² per 1,000 population compared to 2.3 thousand m² nationally (10.6 thousand m² Lancashire wide).
- NI153: Poor air quality – combined air quality score of 1.2 compared to 1.01 average for Lancashire.

Pendle NI-153 FACTSHEET

Targets

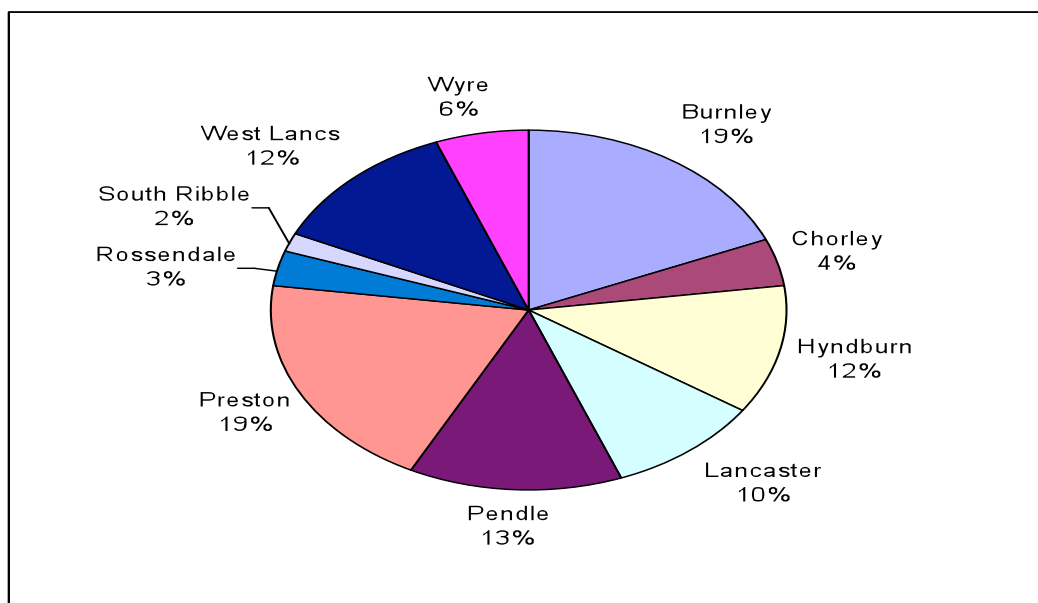
Partners through the LAA have agreed:

- 2% reduction in all areas;
- 2.5% reduction in areas with Working Neighbourhoods Fund (WNF)

| <u>LAA baseline</u> | <u>Target (2011)</u> | <u>Less claimants *</u> |
|---------------------|----------------------|-------------------------|
| 30.1% | 28.1% | 1499 |

| <u>District</u> | <u>LAA baseline (%)</u> | <u>% reduction</u> | <u>Target</u> | <u>Less claimants *</u> |
|-----------------|-------------------------|--------------------|---------------|-------------------------|
| Burnley | 31.8 | 2.5 | 29.3 | 322 |
| Chorley | 25.7 | 2 | 23.7 | 69 |
| Hyndburn | 29.9 | 2.5 | 27.4 | 203 |
| Lancaster | 30.0 | 2 | 28.0 | 165 |
| Pendle | 28.4 | 2.5 | 25.9 | 229 |
| Preston | 31.4 | 2.5 | 28.9 | 340 |
| Rossendale | 27.4 | 2 | 25.4 | 50 |
| South Ribble | 28.0 | 2 | 26.0 | 28 |
| West Lancs. | 30.3 | 2 | 28.3 | 211 |
| Wyre | 30.2 | 2 | 28.3 | 101 |
| | | | | 1718 |

* - this is an equivalent to figure for the number of people who would have to stop claiming benefits with no other people registering for claiming a benefit and a static working-age population.



Pendle NI-153 FACTSHEET

Lancashire Local Area Agreement (LAA)
NI-153 core data, August 2008

Pendle

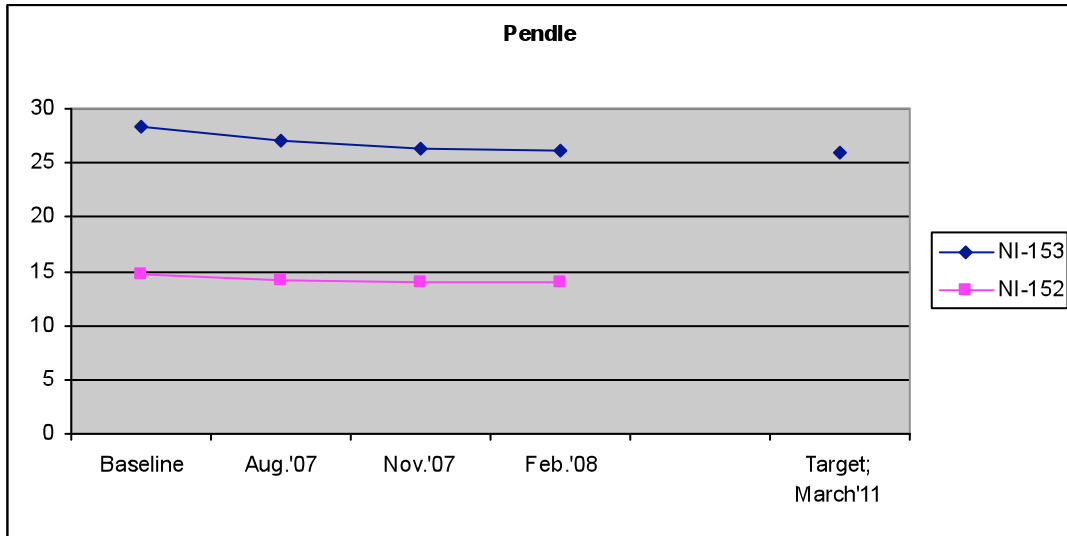
| LSOA Code | LSOA Name | Working Age pop. | Aug '06 | Nov '06 | Feb '07 | May '07 | 4 Quarter Ave | NI153 | Aug.'07 | Nov.'07 | Feb.'08 | |
|-----------|---------------------------|------------------|---------|---------|---------|---------|---------------|-------------|--------------|--------------|--------------|-----|
| E01025218 | Pendle 010E Southfield | 608 | 215 | 230 | 220 | 220 | 885 | 221 | 36.4 | 225 | 210 | 225 |
| E01025227 | Pendle 007B Waterside | 1,230 | 400 | 380 | 380 | 385 | 1545 | 386 | 31.4 | 380 | 365 | 355 |
| E01025182 | Pendle 009B Bradley | 947 | 275 | 275 | 270 | 265 | 1085 | 271 | 28.6 | 250 | 260 | 255 |
| E01025219 | Pendle 010F Southfield | 812 | 235 | 235 | 220 | 210 | 900 | 225 | 27.7 | 210 | 210 | 215 |
| E01025220 | Pendle 005A Vivary Bridge | 876 | 245 | 235 | 240 | 220 | 940 | 235 | 26.8 | 225 | 210 | 215 |
| E01025184 | Pendle 009D Bradley | 1,109 | 310 | 300 | 310 | 285 | 1205 | 301 | 27.2 | 265 | 265 | 250 |
| E01025226 | Pendle 007A Waterside | 973 | 270 | 265 | 275 | 280 | 1090 | 273 | 28.0 | 260 | 260 | 260 |
| E01025230 | Pendle 011D Whitefield | 907 | 240 | 245 | 245 | 240 | 970 | 243 | 26.7 | 235 | 230 | 225 |
| E01025181 | Pendle 009A Bradley | 839 | 215 | 215 | 225 | 220 | 875 | 219 | 26.1 | 215 | 200 | 205 |
| E01025217 | Pendle 010D Southfield | 846 | 230 | 225 | 230 | 205 | 890 | 223 | 26.3 | 205 | 205 | 195 |
| | | 9,147 | | | | | 2,596 | 28.4 | 2,470 | 2,415 | 2,400 | |
| | | | | | | | | | 27.0 | 26.4 | 26.2 | |

Pendle NI-153 FACTSHEET

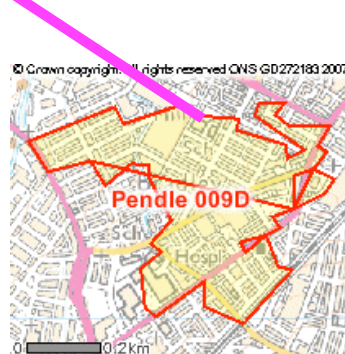
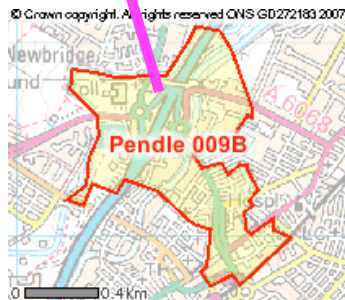
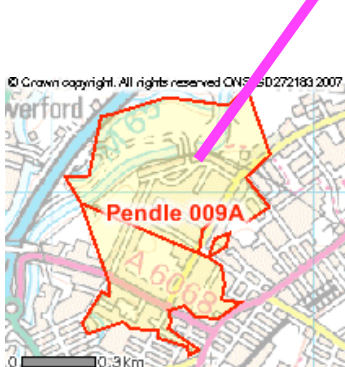
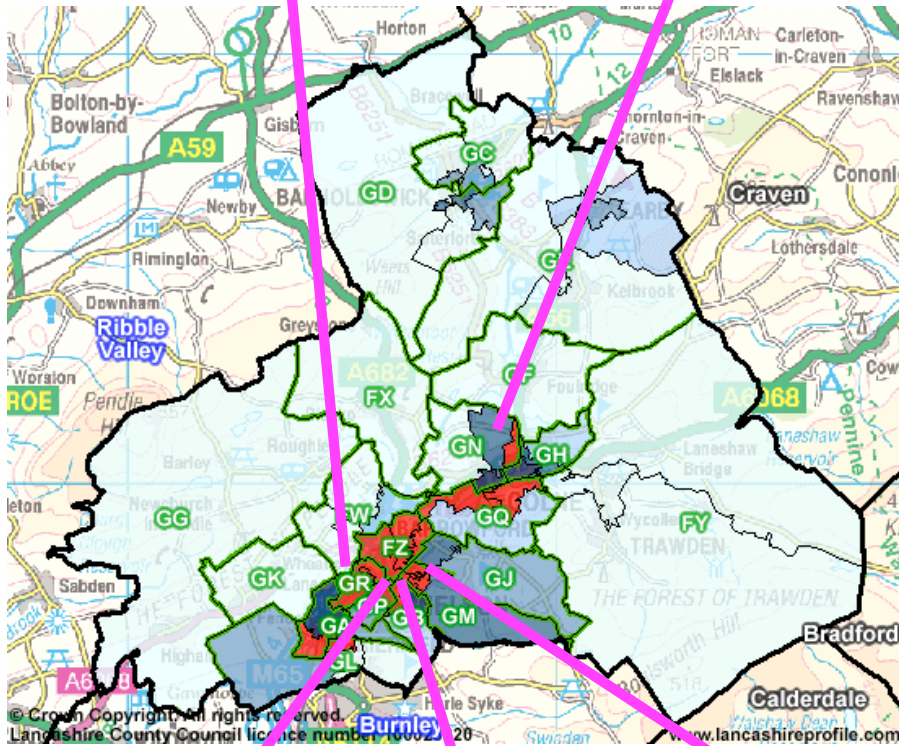
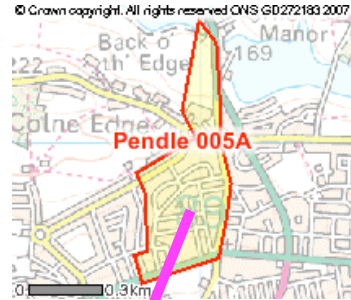
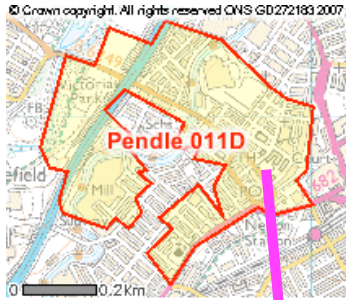
Pendle NI-152 information

| Place | Working Age pop.* | Aug '06 | Nov '06 | Feb '07 | May '07 | 4 Quarter Ave | NI152 (%) | Aug.'07 | Nov.'07 | Feb.'08 |
|-------------------|-------------------|---------|---------|---------|---------|---------------|-----------|-----------------|-----------------|-----------------|
| Pendle | 54,923 | 8,200 | 8,085 | 8,150 | 7,885 | 8,080 | 14.7% | 7,825 14.2% | 7,660 13.9% | 7,655 13.9% |
| Lancashire County | 713,103 | 88,735 | 87,215 | 88,210 | 85,625 | 87,446 | 12.3 | 86,090 12.1% | 84,515 11.9% | 85,095 11.9% |

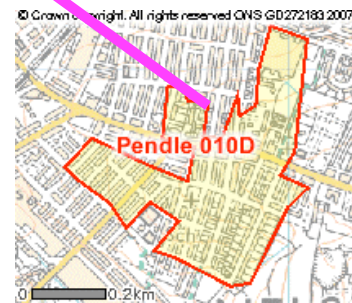
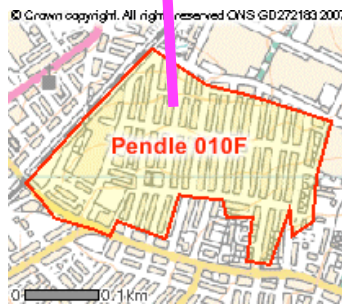
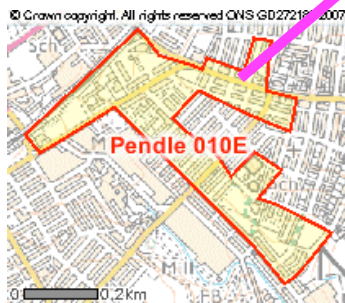
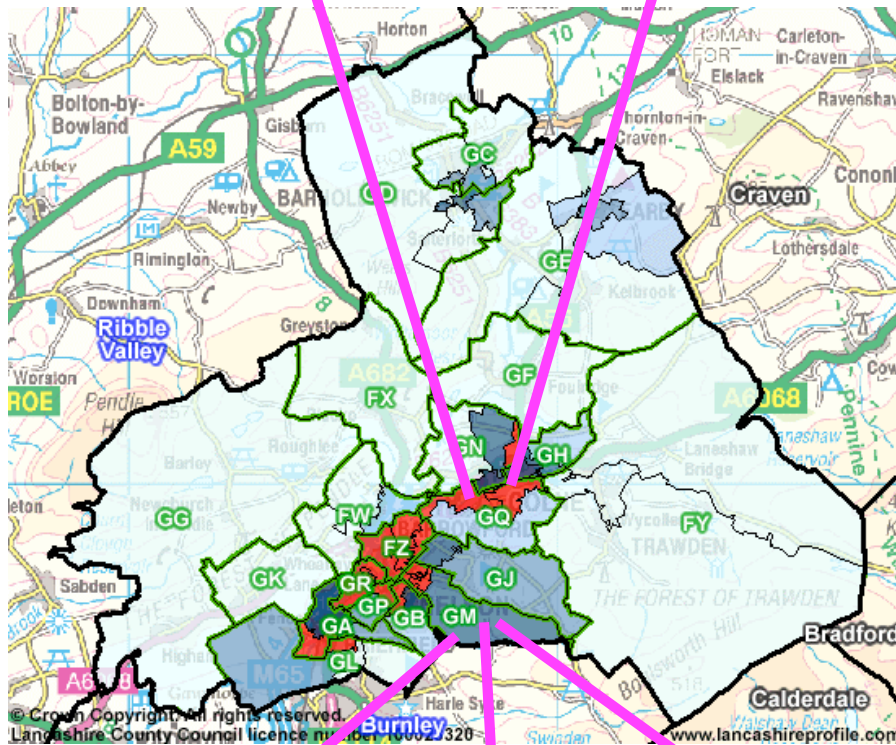
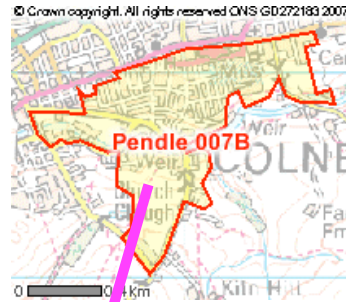
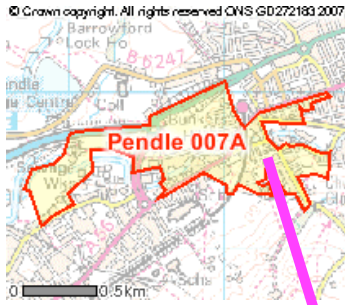
* - 2006 mid-year estimates



Pendle NI-153 FACTSHEET



Pendle NI-153 FACTSHEET



Pendle NI-153 FACTSHEET

POPULATION

| Area | Pop | Female | | Male | |
|---------------|---------------|--------------|-------------|--------------|-------------|
| | No | No | % | No | % |
| NI153 SOAs | 125,812 | 64,254 | 51.1 | 61,558 | 48.9 |
| Pendle | 15,584 | 7,988 | 51.3 | 7,596 | 48.7 |
| Lancashire | 1,165,720 | 595,027 | 51.0 | 570,693 | 49.0 |
| North West | 6,853,200 | 3,498,700 | 51.1 | 3,354,500 | 48.9 |
| England | 50,762,900 | 25,836,600 | 50.9 | 24,926,400 | 49.1 |

Source: Mid-2006 Population Estimates, ONS

AGE

| Area | Pop | 0-15 | Working age: 16-59 |
|---------------|---------------|-------------|-------------------------|
| | No | % | females, 16-64 males |
| NI153 SOAs | 125,812 | 24.4 | 60.0 |
| Pendle | 15,584 | 26.3 | 59.6 |
| Lancashire | 1,165,720 | 19.0 | 61.2 |

Source: Mid-2006 Population Estimates, ONS

ETHNICITY

| Area | White | Mixed | Indian | Pakistani | Bangla-deshi | Other Asian | Black | Other |
|---------------|-------------|------------|------------|-------------|--------------|-------------|------------|------------|
| | % | % | % | % | % | % | % | % |
| NI153 SOAs | 86.0 | 1.1 | 2.1 | 8.5 | 1.2 | 0.4 | 0.4 | 0.3 |
| Pendle | 70.4 | 1.2 | 0.4 | 26.7 | 0.2 | 0.8 | 0.1 | 0.3 |
| Lancashire | 94.7 | 0.7 | 1.3 | 2.3 | 0.3 | 0.2 | 0.2 | 0.4 |
| North West | 94.4 | 0.9 | 1.1 | 1.7 | 0.4 | 0.2 | 0.6 | 0.6 |
| England | 90.9 | 1.3 | 2.1 | 1.4 | 0.6 | 0.5 | 2.3 | 0.9 |

Source: Census 2001, ONS

INCOME

| Area | Low | Below average | Low or below average | Average | Above average | High |
|---------------|-------------|---------------|----------------------|------------|---------------|------------|
| | % | % | % | % | % | % |
| NI153 SOAs | 60.8 | 33.8 | 94.6 | 3.1 | 1.7 | 0.6 |
| Pendle | 29.9 | 66.9 | 96.7 | 3.2 | 0.0 | 0.1 |
| Lancashire | 19.9 | 22.0 | 41.8 | 14.8 | 22.0 | 21.3 |

Source: MOSAIC Data 2008; Experian

Pendle NI-153 FACTSHEET

INCAPACITY BENEFIT POPULATION (average March '07 – February '08)

| Area | All IB/SDA | IB Claim. | 16-24 | 25-49 | 50-59 | 60+ | Female | Male | Mental Health |
|---------------|--------------|-------------|------------|-------------|-------------|------------|-------------|-------------|---------------|
| | No | % | % | % | % | % | % | % | % |
| NI153 SOAs | 13629 | 92.5 | 7.1 | 52.5 | 30.7 | 9.7 | 40.3 | 59.7 | 47.7 |
| Pendle | 1,668 | 94.7 | 7.3 | 53.1 | 31.1 | 8.5 | 40.6 | 59.4 | 49.9 |
| Lancashire | 59,938 | 90.4 | 5.9 | 45.2 | 34.3 | 14.6 | 42.6 | 57.4 | 40.5 |

Source: Benefits payments, DWP; ONS

JSA CLAIMANTS AGAINST WORKING-AGE POPULATION

| Area | Aug-07 | Sep-07 | Oct-07 | Nov-07 | Dec-07 | Jan-08 | Feb-08 | Mar-08 | Apr-08 | May-08 | Jun-08 | Jul-08 |
|---------------|------------|------------|------------|------------|------------|------------|------------|------------|------------|------------|------------|------------|
| | % | % | % | % | % | % | % | % | % | % | % | % |
| NI153 SOAs | 5.0 | 4.8 | 4.6 | 4.6 | 4.7 | 5.0 | 5.1 | 5.1 | 5.2 | 5.1 | 5.0 | 5.1 |
| Pendle | 3.8 | 3.4 | 3.3 | 3.2 | 3.2 | 3.5 | 3.7 | 3.8 | 4.0 | 4.1 | 4.1 | 4.5 |
| Lancashire | 1.8 | 1.7 | 1.6 | 1.6 | 1.7 | 1.8 | 1.9 | 1.8 | 1.8 | 1.8 | 1.8 | 1.9 |
| North West | 2.6 | 2.5 | 2.4 | 2.4 | 2.4 | 2.6 | 2.6 | 2.6 | 2.6 | 2.6 | 2.6 | 2.7 |
| England | 2.3 | 2.2 | 2.1 | 2.1 | 2.1 | 2.2 | 2.2 | 2.2 | 2.2 | 2.2 | 2.2 | 2.3 |

Source: Claimant Count, Nomis; Census 2001, ONS

INDUSTRY JOBS AS PROPORTION OF ALL JOBS

| Area | W.sale and retail trade | Manu-facturing | Public admin and defence | Real estate, renting and bus. activities | Hotels and restaurants | Health and social work | Edu-cation | Other services | Financial inter-mediation |
|---------------|-------------------------|----------------|--------------------------|--|------------------------|------------------------|-------------|----------------|---------------------------|
| NI153 SOAs | 24.5 | 15.7 | 12.7 | 10.4 | 7.5 | 6.9 | 6.2 | 5.5 | 3.8 |
| Pendle | 22.3 | 19.5 | 6.5 | 12.8 | 3.9 | 7.0 | 11.6 | 6.1 | 3.3 |
| Lancashire | 17.0 | 16.8 | 6.2 | 12.8 | 7.1 | 12.9 | 10.4 | 4.2 | 2.1 |
| North West | 17.0 | 12.5 | 5.6 | 15.8 | 7.0 | 12.7 | 9.4 | 4.7 | 3.4 |
| England | 16.9 | 10.9 | 5.3 | 17.9 | 6.7 | 11.8 | 9.2 | 5.3 | 4.0 |

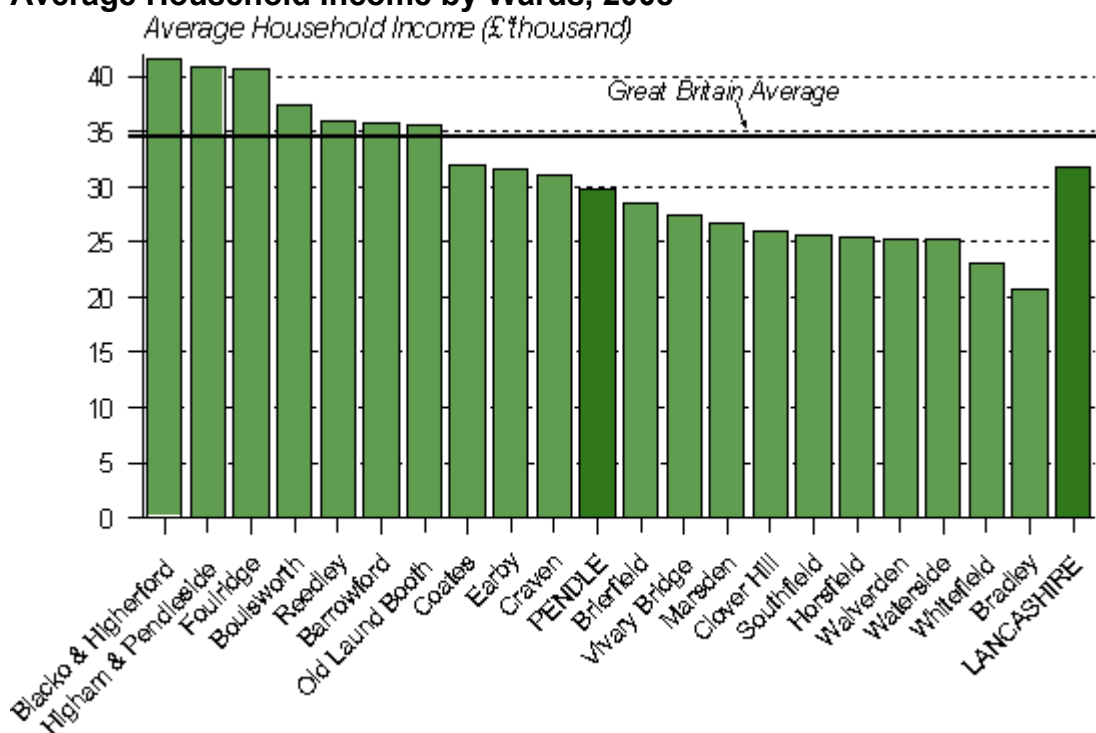
Source: Annual Business Enquiry, 2006; Nomis

Key employers & employment sites

http://www.lancashire.gov.uk/office_of_the_chief_executive/lancashireprofile/areas/peconc.asp

Pendle NI-153 FACTSHEET

Average Household Income by Wards, 2008



www.lancashireprofile.com

Source CACI Ltd - PayCheck Data 2008

SKILLS

| Area | None | Level 1 | Level 2 | Level 3 | Level 4/5 | Other |
|---------------|-------------|-------------|-------------|------------|------------|------------|
| | % | % | % | % | % | % |
| NI153 SOAs | 45.8 | 17.3 | 16.3 | 5.6 | 8.3 | 6.7 |
| Pendle | 48.2 | 16.0 | 15.0 | 5.8 | 8.5 | 6.4 |
| Lancashire | 30.1 | 17.0 | 19.7 | 8.4 | 17.3 | 7.5 |

Source: Census 2001, ONS

LIMITING LIFE-LONG ILLNESS

| Area | All People | With Limiting Long Term Illness % | Without Limiting Long Term Illness % |
|---------------|---------------|-----------------------------------|--------------------------------------|
| NI153 SOAs | 123,492 | 24.8 | 75.2 |
| Pendle | 15,635 | 24.4 | 75.6 |
| Lancashire | 1,134,974 | 20.2 | 79.8 |
| North West | 6,729,764 | 20.7 | 79.3 |
| England | 49,138,831 | 17.9 | 82.1 |

Source: Census 2001, ONS

Pendle NI-153 FACTSHEET

HOSPITAL EPISODES FOR ALCOHOL & DRUGS

| Area | Low | Below average | Average | Above average | High | Above Average or high |
|---------------|------------|---------------|------------|---------------|-------------|-----------------------|
| | % | % | % | % | % | % |
| NI153 SOAs | 2.5 | 10.4 | 4.8 | 10.2 | 72.2 | 82.3 |
| Pendle | 0.1 | 26.1 | 6.0 | 4.0 | 63.9 | 67.9 |
| Lancashire | 48.0 | 10.5 | 11.9 | 6.5 | 23.1 | 29.6 |

Source: MOSAIC Data 2008; Experian

HOSPITAL EPISODES FOR MENTAL HEALTH ISSUES

| Area | Low | Below average | Average | Above average | High | Above Average or high |
|---------------|------------|---------------|------------|---------------|-------------|-----------------------|
| | % | % | % | % | % | % |
| NI153 SOAs | 2.0 | 0.9 | 5.3 | 17.6 | 74.1 | 91.7 |
| Pendle | 0.1 | 0.0 | 6.6 | 29.4 | 63.9 | 93.3 |
| Lancashire | 43.3 | 6.2 | 17.4 | 8.8 | 24.3 | 33.1 |

Source: MOSAIC Data 2008; Experian

VIOLENCE, DRUGS & ALOCOHOL INCIDENTS /1000 of POPULATION

| Area | Domestic Violence | Common Assault | Violent Crime | Assault, rape, stabbing or gun wounds (ambulance figures) | Drugs offences |
|---------------|-------------------|----------------|---------------|---|----------------|
| NI153 SOAs | 23.1 | 9.0 | 35.3 | 10.7 | 6.1 |
| Pendle | 18.7 | 5.6 | 24.1 | 8.6 | 3.9 |
| Lancashire | 8.7 | 3.2 | 11.9 | 3.3 | 1.9 |

Source: Lancashire MADE Public

ANTI-SOCIAL BEHAVIOUR & CRIMINAL DAMAGE /1000 of POPULATION

| Area | ASB (Police Incidents) | Criminal Damage |
|---------------|------------------------|-----------------|
| NI153 SOAs | 230.7 | 42.8 |
| Pendle | 173.0 | 28.0 |
| Lancashire | 99.6 | 18.1 |

Source: Lancashire MADE Public

Pendle NI-153 FACTSHEET

MOASIC HOUSEHOLD DATA

| Area | A | B | C | D | E | F | G | H | I | J | K |
|---------------|------------|------------|------------|-------------|------------|------------|-------------|------------|------------|------------|------------|
| | % | % | % | % | % | % | % | % | % | % | % |
| NI153 SOAs | 0.0 | 1.3 | 1.0 | 37.3 | 0.0 | 12.6 | 29.1 | 10.3 | 7.5 | 0.8 | 0.0 |
| Pendle | 0.1 | 0.0 | 0.0 | 67.4 | 0.0 | 6.4 | 14.2 | 6.7 | 4.6 | 0.6 | 0.0 |
| Lancashire | 6.6 | 9.8 | 19.1 | 27.7 | 2.4 | 2.7 | 6.4 | 7.1 | 3.8 | 10.1 | 4.5 |

Source: MOSAIC Data 2008; Experian

Group A: Symbols of Success

People whose lives are 'successful' by whatever yardsticks society commonly uses to measure success. These are people who have rewarding careers rather than jobs, who live in sought after locations, who drive the more modern and expensive cars and who indulge in the most exotic leisure pursuits. Most, though not all, appear to enjoy stable household arrangements.

Group B: Happy Families

Happy Families contains people whose focus is on career, home and family. These are mostly younger age groups who are married, or at least in a permanent relationship, and are now raising children in post war family houses, often in areas of the country with rapidly growing populations. The focus of expenditure is on equipment for the home and garden, and the immediate family unit is the principal focus of leisure activities.

Group C: Suburban Comfort

Suburban Comfort comprises people who have successfully established themselves and their families in comfortable homes in mature suburbs. Children are becoming more independent, work is becoming less of a challenge and interest payments on homes and other loans are becoming less burdensome. With more time and money on their hands, people can relax and focus on activities that they find intrinsically rewarding.

Group D: Ties of Community

Ties of Community is comprised of people whose lives are mostly played out within the confines of close knit communities. Living mostly in older houses in inner city neighbourhoods or in small industrial towns, most of these people own their homes, drive their own cars and hold down responsible jobs. Community norms rather than individual material ambitions shape the pattern of most residents' consumption.

Group E: Urban Intelligence

Urban Intelligence mostly contains young and well educated people who are open to new ideas and influences. Young and single, and few encumbered with children, these people tend to be avid explorers of new ideas and fashions, cosmopolitan in their tastes and liberal in their social attitudes. Whilst eager consumers of the media and with a sophisticated understanding of brand values, they like to be treated as individuals, and value authenticity over veneer.

Group F: Welfare Borderline

Welfare Borderline is comprised of many people who are struggling to achieve the material and personal rewards that are assumed to be open to all in an affluent society. Few hold down rewarding or well paying jobs and, as a result, most rely on the council for their accommodation, on public transport to get around and on state benefits to fund even the bare

Pendle NI-153 FACTSHEET

essentials. The lack of stability in many family formations undermines social networks and leads to high levels of anti social behaviour among local children.

Group G: Municipal Dependency

Municipal Dependency mostly contains families on lower incomes who live on large municipal council estates where few of the tenants have exercised their right to buy. Often isolated in the outer suburbs of large provincial cities, Municipal Dependency is characterised as much by low aspirations as by low incomes. Here people watch a lot of television and buy trusted mainstream brands from shops that focus on price rather than range or service.

Group H: Blue Collar Enterprise

Blue Collar Enterprise comprises people who, though not necessarily very well educated, are practical and enterprising in their orientation. Many of these people live in what were once council estates but where tenants have exercised their right to buy. They own their cars, provide a reliable source of labour to local employers and are streetwise consumers. Tastes are mass market rather than individualistic and focus on providing comfort and value to family members.

Group I: Twilight Subsistence

Twilight Subsistence consists of elderly people who are mostly reliant on state benefits, and live in housing designed by local authorities and housing associations. Some live in old people's homes or sheltered accommodation, while others live in small bungalows, set in small enclaves within larger council estates. Most of these people spend money only on the basic necessities of life.

Group J: Grey Perspectives

Grey Perspectives consists mostly of pensioners who own their homes and who have some source of income beyond the basic state pension. Many of these people have, on retirement, moved to the seaside or the countryside to live among people similar to themselves. Today many of these people have quite active lifestyles and are considered in their purchasing decisions.

Group K: Rural Isolation

Rural Isolation contains people whose pattern of living is distinctively rural. They live not just outside major population centres but also deep in the countryside, in small communities which have been little influenced by the influx of urban commuters. These are places where people with different levels of income share attachments to local communities, and where engagement with the community and with the natural environment are more important to most residents than material consumption.

Pendle NI-153 FACTSHEET

INDICES OF MULTIPLE DEPRIVATION

| Area | Total number of SOAs | SOAs ranked in bottom 10% nationally | | SOAs ranked in bottom 20% nationally | |
|---------------|----------------------|--------------------------------------|---------------|--------------------------------------|---------------|
| | | No | % of all SOAs | No | % of all SOAs |
| NI153 SOAs | 83 | 58 | 69.9 | 82 | 98.8 |
| Pendle | 10 | 9 | 90.0 | 10 | 100.0 |

Source: Indices of Multiple Deprivation 2007

IMD - EMPLOYMENT

| Area | Total number of SOAs | SOAs ranked in bottom 10% nationally | | SOAs ranked in bottom 20% nationally | |
|---------------|----------------------|--------------------------------------|---------------|--------------------------------------|---------------|
| | | No | % of all SOAs | No | % of all SOAs |
| NI153 SOAs | 83 | 48 | 57.8 | 79 | 95.2 |
| Pendle | 10 | 6 | 60.0 | 10 | 100.0 |

Source: Indices of Multiple Deprivation 2007

IMD - SKILLS

| Area | Total number of SOAs | SOAs ranked in bottom 10% nationally | | SOAs ranked in bottom 20% nationally | |
|---------------|----------------------|--------------------------------------|---------------|--------------------------------------|---------------|
| | | No | % of all SOAs | No | % of all SOAs |
| NI153 SOAs | 83 | 58 | 69.9 | 82 | 98.8 |
| Pendle | 10 | 9 | 90.0 | 10 | 100.0 |

Source: Indices of Multiple Deprivation 2007

IMD - HEALTH

| Area | Total number of SOAs | SOAs ranked in bottom 10% nationally | | SOAs ranked in bottom 20% nationally | |
|---------------|----------------------|--------------------------------------|---------------|--------------------------------------|---------------|
| | | No | % of all SOAs | No | % of all SOAs |
| NI153 SOAs | 83 | 80 | 96.4 | 83 | 100.0 |
| Pendle | 10 | 10 | 100.0 | 10 | 100.0 |

Source: Indices of Multiple Deprivation 2007

IMD - CRIME

| Area | Total number of SOAs | SOAs ranked in bottom 10% nationally | | SOAs ranked in bottom 20% nationally | |
|---------------|----------------------|--------------------------------------|---------------|--------------------------------------|---------------|
| | | No | % of all SOAs | No | % of all SOAs |
| NI153 SOAs | 83 | 32 | 38.6 | 52 | 62.7 |
| Pendle | 10 | 2 | 20.0 | 6 | 60.0 |

Source: Indices of Multiple Deprivation 200

Pendle NI-153 FACTSHEET

Further information available through Lancashire Profile website:

http://www.lancashire.gov.uk/office_of_the_chief_executive/lancashireprofile/areas/pe.asp

or

Heather Catt, 01772 536809, heather.catt@lancashire.gov.uk

Part of the Joint Strategic Needs Assessment Corporate Research and Intelligence Team
Policy Unit, Office of the Chief Executive